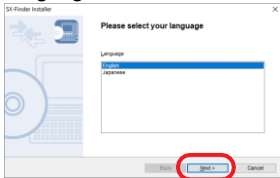


Thank you for downloading SX-Finder. This installation Guide provides an installation process of SX-Finder.

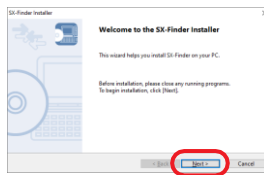
1. Installation

1 Unzip sx-finder-1-0.zip and click **Setup** in the folder, select the language and click **Next**.

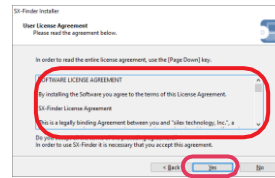


* If the User Account Control screen is displayed, click **Yes** and **Continue**.

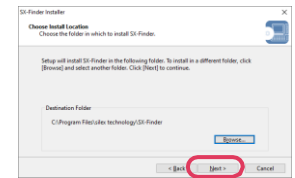
2 Click **Next**.



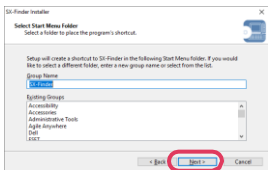
3 Read the SOFTWARE LICENSE AGREEMENT and click **Yes**.



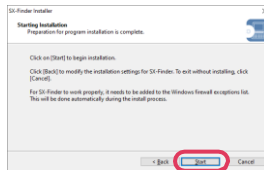
4 Choose install location and click **Next**.



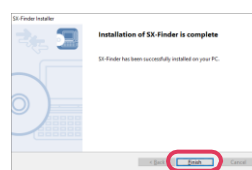
5 Select start menu folder and click **Next**.



6 Click **Start**.

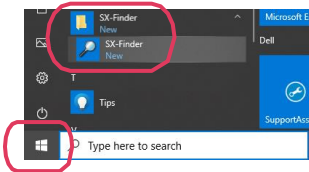


7 Installation completes. Click **Finish**.

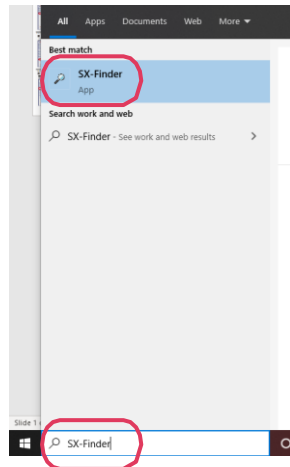


2. Launch SX-Finder

1 Look for SX-Finder from "Start" or search SX-Finder, then launch SX-Finder



* Installation folder depends on the location selected in step 4.



2 SX-Finder supported silex products in same network are found by the application.

Product	IP Address	MAC Address
DS-520AN	192.168.0.163	84:25:3F:01:1D:15
DS-600	192.168.0.180	84:25:3F:1A:25:E3
Silex SD-320AN	192.168.0.39	84:25:3F:2B:8C:4C
SX-AP-4800AN2	192.168.0.210	84:25:3F:42:69:B1
SX-ND-4350WAN+	192.168.0.10	84:25:3F:3F:67:08

* When multiple products with same product name are found by SX-Finder, please check a MAC address labeled on the bottom of the product in interest to locate proper IP address.

If no device is found, click "Properties...", and set a broadcast address to look for the product and search again.

