

# Low Power Enterprise Grade Wi-Fi Bridge BR-330AC-LP

Converge Legacy Ethernet OT Devices into Enterprise IT Wirelessly

Low Power  
Consumption



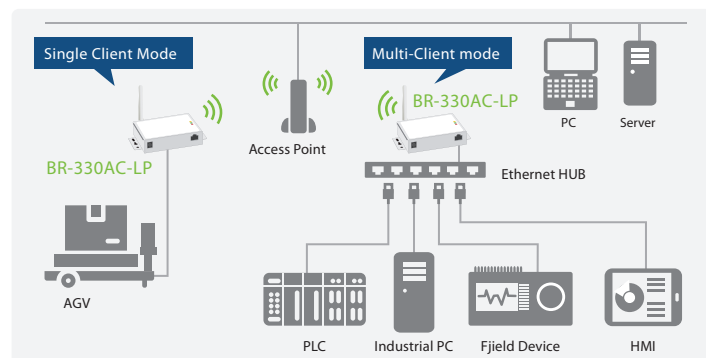
## Overview

The BR-330AC-LP is the enterprise Wi-Fi 5 Ethernet to Wi-Fi bridge with the lowest power consumption in the market. It supports WPA enterprise security and TLS 1.2. The BR-330AC-LP is enabled by silex's SX-590 module which has enabled a number of medical devices with the secure and reliable wireless connectivity. Its low power operation provides users with more flexibility in its installation as the users have more options for the power supply source.

## Features

### 1 Single/Multi-Client Bridging

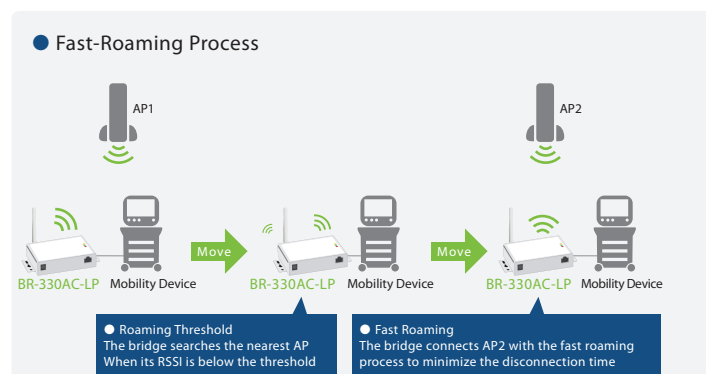
The BR-330AC-LP seamlessly bridges an Ethernet device to 802.11ac wireless network in the single client mode. It can also bridge up to 16 Ethernet devices connected through a network hub to the wireless network.



### 2 Fast Roaming to support Mobility

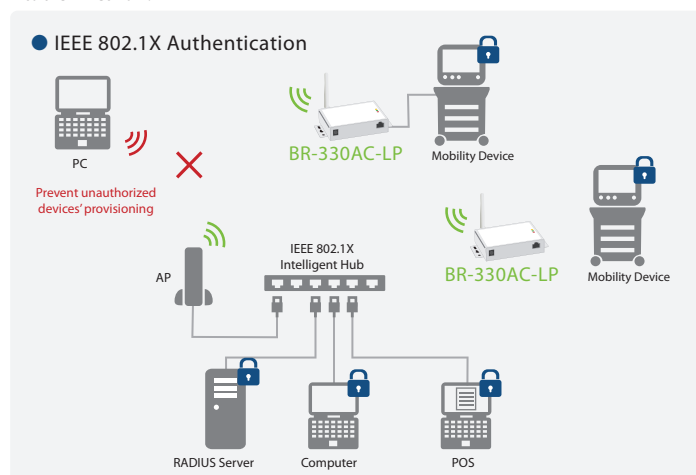
The BR-330AC-LP supports fast-roaming to add not only wireless connectivity but also mobility to an Ethernet device. The BR-330AC-LP is the perfect solution to add mobility to the Ethernet devices while maintaining the Wi-Fi connectivity and consuming less power from the battery on equipment.

\*1: The BR-330AC-LP supports IEEE 802.11r roaming. Access points need to support IEEE 802.11r to use the BR-330AC-LP's 802.11r feature. The roaming performance depends on the interoperability with the APs in the infrastructure.



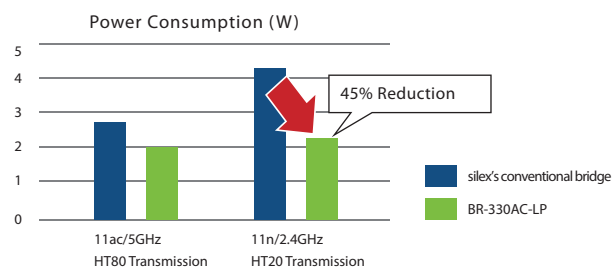
### 3 Enterprise Security

The BR-330AC-LP is the ideal solution for successful IT/OT convergence with traditional non-802.1X capable Ethernet devices. Combining with 802.1X authentication over the Wi-Fi and its MAC address filtering function, only authorized Ethernet devices in OT domain can converge into the IT network.



### 4 Low Power Consumption

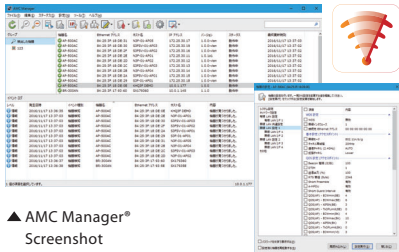
The BR-330AC-LP consumes less than 2.5W (RMS) during typical use cases. The low power operation will allow longer operation with a power bank/battery.



\* Example of measurement in silex's lab.  
(The power consumption varies according to use cases)

## 5 Remote Device Management

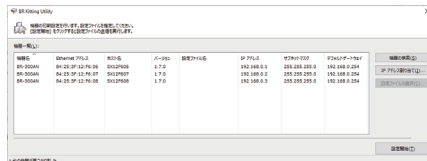
The configuration of the the BR-330AC-LP is easy and quick through its integrated configuration web page, a kitting utility tool, or AMC Manager®. Even when you need a bunch of device configurations to install a number of the BR-330AC-LPs with a particular need, Silex will work with you to satisfy your unique requirement.



▲ AMC Manager®  
Screenshot



BR Kitting Utility  
Screenshot



※ BR Kitting Utility is the plug-in software for licensed AMC Manager®.

## Specification

Product Name	BR-330AC-LP
Ethernet Interface	RJ-45x1 10BASE-T / 100BASE-TX(Auto-Negotiation)
Wireless LAN Interface	Dual-band IEEE 802.11a/b/g/n/ac, 1T1R - 2.4GHz - 5GHz
Switch	push switchx1
LED	Body: 3 LEDs RJ-45: 2 LEDs
Operating Condition	Temperature: 0 ~ +50 °C Humidity: 20 ~ 80%RH(No condensation)
Storage Condition	Temperature: -20 ~ +70 °C Humidity: 20 ~ 90%RH(No condensation)
Power Supply	AC100-240V adapter (EIAJ Class2) Optional: USB power cable to DC Jack
Power Consumption	RMS Power: 2.75W (DC5V, 0.55A) Transient Peak Power: 4.25W (DC5V 0.85A)
Dimension	126x75x24mm (the main body only)
Weight	255g (the main body only)
Included Items	BR-330AC-LP, AC Adapter, Rubber Feet, Setup guide, GPL inquiry sheet
Regulatory Compliance	VCCI Class B, FCC Class B, ICES Class B, CE Class B, RoHS
Security	Wi-Fi security - Authentication Open, WPA2-Personal, WPA/WPA2-Personal, WPA2-Enterprise, WPA/WPA2-Enterprise, IEEE 802.1X - Encryption WEP, TKIP, AES MAC Address Filter, HTTPS Web page access
Warranty	5 years

## Related Products

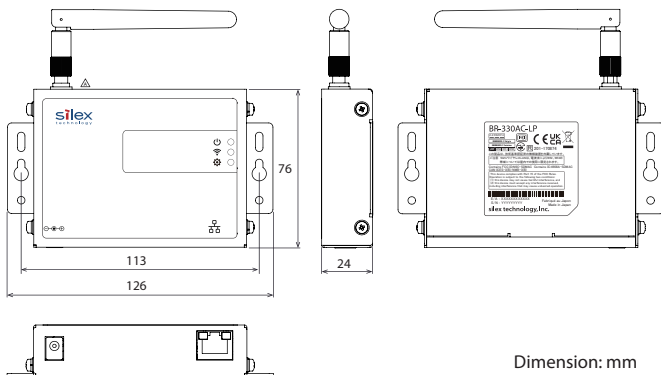
IEEE 802.11ac  
(Wave2) High-  
Performance  
Enterprise Bridge  
BR-500AC



Y-shaped USB  
power cable for  
BR-330AC-LP



## Outline of the BR-330AC-LP



Dimension: mm

BR-330AC-LP Product page:

[https://www.silextechnology.com/connectivity-solutions/ethernet-2-wifi-bridge/br-330ac\\_lp](https://www.silextechnology.com/connectivity-solutions/ethernet-2-wifi-bridge/br-330ac_lp)

Contact silex support for any questions  
and Inquiries about the product.

<https://www.silextechnology.com/support/contact-silex-support>

● Silex technology is a registered trademark of silex technology, Inc. other product or brand names may be registered trademarks or trademarks of their respective owners.  
● Technical information and specifications are subject to change without notice. © 2022 silex technology, Inc. All rights reserved.

## silex global sales & support locations



**US Office**  
silex technology america, Inc.  
US toll free 657-218-5199  
[www.silextechnology.com](http://www.silextechnology.com)  
[sales@silexamerica.com](mailto:sales@silexamerica.com)

**Europe Office**  
silex technology europe, GmbH.  
+49-2154-88967-0  
Germany toll free 0800-7453938  
[www.silextechnology.com](http://www.silextechnology.com)  
[sales@silexeurope.com](mailto:sales@silexeurope.com)

**India Office**  
silex technology india, Pvt. Ltd.  
+91-44-43033234  
[www.silex-india.com](http://www.silex-india.com)  
[support@silex-india.com](mailto:support@silex-india.com)

**Corporate Headquarter**  
silex technology, Inc.  
+81-774-98-3781  
[www.silex.jp](http://www.silex.jp)  
[support@silex.jp](mailto:support@silex.jp)