

Projection Assistant Software SX Virtual Link Display for Education User's Guide for Teachers

English

silex
technology



SX Virtual Link Display for Education is the projection assistant software program that is exclusively designed for educational sites and can be used in a class room of school with Silex Technology's Access Points. This document explains how to install it to a tablet device of teacher as well as start/finish the class.

- * In this document, touch-panel device is used as example. If you are using a mouse or touch pad, please "click" instead of "tap" to follow the instructions.
- * This document has been translated to some other languages.
- * Other language versions of this document can be found on our website. (<http://www.silexeurope.com/>)

Supported OS

Windows 7 SP1	(32bit/64bit)
Windows 8	(32bit/64bit)
Windows 8.1	(32bit/64bit)
Windows 10	(32bit/64bit)

- * Fast User Switching Function is not supported.
- * Runs as a desktop application program on Windows 8 or newer operating systems.
- * Windows RT is not supported.
- * In this document, Windows7 SP1 is used as example.

Customer Support

USA : silex technology america, Inc.
E-mail : support@silexamerica.com
URL : <http://www.silexamerica.com/>
Phone : +1-866-765-8761

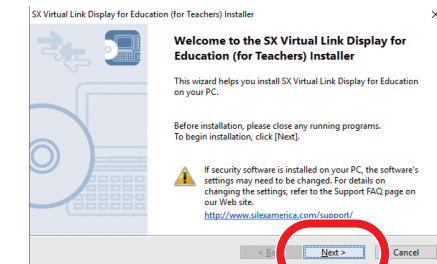
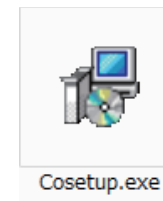
Europe : silex technology europe GmbH
E-mail : support@silexeurope.com
URL : <http://www.silexeurope.com/>
Phone : +49-(0)2151-65009-0

Installing SX Virtual Link Display for Education (for Teachers) to a tablet device of teacher

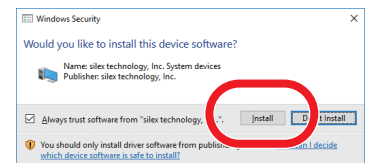
- 1 Visit Silex Technology's website and download **SX Virtual Link Display for Education (for Teachers)**.
- 2 Extract the downloaded file and execute **Cosetup.exe** in the "s-xxxxx" folder.
- 3 Installation wizard is displayed. Tap **Next** and follow the instructions on a screen.

USA : silex technology america, Inc.
URL : <http://www.silexamerica.com/>

Europe : silex technology europe GmbH
URL : <http://www.silexeurope.com/>

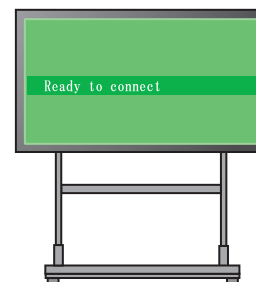


When the Windows Security dialog is displayed, tap **Install**.

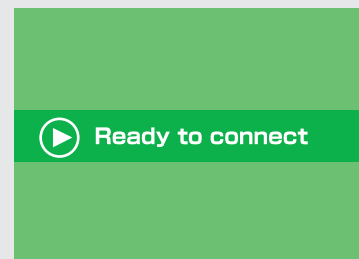


Starting a class using SX Virtual Link Display for Education (for Teachers)

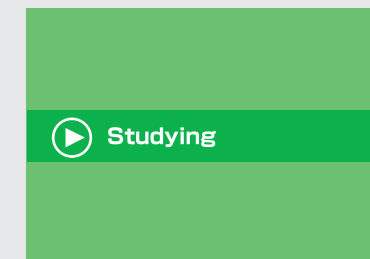
Large display
(Electronic blackboard, etc)



Check the standby screen below is displayed.



When the class is started, the standby screen below is displayed.



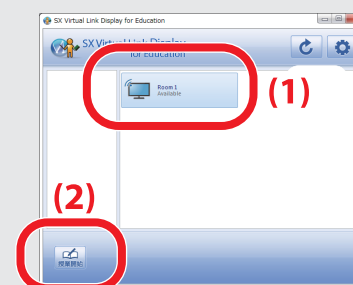
Tablet for teachers

Tap the shortcut of **SX Virtual Link Display for Education**.

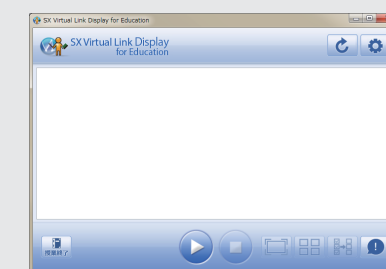


The main screen of SX Virtual Link Display for Education (for Teachers) is displayed. Select the large display to use in a class

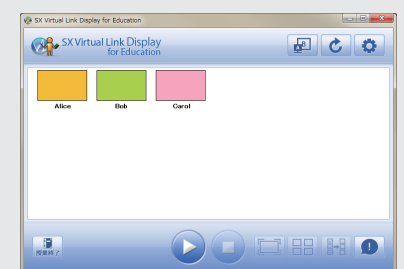
room (1) and tap (2).



The class mode screen is displayed.



The names of students who have joined the class and their thumbnail screens are displayed.

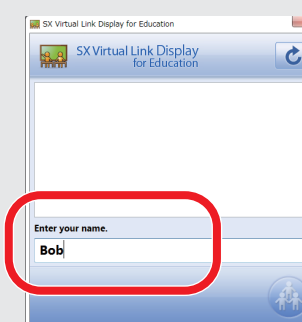


Tablet for students

Join a class using a tablet of student. In this section, Windows version is used as an example. For how to join the class on other operating systems, see **User's Guide for Students**.



The screen of SX Virtual Link Display for Education (for Students) is displayed. Tap on the name entry field and enter the name of student who joins the class.



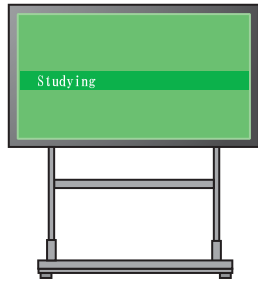
The teacher who started a class is displayed. Select a teacher of the class to join (1) and tap (2).



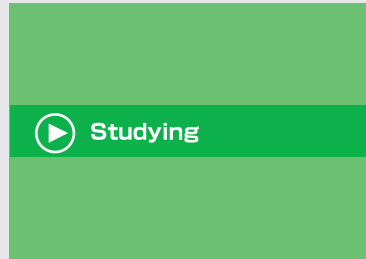
After the student has joined the class, the screen of SX Virtual Link Display for Education (for Students) is hidden until the class is finished.

Projecting a screen of teacher's tablet to large display

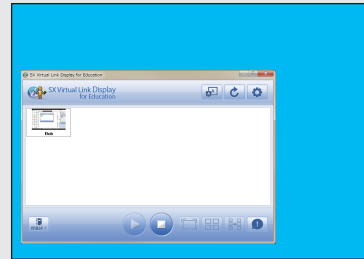
Large display
(Electronic blackboard, etc.)




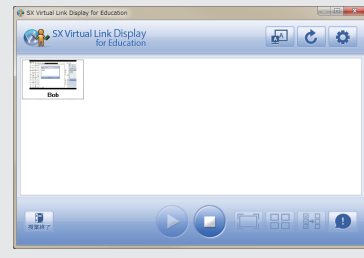
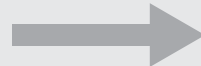
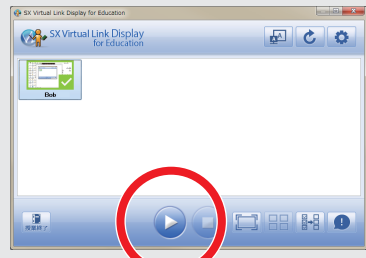
Check the standby screen below is displayed.



The screen of teacher's tablet is projected.



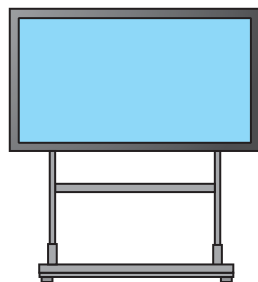
Tap  on the class mode screen.



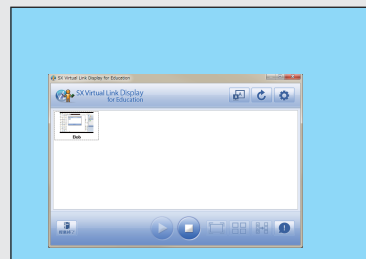
Tablet for teachers

Finishing projection on a large display

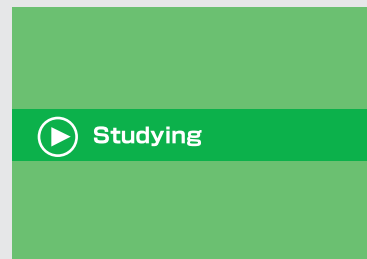
Large display
(Electronic blackboard, etc.)




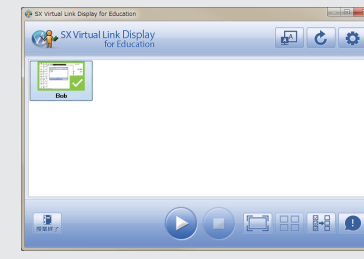
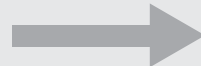
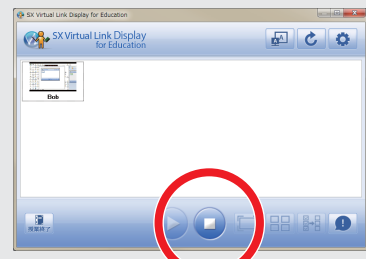
The screen of teacher's tablet is projected.



When projection is finished, the standby screen below is displayed.



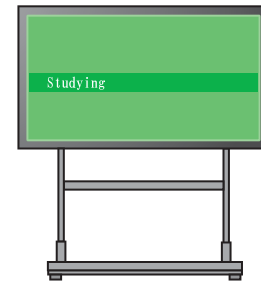
Tap  on the class mode screen.



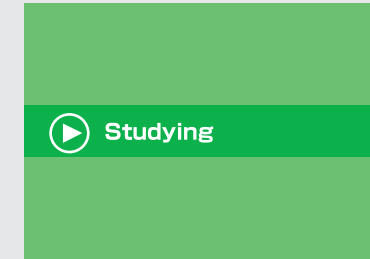
Tablet for teachers

Finishing a class

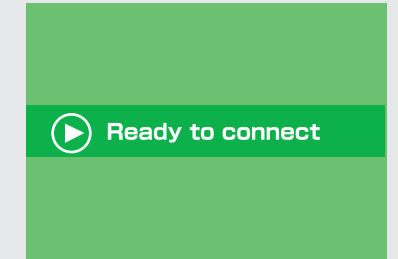
Large display
(Electronic blackboard, etc.)



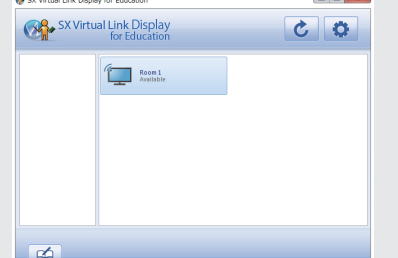
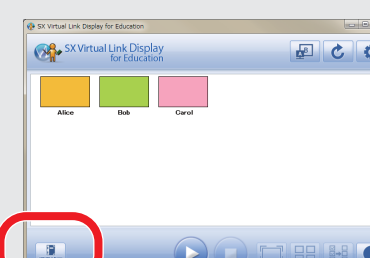
During a class time, standby screen below or the projected screen is displayed.



When the class is finished, the standby screen below is displayed.



Tap  .



The class mode screen is closed and the main screen of SX Virtual Link Display for Education (for Teachers) is displayed.

Tablet for teachers



Tablet for students

During a class time, the screen of SX Virtual Link Display for Education (for Students) is hidden.

After the class is finished, the screen of SX Virtual Link Display for Education (for Students) is displayed.

