

SX-DS-3000WN

Setup Guide

English



Thank you very much for purchasing the wireless USB Device Server "SX-DS-3000WN".
This Setup Guide provides information on how to configure and use SX-DS-3000WN in your network environment. Please follow the instructions on **Step1- Step 4** to configure SX-DS-3000WN.

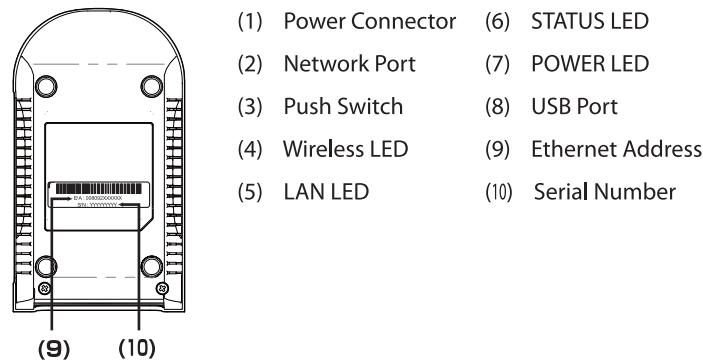
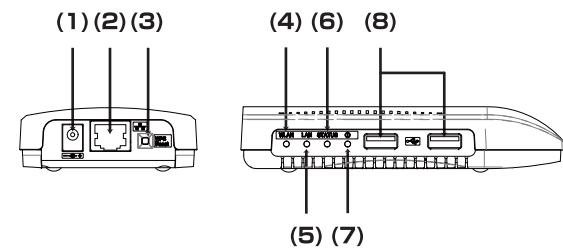
Before you begin, please carefully read the "Safety Instructions" and "About Wireless Interference" in the online manual included in the CD-ROM.



Package Contents

- Please confirm the following items are bundled with SX-DS-3000WN:
- | | |
|---|---|
| <input type="checkbox"/> SX-DS-3000WN | <input type="checkbox"/> Setup Guide (this document) |
| <input type="checkbox"/> AC Adaptor | <input type="checkbox"/> SX Virtual Link User's Guide |
| <input type="checkbox"/> Device Server Setup CD
(Including configuration software and online manual) | <input type="checkbox"/> Warranty Booklet |

Parts and Functions



User Registration

Please complete user registration after you finish the setup.
User registration is required to provide you better technical support and services.

User Registration Website

<http://www.silex.jp/register/>

For user registration, a Serial Number is required. The Serial Number is the last 6-digits of the Ethernet Address(12-digits total) which can be found on the bottom of the unit.

Example: If the Ethernet Address is "00:80:92:00:11:22", the Serial Number will be "001122".

Before You Begin

About configuration methods

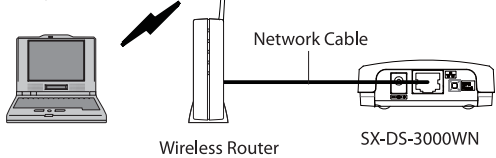
The following 3 configuration methods are supported.

This Setup Guide explains how to configure SX-DS-3000WN using a network cable. For other configuration methods, please refer to the online manual included in the CD-ROM.

- Configuration using a network cable (Recommended)

By connecting SX-DS-3000WN to your existing network using a network cable, you can configure the network settings from your computer. For this method, a network cable is required.

● Sample connection



- Configuration using the WPS feature of your wireless router

If your wireless router supports WPS (Wi-Fi Protected Setup), the network configuration can be done automatically by pressing the wireless connection button on your wireless router and the push switch on SX-DS-3000WN. For this configuration method, a wireless router supporting WPS is required.

- Configuration using a USB flash drive

By saving the configuration information to a USB flash drive and connecting it to SX-DS-3000WN, you can configure the network settings. To save the configuration information to the USB flash drive, please use the configuration utility contained in the CD-ROM. For this configuration method, a USB flash drive is required.

Step1 Check Your Wireless Settings

To use SX-DS-3000WN in your wireless network, SX-DS-3000WN must have the same settings as your wireless router (Access Point). Please check the wireless settings of your router and write them down in the table below:

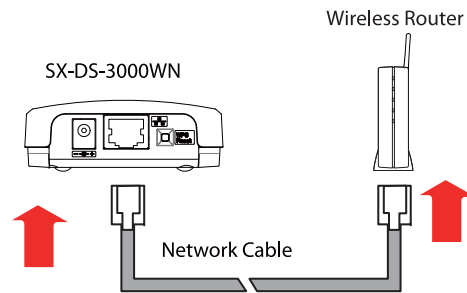
* The information below is specific to your network and cannot be provided by silex technical support. For how to confirm each setting, please refer to the operating manual that came with your router or contact the manufacturer.

Configuration Memo		
Wireless Mode	This can be either "Infrastructure" mode or "Ad hoc" mode. Select "Infrastructure" mode when you wish to connect to your network via a wireless router. Select "Ad hoc" mode when you wish to make a direct connection to your wireless computer without using a wireless router. When using this mode, set the same channel as your wireless computer.	Infrastructure / Ad hoc (ch.)
SSID	The SSID is an ID that distinguishes a wireless LAN network from others. For wireless devices to communicate with each other on a wireless network, they must share the same SSID. (The SSID is also referred to as "ESSID".) Depending on your wireless router, it may have several SSIDs. If there are different SSIDs for a game console and computer, use the one for the computer.	SSID _____
Encryption Mode (Network Authentication)	No Encryption	Uses no encryption for wireless communication. (In this case, you do not have to check any of your settings beforehand.)
	WEP	If WEP encryption is used, wireless communication will be encrypted using the settings for "WEP Key 1-4" and "Key Index". Set the same "WEP Key Size(64bit/128bit)", "WEP Key" and "Key Index" as your wireless router.
	WPA / WPA2	Uses PSK for network authentication. The encryption key will be generated by communicating with the wireless router using a Pre-Shared key. WEP key setting is not used for this mode. Set the same "Pre-Shared key" and "Encryption Mode"(TKIP/AES) as your wireless router. The Pre-Shared key is also referred to as "Network Key" or "Password".
Network Authentication		WEP / WPA / WPA2 (Open / Shared)
WEP Key or Pre-Shared Key		_____
WEP key Size and Key Index or Encryption Mode		_____

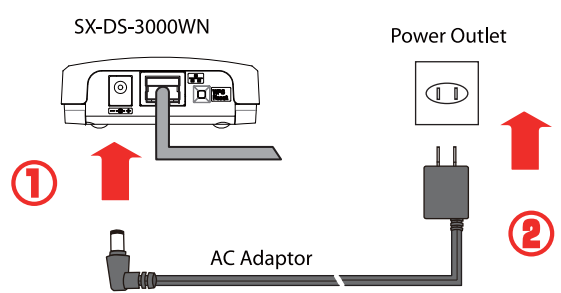
Step2 Power On

Connect SX-DS-3000WN to your network using a network cable.

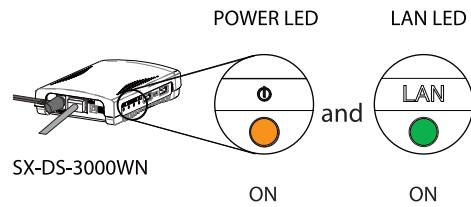
1 Connect SX-DS-3000WN to your wireless router using a network cable.



2 Connect the AC adaptor to SX-DS-3000WN and the AC plug to the power outlet.



3 Confirm that both the POWER LED and the LAN LED turn on.



If the POWER LED is OFF

The AC adaptor is not plugged in properly. Start from **Step2-2** again.

If the LAN LED turns to Green or Orange

SX-DS-3000WN successfully connected to your network. Go on to **Step 3**.

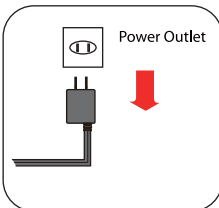
If the LAN LED is OFF

The network cable is not plugged in properly. Start from **Step2-1** again. If the network cable is plugged in properly, SX-DS-3000WN may contain incorrect network settings. In such a case, reset SX-DS-3000WN to factory defaults and start from **Step2-1** again. For details on how to reset SX-DS-3000WN to factory defaults, refer to "Factory Default Configuration".

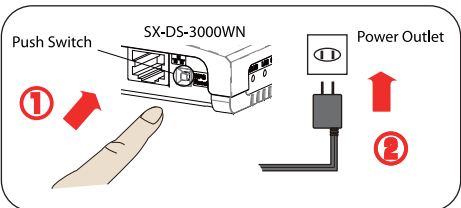
Factory Default Configuration

If SX-DS-3000WN was previously configured for a different network or you wish to start configuration from factory defaults again, follow the instructions to the right.

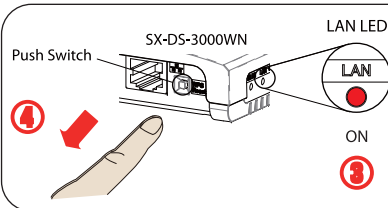
1 Remove the AC plug from the power outlet.



2 Press and hold down the push switch on SX-DS-3000WN while inserting the AC plug back into the power outlet. Keep holding for a while and release the push switch when the LAN LED turns to Red.



Keep holding down the push switch



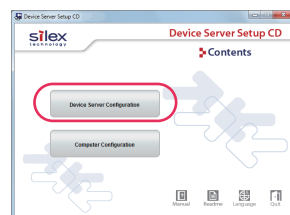
Step3 Setup SX-DS-3000WN

Configure SX-DS-3000WN using the configuration software included in the Device Server Setup CD.
The configuration can be done from Windows or Macintosh computers.

<<< Windows environment >>>

- 1 Insert the Device Server Setup CD into your computer.

- 2 Click **Device Server Configuration**.



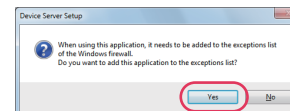
* If the menu screen does not appear automatically, open **My Computer**, select the CD-ROM drive and execute **Autotrun.exe**.

- 3 Click **Configure using the setup utility (Recommended)**.



* In Windows 7 (or Windows Vista), the User Account Control screen is displayed. Click **Yes**. (Click **Continue** in Windows Vista).

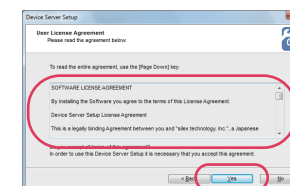
- 4 Click **Yes**.



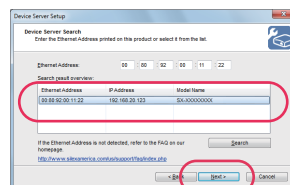
- 5 Read the displayed information and click **Next**.



- 6 Read the software license agreement and click **Yes**.

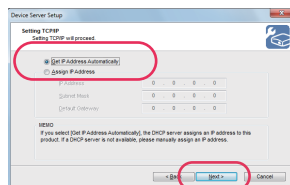


- 7 Select SX-DS-3000WN and click **Next**.



* If SX-DS-3000WN is not displayed in the list,,
- Check that the network settings on your computer (IP address settings) are properly configured.
- Please temporarily disable any security software (e.g. "Norton", "McAfee", etc.) and Windows XP firewall.

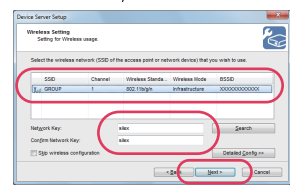
- 8 Select **Get IP Address Automatically** and click **Next**.



* If you wish to assign an IP address manually, click **Assign IP Address** and enter the IP address, subnet mask and default gateway.

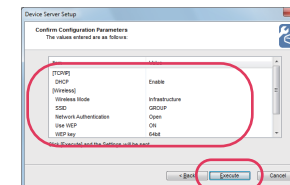
* If the option, "Get IP Address Automatically" does not appear, an IP address cannot be obtained via DHCP server. In such a case, a sample address created with your computer's settings will be displayed. Please enter an IP address manually.

- 9 Select the wireless network that you wish to connect to from the list, enter the network key and click **Next**.



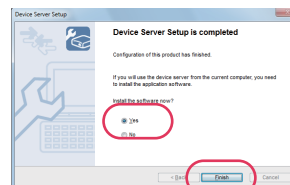
* Use the wireless setting information that you have collected at **Step 1**.
Select the SSID of the wireless network that you wish to connect to and enter the network key.
If the wireless network that you wish to connect to is not shown in the list, click the **Detailed Config** button and configure each setting in the window displayed.
* If you plan to use SX-DS-3000WN on a wired network using a network cable, check **Skip wireless configuration** and click **Next**.

- 10 Confirm your settings and click **Execute**.



* The information displayed here will differ depending on your selection.

- 11 Select **Yes** and then click **Finish**.



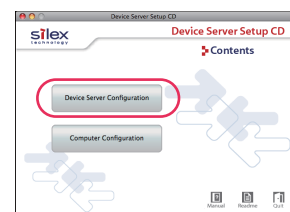
Before clicking **Finish**, follow the instructions on **Step 4** to make your settings take effect. After completing **Step 4**, click **Finish** and go on to install the USB device connection utility, "SX Virtual Link".

<<< Macintosh environment >>>

- 1 Insert the Device Server Setup CD into your computer.

- 2 Double click the CD-ROM icon () and then double click **DSSetup** ().

- 3 Click **Device Server Configuration**.



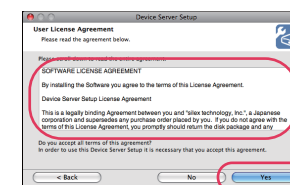
- 4 Click **Configure using the setup utility (Recommended)**.



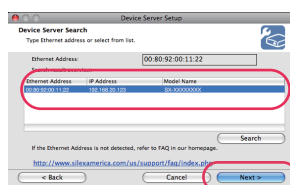
- 5 Read the displayed information and click **Next**.



- 6 Read the software license agreement and click **Yes**.

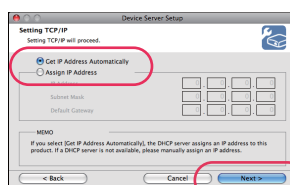


- 7 Select SX-DS-3000WN and click **Next**.



* If SX-DS-3000WN is not displayed in the list,,
- Check that the network settings on your computer (IP address settings) are properly configured.

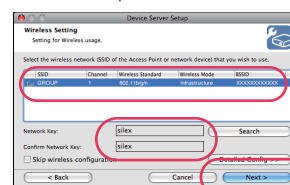
- 8 Select **Get IP Address Automatically** and click **Next**.



* If you wish to assign an IP address manually, click **Assign IP Address** and enter the IP address, subnet mask and default gateway.

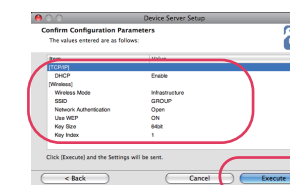
* If the option, "Get IP Address Automatically" does not appear, an IP address cannot be obtained via DHCP server. In such a case, a sample address created with your computer's settings will be displayed. Please enter an IP address manually.

- 9 Select the wireless network that you wish to connect to from the list, enter the network key and click **Next**.



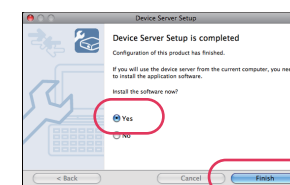
* Use the wireless setting information that you have collected at **Step 1**.
Select the SSID of the wireless network that you wish to connect to and enter the network key.
If the wireless network that you wish to connect to is not shown in the list, click the **Detailed Config** button and configure each setting in the window displayed.
* If you plan to use SX-DS-3000WN on a wired network using a network cable, check **Skip wireless configuration** and click **Next**.

- 10 Confirm your settings and click **Execute**.



* The information displayed here will differ depending on your selections.

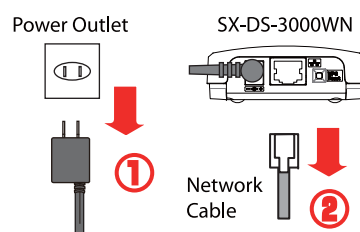
- 11 Select **Yes** and then click **Finish**.



Before clicking **Finish**, follow the instructions on **Step 4** to make your settings take effect. After completing **Step 4**, click **Finish** and go on to install the USB device connection utility, "SX Virtual Link".

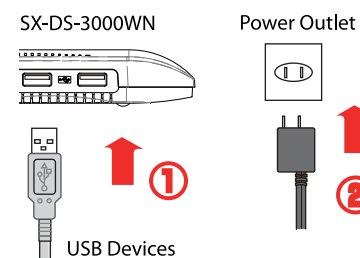
Step4 Enable the New Settings

- 1 Remove the AC plug from the power outlet and the network cable from SX-DS-3000WN.

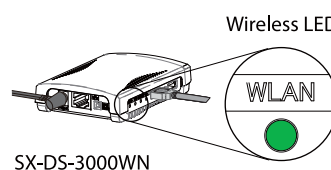


* If you plan to use SX-DS-3000WN on a wired network, it is not necessary to unplug the network cable.

- 2 Connect the USB device that you wish to use over the network to SX-DS-3000WN using a USB cable and then insert the AC plug of SX-DS-3000WN into the power outlet.



- 3 Confirm that the Wireless LED turns on.



If the Wireless LED turns to Green

SX-DS-3000WN successfully connected to the wireless network. The setup is now complete.

If the Wireless LED blinks in Orange

SX-DS-3000WN is searching for a wireless network. Please wait until a wireless connection is made. If there is no connection within 2-3 min, SX-DS-3000WN's wireless settings may not have been configured properly. Go back to **Step 1** and check the wireless setting information once again.

If the Wireless LED is OFF

The network cable is plugged in. If you intend to use SX-DS-3000WN in a wireless network, follow the instructions from **Step 4-1** again. If you intend to use SX-DS-3000WN in a wired network, check the LAN LED's lighting pattern. If the LAN LED turns to Green or Orange, SX-DS-3000WN has been connected to a wired network. The setup is now complete.

- 4 Go on to install the USB device connection utility, **SX Virtual Link**. Please refer to the "SX Virtual Link User's Guide".