

WA00970XA
200406

Users Manual SX

Index

1. Introduction	1-1
Safety Instructions	1-3
2. PRICOM SX-5000U2	2-1
Operating Environment	2-3
Equipment Explanation	2-4
Part and Function	2-4
Restore Factory Default	2-5
Self Diagnostic/ Configuration Printing	2-5
How to Connect	2-6
Connect This Product to USB Devices and the Network	2-6
Additional Functionality	2-8
Function	2-8
Specification	2-12
Hardware Specification	2-12
Software Specification	2-13
3. PRICOM User Software SX	3-1
Boot PRICOM User Software SX	3-1

4.Setting up This Product	4-1
Configure This Product.....	4-1
Quick Setup	4-1
Advanced Setup.....	4-10
JC-Print2002	4-13
Setup Using a USB Storage Device	4-16
 5. UNIX/Linux Environment	 5-1
Configure Host File	5-1
Printing by LPD	5-2
Using PRICOM in Solaris Environment.....	5-3
Solaris 2.6/7/8	5-3
Solaris 2.3x-2.5x	5-5
Using PRICOM in HP-UX 9.x/10.x Environment.....	5-7
Using setnetlp Tool	5-9
Using PRICOM in AIX 4.x.x Environment	5-14
Using PRICOM in BSD UNIX Environment	5-16
Using PRICOM in Linux Environment	5-18
Using Print Queue Creation Tool of Red Hat Linux	5-20
Using the Print Queue Creation Tool of Turbo Linux	5-21
Printing Using FTP	5-22
Printing	5-23
Checking the status	5-25

6. Macintosh Environment	6-1
Setup and Printing	6-2
Mac OS 8/9	6-2
Setup AppleTalk service	6-2
Printing	6-3
Mac OS X	6-4
Enable the Apple Talk Service	6-4
Printing	6-5
Setup the TCP/IP (MacTCP) Protocol	6-6
Configure the TCP/IP (Mac TCP) Protocol	6-6
Installing and Using AdminManager	6-7
Printing Using Rendezvous	6-10
 7. Scanner Server Function	7-1
Initial Setup	7-2
Connect this Product to the Network and the USB Scanner	7-2
Install the PRICOM USB Utility	7-3
Using the PRICOM USB Utility	7-6
PRICOM USB Utility Definitions	7-9
PRICOM USB Utility Screens	7-9
Option Dialogue	7-10

8. Storage Server Function	8-1
Initial Setup	8-2
Connect the USB Storage Device to this Product	8-2
Sharing a USB Storage Device	8-3
Share a USB Storage Device in Windows98/Me	8-3
Verify the network configuration in Windows 98/Me (NetBEUI).	8-3
Verify the network configuration in Windows 98/Me (NetBIOS over TCP/IP)	8-4
Use a USB storage device in Windows 98/Me	8-5
Share a USB Storage Device in Windows 2000	8-6
Verify the network configuration in Windows 2000(NetBEUI)	8-6
Verify the network configuration in Windows 2000 (NetBIOS over TCP/IP)	8-7
Use a USB storage device in Windows 2000	8-8
Share a USB Storage Device in Windows XP/ Windows Server 2003	8-9
Verify the network configuration in Windows XP/ Windows Server 2003	8-9
Use a USB storage device in Windows XP/Windows Server 2003.....	8-11

9. PRICOM Monitor SX	9-1
About PRICOM Monitor SX	9-1
Starting PRICOM Monitor SX	9-1
Display PRICOM Monitor SX (Character Mode)	9-2
Menu	9-3
Display PRICOM Monitor SX (Full Mode)	9-4
Printer Status Information	9-4
System Information	9-5
Menu	9-5
Options Setting	9-6
Status Monitor	9-6
Display tab	9-7
Character	9-8
10. Questions and Answers	10-1
The main menu does not start after inserting the CD-ROM	10-1
This product is not found after searching in the configuration utility (QuickSetup, AdminManager) or this product is not recognized on the network	10-1
Print job will not print	10-1
I get an error message while printing.	10-3
This product cannot perform LPR printing.	10-3
Can this product be returned to a factory default?	10-3
I can not share a USB scanner.	10-3
A USB storage device is not sharable.	10-3

Appendix	1
Print Using a LPR Port Windows 2000/Windows XP/ Windows Server 2003.	1
Print Using a Windows 2000/Windows XP/ Windows Server 2003 Standard TCP/IP Port	2
Print Using a Windows 2000 LPR Port	7
Print Using a Windows XP, Windows Server 2003 LPR Port	10
Print Using a Windows 2000/XP and Windows Server 2003 IPP Port	13
Printing NetBEUI/NetBIOS over TCP/IP	15
Verify the Network Configuration on Windows PC	15
Print Setting	17
Configuring via a Web Browser	19
Connect to the This Product	19
This Product HTTP Screens	20
Telnet	25
Configuration Settings	39
 User Registration	 1

1. Introduction

This product is a USB 2.0 Hi-Speed multi-function print server which can be used in a variety of network environments, from a small-scale network to a large-scale network environment where two or more network protocols are intermingled.

This product enables a printer, scanner, or storage device to be shared over the network. In addition by using PRICOM Monitor SX the printer status (offline, paper out, printing, etc.) can be monitored from a personal computer for the networked printer.

<PRICOM SX-5000U2>

USB interface mini print server

Network Interface :10BASE-T, 100BASE-TX (automatic negotiation)

Printer Interface :USB2.0 Hi-Speed (A type) x 4 ports

Supported Protocols and Operation system

Function	Supported Protocol	Supported Operating system
Print Server Function	TCP/IP NetBEUI/NetBIOS AppleTalk	Windows 98/Me Windows 2000 Windows XP Windows Server 2003 UNIX/Linux MacOS 8.6 and above MacOS X 10.2 and above
Scanner Server Function	TCP/UDP # 19540 (Original Protocol)	Windows 2000 Windows XP Windows Server 2003
Storage Server Function	NetBEUI/NetBIOS	Windows 98/Me Windows 2000 Windows XP Windows Server 2003

[About this Manual]

- Copying all or part of this manual without our permission is forbidden.
- The contents of this manual may be changed without advance notice.
- If you have any question about this manual or our products, please contact our customer support.
- Please note that the actual screens will vary from the examples in this manual. This is caused by different versions of operating systems on the PC, upgrades, etc.
- This manual has been edited very carefully. However, silex technology, Inc. is not responsible for any mistakes included in this manual or any damages, direct or indirect, arising from the use of this manual.
- PRICOM is a registered trademark of silex technology inc.
- Microsoft, Windows, Windows NT etc. are registered trademarks of Microsoft Corporation in the U.S. and other countries.
- Other brand or product names are registered trademarks or trademarks of their respective companies.

[About the notation]

This manual uses the following symbols to point out specific information. The information after the symbols should always be followed.



This symbol indicates important information that needs to be observed when operating the product. Make sure to read this information for safe and proper use.



This symbol indicates information that is useful when using the product. If you experience difficulties operating the product, please refer to this information first.

Safety Instructions

- To ensure safe and proper use, please read the following information carefully before using our product. The safety instructions include important information on safe handling of the product and on general safety issues.
- This manual contains safety instructions that must be observed to avoid potential hazards that could result in personal injuries or material damage. The safety instructions have been classified according to the potential risk involved as follows:



Danger

“Danger” indicates the existence of a hazard that could result in bodily injury if the safety instruction is not observed.



Warning:

“Warning” indicates the existence of a hazard that could result in material damage if the safety instruction is not observed.

Examples



This symbol warns of possible danger.

The danger symbol will contain another symbol or have a picture near it. (This warns of possible electrical shock)



⊘ This is the prohibit symbol.

This symbol will include another symbol or have a picture near it to indicate what is prohibited.



⊘ This is the prohibit symbol.

This symbol indicates what is prohibited specifically.



This indicates a regulation by its contents.

The regulation will appear inside or near this symbol. (Indicates to unplug).



Warning about physical connections

	Do not allow physical impact: When damaged, unplug this product from power and contact your point of purchase. Failure to take this action could cause fire or an electrical shock.
	Keep the cord and cables away from children. They may be injured or receive a shock
	If this product is detached from the device(s), unplug the power to the device(s) before reconnecting.
	If the printer has a ground wire, it must be used to prevent electrical shock and power surges.



The following warnings should be observed during use.



Do not disassemble or modify the cover of this product.



Do not use this product with the case removed. You may receive an electric shock.



Do not attempt to check, adjust or repair this product by yourself. You may receive an electric shock.

Check with your dealer if the product needs to be repaired.



If this product becomes hot, or you smell smoke, turn off the printer then unplug the power cable and disconnect this device immediately.



If a foreign object (liquid, metal) gets into this product, turn off the printer then unplug the power cable and disconnect this device immediately.

Contact your dealer about repairing this product.



Warning about physical connections



When unplugging this product, do not pull on the cord. The cord may break resulting fire and/or electric shock. Pull on the plug only.

Do not put this product on an unstable location. The product may fall causing injury or damaging the product.

Do not put this product in a humid or dusty place. Fire or electric shock may occur.



When moving this product, disconnect the power and printer cables. Fire or electric shock may occur.





The following warnings should be observed during use.



When the product will not be used for an extended time, disconnect and unplug the power cable.



Verify all cables are connected properly before using this product.

2. PRICOM SX-5000U2

This product is a USB HI-Speed multi-function print server which can connect two or more USB devices. This product can simultaneously share the maximum of four USB devices including a printer, scanner, or storage device to be shared over the network. In addition by using PRICOM Monitor SX the printer status (offline, paper out, printing, etc.) can be monitored from a personal computer for the networked printer.



- Windows2000, WindowsXP, or Windows Server 2003 is required to use the network scanning function.



- Refer to our web page (<http://www.silex.jp>) for the latest product information.
- The following indicates maximum number of connectable USB devices to this product.

USB-HUB	: 2
USB Printer	: 4
USB Storage	: 4
USB Scanner	: 1

This equipment has been tested and found to comply with the limits for a Class B digital device, pursuant to Part 15 of the FCC Rules. These limits are designed to provide reasonable protection against harmful interference in a residential installation. This equipment generates, uses, and can radiate radio frequency energy and, if not installed and used in accordance with the instructions, may cause harmful interference to radio communications. However, there is no guarantee that interference will not occur in a particular installation. If this equipment does cause harmful interference to radio or television reception, which can be determined by turning the equipment off and on, the user is encouraged to try to correct the interference by one or more of the following measures:

- Reorient or relocate the receiving antenna.
- Increase the separation between the equipment and receiver.
- Connect the equipment into an outlet on a circuit different from that to which the receiver is connected.
- Consult the dealer or an experienced radio/TV technician for help.

This device complies with Part 15 of the FCC Rules. Operation is subject to the following two conditions: (1) This device may not cause harmful interference, and (2) this device must accept any interference received, including interference that may cause undesired operation.



EN55022 Class-B
EN55024

Operating Environment

The following are needed for using this product.

System Requirements:

- Network cable (Cat 5 or better)
- HUB (10BASE / 100BASE-TX Ethernet HUB)
- USB cable (A-B type)
- USB device (Printer, Scanner, Storage)

Operating System:

Function	Supported Operating System
Print Server Function	Windows 98/Me UNIX/Linux Windows 2000 MacOS 8.6 and above Windows XP MacOSX 10.2 and above Windows Server 2003
Scanner Server Function	Windows 2000 Windows XP Windows Server 2003
Storage Server Function	Windows 98/Me Windows 2000 Windows XP Windows Server 2003

Operating Environment:

- Temperature : 10°C to 35°C
- Humidity : 20% to 80% RH (no condensation allowed)

Storage Environment:

- Temperature : -10°C to 50°C
- Humidity : 20% to 90% RH (no condensation allowed)

Power Consumption:

- 5V ± 5% Max2.4A

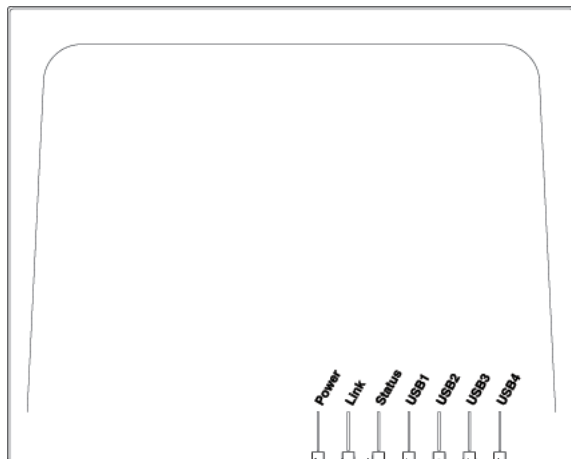
EMI:

- VCCI Class B
- FCC Class B
- EN55022 Class B
- EN55024

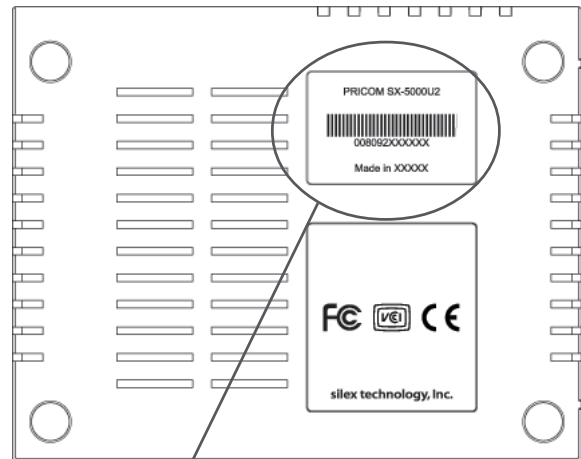
Equipment Explanation

Part and Function

<TOP>

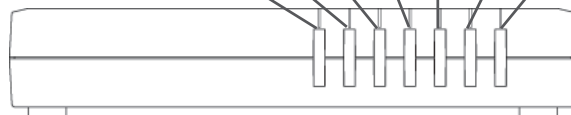


<Bottom>



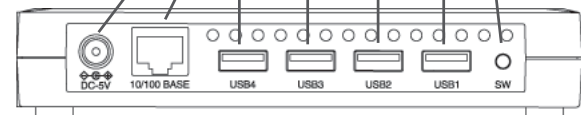
Serial Number (Ethernet Address)

<Front>



Power Supply LAN Connector USB1-4 Push SW

<BACK>



<Top/Front>

- Power LED (Orange)
The light will be switched on, if AC adapter is connected and has power.
- Link LED (Green)
The light will be switched on, if a LAN cable is connected and network connection is established.
- Status LED(Orange)
This will blink during communication.
- USB1 - USB4 LED (Green)
The light will be switched on, if a device is connected to the corresponding USB port.

<Bottom>

- Ethernet address
The Ethernet address is indicated. The last 6 numbers is the product serial number.



NOTE

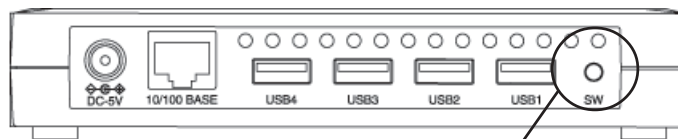
- For example if the Ethernet address is 008092180E1A [00:80:92:18:0E:1A], the product serial number is 180E1A.

<Back>

- Power supply connector
AC adapter is connected here.
- LAN connector
A network cable is connected here.
- USB1-USB4 Port
Up to four USB cables (A type) are connected here.
- Push SW
By pushing the push switch, the server can be restored to factory-default settings or do a self-diagnosis and print the configuration settings.

Restore Factory Default

1. Please verify that AC adapter is not connected to this product.
2. While pushing the push switch, connect the AC adapter to the power supply connector of this product. Shortly after a power is supplied, all of the Light Emitting Diodes will light and then will turn off again.
3. Push and hold the push button switch. Continue holding for about 5 seconds. The Power and Status Light Emitting Diodes will light when the factory default configuration settings have been restored. Now release the push button switch.



Push SW



TIP

- Do not turn off the power to this product while it is initializing to factory default.
- When this product is turned on again after factory default is completed, do not push the push switch.

Self Diagnostic/ Configuration Printing

1. Please verify that AC adapter is connected and that this product has started normally.
2. Please verify that the printer is connected and ready to print.
3. Please verify that the printer is powered on.
4. If the push button switch is pushed, while the PRICOM is powered on, and held for more than 5 seconds a self-diagnosis/internal setup will print.



TIP

- Do not turn off the printer until the printing of self-diagnostic/configuration settings has finished.
- The printer must have an internal font for the self-diagnostic/configuration settings to print.
- The self diagnostic and configuration is available in only USB1 port.

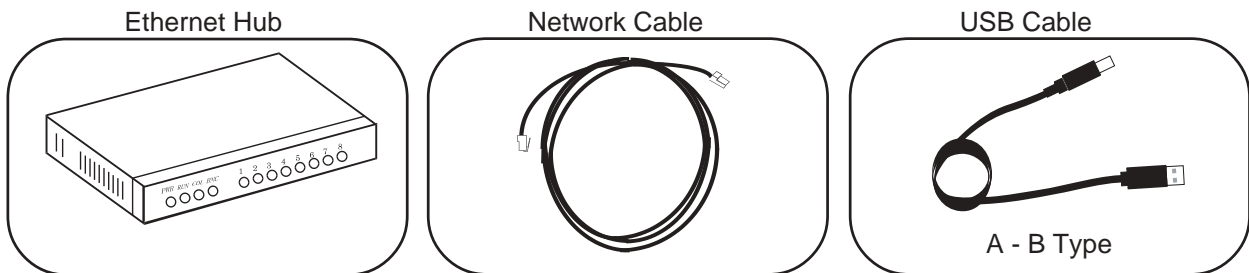
How to Connect

Connect This Product to USB Devices and the Network



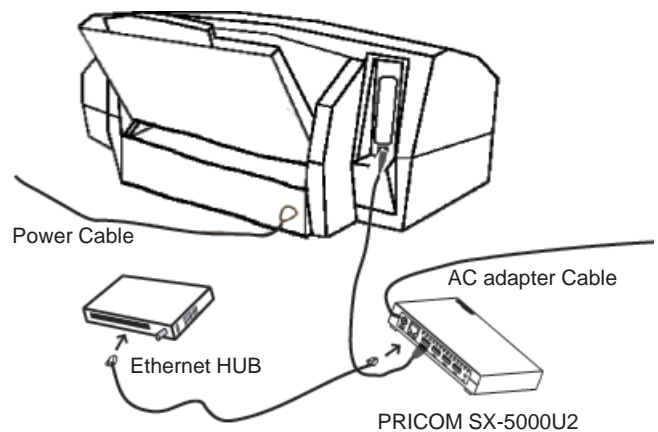
- If this product has been used in another network, return it to factory default prior to setup.

The following items are required in order to connect this product to a network.



- The following explanation is based on using a printer.
- Be sure that this product is powered prior to powering up the connected USB device.

1. Connect the AC adapter to this product.
2. Insert the power cable of printer into an electrical outlet.
3. Connect the network cable from an Ethernet HUB to this product.
4. Use a USB cable to connect this product(type A connector)to a printer(type B connector)



- The shape of the connectors on a USB cable have 2 different types.

<USB connector shape>



A Type



B Type

5. Power on the printer and verify that it is operating normally.



- While printing or scanning do not disconnect or connect a USB cable.
- Do not disconnect the USB or Ethernet cable while writing to a storage device. The data can be corrupted.
- Silex Technology is not responsible for lost, stolen, or corrupted data.

Additional Functionality

The additional functions of this product are shown below.

Function

- DHCP/BOOTP

The IP address settings for this product can be automatically configured if the network is using TCP/IP and has a DHCP/BOOTP server.



- The DHCP protocol is based on RFC 2131/2132.
- Consult with your network administrator when using the DHCP/BOOTP function.

- RARP

The IP address of this product can be set up using RARP. The network must have an RARP server.



- Consult with your network administrator when using the RARP function.

- ARP

The IP address for this product can be assigned by using the ARP command. To do this the combination of IP address and Ethernet address must be registered on a PC or UNIX workstation.

Examples)

<Windows PC>

```
arp -s 192.168.85.113 00-80-92-xx-xx-xx
```

(IP Address) (Ethernet Address)

Confirm the ping command, "ping 192.168.85.113"

<UNIX workstation>

```
arp -s 192.168.85.113 00:80:92:xx:xx:xx temp
```

(IP Address) (Ethernet Address)

Confirm the ping command "ping 192.168.85.113"



- This product will assign an IP address by the ARP command, when this product's status is a factory default.

- FTP

A file can be sent to this product for printing using FTP.



- The FTP in this product is based on RFC959.
- The directory name for printing by FTP needs to specify "lp_u1", "lp_u2", "lp_u3" or "lp_u4".

- IPP

This product supports the "Internet printing protocol"(IPP Ver1.0). It allows printing via the Internet. IPP is a method to easily print to a printer which is in a remote place.



- When printing to a remote place using the IPP function of a this product, it is necessary to make that IP address global. Consult with your network administrator for details.

- Web Browser capability

This product has embedded HTTP; It allows a web browser to access this product . From a web browser, this product's status as well as the printer's status can be monitored, and this product 's configuration can be changed.



- Internet Explorer 4.0 and Netscape Navigator4.0 or later are recommended.
- When you use other browsers, it must support HTTP1.0(RFC1945)and HTML2.0(RFC1866).
- An IP address must be assigned via TCP/IP prior to using the web functionality.

- Network Plug & Play

This product can be automatically detected in Windows Me/XP. Simply connect this product to a network and Windows Me/XP will automatically detect and display this product in "My Network Places". By choosing a device, the web page of this product will start(see web browser capability).



- An IP address must be assigned via TCP/IP prior to using the web functionality.

- IPv6

This product supports IPv6 the next-generation internet protocol. IPv6 can be used to perform setting changes via telnet to http and printing using ftp or lpr.



- This product does not support DHCPv6.
- The bundled tools(AdminManager etc)do not support in IPv6.
- A banner page will not be printed in an IPv6 network environment.

- WINS

This product supports the WINS function. When powered on it will register the NetBIOS name and IP address with the WINS server specified.



- When using DHCP, this product will use the WINS server information provided by the DHCP server. The WINS server information entered during configuration will be used if the DHCP does not provide the WINS server information.

- NetBEUI/NetBIOS

This product supports NetBEUI/NetBIOS printing. NetBEUI/NetBIOS is also used to access USB storage devices.



- If you do not access this product for more than 1 minute over NetBEUI/NetBIOS, this product will disconnect automatically.
- USB storage device connected to this product is shared by the name of "DRIVE1", "DRIVE2", "DRIVE3", and "DRIVE4."

- Browse Master

This product supports the Browse Master function, and when Browse Master does not exist in Workgroup, this product manages as Browse Master.



- The Browse Master capability of this product is not designed to manage other devices than print servers.
- When Browse Master already exists in Workgroup, the function will be disabled on this product.
- This product can manage up to a maximum of 32 devices.

- Rendezvous

This product supports the Rendezvous function of Mac OS X Ver10.2.3 and newer. A printer can be added from the print center.

- USB Scanner server

This product can be used to share a scanner or scanner function of multifunction device across the network by using the bundled PRICOM USB Utility.



- The scanner server function requires Windows 2000, Windows XP, or Windows Server 2003.

- USB Storage device server

USB storage devices can be shared across a network when connected to this product. The devices are shared by using the NetBEUI/NetBIOS protocol.

- E-Mail alert

This product supports the SMTP protocol. This product will send an e-mail to up to 2 defined e-mail addresses when a selected change of printer status occurs. This function allows the network manager to effortlessly monitor the status of the printers.



- The printer must have error alert capability in order to use the this function.

Specification

Hardware Specification

CPU:

32bit RISC CPU 200Mhz

Memory:

RAM : 8MByte

FlashROM : 2MByte

Network Interface:

10BASE-T/100BASE-TX 1port (Automatic sensing)

USB Interface:

USB2.0 Hi-Speed (Type A) 4 Port

Bus Power

USB1 Port :MAX 200mA

USB2 Port :MAX 500mA

USB3 Port :MAX 640mA

USB4 Port :MAX 200mA

Other:

Push switch :1 Button

Light Emitting Diode lamp

:Power (Orange), Link(green), Status(green),

USB1(green),USB2(Green), USB3(Green), USB4(Green)

Software Specification

Supported Protocol

TCP/IP, NetBEUI/NetBIOS, AppleTalk

TCP/IP:

Network Layer	:ARP, RARP, ICMP, IP, IPv6, ICMP6
Session Layer	:TCP, UDP
Presentation Layer	: WINS
Application Layer	:LPD, TELNET, BOOTP, SNMP, HTTP, DHCP, IPP, #9100, DNS NetBIOS, FTP, SMTP



- An IP address is assigned by using the setup utility.

NOTE

NetBEUI/NetBIOS:

SMB, NetBIOS

AppleTalk:

AppleTalk Phase2, ELAP, AARP, DDP, AEP, NBP, RTMP, ZIP, ATP, PAP

Other:

SNMP MIB-2, HostResource-MIB, JCI-PrivateMIB(silex original MIB)

3. PRICOM User Software SX

Boot PRICOM User Software SX

To start the PRICOM User Software SX, insert the bundled CD into the CD-ROM drive of a PC. The screen below will be displayed automatically.



- If the startup screen does not appear automatically, open the CD-ROM drive of "my computer", and run "AUTORUN.EXE."



- Read me

This contains important information about this product. Please read before proceeding.

- Setup

Select this button to proceed with the setup. The setup screen will have different tools to assist you. Choose the tool that matches your needs.

- Manual:

Selecting this will launch Acrobat Reader and bring up the manual.

- LANGUAGE

Select the language you would like to use.



- Quick Setup

This wizard is an easy setup tool which sets the IP addresses of this product. It allows you to search/discover the products on the network and configure the basic TCP/IP parameters such as IP address, subnet mask or gateway address.

- Advanced Setup

This tool performs a detailed setup of this product. All of the configuration items can be set using this utility.

- JC-Print2002

This is a Windows 98/Me, Windows2000/XP, and Windows Server 2003 printing software.



TIP

- JC-Pint2002 is a print client software that will work with our products only.



NOTE

- This product supports standard Windows 2000/XP, Windows Server 2003 LPR printing.

- Option

The following tools are included.

- PRICOM USB Utility (USB-Ethernet connection driver)
- Setup Assistant (multiple print server simultaneous configuration utility)

4. Setting up This Product

This chapter explains how to setup this product as a print server / scanner server / storage server.

Configure This Product

In order to use this product, an IP address must be configured on this product. This section will explain how to configure this product using the User Software SX that is bundled with this product.

Quick Setup

Before proceeding, make sure that product has power and has been connected to the network. The link light should indicate that product can communicate on the network. Refer to chapter 2. PRICOM SX-5000U2 for how to connect this product with the other devices.

1. This screen will appear automatically after inserting the User Software SX CD into your Windows PC. Click **Setup** to proceed.

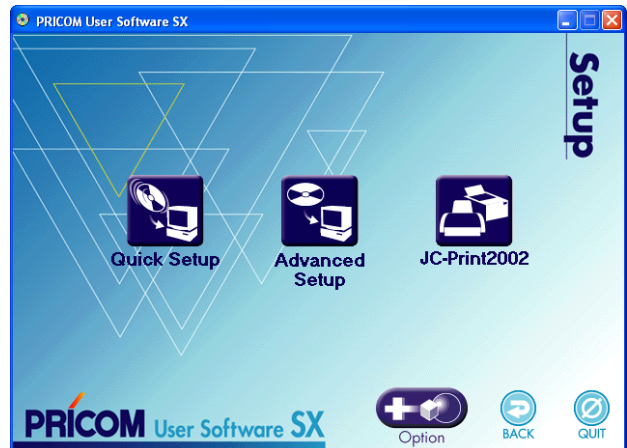


TIP

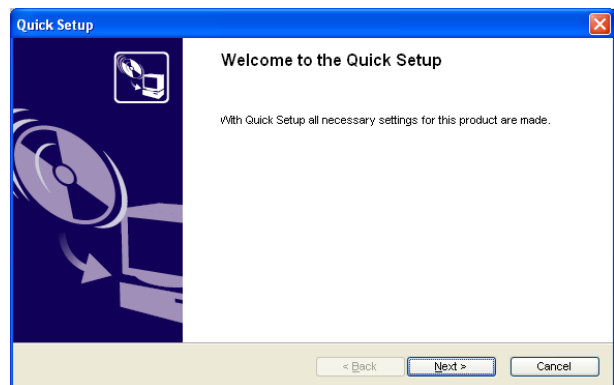
- If the screen does not appear automatically, open My Computer, select the CD-ROM drive and execute "AUTORUN.EXE".



2. Click **Quick Setup**.



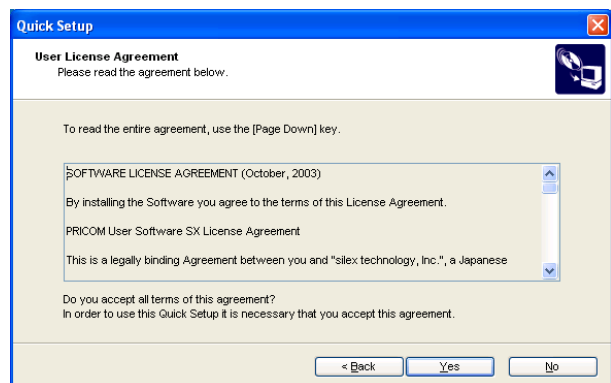
3. Quick Setup loads. Click **Next**.



4. Click **Yes** if you agree to the software license agreement.



- If you do not agree to the software license agreement, you cannot use our products.



5. Select this product to be configured, click **Next**.



- If this product does not appear in the list, click **Search**.

Quick Setup

Print Server Search
Type Ethernet address or select from list.

Ethernet address can be found at the back of the product.

Ethernet Address: 00 : 80 : 92 : 00 : 12 : 16

Search result overview:

Ethernet Address	IP Address	Model Name
00:80:92:00:12:16	192.168.70.235	SX-5000U2

Search

< Back Next > Cancel

6. Assign an IP address, click **Next**.



- When using DHCP/BOOTP server etc. please check "Get IP Address Automatically."

Quick Setup

Setting TCP/IP
Setting TCP/IP will proceed.

☐ Get IP Address Automatically

☒ Assign IP Address

Please assign an IP address for this product.

192 . 168 . 70 . 235

MEMO
If you select [Get IP Address Automatically], the DHCP server assigns an IP address to this product. If a DHCP server is not available, please manually assign an IP address.

< Back Next > Cancel

7. Verify the configuration parameters.
Click **Execute** if they are correct.



- The configuration will be written in this product via the network, and reboot automatically.

Quick Setup

Confirm Configuration Parameters
The values entered are as follows:

Item	Value
[TCP/IP]	Enable
[DHCP]	Disable
[IP Address]	192.168.70.235
[NetWare]	Enable

Click [Execute] and the Settings will be sent.

< Back Execute Cancel

The setup is now complete.

You can continue to install "JC-Print2002" printing application. If JC-Print 2002 has already been installed, select **No**. If you wish to continue to install the printing application, check **Yes**, and go to section 9.



NOTE

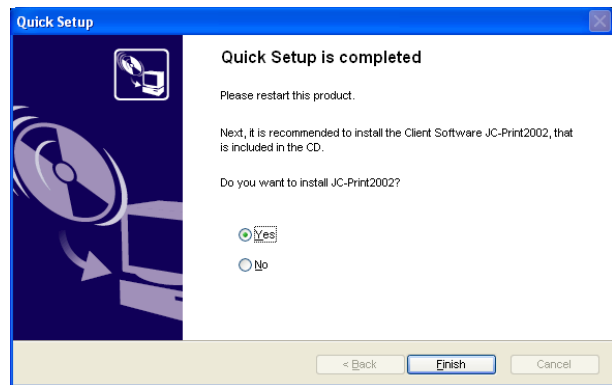
- If JC-Print 2002 has already been installed you can use the port that has already been created.
- Choosing no will end the installation wizard. JC Print 2002 can be installed directly from the main menu.

8. Check **Yes**, Click **Finish**.

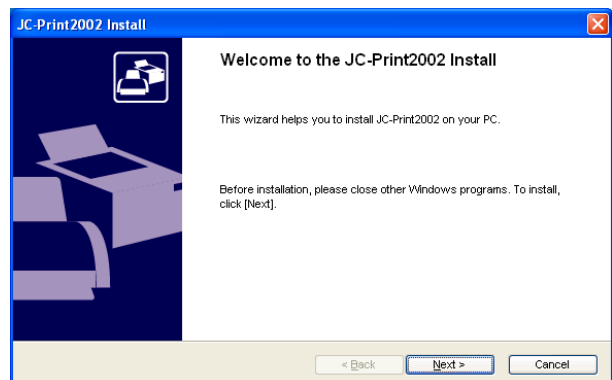


TIP

- If you chose **No**, QuickSetup quits.



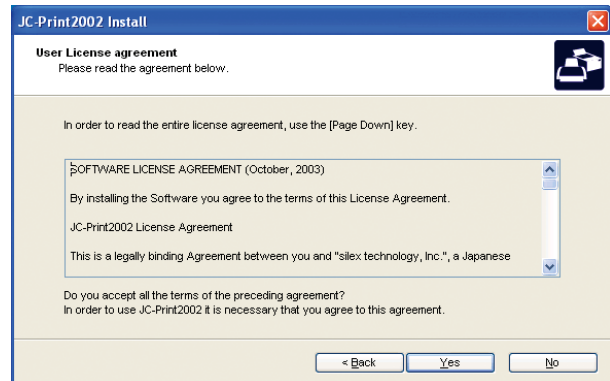
9. Start the JC-Print2002 installation wizard. Click **Next**.



10. Click **Yes**, If you agree to the software license agreement.



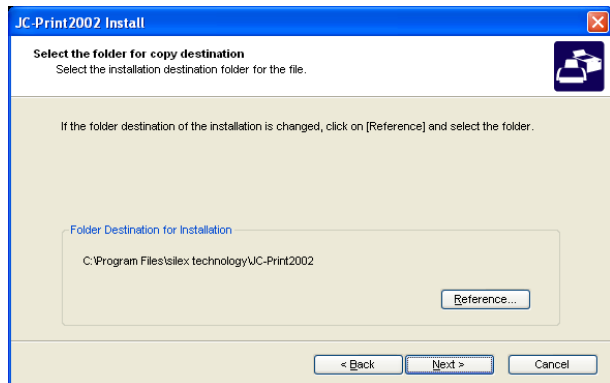
- If you do not agree with the software license agreement, you cannot use our products.



11. Verify the destination directory, and click **Next**.



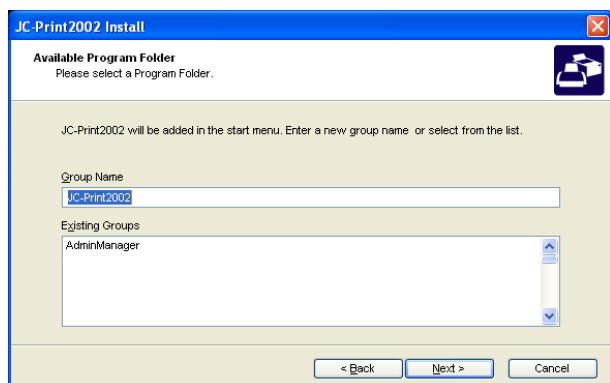
- Click **Reference** to specify the destination directory.



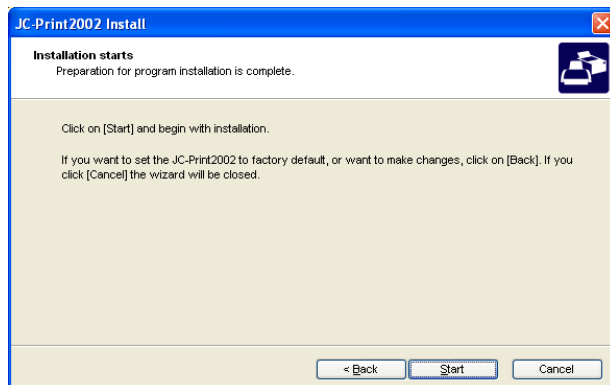
12. Specify the group name to be registered at the start menu.



- The default group name is JC-Print2002. The Group Name can be changed by entering a new or be added in existing group folder.



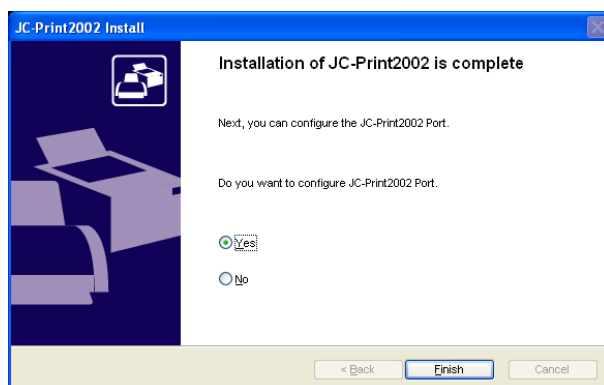
13. When the installation screen appears, click **Start**. The JC- Print2002 installation begins.



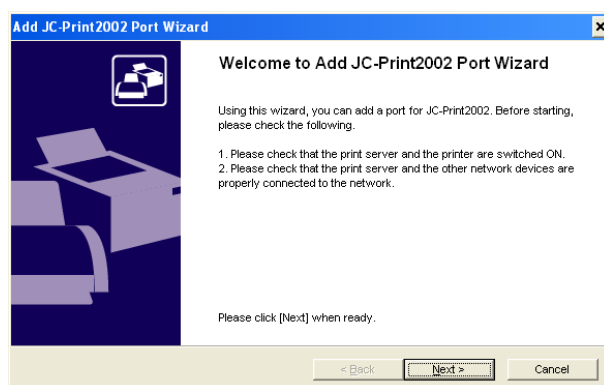
14. If you want to continue creating a printing port, select **Yes**. Click **Finish**.



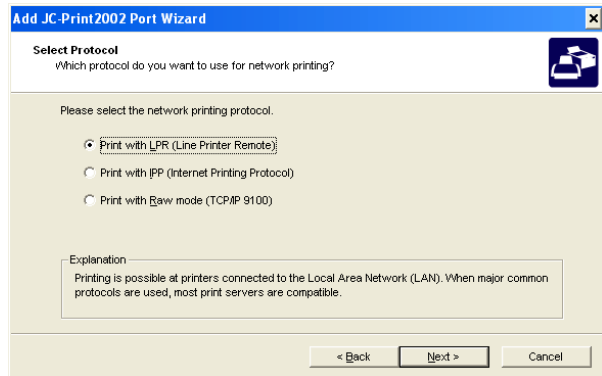
- If you do not want to create a port at this time, click **No**.



15. Click **Next**.



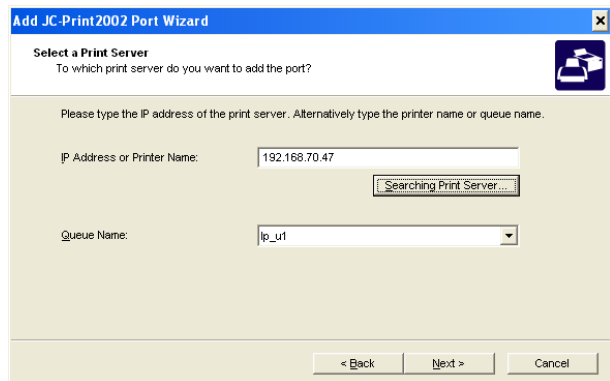
16. Select **Print with LPR(Line Printer Remote)**. Click **Next**.



17. Type in an IP address in the **IP address or Printer Name** box. And Select the Port name in the **Queue Name** box. Then click **Next**.



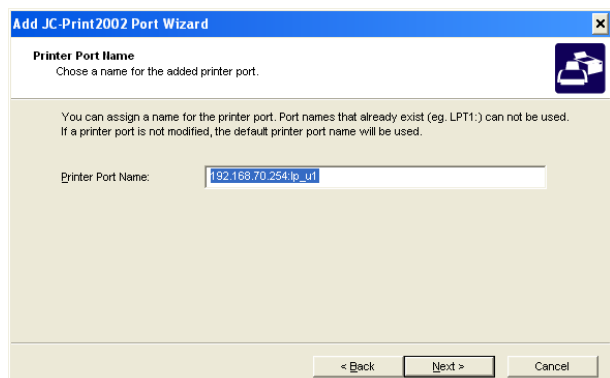
- Select **Searching Print Server** to display, a list of our products currently on the network. Select the one that you want to print to.



18. Type in a printer port name. Click **Next**.



- Use the default printer port name (specified IP address and a queue name) if you do not want to create a specific name, then click **Next**.

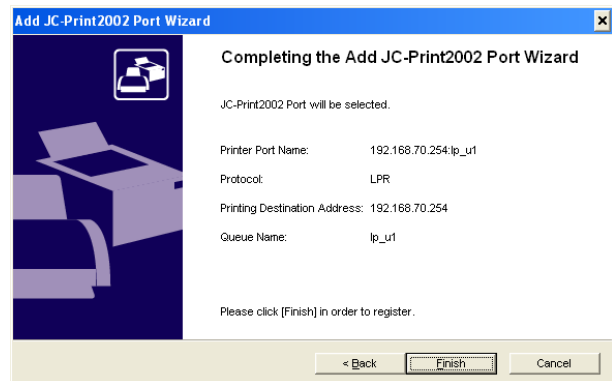


19. Verify the configuration. Click **Finish**.

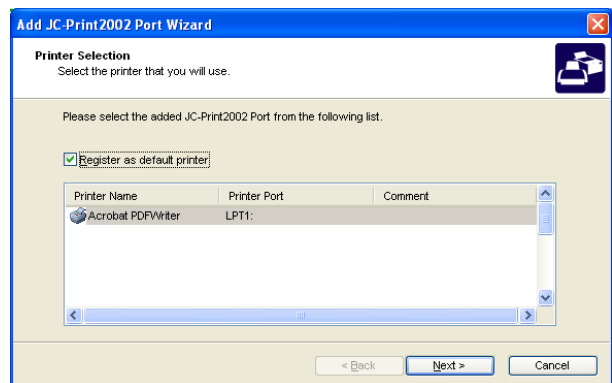


NOTE

- If the configuration is not correct, click **Back** to correct the configuration.



20. Select the printer you want to use with this product. Click **Next**



21. JC-Print2002 port configuration is complete. Click **Finish**.



The setup for this product and PC has been complete. Print a test page to verify that it is working properly.

The Quick Setup is only required for the initial configuration of this product. Once this product has been configured, it is not necessary to run the Quick Setup again.

Advanced Setup

Prior to using Advanced Setup, this product should be connected to the LAN. It is also recommended, if you are going to use a printer, to have it attached and ready to print. Verify that this product link light is on and that the printer is ready to print. Refer to 2.PRIOCM SX-5000U2 for how to complete connecting this product to a printer.

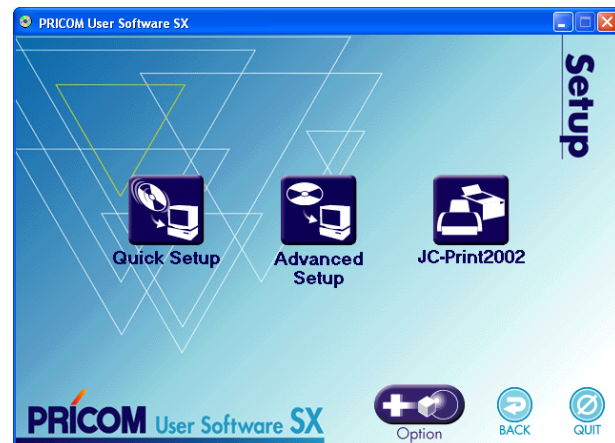
1. This screen will appear automatically after inserting the User Software SX CD into your Windows PC. Click **Setup** to proceed.



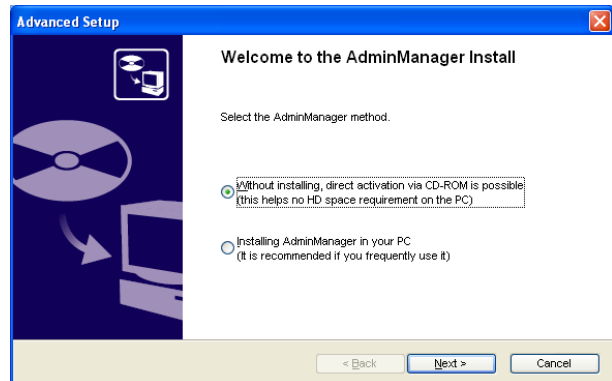
- If the screen does not appear automatically, open My Computer, select the CD-ROM drive and execute "AUTORUN.EXE".



2. Select **Advanced Setup**.



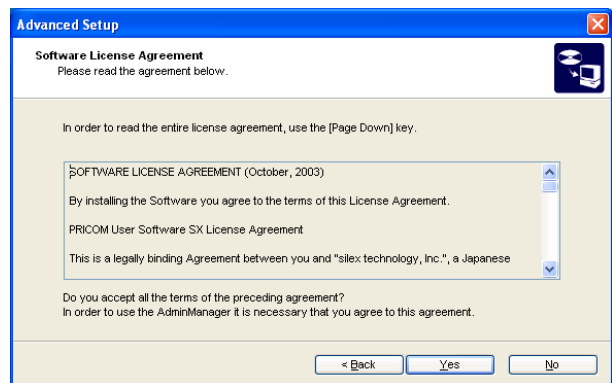
3. Select **Without installing....**, and click **Next**.



4. Click **Yes** if you agree to the software license agreement.



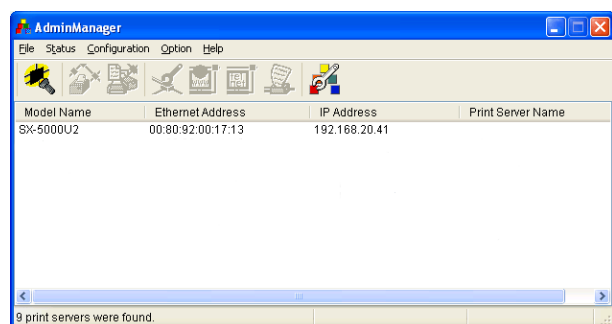
- If you do not agree to the software license agreement, you cannot use our products.



5. Select this product to be configured. Then on the AdminManager menu bar, select **Configuration**, then **Print Server Configuration**.



- If you cannot see this product in the search list, go to File and then select **Search**.



6. Configure the detailed settings of this product. Then click **Setup**.



NOTE

- Select **Factory Default** to reset the configuration of this product.
- Refer to the chapter appendix on setting information.

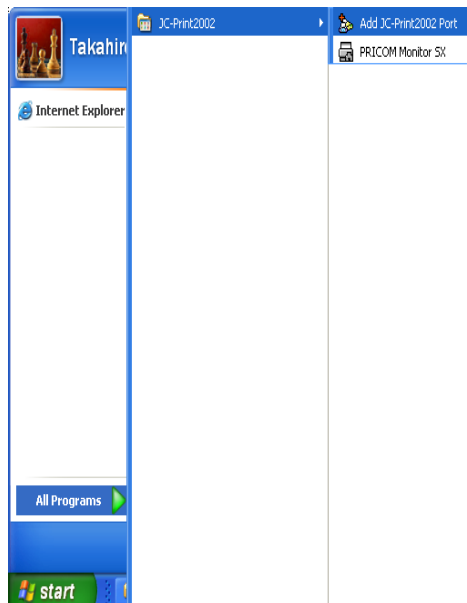
JC-Print2002

This section explains how to print using JC-Print 2002 in Windows 98/Me/2000/XP, and Windows Server 2003.



- This product must be connected to a network to create a JC-Print 2002 port.
- The printer driver should be installed prior to creating the JC-Print 2002 printer port.
- The following example is for Windows XP. Screens will vary depending on your OS.

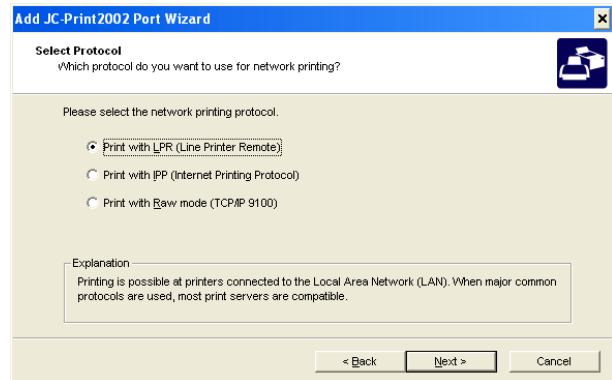
1. Click **Start - All programs - JC-Print 2002** then choose **Add JC-Print 2002 port**.



2. Click **Next**.



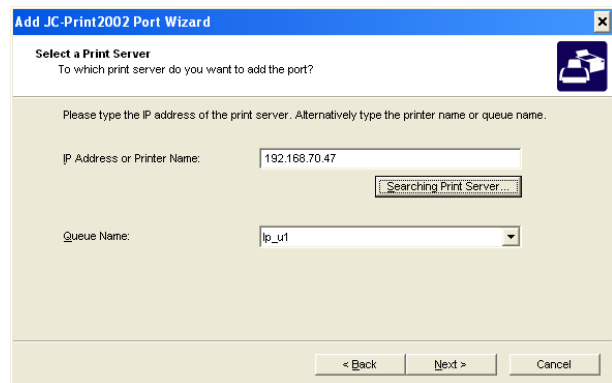
3. Select **Print with LPR(Line Printer Remote)**. Click **Next**.



4. Type in an IP address in the **IP address or Printer Name** box. And Select the Port name in the **Queue Name** box. Then click **Next**.



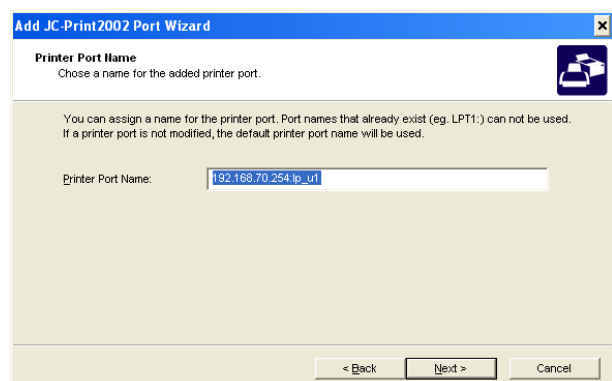
- Select **Searching Print Server** to display, a list of our products currently on the network. Select the one that you want to print to.



5. Type in a printer port name. Click **Next**.



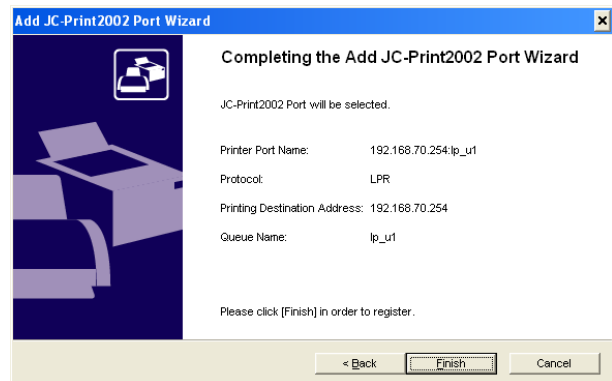
- Use the default printer port name (specified IP address and a queue name) If you do not want to create a specific name, then click **Next**.



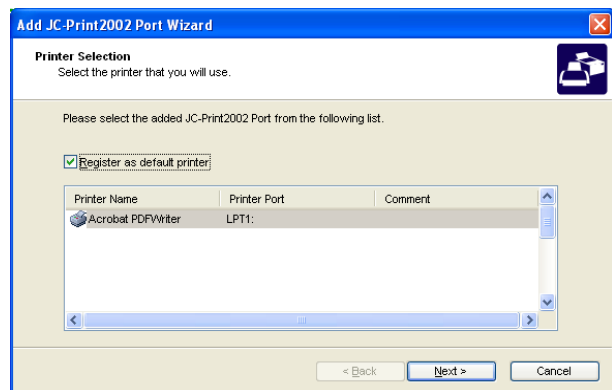
6. Verify the configuration. Click **Finish**.



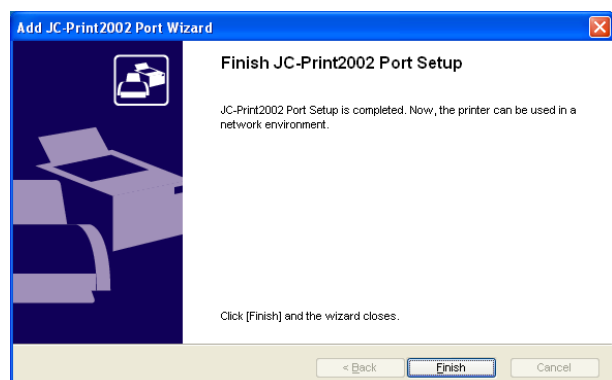
- If the configuration is not correct, click **Back** to correct the configuration.



7. Select the printer you want to use with this product. Click **Next**.



8. JC-Print 2002 Port set up is complete. Click **Finish**.



Setup Using a USB Storage Device

This product can be set up by creating a configuration file and storing the file on a USB storage device. The following instructions explain how to do this.

1. Connect a USB storage device into a USB port on the PC.
2. Create a configuration file using a text editor. The format is as follows:

File format

```
-----
silex
#-- TCP/IP Configuration -----
TCP/IP Protocol = 1
DHCP/BOOTP = 0
RARP = 0
IP Address = 192.168.100.200
Subnet Mask = 255.255.255.0
Default Gateway = 192.168.100.254
#-- NetBEUI/NetBIOS Configuration -----
NetBEUI Protocol = 1
NetBIOS over TCP = 1
Computer Name = PRxxxxxxx
WorkGroup = Pricom
Browse Master = 0
#-- AppleTalk Configuration -----
AppleTalk Protocol = 1
PORT1 Printer Name = PRxxxxxxx-usb1
PORT2 Printer Name = PRxxxxxxx-usb2
PORT3 Printer Name = PRxxxxxxx-usb3
PORT4 Printer Name = PRxxxxxxx-usb4
PORT1 PostScript Mode = 0
PORT2 PostScript Mode = 0
PORT3 PostScript Mode = 0
PORT4 PostScript Mode = 0
-----
```





NOTE

- The 1st line must be "silex", in order to distinguish it from other files with the same name.
- The editor must create a simple text(".txt")file. Microsoft Notepad is recommended.
- Use the "setting item name = setting value" format to configure each item. One item per line.

TCP/IP Configuration	
Variable name	Setting value
TCP/IP Protocol	0 ~ 1 [0 : DISABLE 1: ENABLE]
DHCP/BOOTP	0 ~ 1 [0 : DISABLE 1: ENABLE]
RARP	0 ~ 1 [0 : DISABLE 1: ENABLE]
IP Address	0.0.0.0 ~ 255.255.255.255
Subnet Mask	0.0.0.0 ~ 255.255.255.255
Default Gateway	0.0.0.0 ~ 255.255.255.255
NetBIO Configuration	
NetBEUI Protocol	0 ~ 1 [0 : DISABLE 1: ENABLE]
NetBIOS over TCP	0 ~ 1 [0 : DISABLE 1: ENABLE]
Computer Name	Arbitrary character sequences (a maximum of 15 characters)
WorkGroup	Arbitrary character sequences (a maximum of 15 characters)
Browse Master	0 ~ 1 [0 : DISABLE 1: ENABLE]
AppleTalk Configuration	
AppleTalk Protocol	0 ~ 1 [0 : DISABLE 1: ENABLE]
PORT1~4 Printer Name	Arbitrary character sequences (a maximum of 31 characters)
PORT1~4 PostScript Mode	0 ~ 2[0:ASCII 1:BCP 2:TBCP]

- Use of USB memory is restricted to the configuration settings listed in this section.
- While using USB memory do not use other configuration methods.

3. File name

If you create the configuration file using an editor, save as [config.txt] or cfgxxxxxx.txt. (xxxxxx is last 6 digits of the Ethernet Address for the PRICOM)

Example for saving the configure file

1. Save [config.txt].

2. If this product's Ethernet address is [00:80:92:34:c0:19], your file name is [cfg34c019.txt].



TIP

- When both a config.txt file and a cfgxxxxxx.txt file exist in USB memory, the second file that includes the Ethernet address will be the selected file.



NOTE

- If you have a lot of PRICOM on your network, you create several files using the [cfgxxxxxx.txt] format in an editor to save time.

4. Saved file

Save to file in the root directory of USB memory.

5. The configuration is saved on this product

(Configuration Procedure)

- 1) Verify that the product is powered off and then insert the USB memory, containing the configuration information, into a USB port (USB1 or USB2).
- 2) Power-up the PRICOM by connecting the AC adapter to the PRICOM.
- 3) Verify that the Power LED (orange) lights.
- 4) If the configuration is successful, all LEDs (included Power LED) will turned off and then all LEDs will light.
- 5) Remove the USB memory. Then connect the printer via USB cable.

5. UNIX/Linux Environment

This chapter will explain how to print using LPD and FTP in a UNIX/Linux environment. This chapter contains examples; please refer to the manual of the workstation for specific details. Before proceeding, perform the initial set up of this product using a Windows PC or a Macintosh.

Configuring Host File

Register host name and IP address to UNIX or Linux hosts file.



NOTE

- Make sure to contact network administrator when editing hosts file.
- Editing hosts file may not be required if using IP administration system like DNS.

1. Log in to UNIX/Linux machine by "root".

login root

2. Register PRICOM host name and IP address to /etc/hosts file.

To edit host file, use an editor, e.g. "vi".

Example: The IP address is "192.168.10.100", host name is "pbox"

192.168.10.98	venus	# UNIX-A
192.168.10.99	mars	# UNIX-B
192.168.10.100	pbox	# Print-Server

3. Switch on printer. Verify the network connection by using ping command.

ping pbox



TIP

- If there is no response or error is indicated, there may be problems with IP address configuration, host file editing or network status. Contact network administrator.

Printing by LPD

This section explains how to print using LPD protocol of TCP/IP.

For further information on “lpr” and “lp” commands, refer to your workstation manual.



NOTE

- LPD protocol:

LPD (Line Printer Daemon) is a protocol that enables you to execute printing to a printer on the network.

- Remote-Printer Queue

PRICOM has three remote printer queues.

To print files using a printer driver, use “lp”. For printing text files using shift-JIS KANJI code, use “sjis”. For printing text files using EUC KANJI code, use “euc”.

Connection port	Remote Printer	Function
USB1 port	lp_u1_lp	Direct output port
	lp_u1_sjis	Shift- JIS KANJI code
	lp_u1_euc	EUC KANJI code
USB2 port	lp_u2_lp	Direct output port
	lp_u2_sjis	Shift- JIS KANJI code
	lp_u2_euc	EUC KANJI code
USB3 port	lp_u3_lp	Direct output port
	lp_u3_sjis	Shift- JIS KANJI code
	lp_u3_euc	EUC KANJI code
USB4 port	lp_u4_lp	Direct output port
	lp_u4_sjis	Shift- JIS KANJI code
	lp_u4_euc	EUC KANJI code

Using PRICOM in Solaris Environment

Solaris 2.6/7/8

This section explains how to print from Solaris2.6/7/8.

The blow command and path instruction may vary depending on OS version. Refer to your workstation manual.



-Remote Printer can not be configured with PRICOM.

TIP

1. Create Printer Queue

1-1 Log in to UNIX machine by "root".

```
# login root
```

1-2 Register print server name.

Example: Register the print queue name by "pboxlp":

```
# lpadmin -p pboxlp -m netstandard -o protocol=bsd
```

```
-o dest=pbox:lp_u1 -v /dev/null
```



NOTE

- "lp_u1" after the ":" is the logical printer name when connecting to the USB1 port of this product and printing the file using the printer driver.

1-3 Enable print queue.

```
#/usr/sbin/accept pboxlp
```

```
#/usr/bin/enable pboxlp
```

2. Printing

2-1 This section explains how to print using [lp] command. For more details, refer to Solaris manual.

```
# lp -d pboxlp <Name of print file>
```

This causes the banner page to be automatically printed.

To disable the banner printing feature, add the following option, “-o nobanner”.

```
# lp -d pboxlp -o nobannert <Name of print file>
```

Alternatively, type,

```
# lpadmin -p pboxlp -o nobanner
```

directly edit the filter file generated under /etc/lp/interfaces.

Either of these options disables banner print function.

Example: Using an editor e.g. vi, open the file shown below. Change “nobanner=no” to “nobanner=yes”.

```
# vi /etc/lp/interfaces/pboxlp
nobanner=no ---> nobanner=yes
```

3. Cancel the print request.

3-1 Use “cancel” command to cancel the current print job request.



-Depending on the timing or Solaris specification, canceling attempt will fail.

4. Check the printer status

4-1 Use “lpstat” to verify the printer status.

```
# lpstat -p pboxlp
```



-Depending on the UNIX specification, the command will fail to correctly display the printer

Solaris 2.3x-2.5x

This section explains how to print from Solaris 2.5 or below.

Command absolute path and configuration method may vary depending on OS version. Refer to your workstation manual for more details.



-Remoter printer can not be used with PRICOM.

TIP

1. Prepare the print queue.

1-1 Log in to the UNIX machine by "root".

```
# login root
```

1-2 Cancel the print scheduler.

```
# /usr/sbin/lpshut
```

1-3 Register the print server.

Example: Register the host name "pbox":

```
# /usr/sbin/lpsystem -R0 -t bsd pbox
```

1-4 Configure the print queue.

Example: Register the print queue name "pboxlp":

```
#/usr/sbin/lpadmin -p pboxlp -s pbox!lp_u1
```



NOTE

- When using csh, replace " /! " with " ! ".

"lp_u1" after the "!" is the logical printer name when connecting to the USB1 port of this product and printing the file using the printer driver.

1-5 Activate the print scheduler.

```
#/usr/bin/sh /etc/init.d/lp start
```

1-6 Enable the print queue.

```
#/usr/sbin/accept pboxlp
```

```
#/usr/bin/enable pboxlp
```

2. Printing.

2-1 Print using "lp" command.

```
# lp -d pboxlp <Print file name>
```

3. Cancel the print request.

3-1 Use the "cancel" command to cancel the current print job request.

```
# cancel pboxlp- <Name of print file>
```

4. Check the printer status.

4-1 Use the "lpstat" to verify the printer status.

```
# lpstat -p pboxlp
```



TIP

-Depending on the UNIX specification, the command will fail to correctly display the printer status.



TIP

- [Limits]

When running PRICOM with Solaris 2.x, following limits occurs due to Solaris specifications.

- 1) If, after starting printing, the printer becomes off line and cannot receive data for quite a while, timeout occurs on the Solaris side and then the printing continues (re-connection). This means that the data stream to the printer is discontinued, and the first page will be sent again.
- 2) When the printer status is displayed in the form "lpstat -p<printer name>", optional character string returned to show the status (e.g. PrinterReady) cannot be interpreted by the Solaris. As a result, "Faulted" is displayed followed by unintentional characters.
- 3) When a print-related command is sent to PRICOM while the Solaris is sending data from the same machine, the command cannot function as it should. This is because Solaris cannot output another packet until it finishes the transmission of the current data. Thus, "system not responding" will be displayed in response to "lpstat -p <printer name>".
- 4) Certain commands such as lpstat following cancel command will result in error. In such case, printer scheduler daemon may not be running, so verify using "lpstat -r". If "scheduler is not running" is displayed, reboot the printer scheduler daemon by typing in as below.
/bin/sh /etc/init.d/lp start
- 5) Even if "cancel" is used to delete a job that does not exist, no error occurs with Solaris.

Using PRICOM in HP-UX 9.x/10.x Environment

This section explains how to print from Hewlett-Packard HP-UX.

Command absolute path and configuration method may vary depending on OS version. Refer to your workstation manual for more details.

1. Set the remote spooler.

When HP-UX machine is not configured to remote spooler, follow with the below configuration.

1-1 Log in to the UNIX machine by "root".

```
# login root
```

1-2 Cancel the printer spooler.

```
#/usr/lib/lpshut
```

1-3 Register remote spooler by adding the line shown below to /etc/inetd.conf file.

```
printer stream tcp nowait root /usr/lib/rldpdaemon -i
```

1-4 Reboot inetd.

```
#/etc/inetd -c
```

2. Prepare the print queue.

2-1 Log in to the UNIX machine through "root".

```
# login root
```

2-2 Configure print queue.

Example: Register the print queue name as "pboxlp":

```
#/usr/lib/lpadmin -ppboxlp -mrmodel -ormpbox  
-orlp_u1 -ocmrcmodel -osmrsmodel -ob3 -v/dev/null
```



NOTE

- "lp_u1" after the "orp" is the logical printer name when connecting to the USB1 port of this product and printing the file using the printer driver

2-3 Enable the print queue.

```
#/usr/lib/accept pboxlp
```

```
#/usr/bin/enable pboxlp
```

2-4 Boot the printer spooler.

```
#/usr/lib/lpsched
```

3. Prepare for printing.

3-1 Use the print command "lp".

```
# lp -d pboxlp <Name of print file>
```

4. Cancel the print request.

4-1 Use the "cancel" command to cancel the current print job request.

```
# cancel pboxlp- <job number>
```

5. Check the printer status

5-1 Use the "lpstat" to verify the printer status.

```
# lpstat -p pboxlp
```



TIP

-Depending on UNIX specification, the command may fail to display the printer status correctly.

Using setnetlp Tool



TIP

-setnetlp utility is available for HP-UX, ver. 10.10 or below.

Example:

IP address: 192.168.10.100

Host name: pbox

These are already registered to /etc/hosts and to be registered by "pboxlp" as a queue name.

1. Log in by root and execute /usr/sbin/setnetlp. Below menu will be displayed.
Select [1) Add Printer]

```
# /usr/sbin/setnetlp

#####
#                MAIN MENU                #
# Network Printer Configuration            #
#####

1) Add Printer
2) Remove Printer

q) Quit

Please enter a selection: 1
```

2. The below menu will be displayed. Select [1) LP destination name:]

```
Please enter a selection: 1

Configurable Parameters:          Current Settings
-----
0) Done. Make Configuration now!
1) Lp destination name:          [(N/A)]
2) Remote System name:          [(N/A)]
3) Remote Printer name:         [(N/A)]
4) Local Model Script:          [(N/A)]

q) Quit

Select an item for change or select "0":1
```

3. Registered printer list will be displayed. Type in printer name to be configured following [Please enter a lp destination name:].

Currently used names:

pbox1lp pbox3lp

Please enter a lp destination name: pboxlp

4. Select [2) Remote System name]. Type in the IP address configured to PRICOM, or the host name registered to /etc/hosts after [Please enter a remote system name/ IP address:].

Host name is typed for this example.

Select an item for change or select "0":2

Please enter a remote system name/IP address: pbox

5. Select [Remote Printer name]. Type in [lp_u1] following [Please enter a remote printer name:].

Select an item for change or select "0":3

Please enter a remote printer name: lp_u1

6. Select [4) Local Model Script]. Model file list and prompt will be displayed. Type in model file name to be configured following [Please enter a model file:]. [PS.nlio] that is generally used by Japanese postscript is used for this example.

```
Select an item for change or select "0":4
Valid Models:
-----
ESCP          colorpro      hp2228a      hp2934a      laserjet4
HPGL1         deskjet       hp2235a      hp33440a     laserjet4Si
HPGL2         deskjet1200C  hp2276a      hp33447a     laserjet4v
HPGL2.cent    deskjet1600CM hp2300-1100L hp3630a      laserjet5Si
LIPS3         deskjet500    hp2300-840L  hp5000c30    laserjetIIISi
LIPS4         deskjet500C   hp2560       hp5000f100   paintjet
PCL1          deskjet550C   hp2563a      hp7440a      paintjetXL300
PCL2          deskjet850C   hp2564b      hp7475a      postscript
PCL3          deskjet855C   hp2565a      hp7550a      print_model.sh
PCL4          draftpro      hp2566b      hp7570a      quietjet
PCL4.nloo     dumb          hp2567b      hp7595a      rmodel
PCL5          dumbplot     hp256x.cent  hp7596a      rmodel.asx
PCL5.asian    fonts        hp2631g      hpC1208a     ruggedwriter
PCL5.nloo     hp2225a      hp2684a      hpc1200aj    sharedprint
PS.nlio       hp2225d      hp2686a      hpc1208a     thinkjet
colorlaserjet hp2227a      hp2932a      laserjet

Please enter a model file: PS.nlio
```



- Select "LIPS4 (LIPS3)" when using Canon LBP series.
- Select "ESCP" when using Epson LP series.

NOTE

7. When everything is complete, the below to be displayed. Select [0) Done. Make configuration now!:] if there is nothing you want to change.

```
Configurable Parameters:      Current Settings
-----
0) Done. Make Configuration now!
1) Lp destination name:      [pboxlp]
2) Remote System name:      [pbox]
3) Remote Printer name:     [lp_u1]
4) Local Model Script:      [PS.nlio]

q) Quit

Select an item for change or select "0":0
```

8. Make sure that the machine is not performing printing sequence, and then type in "y".

```
Select an item for change or select "0":0

WARNING: This operation requires lp spooler be shut down.
The spooler will be running again after this operation is done.
If there are jobs currently being printed, those are reprinted in
their entirety after spooler is started again.

OK to continue? (y/n, default-n): y
```

9. This completes the printer addition procedure. Press [Return] key.

```
Printer, pboxlp, has been added.
Press the return-key to return to configuration menu...
```

10. The display returns to registration confirmation screen.

Enter "q" twice to quit the setnetlp tool.

Configurable Parameters: -----	Current Settings -----
0) Done. Make Configuration now!	
1) Lp destination name:	[pboxlp]
2) Remote System name:	[pbox]
3) Remote Printer name:	[lp_u1]
4) Local Model Script:	[PS.nlio]
q) Quit	

```
Select an item for change or select "0": q
```

11. Execute test print to verify the proper printing operation.

Example: Printing Japanese text file

To print Japanese text file, the following options are required. (For further information, refer to HP-UX manual.)

Character code	lp option
Shift JIS	japanese
Japanese EUC	japanese.euc

11-1 Shift JIS text test print

Command examples for test print is shown below.

#lp -d pboxlp -ojapanese "en quad" location of the text

11-2 Japanese text test print

Command example for test print is shown below.

#lp -d pboxlp -ojapanese.euc "en quad" location of the text



NOTE

- To delete printer registered, the below command should be typed.

#/usr/sbin/setnetlp -x <destination>

<destination> is a registered printer name.

Using PRICOM in AIX 4.x.x Environment

This section explains how to print from IBM AIX.

Command absolute path and setting method may vary depending on OS version. Refer to your workstation manual for more details.

1. Prepare the print queue.

1-1 Log in to the UNIX machine through "root".

```
# login root
```

1-2 Add a print server.

Example: To add a host named "pbox".

```
# ruser -a -p pbox
```

1-3 Start the remote printer daemon.

```
# startsrc -s lpd
```

```
# mkitab 'lpd:2:once:startsrc -s lpd'
```

1-4 Add a print queue by using smit command:

1-4-1 Once the command starts, shift to the option "Add printing queue".

```
# smit mkrque
```

1-4-2 Among "Connection types", select "remote"(a printer connected to a remote host).

1-4-3 Select "Standard processing" among "remote printing type".

1-4-4 Under "Add a standard remote queue", configure the following items.

In addition, modify other options to match the conditions of the operating environment.

Example: To register the print queue under the name "pboxlp".

Queue to be registered [pboxlp]

Host name of the remote server [pbox]

Name of the queue on the remote server [lp_u1]

Type of print spooler on the remote server [BSD]

Printer name description on the remote server [any comment]



NOTE

"lp_u1" is the logical printer name when connecting to the USB1 port of this product and printing the file using the printer driver.

2. Printing

2-1 Print using command "lp".

lp -d pboxlp <print file name>

3. Cancel the print request.

3-1 Use the "cancel" command to cancel the current print job request.

cancel pboxlp- <job number>

4. Check the printer status.

4-1 Use the "lpstat" to verify the printer status.



TIP

-Depending on UNIX specification, the command may fail to display the printer status correctly.

Using PRICOM in BSD UNIX Environment

This section explains how to print from BSD UNIX.

Command absolute path and setting method may vary depending on OS version. Refer to your workstation manual for more details.

1. Prepare the print queue.

1-1 Log in to the UNIX machine by "root".

```
# login root
```

1-2 Register the PRICOM to /etc/printcap file.

Example: To register a print queue by the name "pboxlp".

```
pboxlp:\                ----(1)
:lp=:rm=pbox:rp=lp_u1:\  ---(2)
:sd=/usr/spool/pboxlp:\  ---(3)
:lf=/usr/spool/pboxlp/pboxlp_errs:  ---(4)
```



NOTE

- "lp_u1" is the logical printer name when connecting to the USB1 port of this product and printing the file using the printer driver.

<Description of parameters>

- (1) Describes the printer name.
- (2) lp: Device file name to connect printer.
No name designation required on the network.
rm: remote printer host name.
Type the host name registered to /etc/hosts file.
rp: Remote printer name.
PRICOM remote printer name; select logical printer name.
- (3) sd: Spool directory name. Must be the absolute path.
- (4) lf: Error log file name. Must be the absolute path.

1-3 Create the spool directory and error log file registered to /etc/printcap file.

Example: To create the spool directory "pboxlp" and error log file "pboxlp_errs".

# mkdir /usr/spool/pboxlp	Create the spool directory
# touch /usr/spool/pboxlp/pboxlp_errs	Create the error log file
# chown -R daemon /usr/spool/pboxlp	Change the owner to daemon
# chgrp -R daemon /usr/spool/pboxlp	Change the group to daemon

1-4 Check whether the lpd (printer daemon) is activated.

```
# ps aux \ grap lpd
```

If lpd is not working, run the following command using a super user account.

```
# /usr/lib/lpd&
```

1-5 Enable the print queue configured.

```
# lpc restart pboxlp
```

2. Start printing.

2-1 Use the “lpr” command.

```
# lpr -P pboxlp <print file name>
```

3. Cancel the print request.

3-1 The print job request can be cancelled by using “lprm” command.

```
# lprm -Ppboxlp <job number>
```

4. Check the printer status.

4-1 The printer status can be checked by using “lpq” command.



-Certain UNIX specifications fail to display the status correctly.

-lpq short format is UNIX compatible but the long format is specific to PRICOM to display the printer status.

Example: In case of short format

```
# lpd -P pboxlp
```

Example: In case of long format

```
# lpd -l -P pboxlp
```

Using PRICOM in Linux Environment

This section explains how to print from Linux.

Command absolute path and setting method may vary depending on OS version. Refer to your workstation manual for more details.



NOTE

-For print queue creating tool of Red Hat Linux and Turbo Linux, refer to "Using Red Hat Linux print queue creating tool" and "Using Turbo Linux print queue creating tool", respectively.

1. Prepare the print queue.

1-1 Log in to the Linux machine through "root".

```
# login root
```

1-2 Register the PRICOM to /etc/printcap file.

Example: To register a print queue by the name "pboxlp".

```
pboxlp:\                                ---(1)
      :lp=:rm=pbox:rp=lp_u1:\          ---(2)
      :sd=/usr/spool/pboxlp:\          ---(3)
      :lf=/usr/spool/pboxlp/pboxlp_errs: ---(4)
```



NOTE

- "lp_u1" is the logical printer name when connecting to the USB1 port of this product and printing the file using the printer driver.

<Description of parameters>

(1) Describes the printer name.

(2) lp: Device file name to connect printer.

No name designation required on the network.

rm: Host name for the remote printer

Type the host name registered to /etc/hosts file.

rp: Remote printer name.

PRICOM remote printer name; select logical printer name.

(3) sd: Spool directory name. Must be the absolute path.

(4) lf: Error log file name. Must be the absolute path.

1-3 Create the spool directory and error log file registered to /etc/printcap file.

Example: To create the spool directory "pboxlp" and error log file "pboxlp_errs".

```
# mkdir /usr/spool/pboxlp              Create the spool directory
# touch /usr/spool/pboxlp/pboxlp_errs  Create the error log file
# chown -R daemon /usr/spool/pboxlp    Change the owner to daemon
# chgrp -R daemon /usr/spool/pboxlp    Change the group to daemon
```

1-4 Check whether the lpd (printer daemon) is activated.

```
# ps aux / grep lpd
```

If lpd is not working, run the following command using a super user account.

```
# /usr/lib/lpd&
```

1-5 Enable the print queue configured.

```
# lpc restart pboxlp
```

2. Start printing.

2-1 Use the "lpr" command.

```
# lpr -P pboxlp <print file name>
```

3. Cancel the print request.

3-1 The print job request can be cancelled by using "lprm" command.

```
# lprm -Ppboxlp <job number>
```

4. Check the printer status.

4-1 The printer status can be checked by using "lpq" command.

Certain Linux specifications fail to display the status correctly.

Short format of lpq is UNIX compatible but the long format to show the printer state is a specific to the PRICOM.

Example: In short format

```
# lpq -P pboxlp
```

Example: In long format

```
# lpq -l -P pboxlp
```

Using Print Queue Creation Tool of Red Hat Linux



-This section explains how to print using print queue creation utility of Red Hat Linux 7.1.

Note that some steps may vary depending on Red Hat Linux version.

Example: IP address "192.168.10.100" and Host name "pbox" are registered to etc/hosts file and print queue is to be registered by the name "pboxlp".

"lp_u1" is the logical printer name when connecting to the USB1 port of this product and printing the file using the printer driver.

1. Select **Main menu**, then **Programs**, then **System**, then **Setting printer**.
2. Click **New** in the [printconf.gui] screen.
3. Click **Name and alias**, then type **pboxlp** in **Printer name**, then click **Add**.
4. Type **pboxlp** in **Alias**, then click **OK**.
5. Click **Printer type**, then select **LPD**. Type **pbox** in the server and **lp_u1** in the printer.
6. Select **Printer driver** and **Printer option** that correspond with your operating environment.
7. After configuration is complete, click **OK** in [Printer edit].
8. Verify that the printer created is displayed and selected in the [printconf.gui]. Click **Apply**.
9. Verify the dialog message, "lpd has been successfully rebooted", then Click **OK**.
10. Click **Test** in [printconf.gui] screen. When you get test page, the configuration is complete.

Using the Print Queue Creation Tool of Turbo Linux



-This section explains how to print using print queue creation utility of Turbo Linux6.0.
TIP Note that some steps may vary depending on Turbo Linux version.

Example: IP address "192.168.10.100" and Host name "pbox" are registered to etc/hosts file and print queue is to be registered by the name "pboxlp".
 "lp_u1" is the logical queue name when connecting to the USB1 port of this product and printing the file using the printer driver.

1. Select **Main menu**, then **Turbo Linux tool**, then **Turbo Centro**.
2. Click **Turboprintcfg** in the **Turbo Centro-GT**.
3. Click **Add** in **Setting printer screen**.
 - 3-1 Select **Remote LPD queue** in **Add printer**.
 - 3-2 Type **pboxlp** in **New queue name**.
 - 3-3 Click **Change** in **LPD configuration** of **Change printer configuration**.
 - 3-3-1 Type "pbox" in Host name.
 - 3-3-2 Type "lp_u1" in Queue name.
 - 3-4 Click **Change** in Printer type, then select the printer driver that corresponds with your operating environment.
 - 3-5 Select **Paper size** and **Color depth** that correspond with your operating environment.
4. Click **OK** in the [Printer configuration].
5. Click **Save and Finish** to complete the configuration.

Printing Using FTP

This section explains how to print using FTP of TCP/IP.

For further information on “ftp” command, refer to your workstation manual.



- About FTP

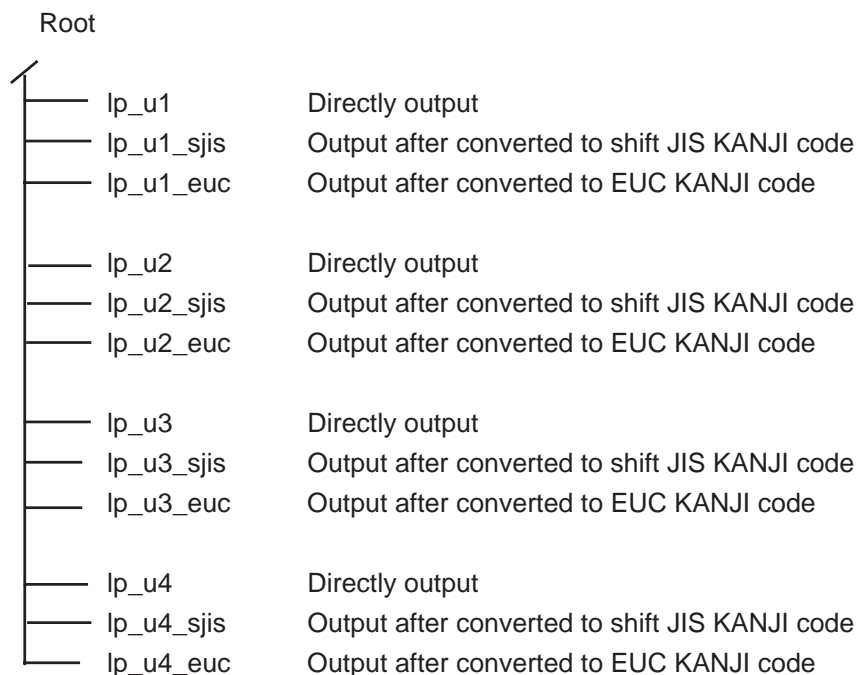
FTP (File Transfer Protocol) is a protocol used to transfer a file by TCP/IP. By transferring data to PRICOM logical directory, printing can be executed.

NOTE

- Logical directory

PRICOM has three remote printer queues. To print files using a printer driver, use “lp”. For printing text files using shift-JIS KANJI code, use “sjis”. For printing text files using EUC KANJI code, use “euc”.

<PRICOM logical directory structure>



Printing

1. Log in to PRICOM.



-When printing using “ftp” command, any input to “User” and “Password” will not disturb printing job unless “root” is used in “User”. When the “User” name is “root”, type the password configured in environment settings.

Example: To log in to a printer whose host name is “pbox”
(or to log in to a printer having IP address “192.168.10.100”).

```
#ftp pbox (or ftp 192.168.10.100 )
Connected to pbox
220 PRICOM SX-5000U2 Ver 1.0.0 FTP Server.
User(silex:root): root
331 Password required.
Password:
230 User Logged in.
ftp>
```

2. Using “cd” command to move to destination directory.



-PRICOM has hierarchical structure for destination directory. Print data to the root directory is processed as output to “lp”.

Example: To move to lp directory and verify the current directory.

```
ftp>cd /lp_u1
250 Command Ok.
ftp>pwd
257 "/lp_u1" is current directory.
ftp>
```

3. Changing transfer mode.



NOTE

-There are two kinds for transfer mode. One is "ASCII" mode converts LF code to CR+LF code, the other is "BINARY" mode transfers file contents. To transfer binary-converted file from the printer driver, configure the transfer mode to "BINARY" (otherwise, ASCII mode is used).

Example: To change transfer mode to BINARY and verify the current mode.

```
ftp>type binary
200 Type set to I.
ftp>type
Using binary mode to transfer files.
ftp>
```

4. Transfer the print data to PRICOM using "put" command in file form.

There are two formats for transferring a file using "put" command.

Example: To transfer print data "test.prn".

```
ftp>put test.prn
```

To transfer print data to the directory specified by "/users/test/test.prn".

```
ftp>put /users/test/test.prn /lp
```



NOTE

-When printing data by specifying the directory, specify the destination logical directory. Not necessary to move directory using the cd command.

5. Use "quit" command to log out from PRICOM.

```
ftp>quit
```

Checking the status



NOTE

-By using "stat" of "quote" command, IP address, use name for log in and transfer mode can be verified.

-By specifying the directory (lp_u1, lp_u1_sjis, lp_u1_euc, etc.) following "stat", the printer status can be checked.

Example: To display the Ethernet board status.

```
ftp>quote stat
211-FTP server status:
Connected to: 192,168,10,100
User logged in: guest
Transfer type: BINARY
Data connection:Closed.
211 End of status.
ftp>
```

To display the printer status (directory name: lp_u1).

```
ftp>quote stat /lp_u1
211-FTP directory status:
Ready
211 End of status.
ftp>
```

6. Macintosh Environment

This section explains how to make a detailed setup and change settings for this product using AdminManager. This product must be setup prior to printing in a Macintosh environment.



- This product supports printing from a Macintosh/Power Macintosh series PC.

- 1) Mac OS 8.6 or newer is required. For Mac OSX, it must be 10.2 or newer.
- 2) AppleTalk Phase1 is not supported.

Setup and Printing

This section explains how to use setup and AppleTalk.

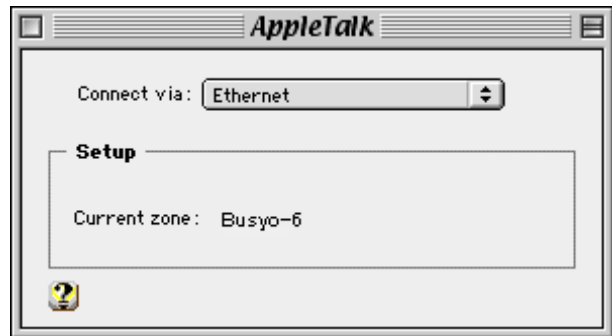


- The setup method may be different depending on the Macintosh used. For details, please refer to the Macintosh manual.

Mac OS 8/9

Setup AppleTalk service

1. Click **Apple menu - Control panel** - then choose **AppleTalk** and select **Ethernet**.



2. If a dialog is closed, the renewal screen of the setup will be displayed. Click **preservation**.



Printing

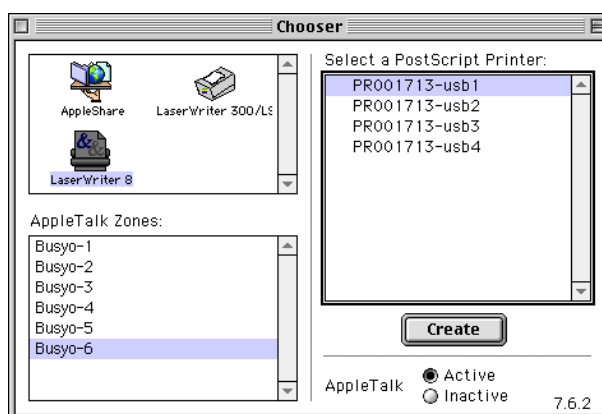


TIP

- The printer must support postscript printing in order to print from a Macintosh.

1. From Apple menu select **Chooser**.

2. Select the driver of the printer connected this product and (if there is a zone) choose the zone name to which this product belongs. This product will be displayed.

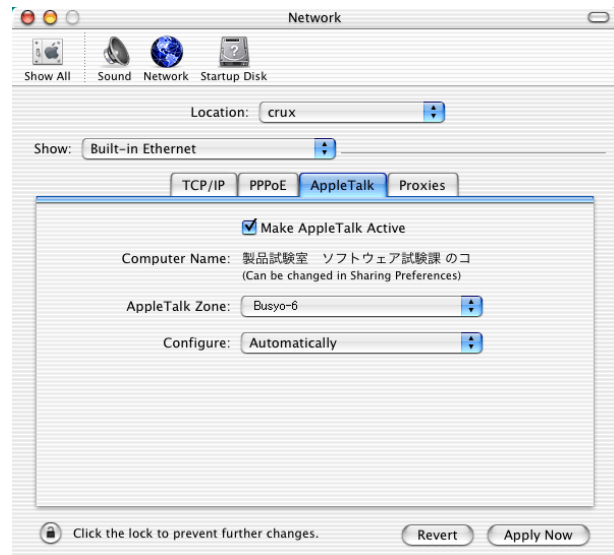


3. The Printing setup is complete. Verify it works correctly by sending a test document (for example from Apple Text).

Mac OS X

Enable the Apple Talk Service

Click **Apple menu - System environmental setup** - then choose **Network**, check the **Apple Talk** tab to use **Apple Talk**, and then click **Apply Now**.



Printing

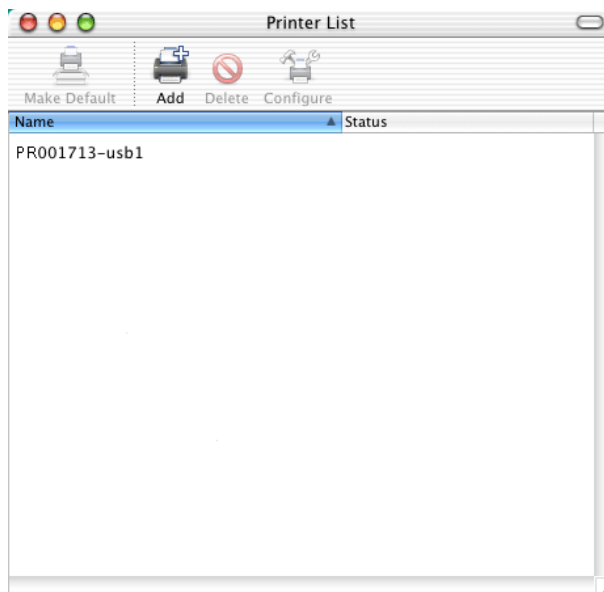


- The printer must support postscript printing in order to print from a Macintosh.

1. Click **Finder - Application - Utilities - Print Center** - then choose printer list and select the printer connected to this product.



- If the printer connected to this product is not displayed, click **adding a printer** and add the printer. Reference the printer manual for more information.



The Printing setup is complete. Verify it works correctly by sending a test document (for example from Apple Text).

Setup the TCP/IP (MacTCP) Protocol

In order to set up this product, it is necessary to setup from the attached CD. This section explains how to make a detailed setup.

Configure the TCP/IP(Mac TCP) Protocol

In order to set up this product, it is necessary to have TCP/IP (MacTCP) available to use on the Macintosh.



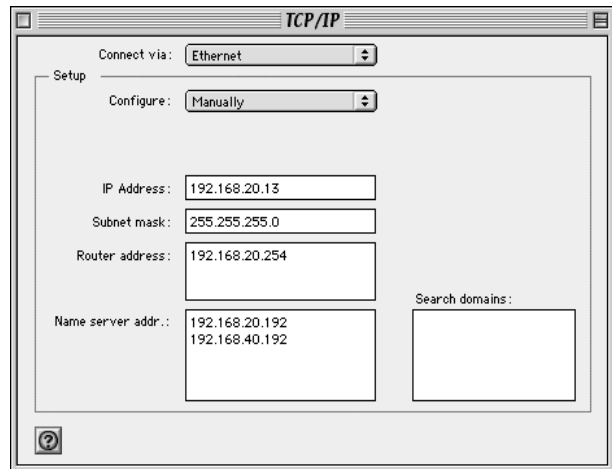
- The following example is for Mac OS 8/9, the screens for Mac OS X, will differ.

1. Click **Apple menu -Control panel -** and choose **TCP/IP(MacTCP)**.

2. Configure the IP address of the MAC by changing the setting method to a manual setup and input an address for each item.



- If acquiring an address from a DHCP server, select the setting method, use a DHCP server.



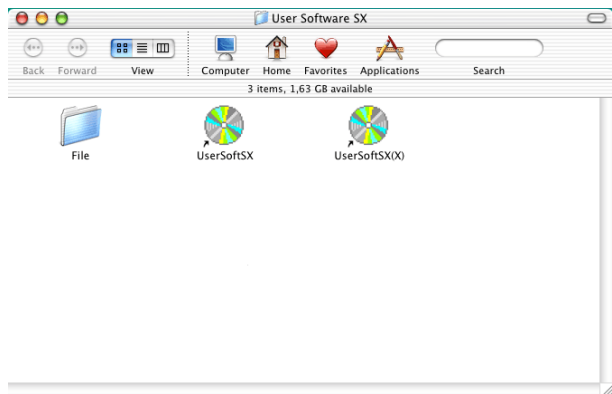
Installing and Using AdminManager

AdminManager (Macintosh) is used for setup of this product in a Macintosh environment.



- OpenTransport J-1.1.2 or newer is required. If OpenTransport J-1.1.2 is not installed please download it from the Apple webpage and install.
- Since AdminManager (Macintosh) uses the TCP/IP protocol, TCP/IP (MacTCP) must be installed.

1. Insert the UserSoftware SX CD into the CD-ROM drive of the Macintosh. "User Software SX" will open on the desktop.



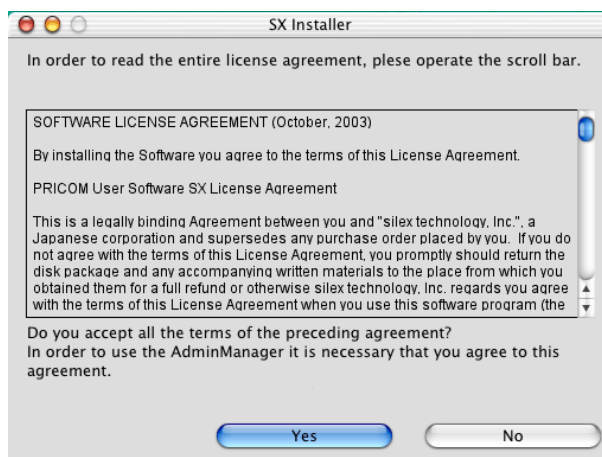
2. Click **Setup** from the menu screen.



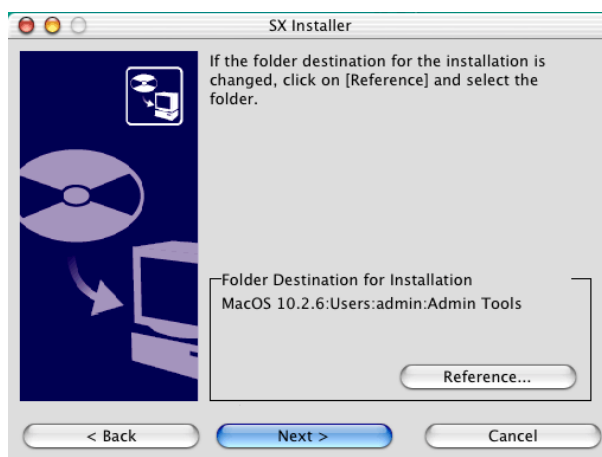
- Click **Yes**, if you agree to the license agreement.



- If you do not agree to the license agreement you cannot use our products.



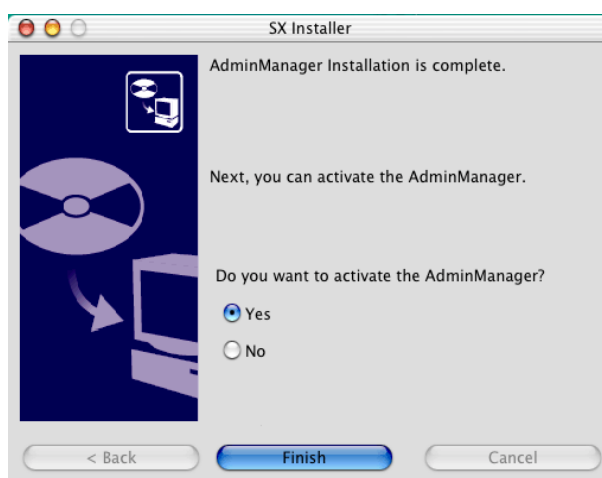
- Verify the installation destination and click **Next**.



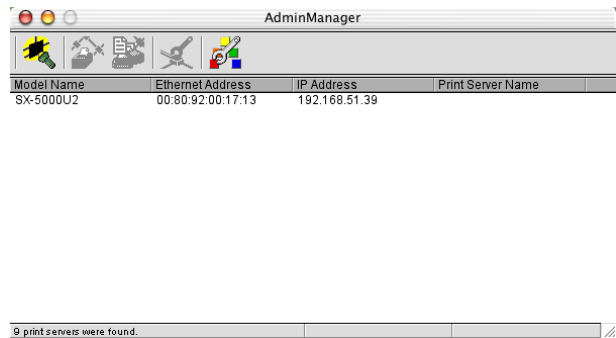
- Select **Yes** then click **Finish**.



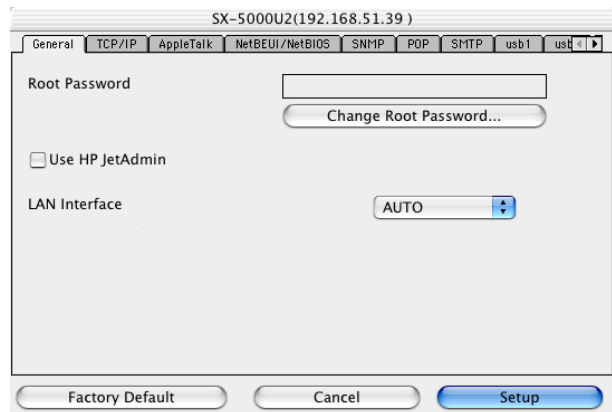
- Installation of AdminManager can be completed by putting a check into the NO box.



6. From the reference result list of AdminManager, choose the desired server and click the **setting** button.



7. Configure each item of this product from the configuration screens of Admin Manager.



NOTE

- Refer to Chapter Appendix about the configuration items in AdminManager.

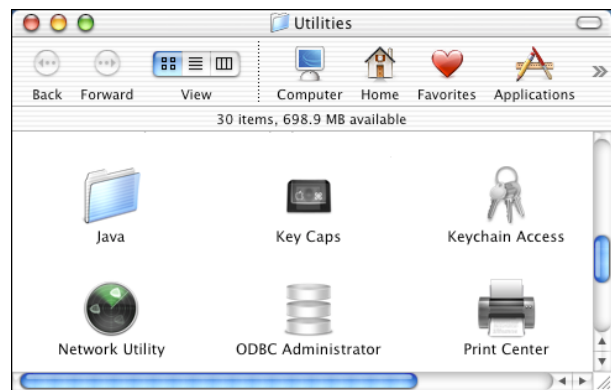
Printing Using Rendezvous

It is possible to print from a Macintosh using Rendezvous. Rendezvous is supported in MacOS X Ver10.2.3 and newer.

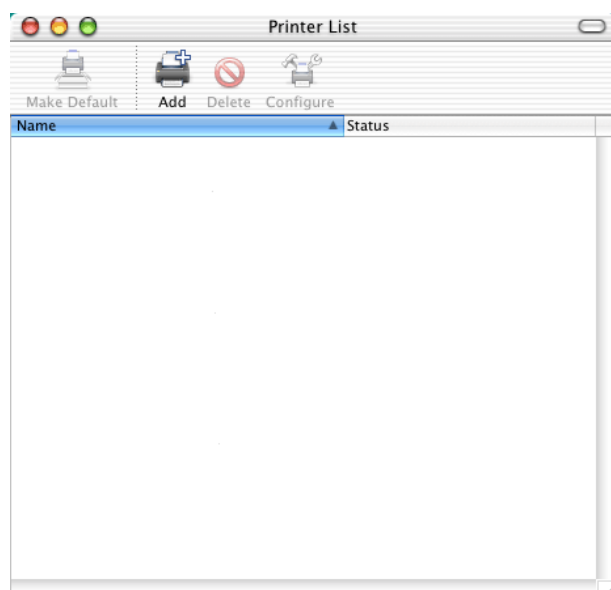


-In order to print from a MAC, the printer must support postscript printing.

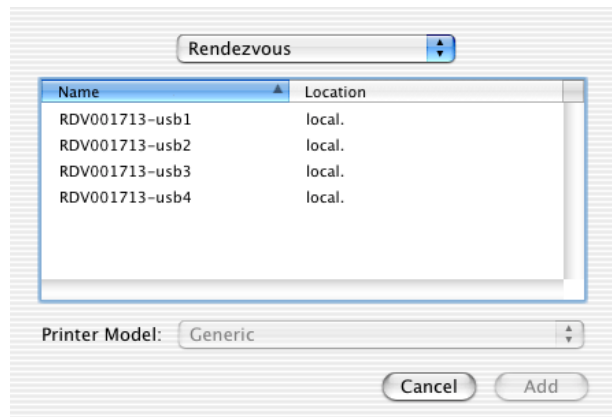
1. From **HDD** of the Macintosh, select - **Utility** - and then select **Print Center**.



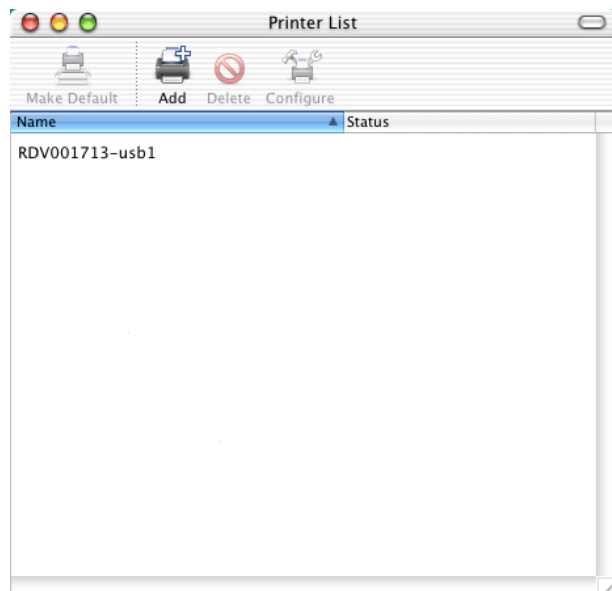
2. Click **Add**.



3. Change the protocol to Rendezvous.
After a while, a port list with this product will be displayed.



4. Choose the port with the printer connected to this product to complete the printing setup.



The printing setup is complete. Verify it works correctly by sending a test document (for example from Apple Text).

7. Scanner Server Function

This chapter explains how to use the scanner server function of this product the scanner server function enables a USB scanner connected to this product to be shared as a network scanner.



- The scanner server function is available in Windows2000, WindowsXP, and Windows Server 2003.



- Refer to Chapter **4. Setting up this Product** for information on how to setup this product using TCP/IP.

Initial Setup

Connect this Product to the Network and the USB Scanner

Connect this product to the network and the USB scanner.



- Do not disconnect the network cable or the USB cable while scanning.



- This product can connect 1 USB scanner only.
- Although it is not necessary to turn OFF the power when connecting/disconnecting a USB device, care should be taken when doing so.
- This product uses a Type A USB port. The USB scanner should have a Type B USB port.

<USB Connector>

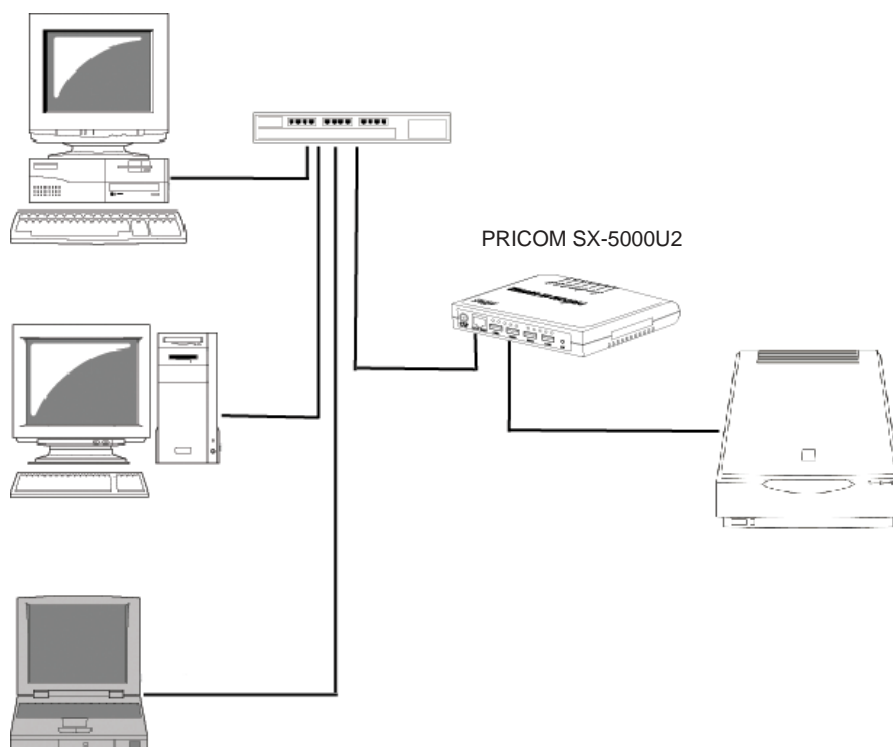


A Type



B Type

- Connect the USB scanner directly to the USB port of this product via a USB cable.



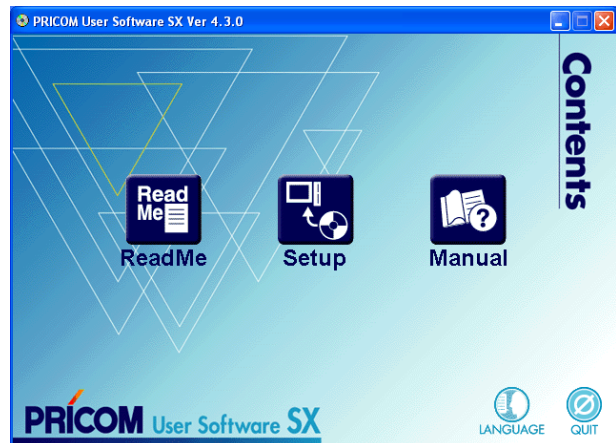
Install the PRICOM USB Utility

Start the PRICOM USB Utility, and configure it for using a USB scanner as a network scanner.

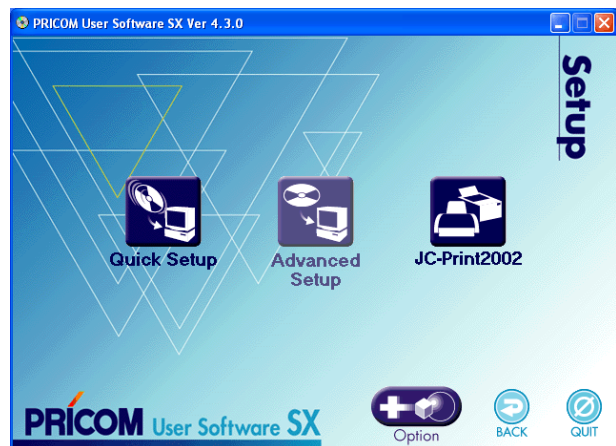
1. Load the bundled CD into your PC, then select **Setup**.



- If the screen does not appear automatically, open My Computer, select the CD-ROM drive and execute "AUTORUN.EXE".



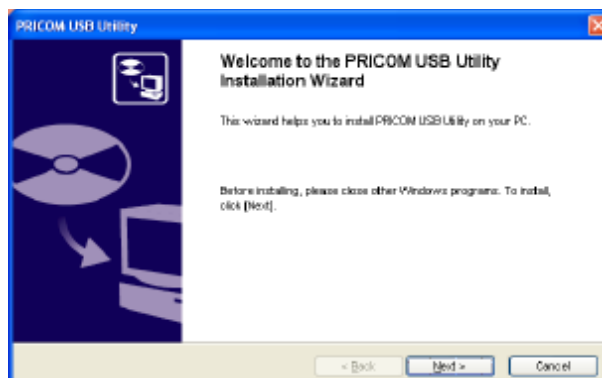
2. Click **Option**.



3. Select **PRICOM USB Utility**.



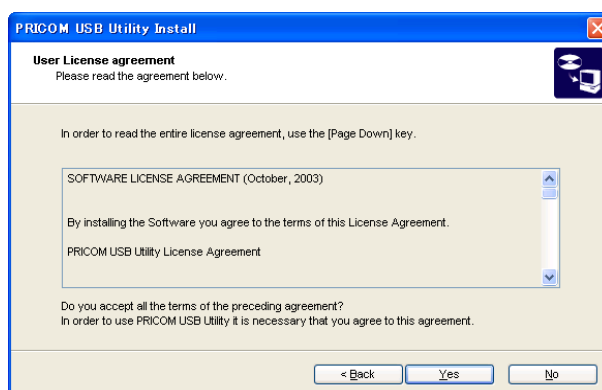
4. Click **Next** to begin the installation.



5. Click **Yes**, if you agree to the software license agreement.



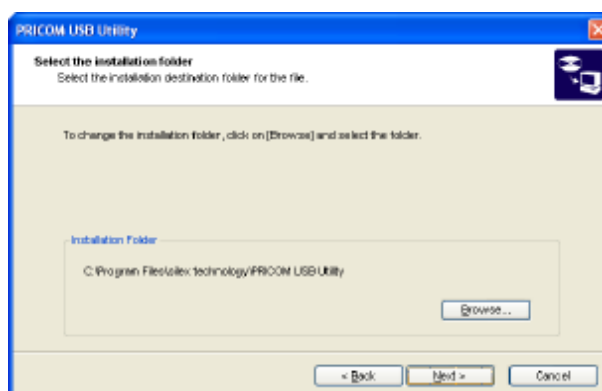
- If you do not agree to the software license agreement you cannot use our products.



6. Verify the installation destination folder and click **Next**.



- You can select the folder you want to install by clicking reference.

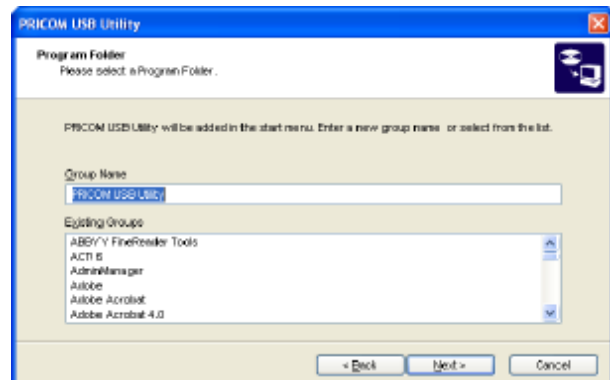


7. Click **Next**.

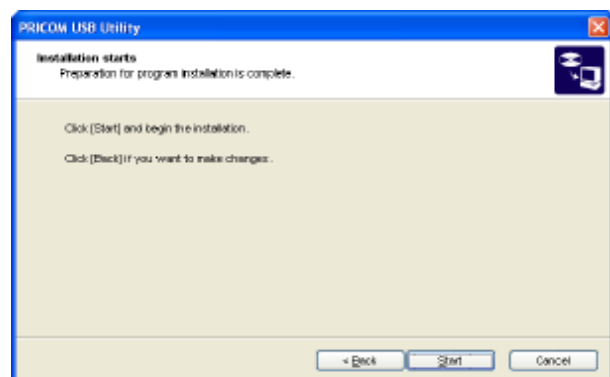


NOTE

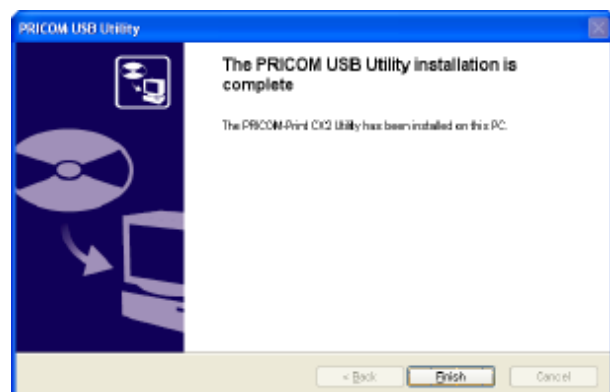
- If you select the existing GROUP, you can add PRICOM USB Utility to it.



8. Click **Start**.



9. Click **Finish**. to complete the installation.

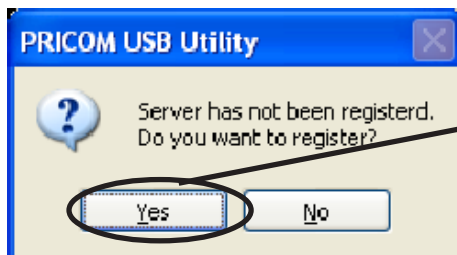


The PRICOM USB Utility has now been installed.

Using the PRICOM USB Utility

Start the PRICOM USB Utility, and configure it to share a USB scanner over the network through this product as a network scanner.

1. Click **“Start”** - **“Program”** - **“PRICOM USB Utility”**. If yes is clicked proceed to **step 3**. If no is clicked proceed to **step 2**.



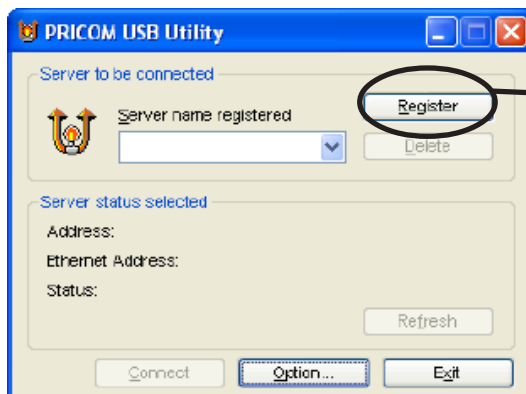
Click **Yes**, go to step 3.
Click **No**, go to step 2.



NOTE

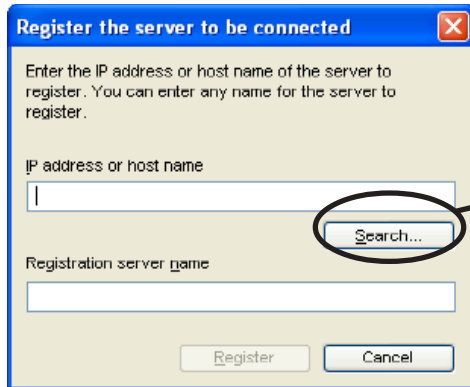
- If a product has already been registered, the screen in step 1 will not be displayed. The first screen will be the screen in step 2.

2. To register this product in the PRICOM USB Utility, click the **“Register”** button.



Click **Register**.

3. Click the **“Search...”** button. A list of Silex products on the network will be displayed.
Select the product to register.



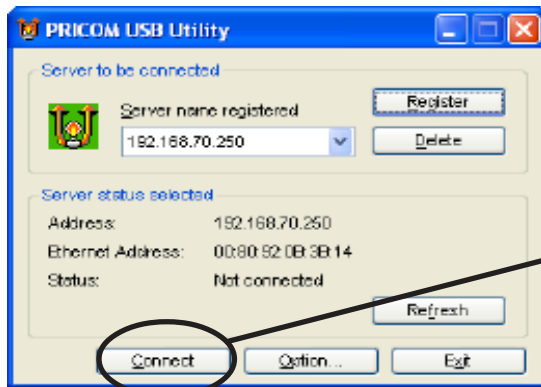
Click **Search**.



- You can change the registered scanner name. The default name consists of the IP address.

NOTE

4. To connect the PC and this product, click the **“Connect”** button.



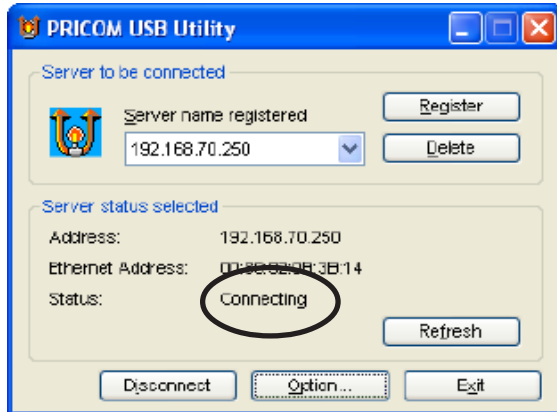
Click **Connect**.



- Once the “Connect” button is clicked, the USB scanner linked to this product can be used by this PC across the network.

NOTE

5. The network connection between your PC and USB scanner has been established.



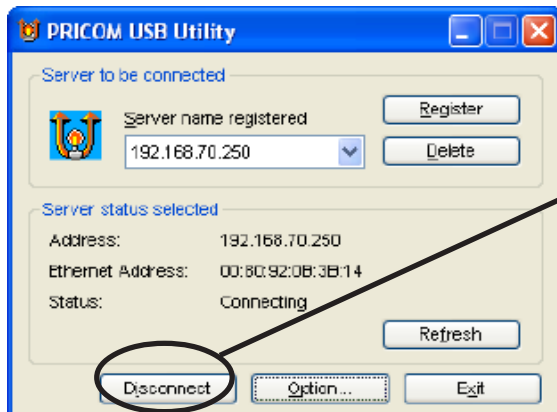
- Do not disconnect the USB cable or click disconnect in the PRICOM USB Utility while the scanner is in use. This may cause the PC or the scanner to become unstable. If either happens reboot this product, scanner and PC and then begin again.



NOTE

- Once connected, use the scanning utilities that came with the scanner for scanning.

6. Click **Disconnect** when scanning finished.



Click **Disconnect**.



- If the scanner is not used for longer than the time specified at "Automatic disconnection time"(factory default setting is 10 minutes), the PRICOM USB Utility automatically disconnects. "Automatic disconnection time" can be configured via TELNET and Web browser.



NOTE

- The PRICOM USB Utility can be added as an icon to the task tray in Windows.
- If **Disconnect automatically after the application program closed** is turned on in the optional setting dialog box, the connection will be disconnected automatically when the application software is closed.

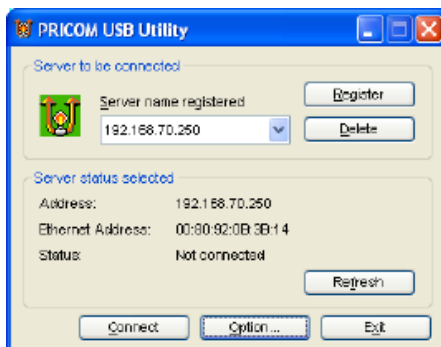
PRICOM USB Utility Definitions

This section explains the different buttons and configuration parameters of the PRICOM USB Utility.

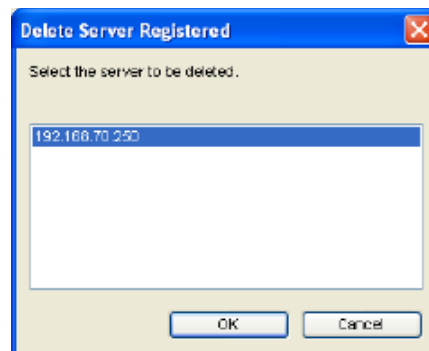
PRICOM USB Utility Screens

When starting the PRICOM USB Utility, the main screen will appear.

<Main Screen>



<Delete Screen>



Connected Server

Server name registered

Display the product to use.

- **Register** button

Register a new this product.

- **Delete** button

Un-register a product

The delete screen will appear and allow you to select the product you want to delete.

Server Status

Display the selected server's current status.

- **Refresh** button

Refresh the status information.

Main button

- **Disconnect/Connect** button

Disconnect/connect your PC to this product

- **Option** button

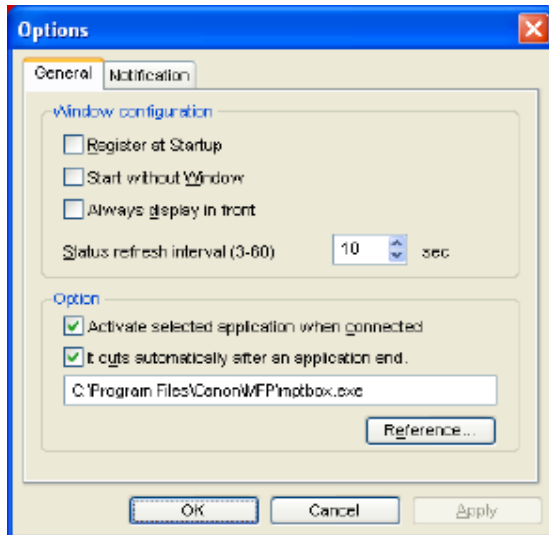
Bring up the optional configuration screen.

- **Exit** button

Exit the PRICOM USB Utility.

Option Dialogue

<Basic Configuration>



General

- Register at startup
Register the PRICOM USB Utility at **Startup**. (Default: OFF)
- Start without Window
Minimize the USB Utility when started (Default: OFF). Minimized icon is displayed in task bar
- Always display in front
Make the USB Utility the top window (Default: OFF). Another window with the same setting could displace it from being on top.
- Status refresh interval
Configure the status update interval time. (Default: 10 seconds)

Option

- **Activate selected application when connected. (Default: OFF)**

Once connected, the USB Utility will automatically start the selected application.

- **Disconnect automatically after selected application is closed. (Default: OFF)**

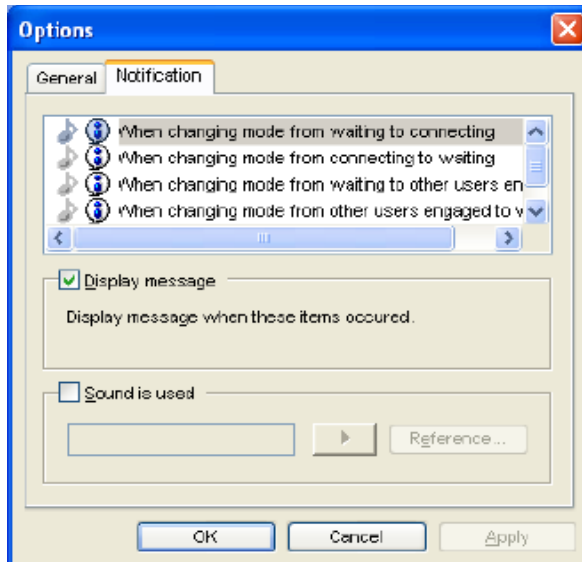
When the selected application is closed the connection will automatically be disconnected.



NOTE

- If you assign an application to be used with the scanner, all you will need to do is start the application.
- If you assign an application to start automatically during the installation, the parameter options will default to On.

<The Notification screen>



Notification

When the status of the scanner server changes, the PRIOCM USB Utility can notify you by message and/or by sound(Default Message: ON/Sound OFF).

- **When changing mode from waiting to connecting**
Notify you when the PC connects to the scanner server.
- **When changing mode from connecting to waiting.**
Notify you when the PC disconnects from the scanner server.
- **When changing mode from waiting to other users engaged**
Notify you when the scanner server is connected to another user.
- **When changing mode from other users engaged to waiting**
Notify you when another user disconnects from the scanner server
- **When Communication error**
Notify you when the PC and the scanner server have a communication problem.
- **Display message**
Check this for each message that you would like to receive.
- **Sound is used**
Check this to activate the sound for the selected change in status.
You can select your favorite sound.

8. Storage Server Function

This product allows USB storage devices to be shared across a network by using NetBEUI or NetBIOS over TCP/IP protocol.



- If a storage device has four partitions it will appear as four logical drives. Four is the maximum number of partitions (a fifth partition can not be used).
- This product supports a file format of FAT12/16/32. It will not support a drive formatted by NTFS etc.
- silex technology is not responsible for the loss or corruption of data in memory devices including hard disk, and not responsible for the leak, manipulation, loss, or corruption of data in memory devices connected to PRICOM after unauthorized access.
- In order to use the USB memory device connected to the PRICOM, the NetBEUI protocol and the NetBIOS protocol must be setup.



- This product does not support to magnet optical drive device such as CD/DVD.
- This product allows shared a USB storage devices over the network in Windows through the USB port.
- This product allows to simultaneously connect up to 4 printers, 1 scanner and 4 USB storage devices through a USB hub.

Initial Setup

Connect the USB Storage Device to this Product

Once the USB storage device is connected to a network via this product, the USB storage device can be accessed over the LAN.



NOTE

- Do not disconnect the USB cable or Ethernet cable while accessing to a USB storage device.
- A password can be assigned to restrict access.
- The file time will be assigned by the NetBIOS protocol.
- This product uses a Type A USB port. The USB storage device should have a Type B USB port.
- USB devices do not need to be powered down to be connected or disconnected.

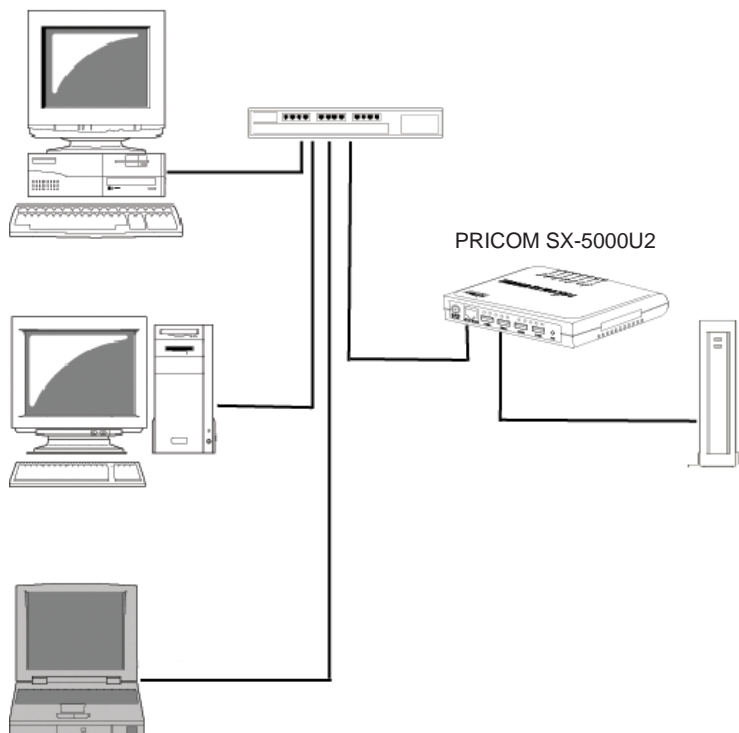
<USB Connector>



A Type



B Type



Sharing a USB Storage Device

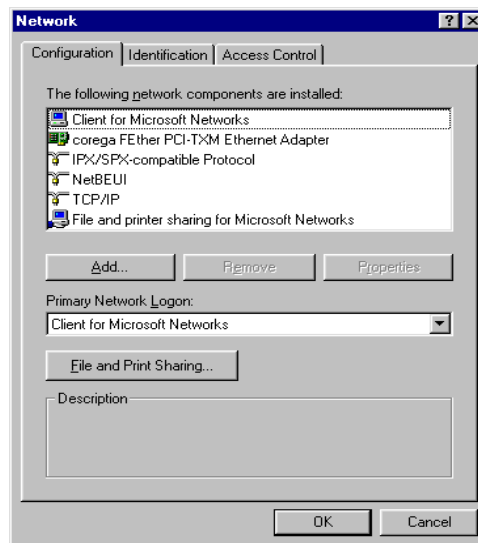
In order to perform reading and writing to a USB storage device linked to this product across the network, **NetBEUI** and the **Microsoft network client** must be installed on the personal computer.

Share a USB Storage Device in Windows98/Me

Verify the network configuration in Windows 98/Me (NetBEUI).

Verify that **NetBEUI** and **Client for Microsoft Networks** are installed.

1. Select **Start - Settings - Control Panel**.
2. Click the Network icon of **Control Panel**.
3. Verify that **NetBEUI** and **Client for Microsoft Networks** are installed click **Add** to add them.



NOTE

- If the current network component list does not have NetBEUI protocol, click the **Add - Protocol- Microsoft - NetBEUI**.
- If the current network component list does not have **Client for Microsoft Networks**, click the **Add - Service - Client for Microsoft Networks**.

Verify the network configuration in Windows 98/Me (NetBIOS over TCP/IP)

Verify that **Client for Microsoft Networks** and **TCP/IP** are added in the Network configuration on Windows 98/Me and NetBIOS over TCP/IP is enabled in **TCP/IP** in property.

1. Select **Start - Settings - Control Panel**.
2. Double click **Network** icon in **Control Panel**.
3. Verify that **Client for Microsoft Networks** and **TCP/IP** are added in Network configuration.



NOTE

- If the current network component list does not have **TCP/IP** protocol, click **Add - Protocol - Microsoft - TCP/IP**.
- If current network component list does not have **Client for Microsoft Networks**, click **Add - Service - Client for Microsoft Networks**.

4. View the properties of **TCP/IP**, verify **Enable to NetBIOS over TCP/IP** is selected.



NOTE

- Usually, NetBIOS is enabled at default setting.

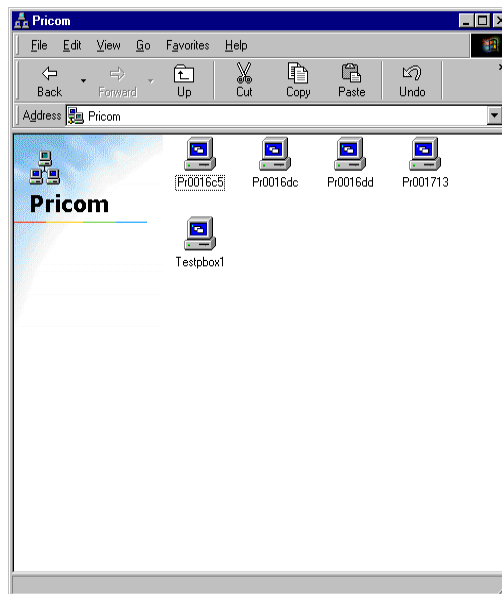
Use a USB storage device in Windows 98/Me

This section will explain how to use a USB storage device in Windows 98/Me.

1. Connect a USB storage device to this product.
2. Click **Network Computer** icon on desktop, select **Network place - Pricom** in WORKGROUP.
3. Double Click this product's icon. The name will be displayed as "Pr" and the last 6 digits of the Ethernet Address.

Example:

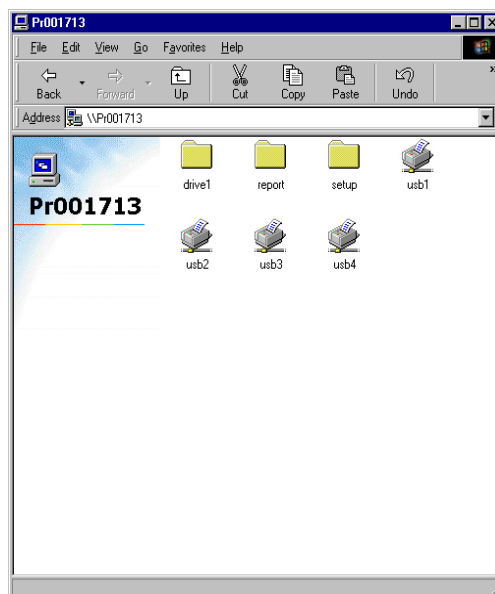
If your product's Ethernet Address is "00:80:92:00:17:13", the computer name is "Pr001713".



4. Double click the folder "DRIVE1" for the USB storage device to share the folder over the network.



- The folder means are displayed as **DRIVE1 - DRIVE4** if multiple storage devices are connected.



Share a USB Storage Device in Windows 2000

Verify the network configuration in Windows 2000 (NetBEUI)

Verify that **NetBEUI** and **Client for Microsoft Networks** have been added in the network configuration of Windows 2000.

1. Select **Start - Settings - Control Panel - Network and Dial up Connection**.
2. View the properties of **Local Area Connection**.
3. Verify that **Share the Microsoft network connection service** has been added.



NOTE

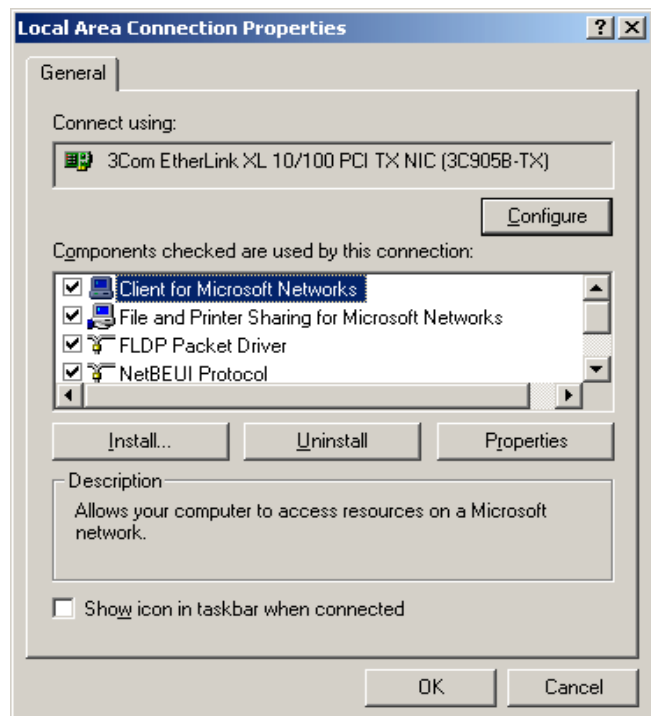
- If **Share the Microsoft network connection service** was not displayed, click **Install** and select client - **Share the Microsoft network connection service**.

4. Verify that the **NetBEUI Protocol** has been added.



NOTE

- If the **NetBEUI Protocol** was not displayed, click **Install** and select **Protocol** then **NetBEUI Protocol**.



Verify the network configuration in Windows 2000(NetBIOS over TCP/IP)

Verify that **Internet Protocol (TCP/IP) - Client for Microsoft Networks** have been added as well as NetBIOS in **Internet Protocol(TCP/IP)**.

1. Select **Start - Settings - Control Panel - Network and Dial up Connection**.
2. Open the properties of **Local Area Connections**.
3. Verify that **Client for Microsoft Networks** has been added.



NOTE

- If you cannot find **Client for Microsoft Networks** in the list, click **Install** then select **Client - Client for Microsoft Networks**.

4. Verify that **Internet protocol (TCP/IP)** has been installed.



NOTE

- If you cannot find **Internet protocol (TCP/IP)** in the list, click **Install** then select **Protocol - Internet Protocol**.

5. Select **Internet Protocol (TCP/IP) - Properties - Detail - WINS** tab, and make sure that the enable NetBIOS over TCP/IP is selected.

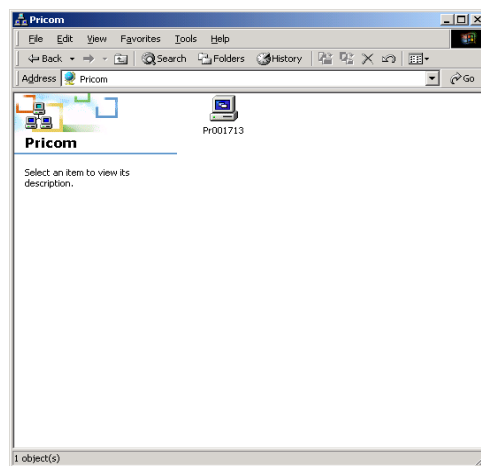
Use a USB storage device in Windows 2000

This section will explain how to use a USB storage device in Windows 2000 environments.

1. Connect a USB storage device to this product.
2. Select **My network - Network - All networks - Microsoft Windows Network**, and open the **Pricom** in workgroup.
3. Double Click this product's icon. The name will be displayed as "Pr" and the last 6 digits of the Ethernet Address.

Example:

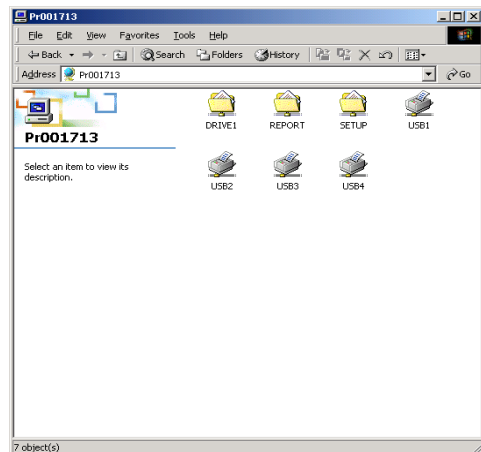
If your product's Ethernet Address is "00:80:92:00:17:13", our product's computer name is "Pr001713".



4. Double click the folder "DRIVE1" for the USB storage device to share the folder over the network.



- The folder means are displayed as **DRIVE1 - DRIVE4** if multiple storage devices are connected.



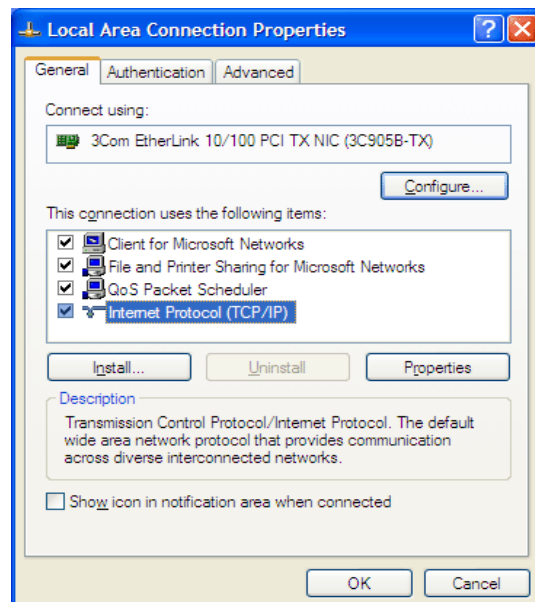
Share a USB Storage Device in Windows XP/Windows Server 2003

Verify the network configuration in Windows XP/Windows Server 2003

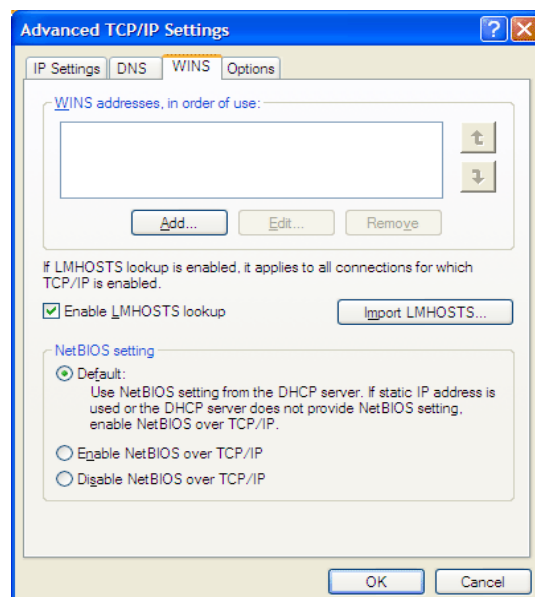
Verify that NetBIOS has been configured in **Internet Protocol (TCP/IP)** on Windows XP/Windows Server 2003 and **Client for Microsoft Networks** have been added.

1. Select **start - Control Panel - Network and Internet Connection - Network Connection**.

2. Open the properties of **Local Area Connection**.



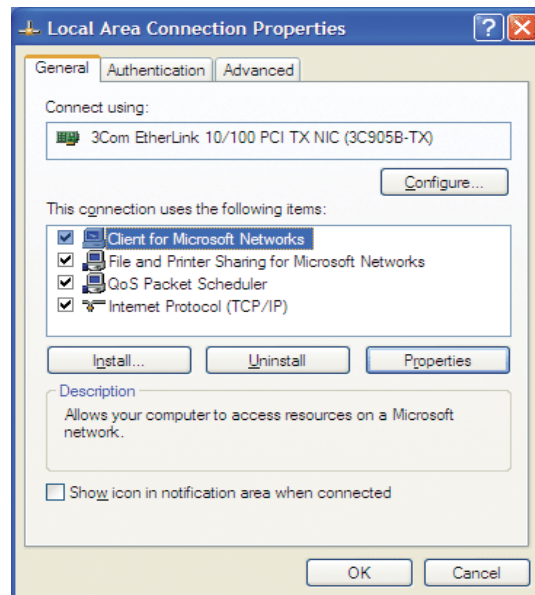
3. Open **Detail - WINS**, make sure to select **Default** or **Enable NetBIOS over TCP/IP** in NetBIOS configuration.



4. Verify **Client for Microsoft Networks** has been added.



- If you use NetBIOS over TCP/IP protocol in Windows XP, uncheck the **Control access from internet.** in **Properties of Local Area Connection** - **Detail Setting.**



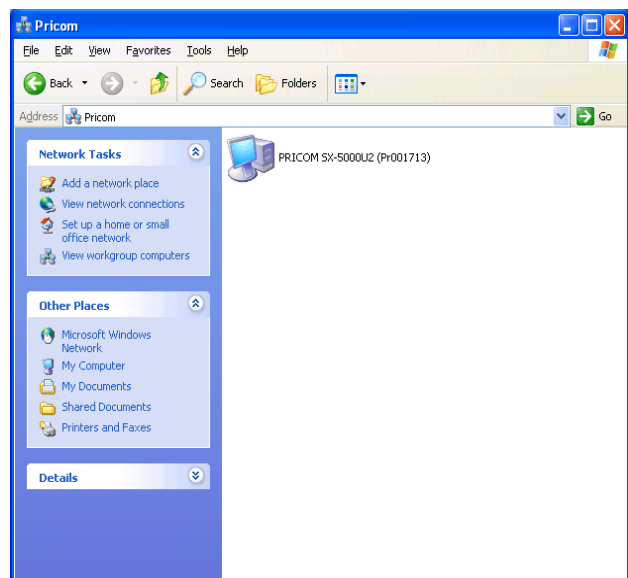
Use a USB storage device in Windows XP/Windows Server 2003

This section will explain how to use a USB storage device in Windows XP/2003 environment.

1. Connect a USB storage device to this product.
2. Select **My Network Places - Display the Computers of Workgroup - Microsoft Windows Network**, open the **Pricom** in workgroup.
3. Double Click this product's icon. The name will be displayed as "Pr" and the last 6 digits of the Ethernet Address.

Example:

If your product's Ethernet Address is "00:80:92:00:17:13", our product's computer name is "Pr001713".

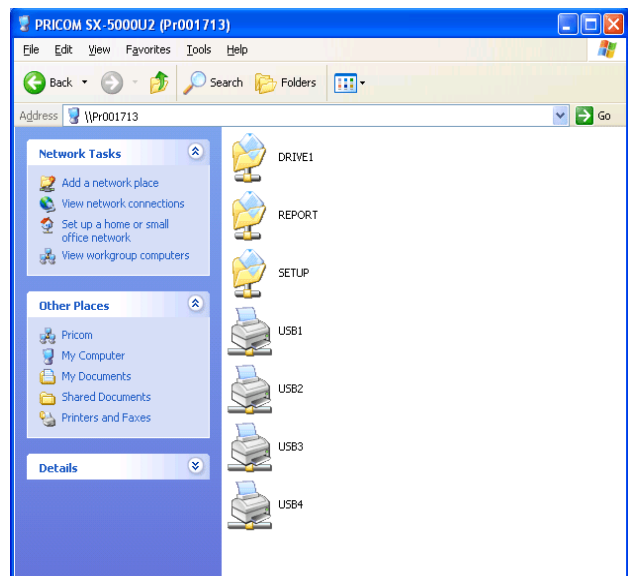


4. Double click the folder "DRIVE1" for the USB storage device to share the folder over the network.



NOTE

- The folder means are displayed as **DRIVE1 - DRIVE4** if multiple storage devices are connected.



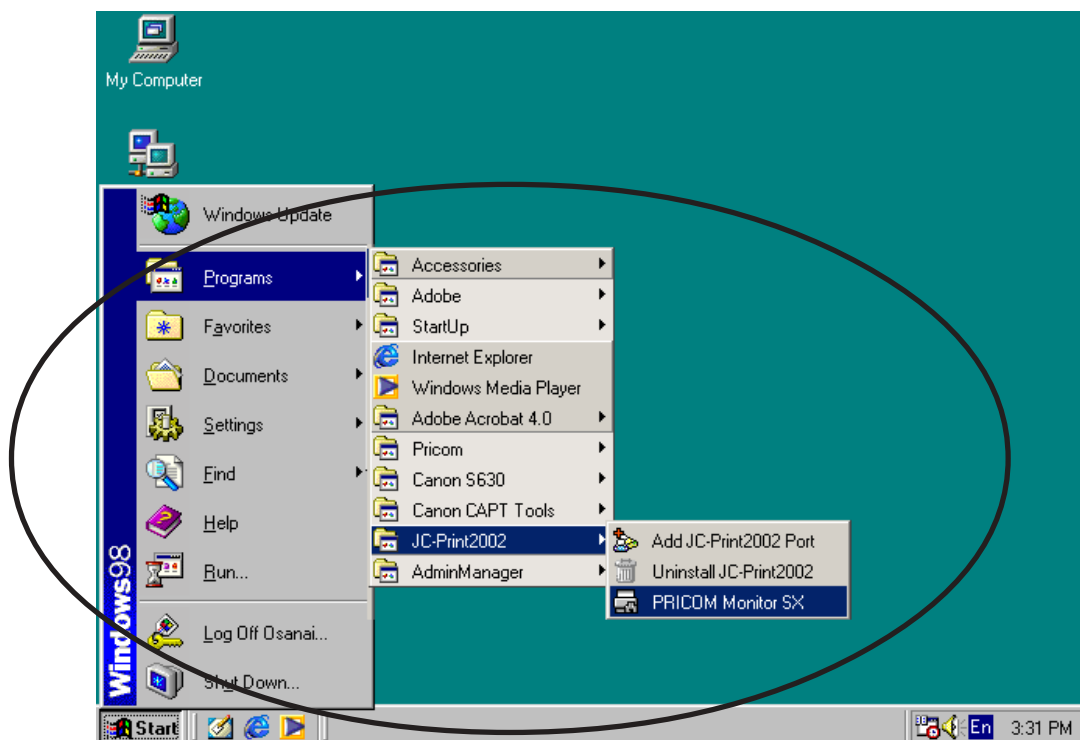
9.PRICOM Monitor SX

About PRICOM Monitor SX

The PRICOM Monitor SX is a real time printer status monitor. The PRICOM Monitor SX will display printer status on your PC screen using Pop-up messages. The Pop-up messages can be displayed in character mode or full mode.

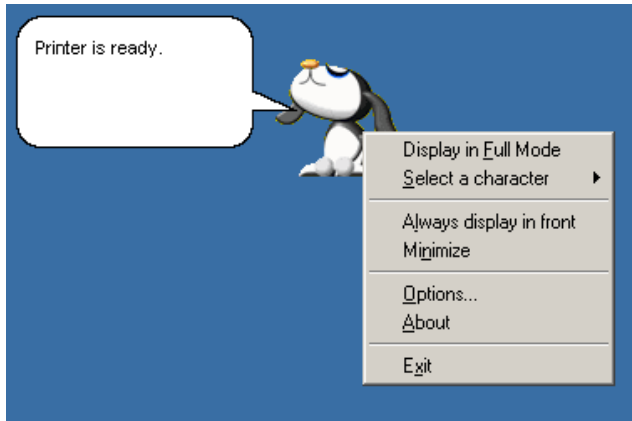
Starting PRICOM Monitor SX

Select **Start - Programs - JC-Print2002**(or a group you have designated) - **PRICOM Monitor SX**.



Display PRICOM Monitor SX (Character Mode)

Printer status can be displayed by character animation and words in a balloon.



Characters

- Animation displays printer status.



- You can select which character to be used from four choices.

NOTE

Printer status messages

- The following status messages can be displayed:
 - The printer is printing.
 - The printer is busy
 - The printer is offline. etc..



- Click on the text to close the status balloon. Click on the character to display the status in text.

NOTE

Menu

The menu bar will be displayed by right-clicking the character and has the following options.

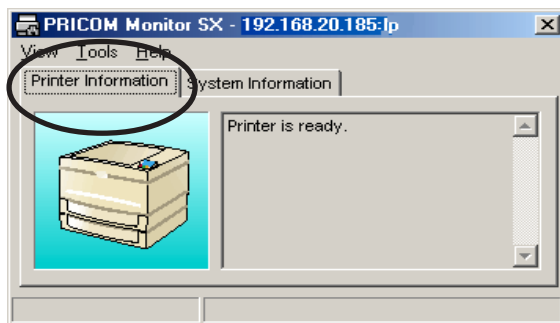
Item	Description
Display in full mode	Displays printer status by window
Select character	Switches the character to be displayed. You can select a character to be displayed among the four characters.
Always display in front	Always displays the PRICOM Monitor SX in front. However, when another window is set to display in front it may displace the PRICOM Monitor SX.
Minimize	Minimize the window. To get it back to original size, click the icon in the task bar.
Configuration option	Display the configuration option screen.
Version information	Display the version information
Finish	Close the PRICOM Monitor SX

Display PRICOM Monitor SX (Full Mode)

The printer status can be displayed in a standard window. The Printer Information window will display the printing and communication status by animation and in text. It will also display the PRICOM model number.

Printer Status Information

The printer operating status and printing status can be displayed.



Printer status message

Printer Status is displayed by text message.

- The printer is printing
- The printer is busy
- The printer is offline.

Product name

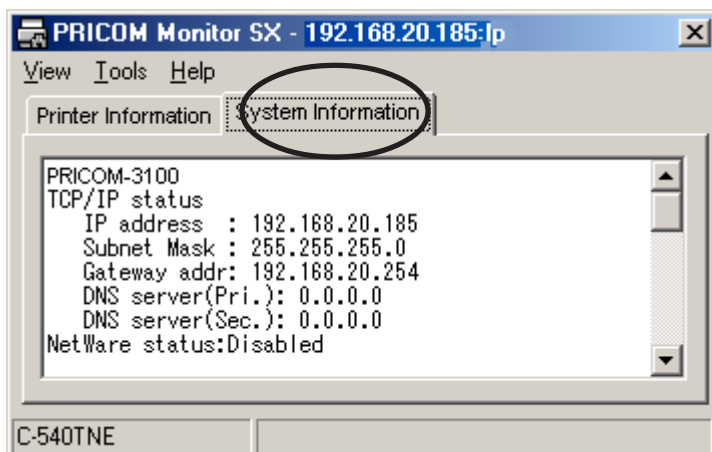
This product name is displayed.

Printing data transfer

Printing data transfer status can be viewed.

System Information

The system information screen will display the PRICOM configuration information.



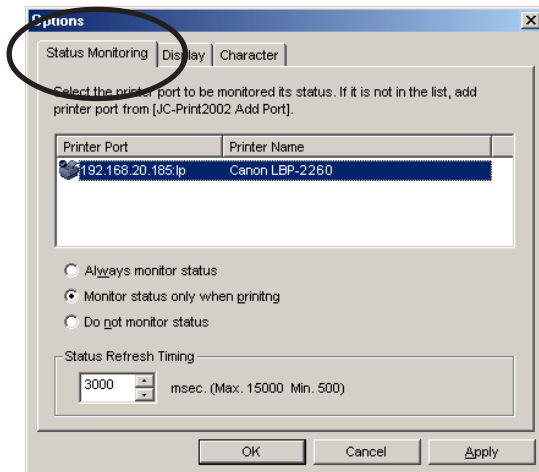
Menu

Menu	Item	Description
Display	Display in character mode	Display the printer status by character and balloon
	Always display in front	Always displays the PRICOM Monitor SX in front. However, when another window is set to display in front it may displace the PRICOM Monitor SX
	Minimize	Minimize the window. To get it back to original size, click the icon in the task bar
	Finish	Close the PRICOM Monitor SX
Utility	Configuration options	Display the configuration option screen.
Help	Version information	Display the version information

Options Setting

Use this dialogue to configure how the PRICOM Monitor SX will be used. Click Options while in character or full mode to display the dialogue menu.

Status Monitor



JC-Print2002 Port List

- A list of JC-Print2002 ports registered in your PC will be displayed. Select the product to be monitored from the list.



- LPR ports and Raw ports are displayed in the JC-Print2002 port list. IPP ports are not displayed.

- Always monitor status

Select this option to constantly monitor the printer status.

- Monitor status only when printing

Select this option to monitor the printer status only while printing using a JC-Print2002 port. When the printing data transmission is complete, the status monitoring window will be automatically deactivated.

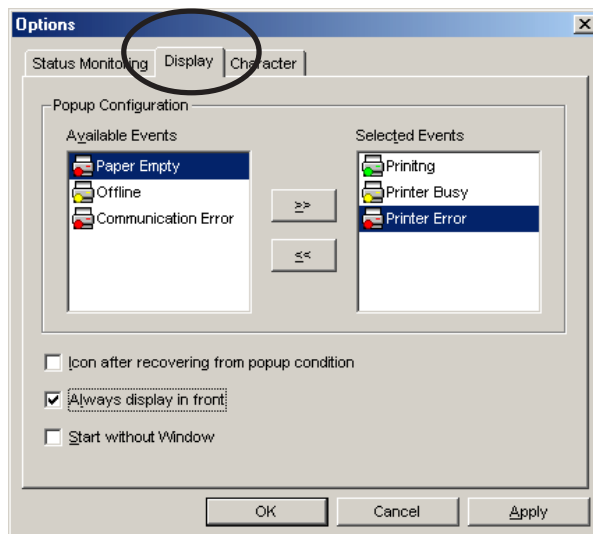
- Do not monitor status

This option will disable the printer status monitoring. To reactivate the printer status monitoring function, you need to restart the PRICOM Monitor SX.

- Status refresh timing

Enter the rate at which the monitor will retrieve the status information.

Display tab



- Available events

This list shows the events which the PRICOM Monitor SX can display.

- Selected events

This list shows the events selected to be displayed by the PRICOM Monitor SX.

- >>

Use the >> to add the selected item from the Available Events list to the Selected Events list.

- <<

Use the << to remove the selected item from the Selected Events list. The item will then be available in the Available Events list.

- Icon after recovering from popup condition

By checking this, the PRICOM Monitor SX will be minimized and placed in the task bar after the printer event is closed.

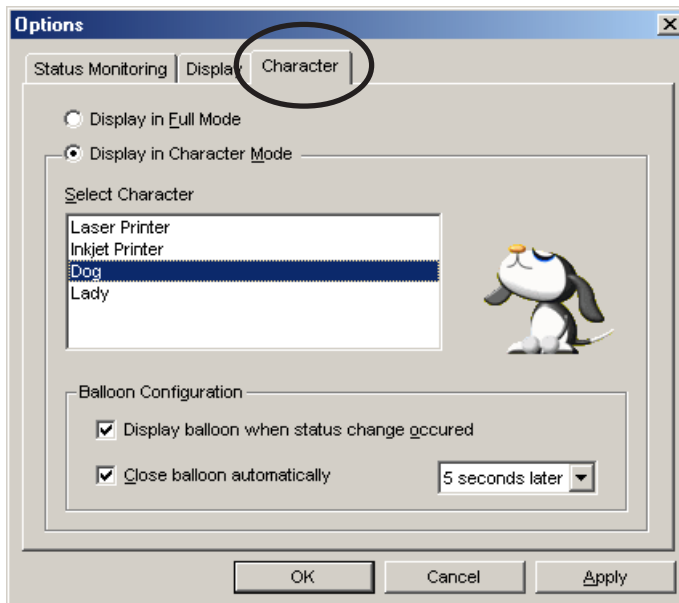
- Always display in front

Checking this will cause the PRICOM Monitor SX to always be displayed on top.

- Start without Window

When checked, the PRICOM Monitor SX will start minimized.

Character



- Display in full mode

Displays the printer status by a standard windows screen.

- Display in character mode

Displays the printer status by the character selected and a balloon.

- Select character

Select the character desired to inform you of printer status.

- Display balloon when status change occurred

Check this option to have the printer status described in a balloon when a printer status change occurs.

- Close balloon automatically

Check this option to close the balloon automatically after the specified time.
The default setting is 5 seconds.

10. Questions and Answers

This section contains some Frequently Ask Questions (FAQ) and the corresponding answers. For a more detailed and up to date FAQ, refer to our web site.

The main menu does not start after inserting the CD-ROM

- If your computer does not support autorun, the menu will not start automatically. Execute Autorun.exe in the root directory of the CD-ROM.

This product is not found after searching in the configuration utility (QuickSetup, AdminManager) or this product is not recognized on the network

- Check the following and retry.
 1. Verify that this product is powered up. If this product status's LED is not on, review the Hardware Installation section of this manual.
 2. Verify the Ethernet connection. If the 10BASE or 100BASE LED of this product is not on, review the Hardware Installation section of this manual.
 3. Verify that the Ethernet cable and/or a hub are working properly.
 4. Verify that this product is on the same LAN segment.
 5. If using more than one network interface card, disable the card not connected on the same LAN segment as this product.
 6. Print a self diagnostic then verify the IP address is compatible with the one on the PC.
 7. Restore factory defaults to reconfigure this product.

Print job will not print

- Check the following and retry.
 1. Verify that this product is powered up. If this product status's LED is not on, review the Hardware Installation section of this manual.
 2. Verify the Ethernet connection. If the 10BASE or 100BASE LED of this product is not on, review the Hardware Installation section of this manual.
 3. Verify that the Ethernet HUB and cable are not damaged and are working properly.
 4. Print data such as text may not be printed due to nonexistence of an eject command. In such a case, push off-line button, then Eject button to eject the data.

5. If you are using TCP/IP protocol, ping this product with the assigned IP address to see if there is any reply. If there is no reply to the ping, ping another device to verify the PC is configured properly. This product's IP address may not have been configured properly. Reset this product to factory default and configure again from the beginning.

Example:

Issue ping in Windows 98 MS-DOS

Select Start - Programs - MS-DOS Prompt, then execute Ping xxx.xxx.xxx.xxx.

You will see the message below. "xxx.xxx.xxx.xxx" is the IP address configured on this product.

-When there is a reply to Ping:

Reply from xxx.xxx.xxx.xxx:bytes=32 time=58ms TTL=253

Reply from xxx.xxx.xxx.xxx:bytes=32 time=58ms TTL=253

Reply from xxx.xxx.xxx.xxx:bytes=32 time=58ms TTL=253

Reply from xxx.xxx.xxx.xxx:bytes=32 time=58ms TTL=253

-When there is no reply to Ping:

Request timed out.

Request timed out.

Request timed out.

Request timed out.

6. Login this product in telnet. If you cannot login, this product should not be assigned with a proper IP address. Check the IP address of this product, then change the parameter.
7. If this product's network environment is different from your PC network environment, Initialize the product to factory default, and redo the initial setup.
8. Verify the printer port name that is displayed is JC-Print2002 LPR Port.

I get an error message while printing.

- If you try to print while other users are printing large amounts of data (e.g. many pages or color pages with high resolution), the printer is unable to accept your print job until the ongoing print job is finished. If the waiting time of your print job exceeds a certain limit, a time out occurs, which causes an error message. If this occurs, send the print job again after the first job has finished.

This product cannot perform LPR printing.

- On some printers, LPR printing may not be used. Please check our web page for compatibility information.

Can this product be returned to a factory default?

- It can be returned to a factory default by using the push SW. Refer to the Chapter 2 PRICOM SX-5000U2.

I can not share a USB scanner.

- Windows 2000/XP/2003 is required for sharing a USB scanner.
- This product can connect only one USB scanner.
- Is the USB scanner powered up?
- Check the USB scanner specification, and re-select the port corresponding to the specification.
If your USB scanner requires a bus power of more than 640mA, please use the AC adapter included with the USB scanner.

A USB storage device is not sharable.

- To share a USB storage device, you must use Windows.
- Does the storage device connected have four or less partitions?
This product can recognize up to four partitions on a storage device. This product will not recognize more than four partitions (the fifth partition can not be used).
- Is the USB storage device powered up?
- Even if a connected device can simultaneously read from five or more media cards, a maximum of four will be recognized. The remaining cards will not be recognized.
- This product supports a file format of FAT12/16/32. It will not support a drive formatted by NTFS etc.
- Media cannot be formatted from this product. Please format with a personal computer beforehand

Appendix

Print Using a LPR Port Windows 2000/Windows XP/Windows Server 2003.

This section explains how to print using LPR client functionality embedded in Windows2000/WindowsXP/Windows Server 2003.



- The printer status monitor cannot be used when using a Windows LPR port.
- The following example is using Windows XP. The screens will vary between operating systems.

When setting up this product in Windows 2000/Windows XP/Windows Server 2003, the authority of Administrator rights are required.

Print Using a Windows 2000/Windows XP/Windows Server 2003 Standard TCP/IP Port



- The following example use Windows XP. If you use Windows 2000, Windows Server 2003 the screens will be different.
- To configure this product, you must have the Administrator rights.

1. Click **start - Control Panel - Printers and Other Hardware - Add a printer.**



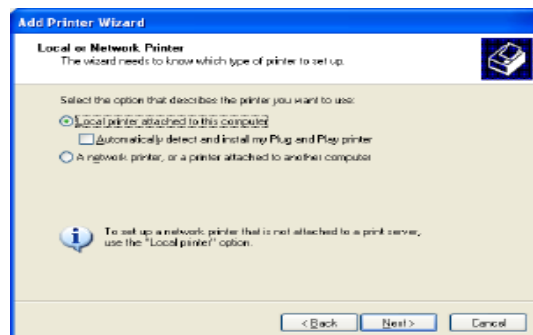
- For Windows 2000, click **Start - Settings- Printers**, click **Add a Printer.**



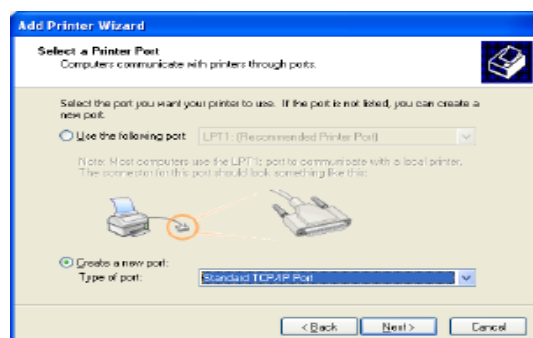
2. Check **local printer attached to this printer you want to use.** And uncheck **Automatically detect and install my Plug and Play printer.** Click **Next.**



- For Windows 2000, select Local printer and remove the check from **Automatically detect and install my plug and play printer.**



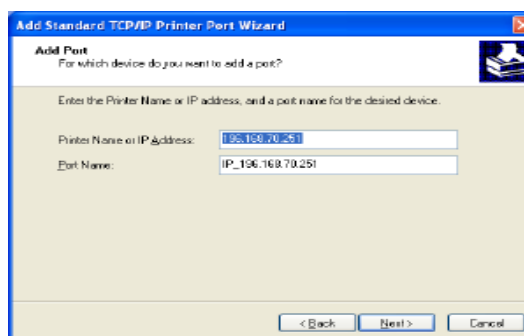
3. Check **Create a new port.** And Select **Standard TCP/IP Port.** Click **Next.**



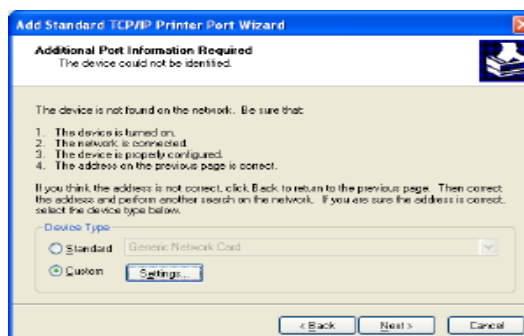
4. Click **Next**.



5. Enter the IP address that has been assigned to this product. Enter a port name or use the default name (IP_xxx.xxx.xxx.xxx).



6. Check **Custom**, Click **Configure**.

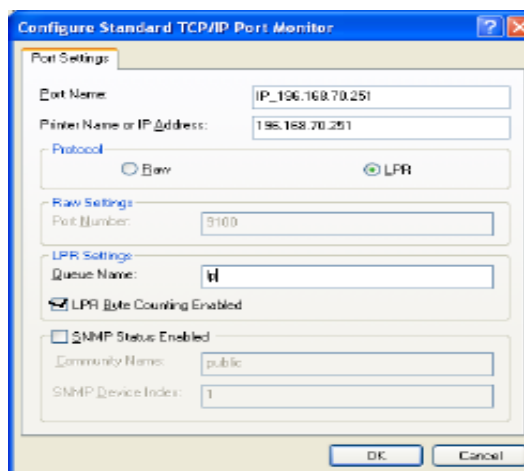


7. Check **LPR**, and type **lp_u1** for the queue name. Uncheck to **Enable LPR byte count**. Click **OK**.



NOTE

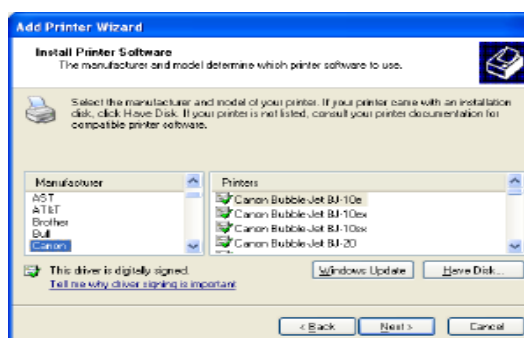
- After clicking **OK**, the process will return to screen #6. Click **Next**.
- The queue name should correspond to the printer port (use lp_u1, lp_u2, lp_u3, or lp_u4).



8. Click **Finish**.



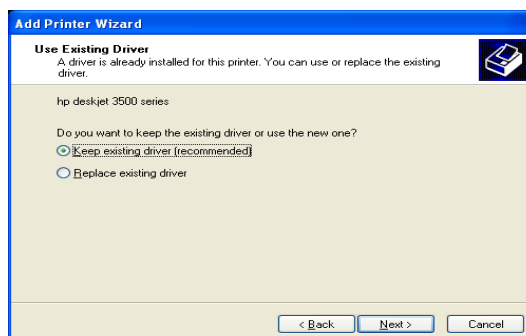
9. Select printer driver you want to use, click **Next**.



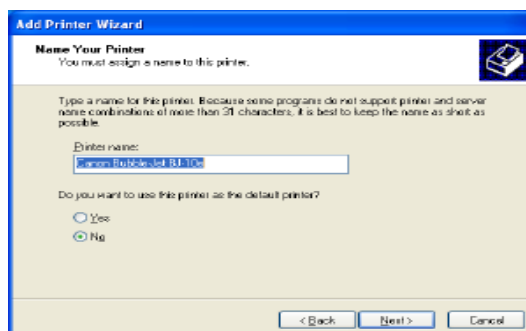
10. Select **Use current driver** or **Replace existing driver**. Click **Next**.



- If you have not installed the latest driver, select Replace existing driver.



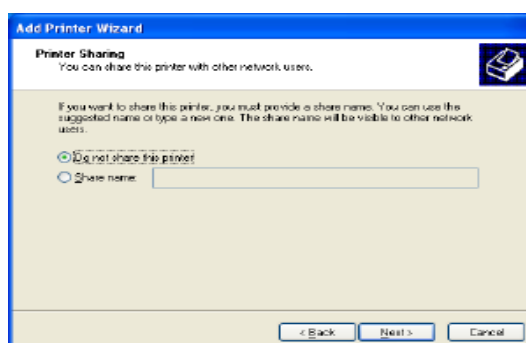
11. Enter name for the printer. Select **Yes** to make this the default printer. Click **Next**.



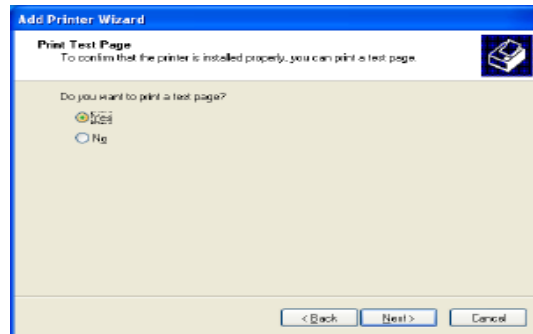
12. Select whether to **Share name** or **Do not share this printer**. If you select **Share name**, you can type printer name you want to use. Click **Next**.



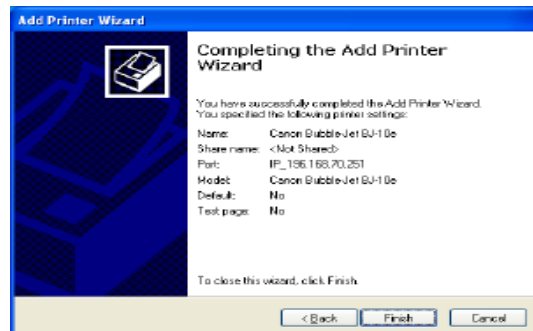
- If the printer is shared with other computers in the same network, select **Do not share this product**.



13. Select **Yes** to do print test page. Click **Next**.



14. If the test page is printed properly, configuration is complete. Click **Finish**.



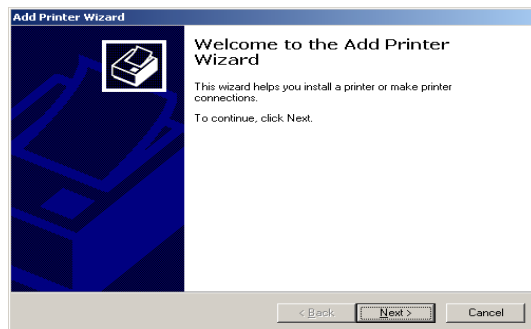
Print Using a Windows 2000 LPR Port



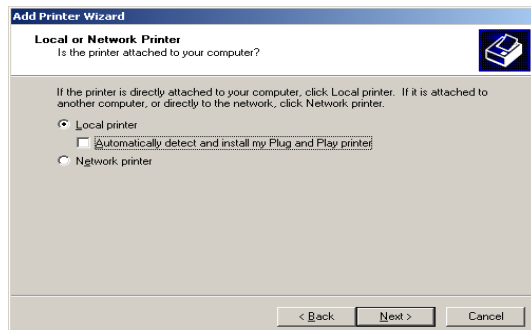
NOTE

- In order to print using a LPR port, LPR must be installed. If it is not installed select **Start - Settings- Control Panel - Add or Remove Programs**, then **Add/Remove Windows Components**. The Windows Components Wizard will be displayed, then click **Components- Other Network File and Printing Services - Details Print Services for Unix - OK**. Windows Components Wizard will be displayed. Click **Finish**.

1. Select **Start - Settings - Control panel Printers**, then double click **Add Printer**. Add Printer wizard will be displayed. Click **Next**.



2. Check **Local printer attached to this computer** and uncheck **Automatically detect and install my plug and play printer**.

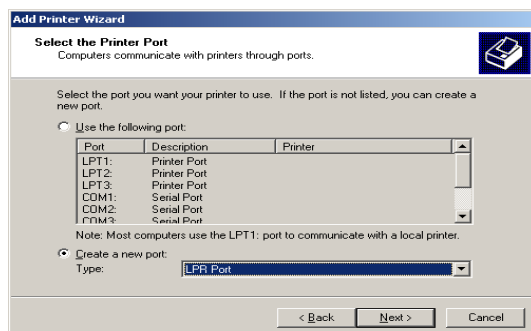


3. Check **Create a new port**. Select **LPR Port** in Type box. Click **Next**.



NOTE

- If the port has already been created, select it instead of creating another port.



- Input the IP address assigned for this product in **Name or Address of server providing lpd** box. And input queue name(example:"lp_u1") in **Name of printer or print queue on that server** box. And click **OK**.



NOTE

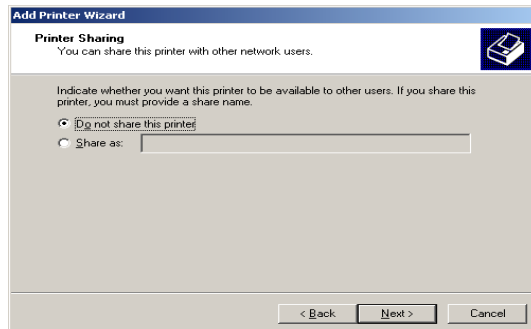
- The queue name should correspond to the printer port (set lp_u1, lp_u2, lp_u3 or lp_u4).

- Select the printer driver you want to use. Click **Next**.

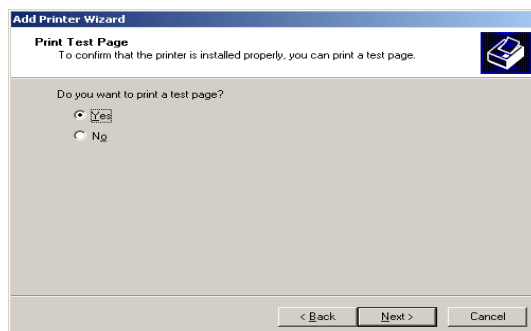
- Select **Keep existing driver (recommended)** or **Replace existing driver**. Click **Next**.

- Enter name for the printer. Select **Yes** to make this the default printer. Click **Next**.

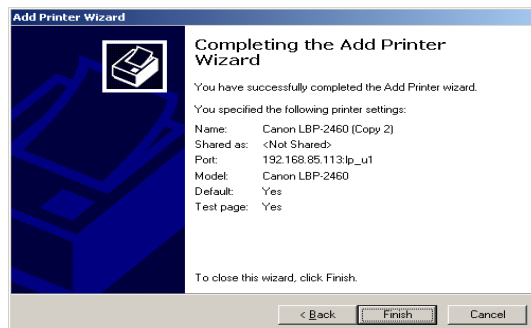
8. Select whether to **Share name** or **Do not share this printer**. If you select **Share name**, you can type printer name you want to use. Click **Next**.



9. Select **Yes**. Click **Next**.



10. Verify the configuration. If the configuration is correct, click **Finish**. If the test page is printed properly, configuration is complete.



Print Using a Windows XP, Windows Server 2003 LPR Port



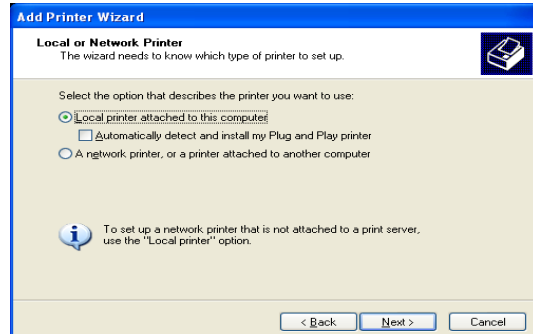
NOTE

- In order to print using a LPR port, LPR must be installed. If it is not installed select **Start - Control Panel - Add or Remove Programs**, then **Add/Remove Windows Components**. The Windows Components Wizard will be displayed, then click **Components, Other Network File and Printing Services, Details, Print Services for Unix - OK**. Windows Components Wizard will be displayed. Click **Finish**.

1. Select **start - Control Panel - Printers and Other Hardware - Add a printer**.



2. Check **Local printer attached to this computer** and uncheck **Automatically detect and install my plug and play printer**.

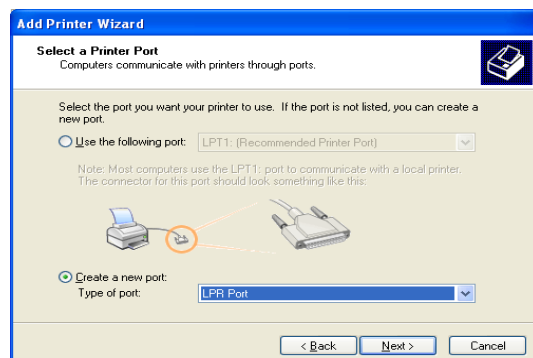


3. Check **Create a new port** and select **LPR Port** in **Type of port**. Click **Next**.



NOTE

- If the port has already been created, select **Instead of creating another port**.

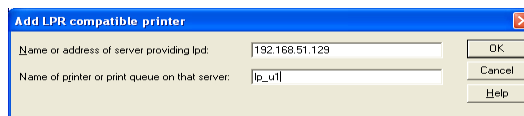


- Input the IP address assigned for this product in **Name or Address of server providing lpd box**. And input queue name(example:"lp_u1") in **Name of printer or print queue on that server** box. And click **OK**.

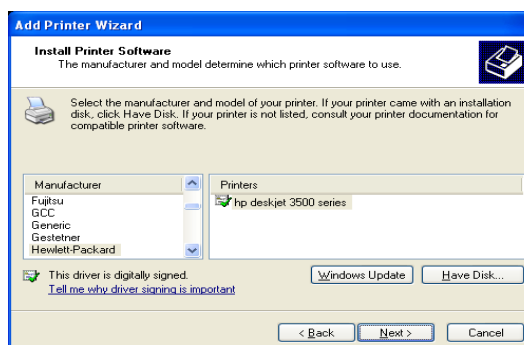


NOTE

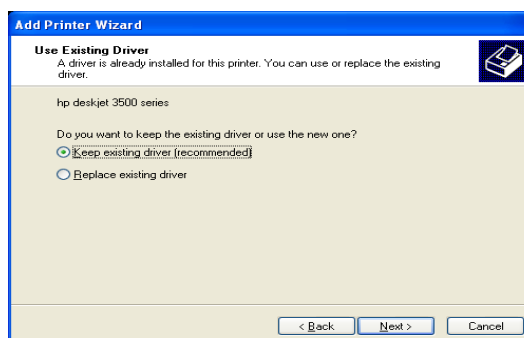
- The queue name should correspond to the printer port (set lp_u1, lp_u2, lp_u3 or lp_u4).



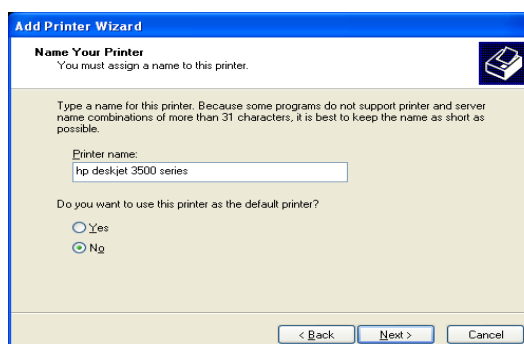
- Select the printer driver you want to use. Click **Next**.



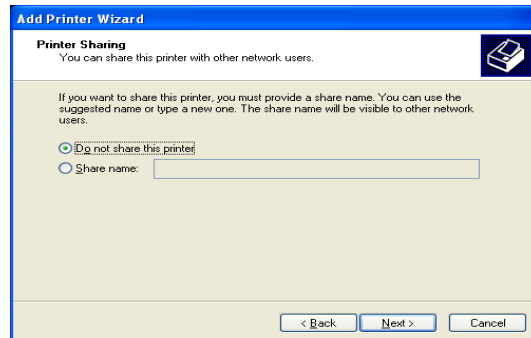
- Select **Keep existing driver (recommended)** or **Replace existing driver**. Click **Next**.



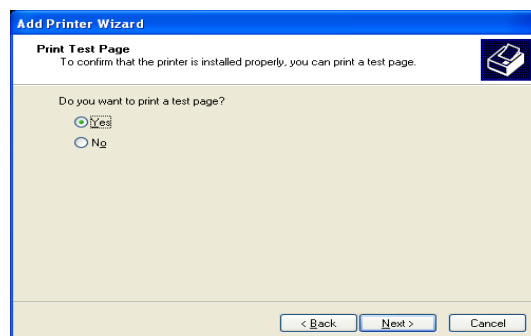
- Enter a name for the printer. Select **Yes** to make this the default printer. Click **Next**.



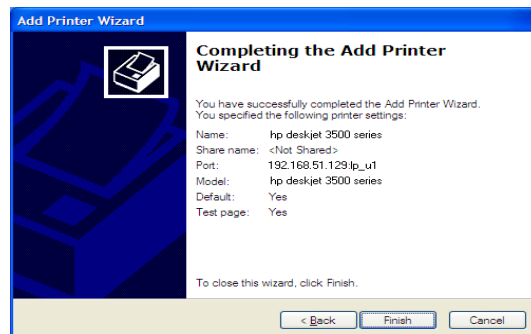
8. Select whether to **Share name** or **Do not share this printer**. If you select **Share name**, you can type printer name you want to use. Click **Next**.



9. Select **Yes**. Click **Next**.



10. Verify the configuration. If the configuration is correct, click **Finish**. If the test page is printed properly, configuration is complete.



Print Using a Windows 2000/XP and Windows Server 2003 IPP Port

The section explains the setup procedure when printing using the IPP printing function of Windows 2000/XP and Windows Server 2003.

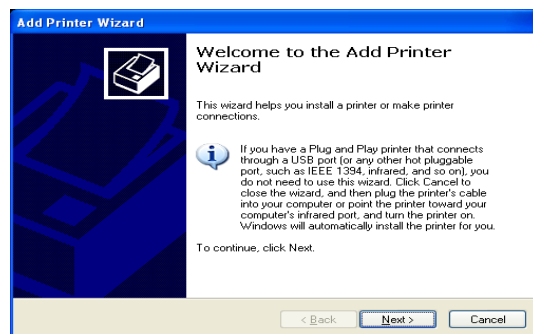


- When setting up this product in Windows 2000/Windows XP, and Windows Server 2003, the Administrator rights are required.
- The following example is uses Windows XP. The screens will vary between operating systems.

1. Select **start - Control Panel - Printers and Other Hardware**, and then **Add a printer**.



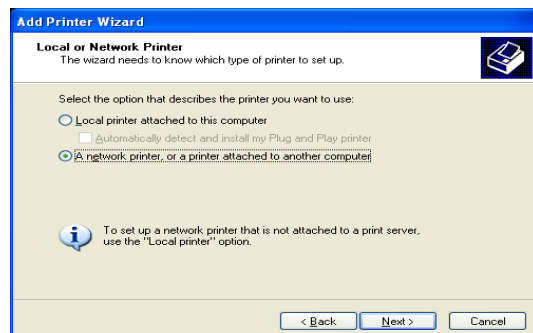
- For Windows 2000, click **Start-Settings - Printers**, then double-click **Add a Printer**.



2. Select **A new network printer, or a printer attached to another computer**.



- For Windows 2000, select **Network printer**.



3. Select **Connect to a printer on the Internet or on a home or office network**: and enter a URL or IP address of this product. Click **Next**.

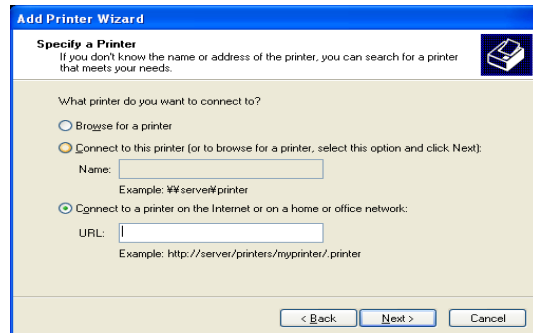
Example:

- When the URL is "abc.com", enter http://abc.com/ipp/lp_u1 or http://abc.com/ipp
- When the IP address is "192.168.10.100", enter http://192.168.10.100/ipp/lp_u1 or http://192.168.10.100/ipp

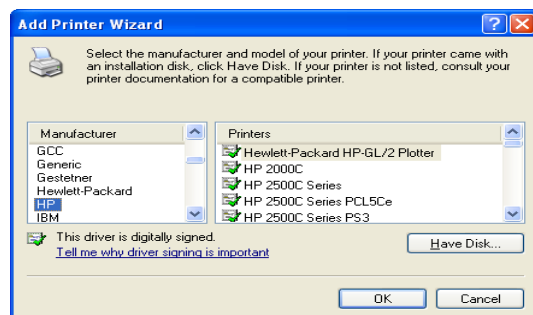


NOTE

- For Windows 2000, The **Connection of Printer** screen may be displayed. Click **OK**



4. Select the printer driver you want to use. Click **OK**.

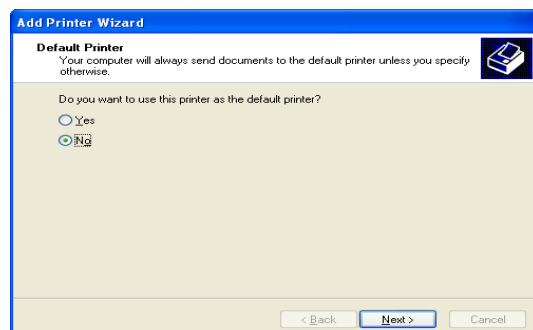


5. Select the printer you want to use. Click **Next**. When the Add print wizard complete screen appears, click **Finish**.



TIP

- If you use IPP printing, you will need to configure your proxy server setting to print via the Internet.



Printing NetBEUI/NetBIOS over TCP/IP

This section explains how to print using NetBEUI/NetBIOS over TCP/IP.



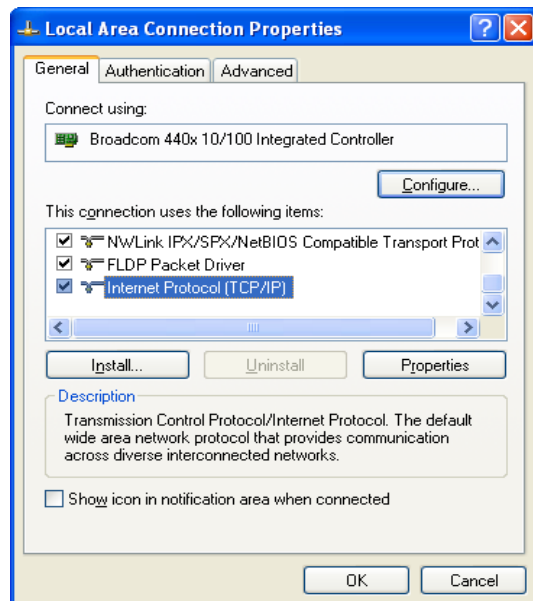
- Be sure to install the printer driver you want to use in your PC, before these procedues.
- The following example uses Windows XP. The screens will vary between operating systems.

Verify the Network Configuration on Windows PC

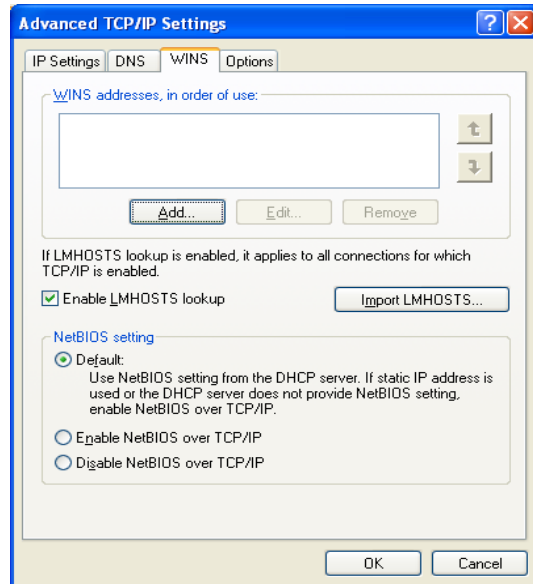
Verify that NetBIOS and **Microsoft network client** have been added.

1. Select **Start - Control Panel - Network and Internet Connections - Network Connection.**

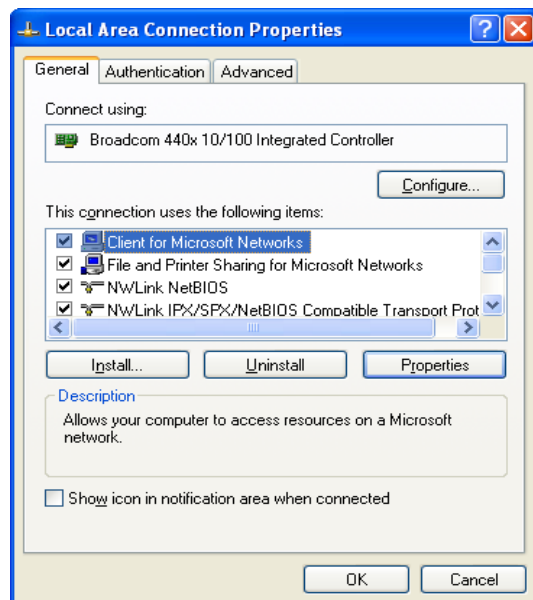
2. Open **Local Area Property** and select **Internet protocol(TCP/IP)** , click **Property**.



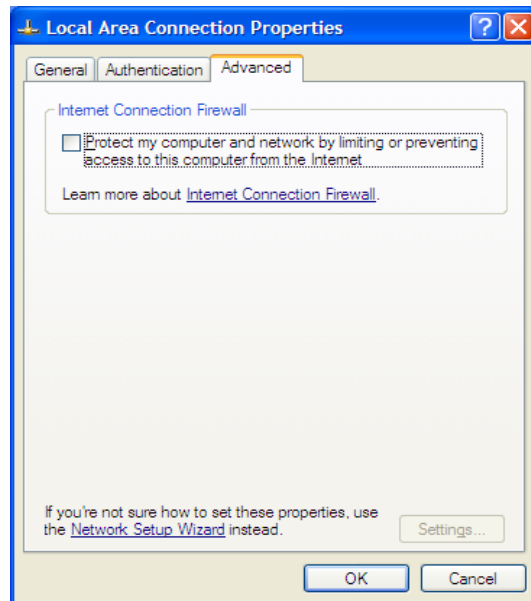
3. Open **Advanced.. - WINS**. Verify the that **Default** or **Enable NetBIOS over TCP/IP** has been selected.



4. Verify that **Client Microsoft Networks** is installed.



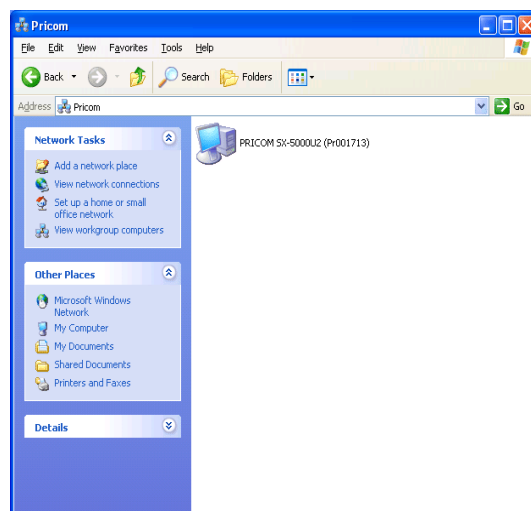
5. Uncheck **Protect my computer and network by limiting or preventing access to this computer from the internet** in Advanced.



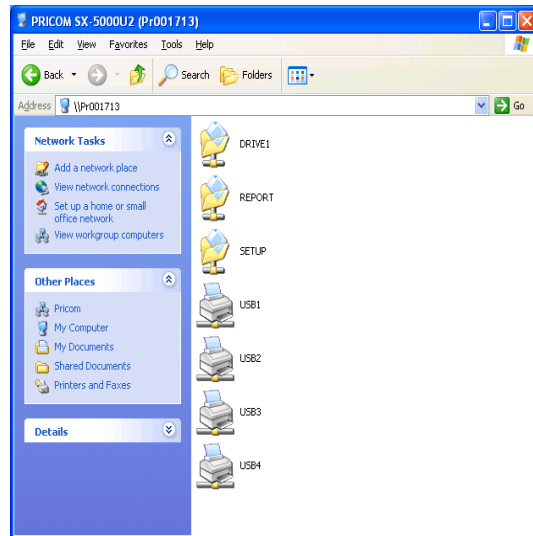
Print Setting

1. Select **My Network - Display workgroup computer - Microsoft Windows Network -** and then open the workgroup **Pricom**.

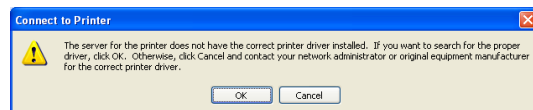
2. Double click this product's icon.



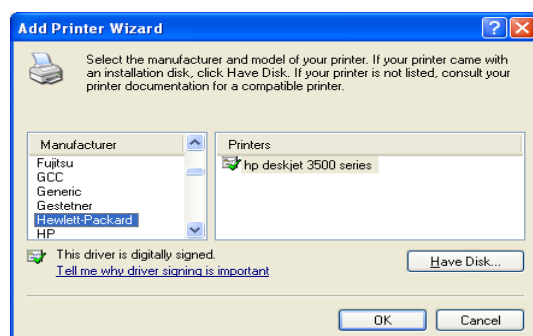
3. Double click the printer icon.



4. Click **OK**.



5. Add Printer wizard will appear, Follow the instructions to add printer. If a test print page successfully, completes.



The NetBEU/NetBIOS over TCP/IP for printing configuration is completed.

Configuring via a Web Browser

This section explains how to access this product's web page by using a web browser. This product server has HTTP which enables you to check or change the configuration as well as checking the device status.

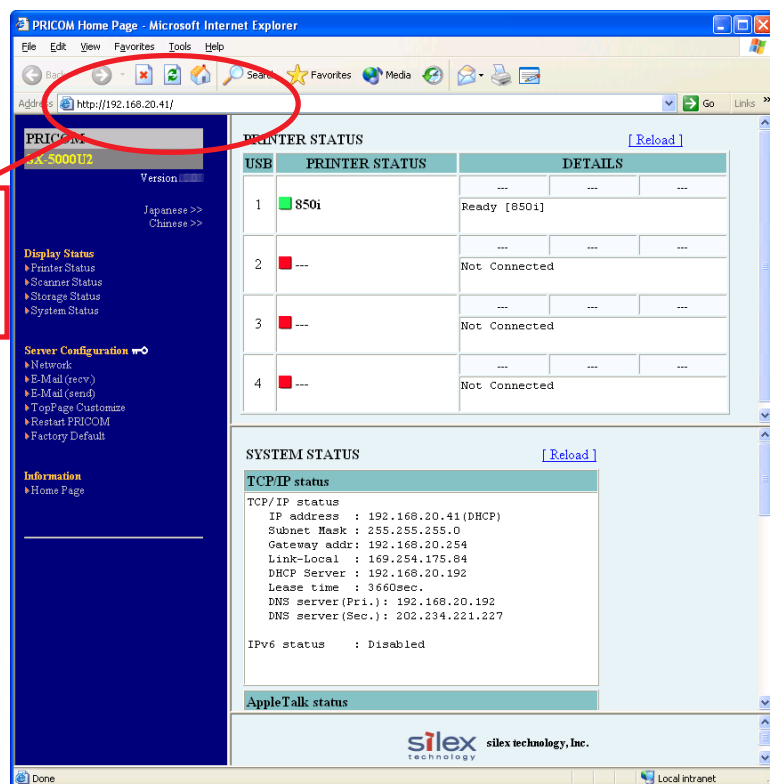


- IP address must be assigned to this product prior to accessing the web page.
- The web browser cannot be used for the initial configuration.

Connect to the This Product

To connect to this product, start a web browser, and input the IP address of this product.

If this product was assigned "192.168.20.45", enter [http://192.168.20.45/]



- Internet Explorer 3.0 and Netscape Navigator3.0 or newer are recommended.
- When you use other browsers, it must support HTTP1.0 (RFC1945) and HTML2.0 (RFC1866).
- The actual screens may vary from the examples in this manual between different web browsers you use.

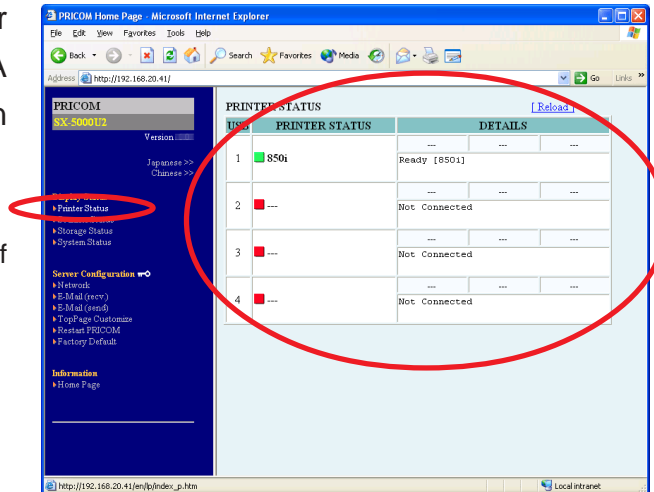
This Product HTTP Screens

<Print Status>

The printer information for a printer connected to this product is displayed. A printer name and the status information of a printer are displayed.

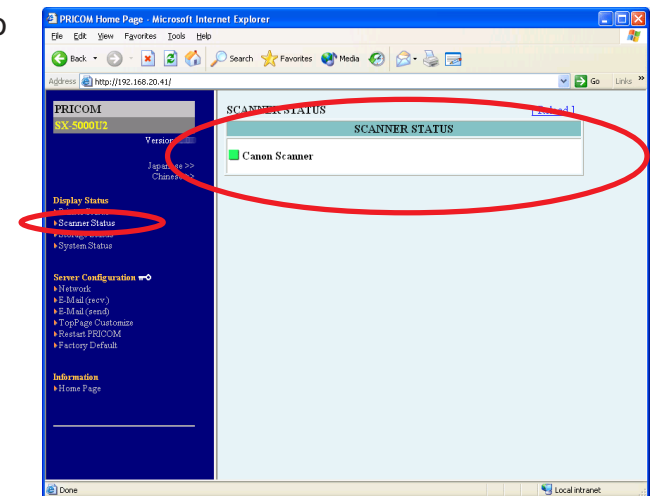


- This screen will display the status of the printers attached.



<Scanner Status>

The name of the scanner connected to this product is displayed.

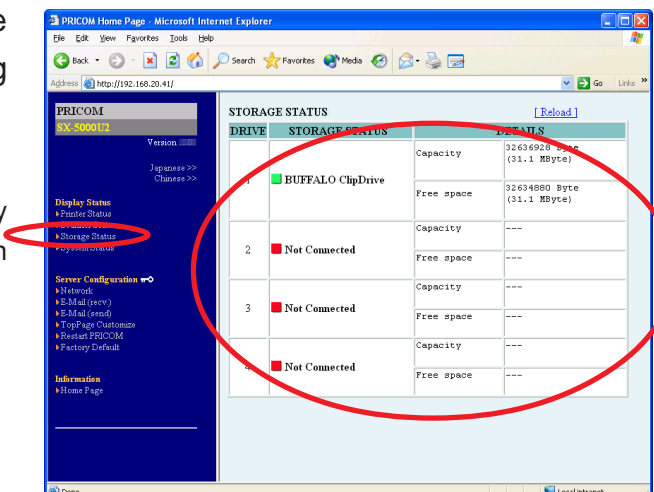


<Storage Status>

The name of USB storage device connected to this product, operating capacity, and availability are displayed.

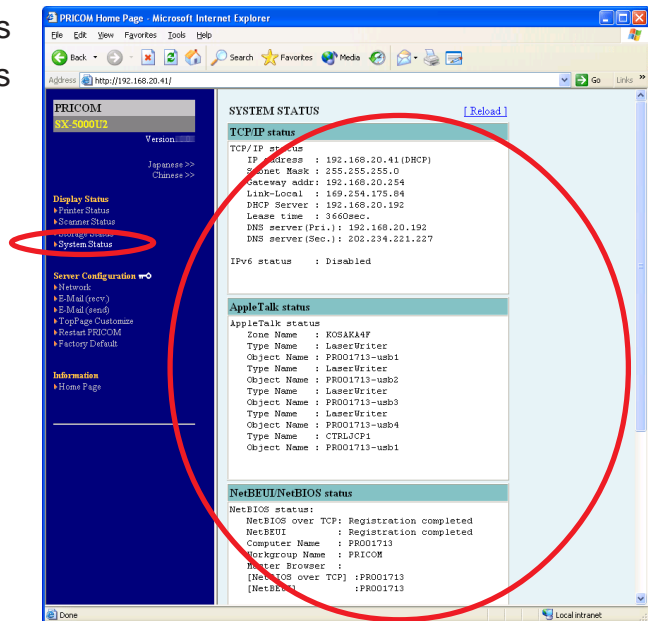


- A USB storage device must be directly connected to the PRICOM USB port in order for the status to be displayed.



<System Status>

This screen displays the status information and configuration for this product.

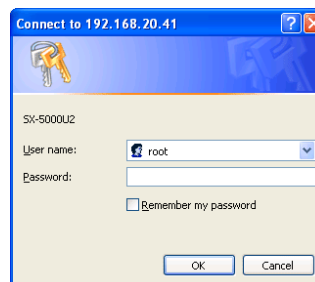
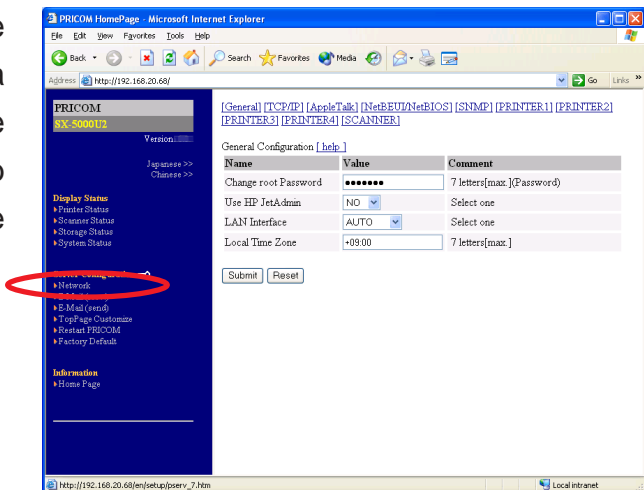


<Network>

It is possible to change the configuration of this product by using a web browser. When changing the configuration of this product from a web browser, a user name and password are required.

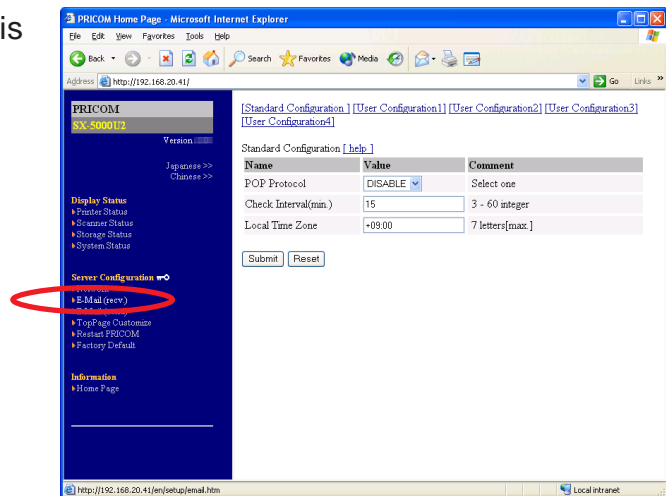


- Input **root** for the username then OK or enter the password if you have created one. The default is no password.



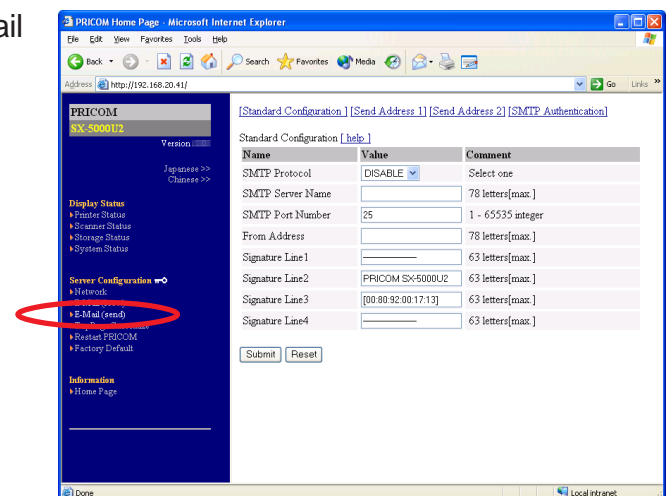
<E-Mail(recv.)>

The E-Mail retrieving function of this product can be configured.



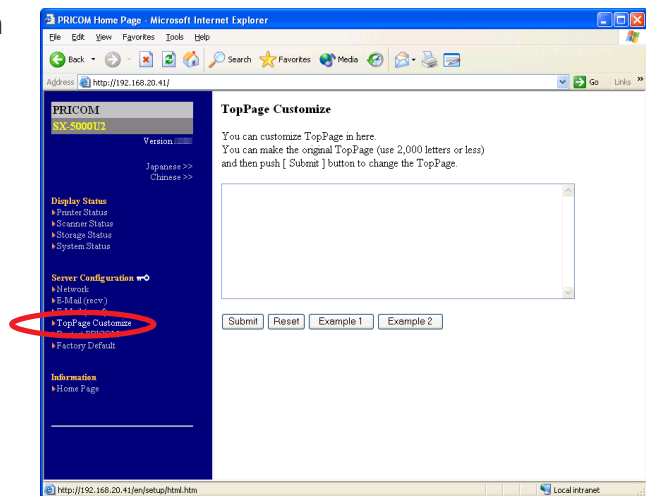
<E-Mail(send)>

This page is used to change the E-Mail transmitting (SMTP) configuration.



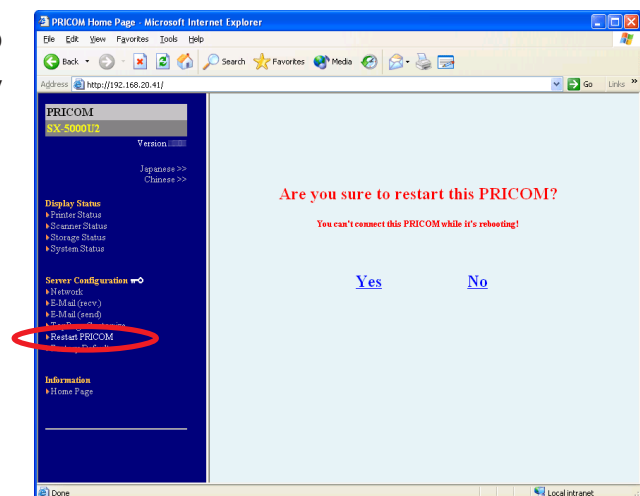
<TopPage Customize>

The top web screen of this product can be modified here.



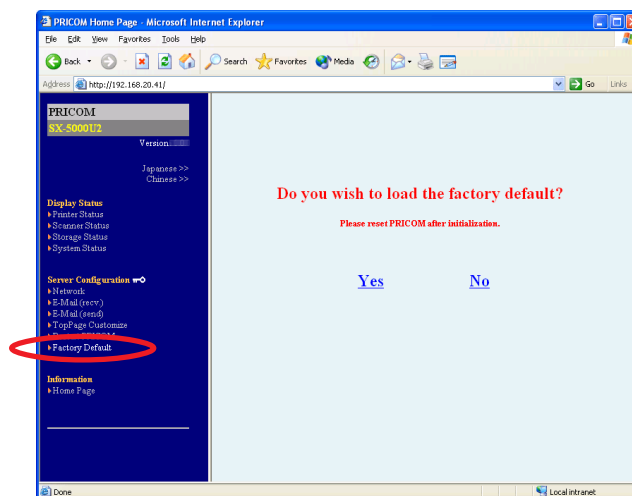
<Restart PRICOM>

This product can be reset from the web browser. This product is rebooted by choosing **Yes** on the reboot screen.



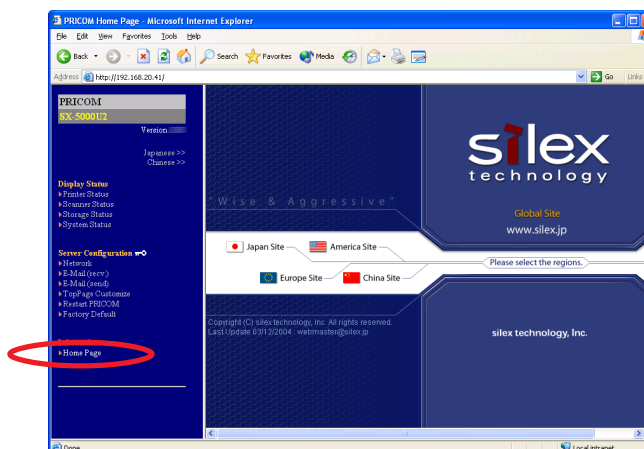
<Factory Default>

This product can be restored to factory defaults via the web browser. By choosing **Yes** on the initialization screen this product will be initialized to the factory default settings.



<Home Page>

The silex technology web page can be linked and from this product. If you have questions about our product please refer to our web page.



Telnet

Once this product has been assigned an IP address, it can be configured using Telnet. The Telnet configuration is menu driven. An example of each menu screen is displayed below:



- In order to change the configuration, it is necessary to login. Use root for the login name. This product does not have a password by default. If a password has been assigned you must enter the password.

Telnet login example

```
PRICOM SX-5000U2 Ver x.x.x TELNET server.
Copyright (C) 2004 silex technology, Inc.
login: root
'root' user needs password to login.
password:
User 'root' logged in.
```

No.	Item	Value	(level.1)
1	Configure General		
2	Configure TCP/IP		
3	Configure AppleTalk		
4	Configure NetBEUI/NetBIOS		
5	Configure SNMP		
6	Configure Print Port		
7	Configure Scanner Port		
96	Display Status		
97	Reset Settings to Defaults		
98	Restart PRICOM		
99	Exit		

Please select(1 - 99)?

General Configuration [1] example

No.	Item	Value	(level.2)
1	: Change root Password	: "*****"	
2	: Use HP JetAdmin	: NO	
3	: LAN Interface	: AUTO	
4	: Local Time Zone	: "+09:00"	
99	: Back to prior menu		

Please select(1 - 99)?

Configure TCP/IP [2] example

No.	Item	Value	(level.2)
1	: TCP/IP Protocol	: ENABLE	
2	: DHCP/BOOTP	: ENABLE	
3	: RARP	: ENABLE	
4	: IP Address	: 0.0.0.0	
5	: Subnet Mask	: 0.0.0.0	
6	: Default Gateway	: 0.0.0.0	
7	: IPv6 Function	: DISABLE	
8	: DNS		
9	: POP		
10	: SMTP		
11	: WINS		
12	: IP Filter Configuration		
13	: Raw Mode Configuration		
14	: Rendezvous Configuration		
15	: NetworkPnP Enable	: ENABLE	
99	: Back to prior menu		

Please select(1 - 99)?

DNS [2-8] example

No.	Item	Value	(level.3)
1	: Primary Server	: 0.0.0.0	
2	: Secondary Server	: 0.0.0.0	
99	: Back to prior menu		

Please select(1 - 99)?

POP [2-9] example

No.	Item	Value	(level.3)
1	: POP Protocol	: DISABLE	
2	: Check Interval(min.)	: 15	
3	: Local Time Zone	: "+09:00"	
4	: User Profile 1		
5	: User Profile 2		
6	: User Profile 3		
7	: User Profile 4		
99	: Back to prior menu		

Please select(1 - 99)?

User Profile 1 [2-9-4] example

No.	Item	Value	(level.4)
1	: User Profile	: DISABLE	
2	: POP Server Name	: ""	
3	: POP Port Number	: 110	
4	: POP User Name	: ""	
5	: POP Password	: "*****"	
6	: Use APOP	: NO	
7	: Delete Mail after Retrieve	: NO	
8	: Maximum Retrieve(KByte)	: 64	
9	: Filter Setting	: ""	
99	: Back to prior menu		

Please select(1 - 99)?

User Profile 2 [2-9-5] example

No.	Item	Value	(level.4)
1	User Profile	: DISABLE	
2	POP Server Name	: ""	
3	POP Port Number	: 110	
4	POP User Name	: ""	
5	POP Password	: "*****"	
6	Use APOP	: NO	
7	Delete Mail after Retrieve	: NO	
8	Maximum Retrieve(KByte)	: 64	
9	Filter Setting	: ""	
99	Back to prior menu		

Please select(1 - 99)?

User Profile 3 [2-9-6] example

No.	Item	Value	(level.4)
1	User Profile	: DISABLE	
2	POP Server Name	: ""	
3	POP Port Number	: 110	
4	POP User Name	: ""	
5	POP Password	: "*****"	
6	Use APOP	: NO	
7	Delete Mail after Retrieve	: NO	
8	Maximum Retrieve(KByte)	: 64	
9	Filter Setting	: ""	
99	Back to prior menu		

Please select(1 - 99)?

User Profile 4 [2-9-7] example

No.	Item	Value	(level.4)
1	User Profile	: DISABLE	
2	POP Server Name	: ""	
3	POP Port Number	: 110	
4	POP User Name	: ""	
5	POP Password	: "*****"	
6	Use APOP	: NO	
7	Delete Mail after Retrieve	: NO	
8	Maximum Retrieve(KByte)	: 64	
9	Filter Setting	: ""	
99	Back to prior menu		

Please select(1 - 99)?

SMTP [2-10] example

No.	Item	Value	(level.3)
1	SMTP Protocol	: DISABLE	
2	SMTP Server Name	: ""	
3	From Address	: ""	
4	Event to Address1		
5	Event to Address2		
6	Advanced		
7	SMTP Authentication		
99	Back to prior menu		

Please select(1 - 99)?

Event to Address 1 [2-10-4] example

No.	Item	Value	(level.4)
1	To Address	: ""	
2	Check Interval(min.)	: 10	
3	Offline	: OFF	
4	Paper Empty	: OFF	
5	Fault	: OFF	
99	Back to prior menu		

Please select(1 - 99)?

Event to Address 2 [2-10-5] example

No.	Item	Value	(level.4)
1	To Address	:	" "
2	Check Interval(min.)	:	10
3	Offline	:	OFF
4	Paper Empty	:	OFF
5	Fault	:	OFF
99	Back to prior menu		

Please select(1 - 99)?

Advanced [2-10-6] example

No.	Item	Value	(level.4)
1	SMTP Port Number	:	25
2	Signature Line1	:	"-----"
3	Signature Line2	:	"PRICOM SX-5000U2"
4	Signature Line3	:	"[00:80:92:00:16:E7]"
5	Signature Line4	:	"-----"
99	Back to prior menu		

Please select(1 - 99)?

SMTP Authenticaon [2-10-7] example

No.	Item	Value	(level.4)
1	SMTP AUTH Enable	:	DISABLE
2	SMTP AUTH Name	:	" "
3	SMTP AUTH Password	:	"*****"
99	Back to prior menu		

Please select(1 - 99)?

WINS [2-11] example

No.	Item	Value	(level.3)
1	: Primary Server	: 0.0.0.0	
2	: Secondary Server	: 0.0.0.0	
3	: Scope ID	: ""	
99	: Back to prior menu		

Please select(1 - 99)?

IP Filter Configuration [2-12] example

No.	Item	Value	(level.3)
1	: Filter Mode	: DENY	
2	: Filter #0 Start Address	: 0.0.0.0	
3	: Filter #0 End Address	: 0.0.0.0	
4	: Filter #1 Start Address	: 0.0.0.0	
5	: Filter #1 End Address	: 0.0.0.0	
6	: Filter #2 Start Address	: 0.0.0.0	
7	: Filter #2 End Address	: 0.0.0.0	
8	: Filter #3 Start Address	: 0.0.0.0	
9	: Filter #3 End Address	: 0.0.0.0	
99	: Back to prior menu		

Please select(1 - 99)?

Raw Mode Configuration [2-13] example

No.	Item	Value	(level.3)
1	: PORT1 Raw Mode Port No	: 9100	
2	: PORT1 Bi-Directional mode	: DISABLE	
3	: PORT2 Raw Mode Port No	: 9101	
4	: PORT2 Bi-Directional mode	: DISABLE	
5	: PORT3 Raw Mode Port No	: 9102	
6	: PORT3 Bi-Directional mode	: DISABLE	
7	: PORT4 Raw Mode Port No	: 9103	
8	: PORT4 Bi-Directional mode	: DISABLE	
99	: Back to prior menu		

Please select(1 - 99)?

Rendezvous Configuration [2-14] example

No.	Item	Value	(level.3)
1	Rendezvous Enable	: ENABLE	
2	Rendezvous Name	: "RDV0016E7"	
99	Back to prior menu		

Please select(1 - 99)?

Network PnP Enable [2-15] example

NetworkPnP Enable

1	: ENABLE
2	: DISABLE

Please select(1 - 2)?

Configure AppleTalk [3] example

No.	Item	Value	(level.2)
1	AppleTalk Protocol	: ENABLE	
2	Zone Name	: ""	
3	PORT1 Printer Name	: "PR0016E7-usb1"	
4	PORT1 PostScript Mode	: ASCII	
5	PORT1 PS Bi-Directional Mode	: ENABLE	
6	PORT2 Printer Name	: "PR0016E7-usb2"	
7	PORT2 PostScript Mode	: ASCII	
8	PORT2 PS Bi-Directional Mode	: ENABLE	
9	PORT3 Printer Name	: "PR0016E7-usb3"	
10	PORT3 PostScript Mode	: ASCII	
11	PORT3 PS Bi-Directional Mode	: ENABLE	
12	PORT4 Printer Name	: "PR0016E7-usb4"	
13	PORT4 PostScript Mode	: ASCII	
14	PORT4 PS Bi-Directional Mode	: ENABLE	
99	Back to prior menu		

Please select(1 - 99)?

Configure NetBEUI/NetBIOS [4] example

No.	Item	Value	(level.2)
1	NetBEUI Protocol	: ENABLE	
2	NetBIOS over TCP	: ENABLE	
3	Computer Name	: "PR0016E7"	
4	Workgroup	: "tokyo7f"	
5	Comment	: "PRICOM SX-5000U2"	
6	Browse Master	: ENABLE	
99	Back to prior menu		

Please select(1 - 99)?

Configure SNMP [5] example

No.	Item	Value	(level.2)
1	Authentic Community	: "*****"	
2	Trap Community	: "public"	
3	Trap Address(IP)	: 0.0.0.0	
4	SysContact	: ""	
5	SysName	: ""	
6	SysLocation	: ""	
7	EnableAuthenTrap	: 2	
99	Back to prior menu		

Please select(1 - 99)?

Configure Print Port [6] example

No.	Item	Value	(level.2)
1	Configure PORT1 Print Port		
2	Configure PORT2 Print Port		
3	Configure PORT3 Print Port		
4	Configure PORT4 Print Port		
99	Back to prior menu		

Please select(1 - 99)?

Configure PORT1 Print Port [6-1] example

No.	Item	Value	(level.3)
1	: BOJ String	: ""	
2	: EOJ String	: ""	
3	: BOJ String (sjis/euc)	: ""	
4	: EOJ String (sjis/euc)	: ""	
5	: Printer Emulation	: ASCII	
6	: Tab Size (char.)	: 8	
7	: Page Width (char.)	: 0	
8	: Page Length (char.)	: 0	
9	: Avoid shortpacket	: DISABLE	
10	: Not execute GET_PORT_STATUS	: DISABLE	
99	: Back to prior menu		

Please select(1 - 99)?

Configure PORT2 Print Port [6-2] example

No.	Item	Value	(level.3)
1	: BOJ String	: ""	
2	: EOJ String	: ""	
3	: BOJ String (sjis/euc)	: ""	
4	: EOJ String (sjis/euc)	: ""	
5	: Printer Emulation	: ASCII	
6	: Tab Size (char.)	: 8	
7	: Page Width (char.)	: 0	
8	: Page Length (char.)	: 0	
9	: Avoid shortpacket	: DISABLE	
10	: Not execute GET_PORT_STATUS	: DISABLE	
99	: Back to prior menu		

Please select(1 - 99)?

Configure PORT3 Print Port [6-3] example

No.	Item	Value	(level.3)
1	: BOJ String	: ""	
2	: EOJ String	: ""	
3	: BOJ String (sjis/euc)	: ""	
4	: EOJ String (sjis/euc)	: ""	
5	: Printer Emulation	: ASCII	
6	: Tab Size (char.)	: 8	
7	: Page Width (char.)	: 0	
8	: Page Length (char.)	: 0	
9	: Avoid shortpacket	: DISABLE	
10	: Not execute GET_PORT_STATUS	: DISABLE	
99	: Back to prior menu		

Please select(1 - 99)?

Configure PORT4 Print Port [6-4] example

No.	Item	Value	(level.3)
1	: BOJ String	: ""	
2	: EOJ String	: ""	
3	: BOJ String (sjis/euc)	: ""	
4	: EOJ String (sjis/euc)	: ""	
5	: Printer Emulation	: ASCII	
6	: Tab Size (char.)	: 8	
7	: Page Width (char.)	: 0	
8	: Page Length (char.)	: 0	
9	: Avoid shortpacket	: DISABLE	
10	: Not execute GET_PORT_STATUS	: DISABLE	
99	: Back to prior menu		

Please select(1 - 99)?

Configure Scanner Port [7] example

No.	Item	Value	(level.2)
1	: Automatically disconnect Time	: 10	
99	: Back to prior menu		

Please select(1 - 99)?

Display Status [96] example

No.	Item	Value	(level.2)

1	:	Printer Status	
2	:	Scanner Status	
3	:	Storage Status	
4	:	System Status	
99	:	Back to prior menu	

Printer Status [96-1] example

Printer Status

```

1 : usb1
2 : usb2
3 : usb3
4 : usb4
99 : Back to prior menu
Please select(1 - 99)?

```

USB1 [96-1-1] example

```

usb1 :
Ready [i850]

```

Scanner Status [96-2] example

Scanner Status

```

1 : scn1
99 : Back to prior menu
Please select(1 - 99)?

```

scn1 [96-2-1] example

```

scn1 :
Canon Scanner

```



NOTE

- Above USB1 example and scn1 example are when a printer and a scanner are connected.

Storage Status [96-3] example

Storage Status

1 : DRIVE1

2 : DRIVE2

3 : DRIVE3

4 : DRIVE4

99 : Back to prior menu

Please select(1 - 99)?

DRIVE [96-3-1] example

DRIVE1 :

BUFFALO ClipDrive



NOTE

- Above Drive example is when a storage is connected.

system [96-4] example

SX-5000U2 Version 1.0.0

TCP/IP status

```
IP address   : 192.168.85.113
Subnet Mask  : 255.255.255.0
Gateway addr: 0.0.0.0
Link-Local   : 169.254.78.201
DNS server(Pri.): 0.0.0.0
DNS server(Sec.): 0.0.0.0
```

IPv6 status : Disabled

AppleTalk status

```
Zone Name      : Backbone
Type Name      : LaserWriter
Object Name    : PR0016E7-usb1
Type Name      : LaserWriter
Object Name    : PR0016E7-usb2
Type Name      : LaserWriter
Object Name    : PR0016E7-usb3
Type Name      : LaserWriter
Object Name    : PR0016E7-usb4
Type Name      : CTRLJCP1
Object Name    : PR0016E7-usb1
```

NetBIOS status:

```
NetBIOS over TCP: Registration completed
NetBEUI          : Registration completed
Computer Name    : PR0016E7
Workgroup Name   : PRICOM
Master Browser   :
[NetBIOS over TCP] :PR0016E7
[NetBEUI]         :PR0016E7
```

E-MAIL status

Session:1 times.

All profiles are disabled.

SMTP status:Disabled

Exit [99] example

Exit

- 1 : Save and Restart
- 2 : Save and Exit
- 3 : Exit without Saving
- 99 : Back to prior menu

Please select(1 - 99)?

Configuration Settings

This section explains the configuration settings of PRIOCM SX-5000U2.

General Setup

Item	Explanation	Initial value (factory default)
Change root Password	A root password is specified	Nothing (no password)
Use HP JetAdmin	Specify whether or not to use JetAdmin	NO
LAN Interface	LAN interface is selected	AUTO
Local Time Zone	A local time zone is specified	"+09:00"

TCP/IP Setup

Item	Explanation	Initial value (factory default)
TCP/IP Protocol	Enable or disable the TCP/IP Protocol	ENABLE
DHCP/BOOTP	Enable or disable DHCP/BOOTP	ENABLE
RARP	Enable or disable RARP	ENABLE
IP Address	Enter an IP address	0.0.0.0
Subnet Mask	Enter a Subnet Mask	0.0.0.0
Default Gateway	Enter a Default Gateway	0.0.0.0
IPv6 Function	Enable IPv6 if you use IPv6	DISABLE
Network PnP Enable	Enable or disable Network PnP	ENABLE

DNS Setup

Item	Explanation	Initial value (factory default)
Primary Server	Specify the Primary Server's IP address	0.0.0.0
Secondary Server	Specify the Secondary Server's IP address	0.0.0.0

WINS Setup

Item	Explanation	Initial value (factory default)
Primary Server	Specify the Primary Server's IP address.	0.0.0.0
Secondary Server	Specify the Secondary Server's IP address	0.0.0.0
Scope ID	Specify the Scope ID	Blank

IP Filter Setup

Item	Explanation	Initial value (factory default)
Filter Mode	Accept or deny access for the specified addresses	DENY
Filter #0 Start Address	Specify the filter start address	0.0.0.0
Filter #0 End Address	Specify the filter end address	0.0.0.0
Filter #1 Start Address	Specify the filter end address	0.0.0.0
Filter #1 End Address	Specify the filter end address	0.0.0.0
Filter #2 Start Address	Specify the filter end address	0.0.0.0
Filter #2 End Address	Specify the filter end address	0.0.0.0
Filter #3 Start Address	Specify the filter end address	0.0.0.0
Filter #3 End Address	Specify the filter end address	0.0.0.0

Raw mode printing Setup

Item	Explanation	Initial value (factory default)
PORT1 Raw Mode No	Specify the port number	9100
PORT1 Bi-Directional mode	Enable or disable Bi-Directional printing	DISABLE
PORT2 Raw Mode No	Specify the port number	9101
PORT2 Bi-Directional mode	Enable or disable Bi-Directional printing	DISABLE
PORT3 Raw Mode No	Specify the port number	9102
PORT3 Bi-Directional mode	Enable or disable Bi-Directional printing	DISABLE
PORT4 Raw Mode No	Specify the port number	9103
PORT4 Bi-Directional mode	Enable or disable Bi-Directional printing	DISABLE

Rendezvous Setup

Item	Explanation	Initial value (factory default)
Rendezvous Enable	Select Enable to use Rendezvous	ENABLE
Rendezvous Name	Specify a Rendezvous name	"RDVxxxxxx" (xxxxxx is the last 6 figures of the Ethernet address)

AppleTalk Setup

Item	Explanation	Initial value (factory default)
AppleTalk Protocol	Enable or disable the AppleTalk Protocol	ENABLE
Zone Name	Specify a Zone Name	(*)(the default zone is used)
PORT1 Printer Name	Specify a Printer Name	"PRxxxxxx-usb1" (xxxxxx is the last 6 figures of the Ethernet address)
PORT1 PostScript Mode	Specify the PostScript mode	ASCII
PORT1 PS Bi-Directional Mode	Enable or disable Bi-Directional printing	ENABLE
PORT2 Printer Name	Specify a Printer Name	"PRxxxxxx-usb2" (xxxxxx is the last 6 figures of the Ethernet address)
PORT2 PostScript Mode	Specify the PostScript mode	ASCII
PORT2 PS Bi-Directional Mode	Enable or disable Bi-Directional printing	ENABLE
PORT3 Printer Name	Specify a Printer Name	"PRxxxxxx-usb3" (xxxxxx is the last 6 figures of the Ethernet address)
PORT3 PostScript Mode	Specify the PostScript mode	ASCII
PORT3 PS Bi-Directional Mode	Enable or disable Bi-Directional printing	ENABLE
PORT4 Printer Name	Specify a Printer Name	"PRxxxxxx-usb4" (xxxxxx is the last 6 figures of the Ethernet address)
PORT4 PostScript Mode	Specify the PostScript mode	ASCII
PORT4 PS Bi-Directional Mode	Enable or disable Bi-Directional printing	ENABLE

NetBEUI/NetBIOS Setup

Item	Explanation	Initial value (factory default)
NetBEUI Protocol	Enable or disable the NetBEUI Protocol	ENABLE
NetBIOS over TCP	Enable or disable the NetBIOS Protocol	ENABLE
Computer Name	Specify the computer share name	"PRxxxxxx" (xxxxxx is the last 6 figures of the Ethernet address)
Workgroup	Specify the Workgroup name	"PRICOM"
Comment	Enter a comment	"PRICOM SX-5000U2"
Browse Master	Enable or disable a browsing master	ENABLE

SNMP Setup

Item	Explanation	Initial value (factory default)
Authentic Community	Specify the Authentic Community	"public"
Trap Community	Specify the Trap Community	"public"
Trap Address (IP)	Specify the Trap IP address	0.0.0.0
SysContact	Specify a system Contact	Blank
SysName	Specify a system Name	Blank
SysLocation	Specify a system Location	Blank
Enable Authentic Trap	Enable or disable Authentic trap	2

Printer Port Setup

Item	Explanation	Initial value (factory default)
BOJ String	Specify the character sequence added to the head of the printing data	Blank
EOJ String	Specify the character sequence added to the end of the printing data	Blank
BOJ String(sjis/euc)	Specify the character sequence added to the head of the printing data (sjis/euc)	Blank
EOJ String(sjis/euc)	Specify the character sequence added to the end of the printing data (sjis/euc)	∅
Printer Emulation	Configure to correspond with the emulation of the printer (PDL). The emulation will be converted to a code that corresponds to the printer emulation in outputting to the output port via Kanji filter (sjis/euc).	ASCII
TAB Size(char.)	Specify the number of characters to convert the tab code (0x09) to half size (single-byte) space (0x20) in outputting via a Kanji filter. When the value is 0, the tab is not converted. The value is from 0 to 16.	8
Page Width(char.)	Specify the number of characters in a line when outputting via Kanji filter. The value is from 0 to 255.	0
Page Length(char.)	Specify the number of lines on a page when outputting via Kanji filter. The value is from 0 to 255.	0
Device Name	The device linked to this port is set up.	Blank
Avoid shortpacket	Specify if short packets are acceptable on the LAN	DISABLE
Not execute GET_PORT_STATUS	Allow or disallow status acquisition	DISABLE

Scanner Port Setup

Item	Explanation	Initial value (factory default)
Automatically disconnect Time	Specify idle time of the scanner that is connected via PRICOM USB Utility until automatic disconnection. Setting value is between 0 and 60. Automatic disconnection is not executed if setting is 0.	10

POP(E-Mail transmission) Basic Setup

Item	Explanation	Initial value (factory default)
POP Protocol	Enable/Disable POP protocol operations. If operation is Disabled, the e-mail RECEIVE function will be not available.	DISABLE
Check Interval (min.)	Set the interval for querying the mail server for the arrival of e-mail in the e-mail receiving function in units of minutes.	15
Local Time Zone	Set the time zone. If used in Japan, the value is "+09:00"	" +09:00"

POP User Profile Setup

Item	Explanation	Initial value (factory default)
User Profile	Enable/Disable mail retrieval function for individual user.	DISABLE
POP Server Name	Specify the mail server's host name or IP address. When domain name is used, it is necessary to configure the DNS server.	Blank
POP Port Number	Set the number of the POP port. Usually the value should be the default (110).	110
POP User Name	Set the login name (user name) of the mail account.	Blank
POP Password	Set the password to be used when connecting to the mail server.	Blank
Use APOP	Enable/ Disable APOP setting at server. In order to use APOP, it is necessary that the mail server supports APOP.	NO
Delete Mail after Retrieve	The excluded E-mail is not deleted even if the item of "Delete Mail after Retrieval" is checked.	NO
Maximum Retrieve (Kbyte)	E-mails with a size larger than specified are excluded from being processed.If you set "0", the size is not limited.	64
Filter Setting	Using filters, set to print only specified mail. When null (empty string: default) is set, all e-mail is printed. Configure filters by means of strings connected by "OR"("I") or "AND"("&") and featuring four kinds of the items: "Subject" ("S:string"), "To Address" ("T:string"), "Carbon Copy" ("C:string") and "From Address" ("F:string").	Blank
Printer Name	Specify the printer to print the received email.	Blank

SMTP(E-Mail transmission) Basic Setup

Item	Explanation	Initial value (factory default)
SMTP Protocol	Enable or disable SMTP	DISABLE
SMTP Server Name	Specify A SMTP server name	None
From Address	This will be the from address in the e-mail	None

SMTP Address Setup

Item	Explanation	Initial value (factory default)
To Address	Address where e-mail is sent	Blank
Check Interval(min.)	How often the e-mail will be sent	10
Offline	Send message when the printer is offline	OFF
Paper Empty	Send message when the printer is out of paper	OFF
Fault	Send message when the printer has an error	OFF

SMTP Setup

Item	Explanation	Initial value (factory default)
SMTP Port Number	Specify the SMTP port number	25
Signature Line1	A Signature is specified	-----
Signature Line2	A Signature is specified	PRICOM SX-5000U2
Signature Line3	A Signature is specified	[(Ethernet Address)]
Signature Line4	A Signature is specified	-----

SMTP Authentication Setup

Item	Explanation	Initial value (factory default)
SMTP AUTH ENABLE	Enable or disable SMTP authentication	DISABLE
SMTP AUTH Name	Specify a SMTP user name	blank
SMTP AUTH Password	Specify a SMTP password	blank

User Registration

For future technical support, we recommend you register with us as a user on-line at:

Global Site; <http://www.silex.jp/register/>

USA Site; <http://www.silexamerica.com/us/regist/index.html>

EU Site; <http://www.silexeurope.de/euro/regist/index.html>