

Serial Device Server SX-520 Setup Guide

Thank you for purchasing the Serial Device Server, SX-520.
This Setup Guide provides information on how to set up and use SX-520.

English

silex
technology



Package Contents

The following items are included in SX-520 package.

- ☐ SX-520
- ☐ Wireless LAN antenna
- ☐ AC adaptor
- ☐ CD-ROM (Serial Device Server Setup CD)
- ☐ Setup Guide (this document)
- ☐ Warranty Booklet

Setup Procedure

The following is the procedure to setup SX-520.

Step 1 Before You Begin

Prepare the items and information that will be necessary to setup SX-520.

Step 2 Power on

Power on SX-520.

Step 3 Setup

Configure the network settings of SX-520.

Step 4 Install Application

Install a necessary application to your PC.

Step 5 Link to Serial Device

Link to your serial device.

* This Setup Guide shows the setup process using a wired network. If you wish to setup SX-520 wirelessly, refer to the online manual that is included in the CD-ROM.

Step 1 Before You Begin

Necessary Items

The following items are required in order to use SX-520.

Network Cable

Connect SX-520 to a wired LAN.

* In a 100BASE-TX network, a network cable supporting 100BASE-TX (category 5 or above) is required.

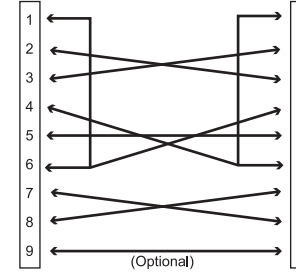
* Even if you wish to use SX-520 on a wireless network, we recommend that you setup SX-520 using a wired network, since configuration based on a wired network is much easier. If you still prefer to setup SX-520 wirelessly (without a network cable), refer to the online manual that is included in the CD-ROM.

Serial Cable

PIN Assignment

Pin	Details
1	DCD(Data Carrier Direct) Input
2	RxD(Receive Data) Input
3	TxD(Transmit Data) Output
4	DTR(Data Terminal Ready) Output
5	Ground
6	DSR(Data Set Ready) Input
7	RTS(Request To Send) Output
8	CTS(Clear To Send) Input
9	RI(Ring Indicate) Input or +5 VDC Power Input (Optional)

Cable Wiring



Wireless LAN Settings

Collect the information such as wireless mode, SSID, encryption mode, encryption key, etc. of your wireless network.

* If you will use SX-520 in a wired network after finishing the setup, you do not have to collect these information.

Step 2 Power On

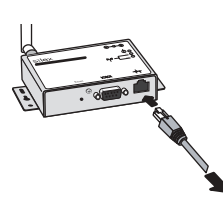
Before you install SX-520

Please take a note of the Ethernet Address that is written on back side of SX-520. The Ethernet Address will be used in the setup. Also, it is required when you contact our customer support center as well as the user registration via our home page.

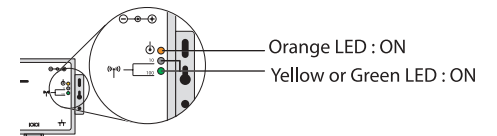
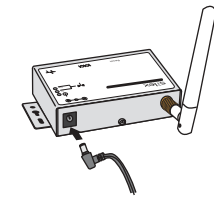
1. Connect a network cable to SX-520 and the other end to an Ethernet Hub or PC.

2. Connect an AC adaptor to SX-520 and power plug to an outlet.

3. Verify the Orange LED (Power Status LED) turns on and either Green LED (Network Status LED) or Yellow LED (Network Status LED) turns on.



To Ethernet HUB

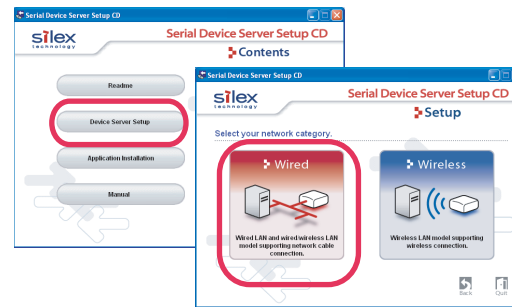


Step 3 Setup

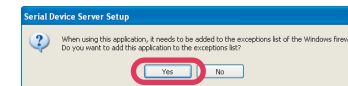
If using a firewall function of commercial security software, disable the firewall function while configuring SX-520.

1. Insert the **Serial Device Server Setup CD** into your PC.

2. Click **Device Server Setup** and then click **Wired**.

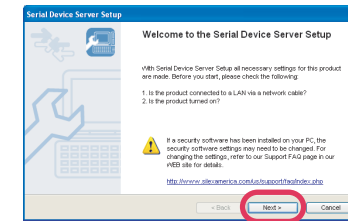


* In Windows XP (SP2 or higher), the message below will be displayed. Click **Yes**.

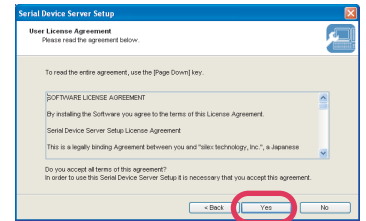


* In Windows Vista, the User Account Control screen is displayed. Click **Continue**.

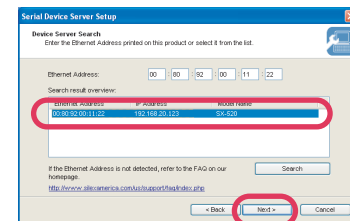
3. The Serial Device Server Setup screen is displayed. Click **Next**.



4. Read the **SOFTWARE LICENSE AGREEMENT** and click **Yes**.

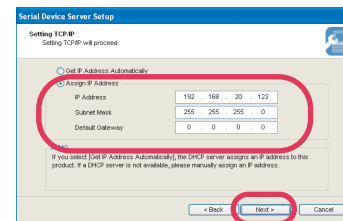


5. Select SX-520 that you wish to setup and click **Next**.



* If SX-520 is not displayed in the list, check the network settings (IP address) on your PC.

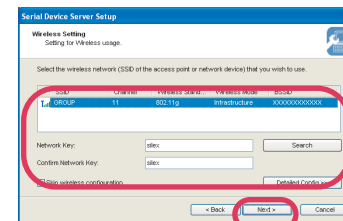
6. Configure the TCP/IP settings. Select **Assign IP Address** and enter an IP address. Click **Next**.



* The IP address used in this screen is a sample address. Please enter an IP address appropriate for your environment.

* To obtain an IP address automatically from DHCP server, select **Get IP Address Automatically**.

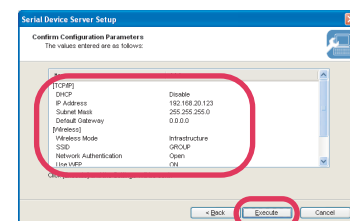
7. If you will use SX-520 wirelessly, select the wireless network that you wish to use from the list, enter the wireless network key and click **Next**.



* Configure the wireless settings appropriate for your network. If you are unsure of what values to set, contact your network administrator.

* If you will use SX-520 on a wired network upon completing the setup, check **Skip wireless configuration** and click **Next**.

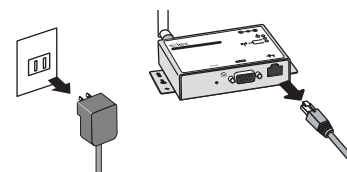
8. Check the settings and click **Execute**.



9. Click **Yes** and then click **Finish**.

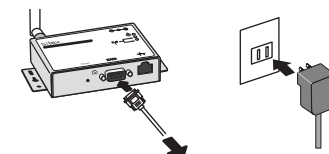


10. Unplug the AC adaptor from the outlet and network cable from SX-520 for these settings to take effect.



* If you will use SX-520 in a wired LAN, you do not have to unplug the network cable.

11. Connect the serial device that you wish to share over the network to SX-520 using a serial cable and insert the power plug of SX-520 into the outlet.



To Serial Device

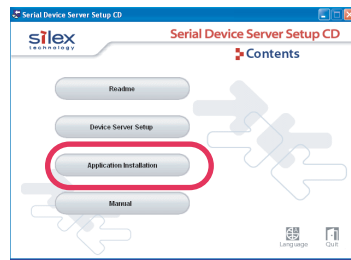
The setup is complete.
Go on to **Step 4** for application installation.

Step4 Install Application

If you have completed the setup and continue to install application from **Step3**, start from "3".

1. Insert the **Serial Device Server Setup CD** into your PC.

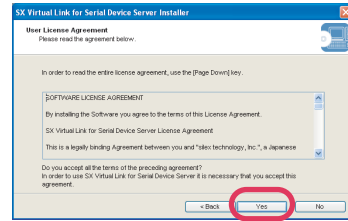
2. Click **Application Installation**.



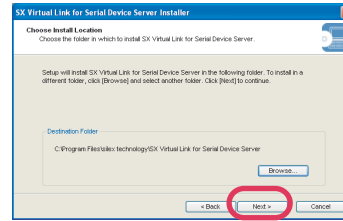
3. SX Virtual Link for Serial Device Server Install wizard is displayed. Click **Next**.



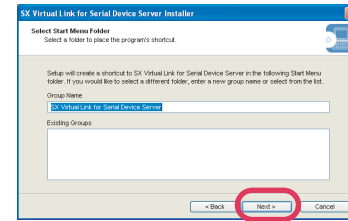
4. Read the **SOFTWARE LICENSE AGREEMENT** and click **Yes**.



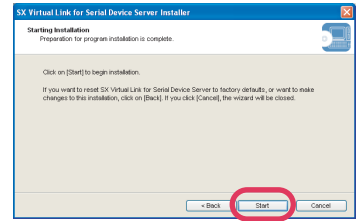
5. Select a folder to install into and click **Next**.



6. Enter a Group Name to be displayed in the Start Menu. Click **Next**.



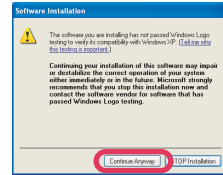
7. Click **Start** to begin the installation.



8. A confirmation message for software installation is displayed.

<< In Windows XP >>

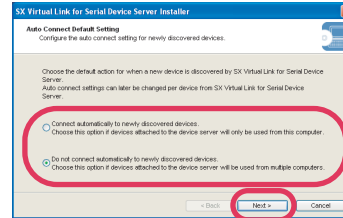
Click **Continue Anyway**.



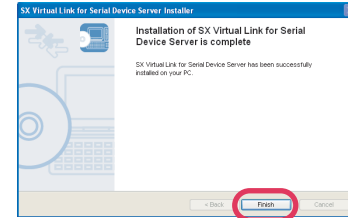
* In Windows XP (SP2 or higher), the message below is displayed. Click **Yes**.



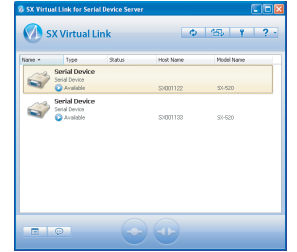
9. Select an appropriate action that you wish to take when a new serial device is discovered and click **Next**.



10. The completion screen is displayed. Click **Finish**.

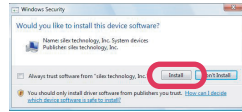


Application installation is complete. SX Virtual Link for Serial Device Server will run.

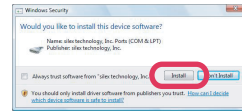


<< In Windows Vista >>

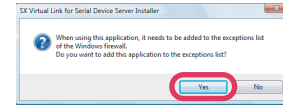
- (1) Windows Security message is displayed. Click **Install**.



- (2) Again, click **Install**.



- (3) When the message below is displayed, click **Yes**.




Step5 Link to Serial Device

SX-520 supports 4 communication modes to link to a serial device as shown below:

This Setup Guide shows how to make a link to serial device using SX Virtual Link for Serial Device Server.


For details on other communication modes, refer to the online manual included in the CD-ROM.

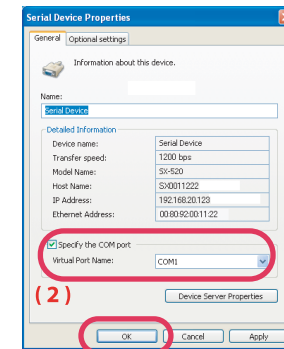
5-1 Start SX Virtual Link for Serial Device Server

Click the icon  in the task tray or click **Start - All Programs - SX Virtual Link for Serial Device Server - SX Virtual Link for Serial Device Server**.

5-2 Link to a serial device

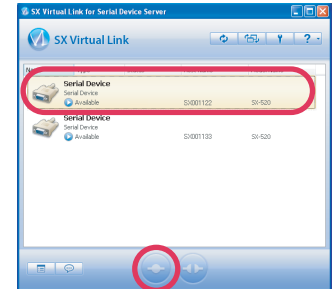
* To specify the COM port manually, please complete the following steps before you link to serial device.

- (1) Select the serial device that you wish to link and click **Properties** button .
- (2) In the **General** tab, check **Specify the COM port** check box and select the COM port that you wish to use from **Virtual Port Name**. (Please do not select the one that is already used in your system.)
- (3) Click **OK**.



(3)

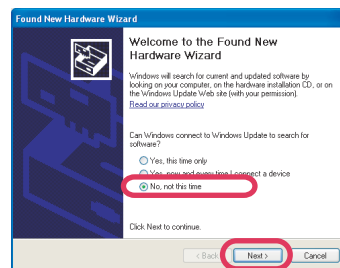
1. Select SX-520 in SX Virtual Link for Serial Device Server's main window and click **Connect** button .



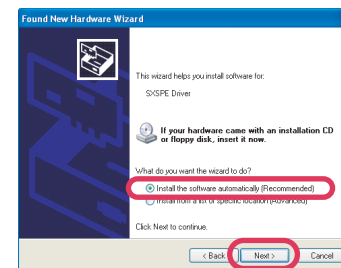
2. Once you successfully link to the serial device, the status icon is changed in SX Virtual Link for Serial Device Server's main window. The COM port that you have selected is displayed in the status column.

* If **Found New Hardware Wizard** is displayed, install software for the device according to the followings:

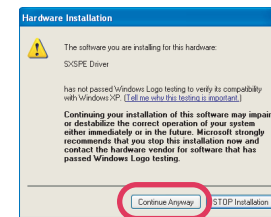
- (1) Select **No, not this time** and click **Next**.



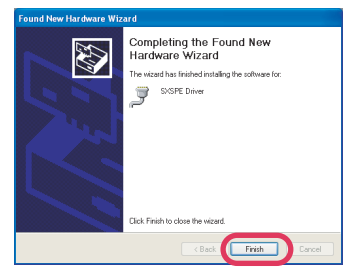
- (2) Select **Install the software automatically (Recommended)** and click **Next**.



- (3) Click **Continue Anyway**.



- (4) Click **Finish**.



5-3 Start a serial communication software


1. Start a serial communication software such as a terminal software, etc.

2. On the serial communication software, select the COM port that is displayed in the status column of SX Virtual Link for Serial Device Server's main window.

* Also, configure the serial port settings such as a baud rate, stop bit, etc. on serial communication software.

Once the communication settings is complete, you can communicate with the serial device connected to SX-520.

5-4 Unlink from a serial device

1. Close the serial communication software.
2. Select SX-520 in SX Virtual Link for Serial Device Server's main window and click **Disconnect** button .

Customer Support

USA : silex technology america, Inc.
E-mail : support@silexamerica.com
URL : http://www.silexamerica.com/
Phone : +1-866-765-8761

Europe : silex technology europe GmbH
E-mail : support@silexeurope.com
URL : http://www.silexeurope.com/
Phone : +49(0)2151-65009-0