

May 2005

StitchLink Setup Guide

For JANOME
For PFAFF



WA02040XA

Vol.1

silex technology, Inc.
www.silex.jp

Thank you for purchasing our StitchLink adaptor.
This setup guide provides information on how to configure
and use this product.

- Safety instructions are noted in the manual. Please read the instructions carefully before using this product to ensure safe and proper use.
- This setup guide is specific to the below configuration. If you are using a different configuration, please refer to the user manual or contact silex technical support.
- Wireless PC to StitchLink communication (not using a wireless access point/router)
- Windows XP Professional Service Pack 2
- Janome or PFAFF Sewing Machine
- There are three methods to use StitchLink:
 - Direct wireless PC to StitchLink (referred to as Ad-Hoc mode in this document)
 - "Wireless PC" to Wireless Access Point/Router to StitchLink (referred to as Infrastructure mode in this document)
 - "Wired PC" to Wireless Access Point/Router to StitchLink (please contact silex technical support.)

Preparation

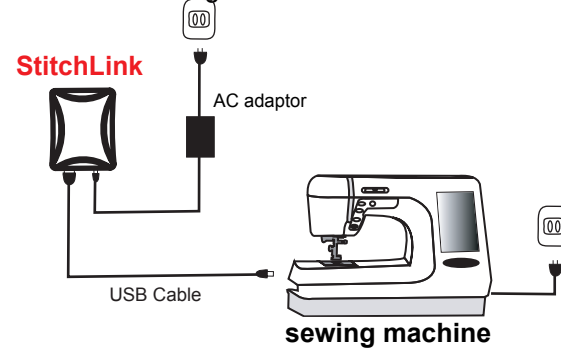
Remove the following items from the package:

- StitchLink
- AC Adaptor
- Setup Guide (this document)
- CD-ROM (StitchLink Setup CD)
- USB Cable
- Warranty Book

Please confirm that you have either a wireless PC (embedded wireless or external wireless USB adaptor) or a wireless access point/router. Finally, confirm that your PC is using either Windows 2000 or some version of Windows XP.

Step1 Connect the StitchLink to the Sewing Machine

- A** With the sewing machine turned off, connect the USB cable from the StitchLink to the sewing machine USB port.
- B** Connect the AC adaptor to the StitchLink.
- C** Plug the AC adaptor into an electrical outlet.
- D** Turn on the sewing machine.



Option1 If Using a Wireless PC to a Wireless Access Point/Router

Note: If you are communicating directly from a PC to StitchLink, please skip to Step2.

A Check existing PC wireless settings.

- Left click on the **Wireless Network** icon in the task tray displayed on the bottom right of the desktop.
- Left click on **Properties**.
- Left click on the **Wireless Networks** tab.
- Your existing wireless network should be highlighted. Left click on **Properties** and write down the following:
 - Network name (SSID): *Note - Case sensitive*

- Note if the Data encryption is set to Disabled or WEP. If WEP, you will need to know your WEP Key.
※ Please write the settings if WEP is Enabled

WEP Key: _____ (Enabled or Disabled)

- Left click **OK** twice in both windows to return to the Wireless Network Connection Status window.

B Check existing PC TCP/IP address.

- Left click the **Support** tab.
- Write down the Address Type, IP Address, Subnet Mask and Default Gateway. Close window.

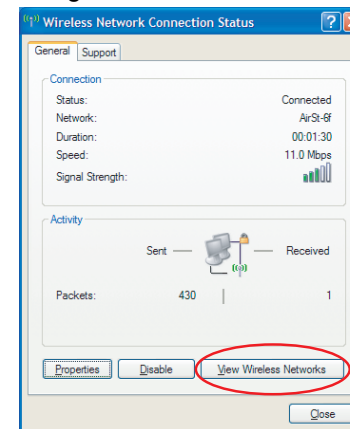
IP Address : _____

Subnet Mask: _____

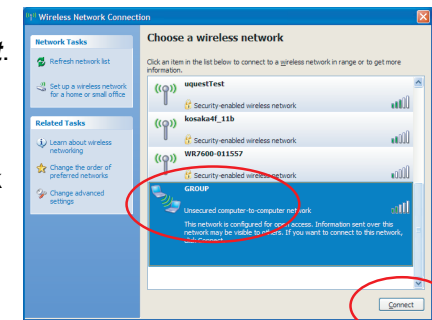
Default Gateway: _____

Step2 Establishing a PC to StitchLink Wireless Connection

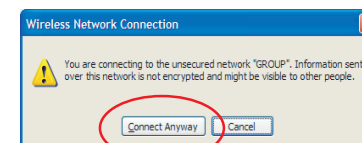
- A** Verify that the power of the StitchLink is turned on ("link" LED should be green).
- B** Left click on the **Wireless Network** icon in the task tray displayed on the bottom right of the desktop.
- C** Left click on **View Wireless Networks** to see all Wireless Networks in range.



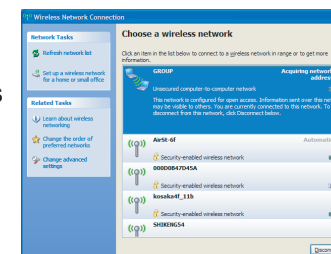
- D** Left click **GROUP** and then left click **Connect**. This will connect you to the StitchLink. Sometimes it is not necessary to click **Connect** as it may be already connected.



- E** You may get a message to confirm connection to a unsecured network. If so, left click **Connect Anyway**.

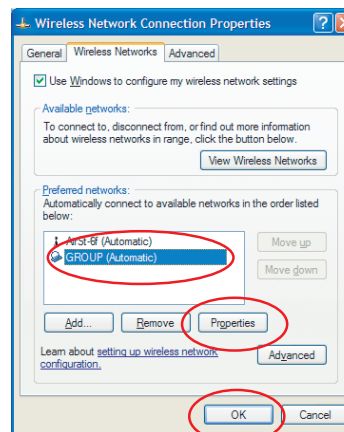


- F** After approximately 45 seconds, you will be connected. Close the Wireless Network Connection window. The connection procedure is complete.



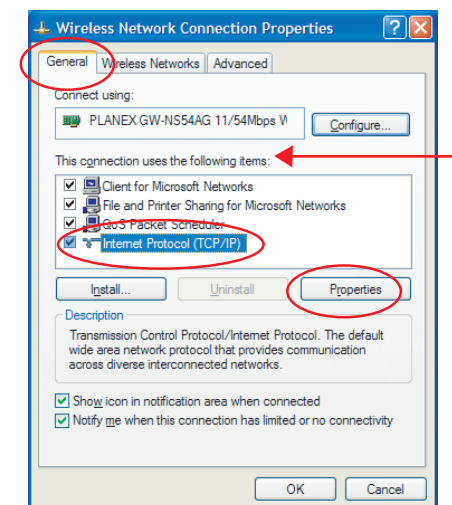
Step3 Assign IP Address to Your PC. This IP address will be used to configure the StitchLink.

- A** Go to the **Wireless Network** icon of Wireless Network Connection Properties.
- Right click on the **Wireless Network** icon in the bottom task tray.
 - Left click on **Open Network Connections**.
 - Double left click on **Wireless Network Connection**.
 - Left click on **Properties**.
 - Left click on the **Wireless Networks** tab.
- B** Designate GROUP as the preferred network.
- If GROUP is highlighted, go to next step.
 - If GROUP is not highlighted:
 - Left click on **GROUP**.
 - Left click on **Properties**.
 - Left click on **OK**.



C Assign IP Address

- Left click on the **General** tab.
- Scroll down in the **This connection uses the following items:** box and left click on **Internet Protocol (TCP/IP)**.
- Left click on **Properties**.



- Enter an IP address to be used by this PC during the installation process.

Note: If you are unsure of what address to use, please use the IP address in the following example.

- Left click next to the **Use the following IP address** and enter the below IP address and subnet mask.

Step3 continued >

Step3 cont.

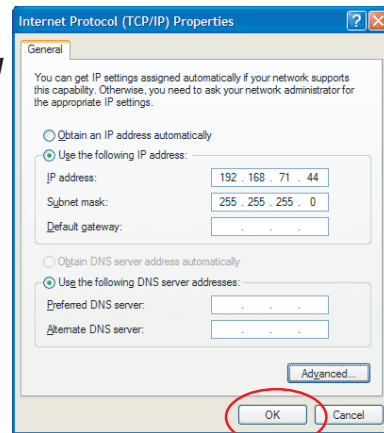
b. Select **Use the following IP Address** and enter the following:

- IP Address:
192.168.71.44
- Subnet Mask :
255.255.255.0

c. Left click on **OK** to exit the Internet Protocol (TCP/IP) Properties screen.

d. Left click on **OK** to save the changes to Wireless Network Connection Properties and then close your network connections window.

e. Left click **Close**.



Step4 stitchLink Initial Setup

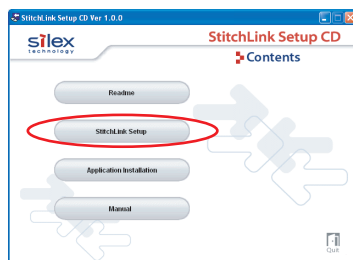
A

If a security software has been installed on your PC, temporarily disable the firewall function of your security software.

Install the StitchLink Setup CD into the CD-ROM drive of your PC. If the installation menu does not appear, do the following:

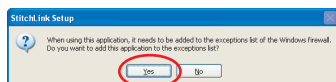
- Left click **Start** on the bottom left corner of your screen.
- Left click **Run** to open F:\Autorun.exe (the letter associated with your CD-ROM drive may be different - i.e. F:\).
- Left click **Browse**.
- Double left click **Autorun**.
- Left click **OK** to run autorun.exe.

B



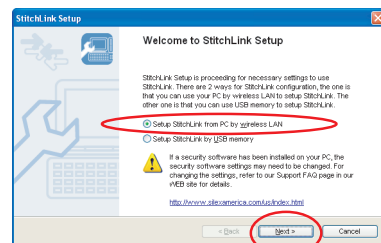
Left click **StitchLink Setup**.

C



A new window may appear that asks if the application needs to be added to the exceptions list of the Windows firewall. Left click **Yes**.

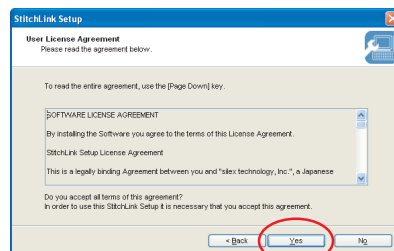
D



Select **Setup StitchLink from PC by wireless LAN** and left click **Next**.

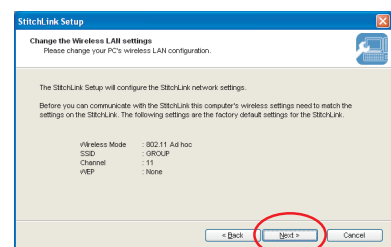
Please refer to the manual for instructions on how to setup using a USB memory device.

E



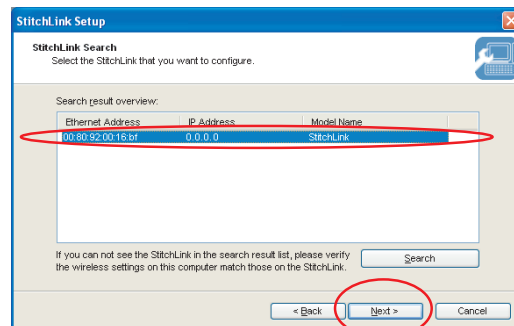
Please read the "User License Agreement". If you agree, left click **Yes** to the User License Agreement.

F



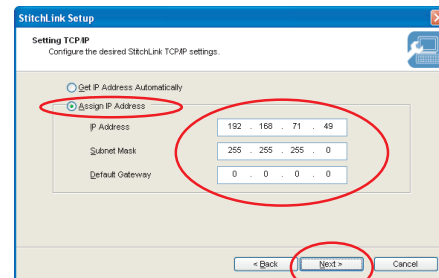
Left click **Next** to the "Change the Wireless LAN settings".

G



Left click on the StitchLink model name to be configured. Then left click **Next**. If StitchLink does not appear, left click on the **Search** button.

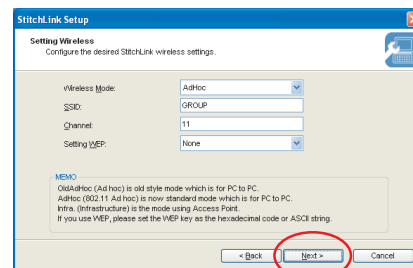
H



Select **Assign IP Address** and enter the following:

- If you are communicating directly from a PC to StitchLink, enter the following:
 - IP Address : **192.168.71.49**
 - Subnet Mask : **255.255.255.0**
- If you are using the "Option1 Wireless PC to Wireless Access Point/Router" to StitchLink, enter the following:
 - Select **Assign IP Address**.
 - Enter an IP address where the first three (3) set of numbers are identical to the PC IP address from "Option1". The last set of numbers must be different from any other IP addresses on your network.
 - Enter the same subnet mask as your PC from "Option1".
 - Enter the same default gateway address as your PC from "Option1".
- Left click **Next**.

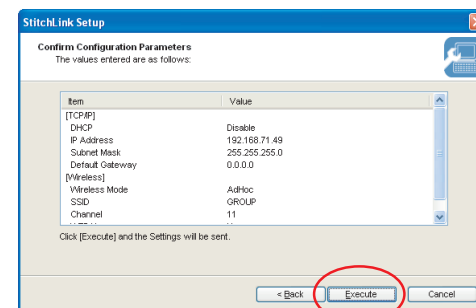
I



Configure the StitchLink wireless settings.

- If you are communicating directly from a PC to StitchLink, enter the following:
 - Change **Wireless Mode** to **AdHoc**.
 - Type **GROUP** as the SSID (Group must be capitalized).
 - Left click **Next**.
- If you are using a the "Option1 Wireless Access Point/Router", enter the following:
 - Change Wireless Mode to **Infra**.
 - Enter the SSID from "Option1" (Note that the SSID is case sensitive).
 - Enter your WEP configuration if applicable.
- Left click **Next**.

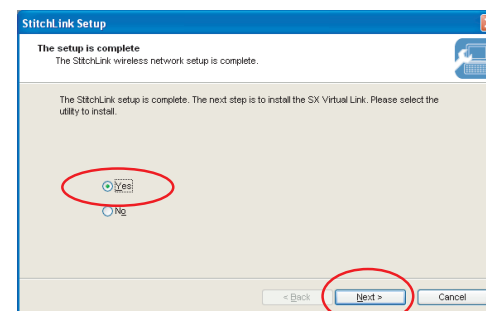
J



Left click **Execute** to Confirm Configuration Parameters.

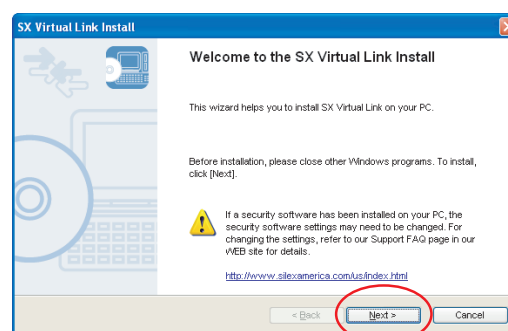
Step5 Install the SX Virtual Link

A



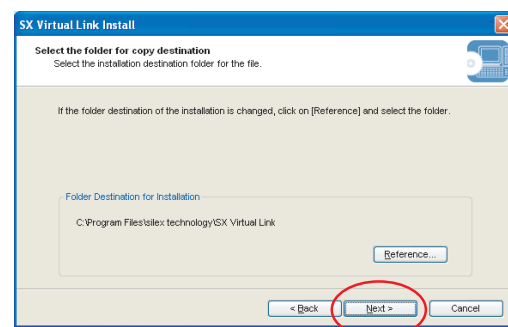
Select **Yes** and left click **Next** to install the SX Virtual Link.

B



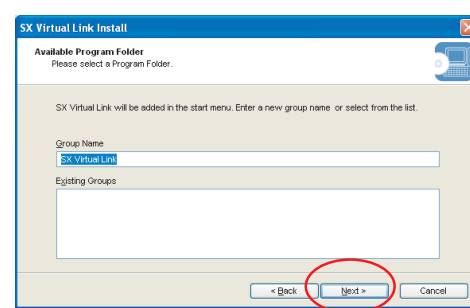
Left click **Next**.

C



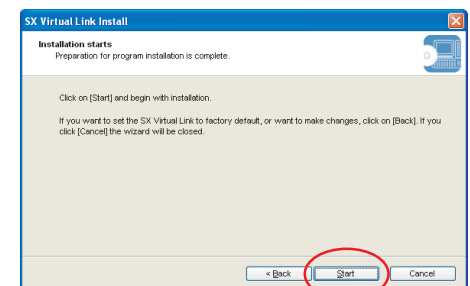
Left click **Next**.

D



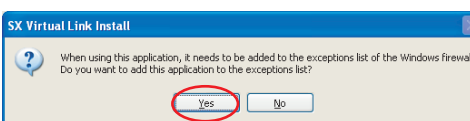
Left click **Next**.

E



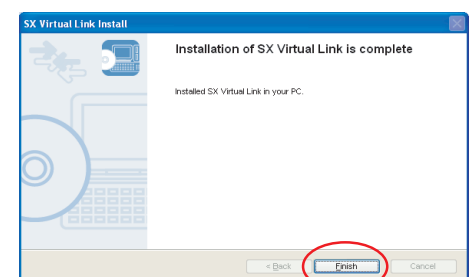
Left click **Start**.

F



Left click **Yes**.

G



Left click **Finish** in the next to windows and close the StitchLink Setup CD window by clicking **Quit**. Click **Yes** to "Is it ok to finish".

StitchLink Setup Guide

For JANOME

For PFAFF

Vol.2



silex technology, Inc.
www.silex.jp

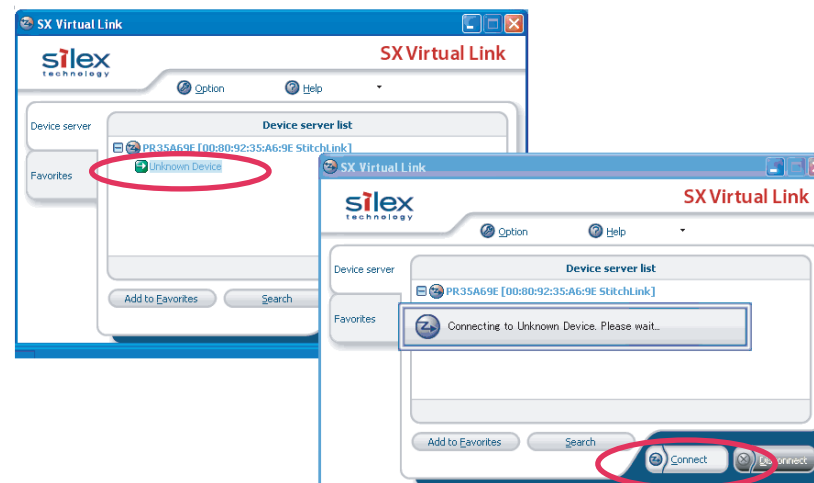
Option2 Setting the PC and StitchLink to Infrastructure Mode

Note: If you are communicating directly from a PC to StitchLink, please skip to Step6.

- A** Left click on the **Wireless Network** icon in the bottom task tray.
- B** Left click on **Properties**.
- C** Scroll down in the "This connection uses the following items:" box and left click on **Internet Protocol (TCP/IP)**.
- D** Left click on **Properties** and return settings to original status from step 2 (if the address type is DHCP, select **Obtain an IP address automatically** and you will not need to enter the IP address and Subnet Mask).
- E** Left click **OK** in the next window to Internet Protocol (TCP/IP) Properties.
- F** Left click **OK** in the next window to Wireless Network Connection Status.
- G** Left click **View Wireless Networks**.
- H** Left click the "SSID" of your wireless network, left click **Connect** and close the window.

Step6 Using the Sewing Machine

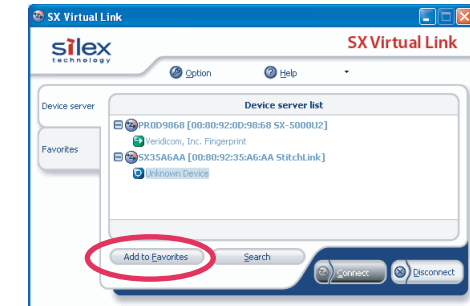
- A** Load the sewing machine software containing the sewing machine driver (Customizer, Digitizer, etc.). Refer to the sewing machine manual for installation instructions.
- B** Open SX Virtual Link Application.
 - i. Left click the **Start** on the bottom left corner of your screen.
 - ii. Left click **All Programs**.
 - iii. Move the cursor to the SX Virtual Link and left click on the **SX Virtual Link** that appears on the right to open the program.
- C** Select the USB Sewing Machine.
 - i. StitchLink should be listed in the "Device server list". If not, please left click **Search**.
 - ii. Click the [+] next to StitchLink to display the sewing machine. An unknown device should be displayed.
 - iii. Left click on the **Unknown Device** and left click on **Connect**.
 - iv. Insert the sewing machine CD containing the sewing machine driver. The "Found New Hardware Wizard" window will be displayed. Left click **Next**.
 - v. Left click **Finish** to complete the "Found New Hardware Wizard".
 - vi. The sewing machine will be connected once the status icon next to the Unknown Device has changed to " ". If not, please left click **Search**. To change the name of the device, refer to the StitchLink manual.
 - vii. Open your sewing machine software application as if you have a direct USB cable connection. You should have all the same functionally wirelessly as if you were directly connected to the sewing machine.



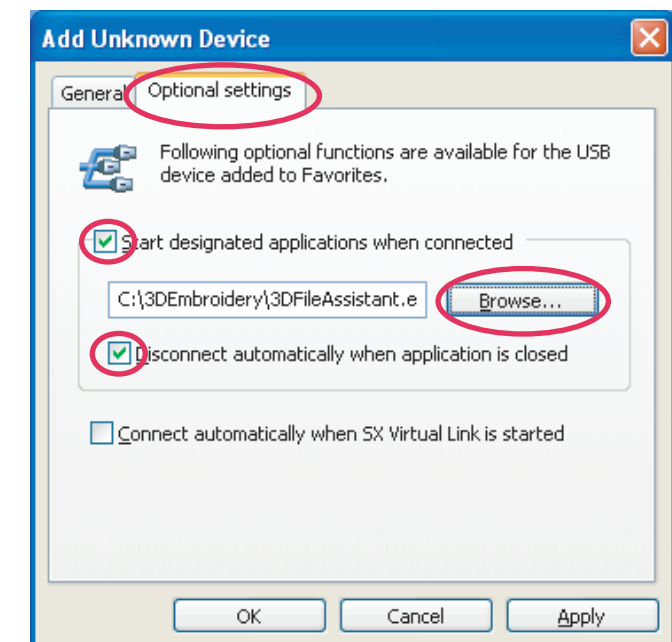
- D** Recommended for PFAFF sewing machines

Using these highly-recommended connection options will launch the PFAFF software automatically when you connect in the SX Virtual Link and disconnect automatically when you close the PFAFF software.

- i. From the SX Virtual Link window, left-click on **Add to Favorites**.



- ii. Go to the "Optional Settings" tab.
 - a. Check the boxes for "Start designated applications when connected" and "Disconnect automatically when application is closed."
 - b. Click **Browse** to select the sewing machine software. (It will have an ".exe" extension.)
 - c. Click **OK**.

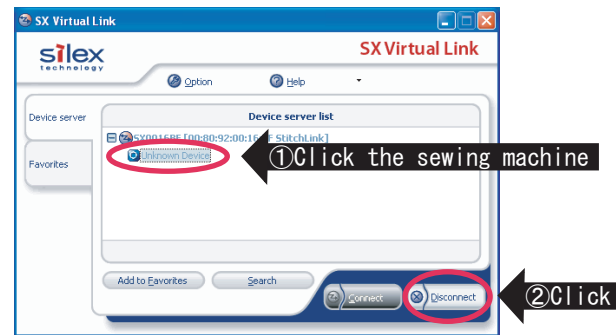



NOTE: In the event that you choose not to set these configurations, please be sure to close the PFAFF software *before* disconnecting in the SX Virtual Link utility. Disconnecting from the SX Virtual Link utility while the PFAFF software is running may create a situation where you will not be able to reconnect. If this situation occurs, please reboot the PC, StitchLink, and the sewing machine to allow the communication to be reset.

Caution: Wireless communication can be subject to interference and may cause a disruption in communication between the sewing machine and the PC. If this were to occur, you may need to reboot the PC, StitchLink, and the sewing machine to allow communication to be reset.

Step7 Disconnect When Not Using Sewing Machine

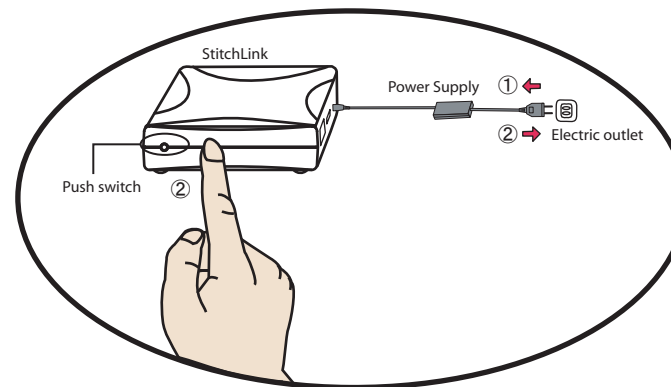
A In the SX Virtual Link application, click on the Sewing Machine (unknown device unless renamed) and click on **Disconnect**.



One personal computer can connect with each sewing machine.
When the sewing machine is in use by another PC, the status icon, "  " is displayed indicating the sewing machine cannot be connected.

To reset to the factory default setting

1. Remove the AC plug from the electric outlet ①.
2. Push and hold the push switch while re-inserting the AC plug into the electric outlet ②. Continue holding.
3. The "STATUS" LED (Orange) will light when the factory default configuration settings have been restored. Release the push switch.
4. Unplug the AC plug and re-insert the AC plug into the electric outlet.



User Registration

Make sure to fill out the User Registration via our web page after completing setup. User Registration is recommended in order to provide you better product support and service.

- For User Registration

<http://www.silex.jp/register/>

- Customer Support

USA : silex technology america, Inc.

E-mail : support@silexamerica.com

URL : <http://www.silexamerica.com/>

Phone : 1-866-765-8761