

# X-5HM

## Wireless Multi-zone Digital Signage Player



Reliable Wireless Set-top Box for Advertising and Information Display

### Overview:

The Silex X-5HM is a digital signage player for small to medium sized advertising and information display. It offers digital signage installers and system integrators the necessary features to easily install digital signage at a low cost.

- Solid state, small form factor design with low power requirements (about 10W)
- Included simple encoding software and playback scheduling software
- Easily transfer the contents wirelessly with smooth playback
- No additional startup costs or license fees for hardware and software
- 3-year warranty with support from Silex for entire system

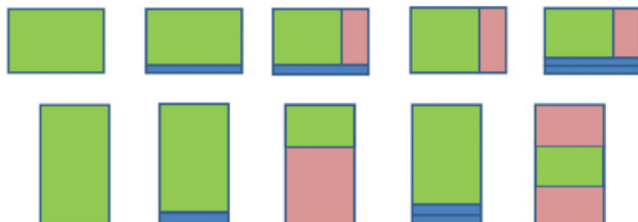
### Main Features:

#### 1 Easily Update the Contents Wirelessly

The digital signage display can be placed just about anywhere due to the flexibility offered by the wireless content update capability.

#### 2 Templates Allow for Simple, Colorful Content Creation

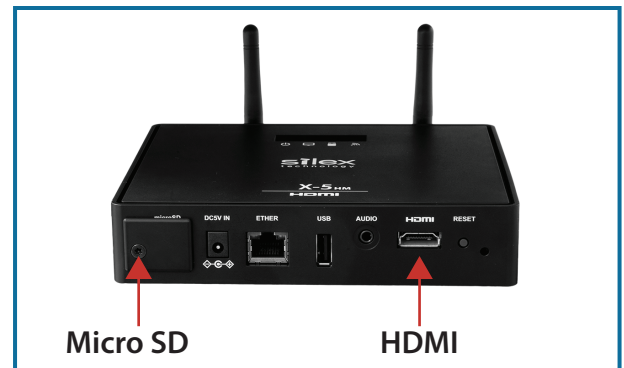
The included Silex Media Transporter software means all you have to do is select a template, add the video and still images. You can also customize scrolling tickers to easily create your content. You have a variety of templates to choose from including vertical or horizontal displays to make the content look great.



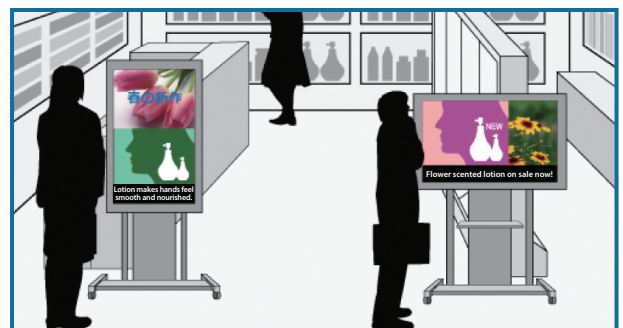
- Video or Picture
- Picture
- Picture or Scrolling Ticker

#### 3 HDMI & Micro SD Support

Choose your preferred display size, and a single HDMI cable is all you need to connect to your display for HD Video and Audio. The contents are stored on a Micro SD card, and there is a cover to protect the memory card in public spaces.



### Applications:





## X-5HM Wireless Multi-zone Digital Signage Player

### Software Options:

#### • SX Smart Manager Software

The optional SX Smart Manager software allows robust and convenient setup and configuration of the X-5HM system. SX Smart Manager allows remote monitoring of X-5HM making maintenance easy.

### Accessory Options



Mounting  
bracket



#### VESA Compliant Mounting Bracket

You can set it up on the back of a display or nearby the wall by using the optional mounting bracket.

### OEM Embedded X-5



- OEM circuit boards for integration into a display and SDK solutions are also available. Please contact us for details.

### Technical Data:

Product	X-5HM
Video Interface	HDMI
Audio Interface	HDMI Ø3.5mm stereo mini jack
Corresponding Output Resolution	720p, 1080p
Video Codec	JPEG XR
Ethernet Interface	10/100/1000 auto-detection (RJ-45) × 1 port, AutoMDIX
Wireless Interface	IEEE 802.11a/b/g/n (uses Silex wireless module SX-PCEAN)
Security	WEP (64/128), WPA-PSK (AES / TKIP), WPA2-PSK (AES)
USB Interface	USB 2.0 × 1 port
MicroSD Interface	Micro SDHC 32GB*
Push Button	Button 1: USB unmount, Button 2: factory settings
LED	Power, status, USB, wireless LAN
Content Size Automatic Adjustment	Aspect ratio hold, fills screen with content
Text Ticker Settings	Font selection, font color, background color, speed adjustment (step 3)
Content Update	Network, USB memory
Power Supply	AC adapter 100-240V 50 / 60Hz (operating voltage: 5V)
Standard Power Consumption	Maximum 10W
Configuration Method	Web browser, SX Smart Manager (sold separately)
External Dimensions	W155 × H120 × D32mm (not including antenna)
Weight	About 270g
Operating Environment Conditions	Operating Temperature: 0°C to 35°C Operating Humidity: 20% to 90% RH (non-condensing)
Storage Environment Conditions	Storage Temperature: 0°C to 60°C Storage Humidity: 20% to 90% RH (non-condensing)
Included Items	X-5HM Main Unit, AC adapter, AC cable, warranty card, GPL notice sheet, guide for download site

\* Micro SDHC memory not included. Please purchase separately.

### silex global sales & support locations