



## Wireless Presentation System Easy, Simple, Hassle-Free

# Z-1



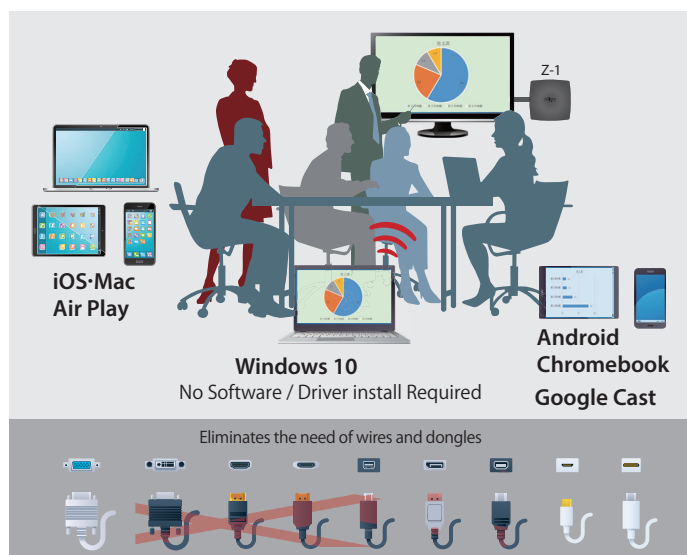
### Overview

Z-1 is a wireless presentation system that allows easy, simple and hassle-free screen share capability for your conference rooms. We have all experienced setup issues and equipment failures in conference rooms. Z-1 is a wireless screen display solution that's intuitive to use, takes away stress and wasted time, unnecessary cables and dongles, to enable users to present. No more broken cables and faulty adapters. No more cable mess. No more tripping over and breaking them. And finally, no more worrying about what devices guests will bring. As a plug-and-play solution, Z-1 takes away all those worries so you and your IT admins can focus on getting work done instead.

### Features

#### 1 Device Agnostic

Z-1 supports all major OS's of Windows, Mac, Android™, Chromebook, and iOS which eliminates the need for installing any dedicated drivers and software to share your screen. As a result, employees can setup screen share without worrying about IT restrictions. Also, users and guests can walk-in with any device and share/stream content wirelessly to a screen or projector.



#### 2 Enterprise Security

Z-1 has an access point and supports enterprise security for office environments. It supports IEEE 802.1X, VLAN, MAC address filter, and access control function as standard options. It can be configured per the requirements of your network security policy.

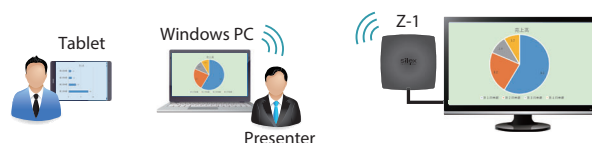
#### 3 IEEE 802.11ac High Speed Wi-Fi

Z-1 supports IEEE 802.11ac with 3 spatial streams that provides for High Speed Wi-Fi and reliable connectivity. The extra bandwidth and speed users can reliably stream internet content such as cloud documents or YouTube videos. Z-1 can also be used as an access point to create a wireless network if needed.

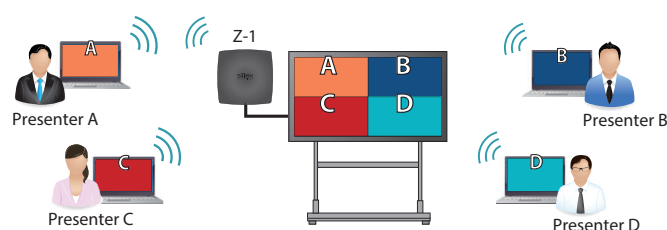
#### 4 Multiple Modes of Operation

Z-1 supports several operation modes that can apply to various use cases, such as projecting multiple screens, collaborating between sites, screen sharing across conference rooms for events, etc.

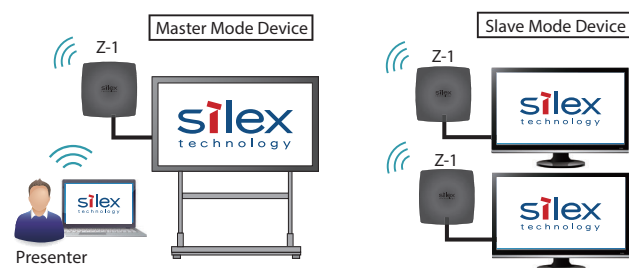
##### Single Presenter Mode : Project 1 device to a screen



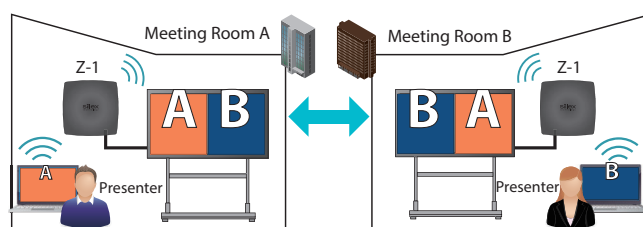
##### Multi-Presenter Mode : Project upto 4 devices to a screen



##### Distribution Mode : Project content to multiple screens



##### Pair Display Mode : Co-Share your screen across different rooms

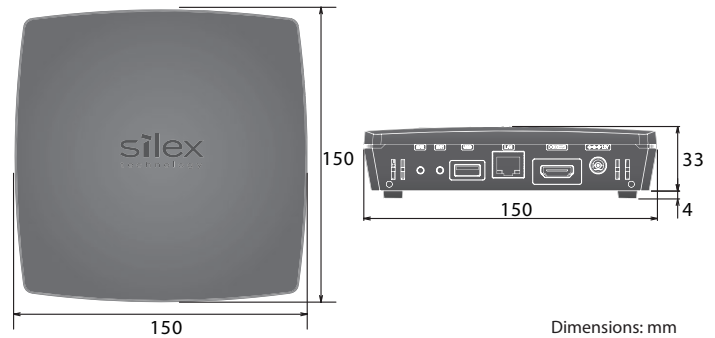


## Specifications

Main Unit	Wired LAN Interface	RJ-45 : x1 100Base-TX / 1000Base-T (Auto Recognition)
	Wireless LAN Interface	IEEE 802.11a/b/g/n/ac 3T x3R 2.4GHz : Channel : 1~13ch 5GHz : Channel : 36~48 * 52~64 * 100~140ch
	Device Interface	USB 2.0 Type-A x 1 (*1) HDMI 1.4b x 1 (*2)
	Switch	Push Switch x 2
	LED(s)	Body : x 4 RJ-45: x 2
	Operating Environment	Temperature : 0 to + 35 °C Humidity : 20 to 80% RH (no condensation)
	Power Supply	AC adapter 100-240V 50 / 60Hz (Voltage: 12V)
	Max. Power Consumption	9.36W (DC12V 0.78A) USB bus power excluded
	Dimensions	150.0 × 150.0 × 33.0mm
	Weight	340g
	Items Included in Package	Main unit, AC adapter, AC cord, rubber feet (4 pieces), warranty card, GPL information sheet, setup guide
Audio / Video	Resolution	1280x720 @ 60Hz (* 3), 1920x1080 @ 60Hz 3840x2160 @ 30Hz
	Audio Frequency	44.1KHz / 48KHz 2ch stereo
	Operation Modes	Single presenter mode, Multiple presenter mode (* 4) Pair display mode (* 4), Distribution mode (* 4) OSD function
Network	Networking Modes	Access Point mode, Station mode, Wired mode
	Wireless Security (Authentication)	○ Station OPEN, Shared, WPA-PSK, WPA2-PSK, WPA / WPA2-PSK WPA-Enterprise, WPA2-Enterprise, WPA / WPA2-Enterprise ○ Access Point OPEN, Shared, WPA-PSK, WPA2-PSK, WPA/WPA2-PSK, 802.1X, WPA-Enterprise, WPA2-Enterprise, WPA/WPA2-Enterprise
	Security Encryption	WEP, TKIP, AES
	Security (Other)	IEEE802.1X (PEAP / EAP-TLS / EAP-TTLS), Hidden SSID, MAC address filter, Firewall (access control)
	Max # of connected devices	100 units
	Multi SSID	4
	VLAN	4 tagged VLANs (ID: 1-4094)
	Tx Output Setting	5%~100% (Can be set in 5% increments)
	QoS	WMM-EDCA
	Virtual USB	USB Device server function
Other Specification	Supported Protocols	NTP, SNMP, DHCP Server / Client, AirPlay, Google Cast, RTP / TCP, SMB (Web Services Dynamic Discovery)
	Compliance Standards	VCCI Class A, RoHS
	Configuration Method	Z-1 OSD, Web page (http), AMC Manager®
	Supported OS	[Windows] (* 5) • Windows 8.1 (32bit / 64bit) • ChromeOS 90 or later • Windows 10 (32bit / 64bit) [Android] • Android 6 or later [iOS] • iOS 11 or later [macOS] • macOS 10.12 or later
	Warranty	5 years
Other Specification	JAN Code	4944406005817

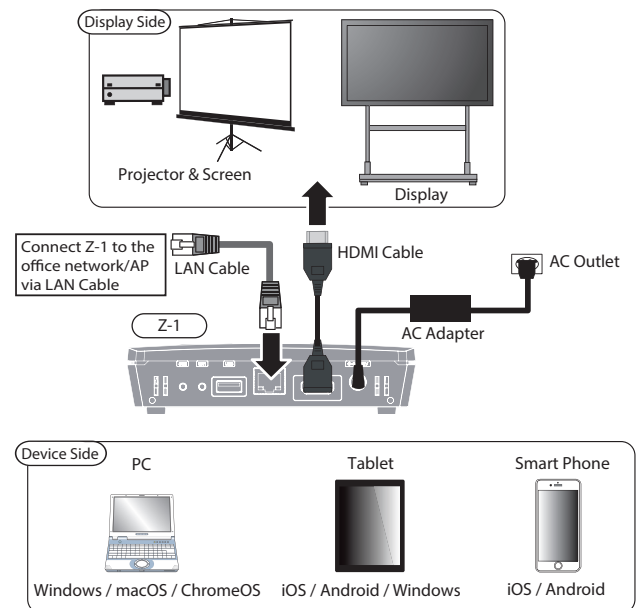
\* 1: Maximum USB bus power is 500mA. \* 2: Compatible with 4K / 30Hz, not CEC / HDCP.  
\* 3: Some projection functions are limited. \* 4: The first version is only via Windows.  
\* 5: Compatible OS of AMC Meeting / AMC Meeting Plus.

## External View



Dimensions: mm

## Connection Setup



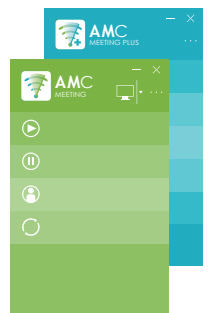
## AMC Meeting / AMC Meeting Plus



"AMC Meeting" is a run-time application for Windows OS. It provides users with the ability to project their screens to a display within two clicks of their mouse without needing to install any software or drivers.

"AMC Meeting Plus" is a separate application that helps users moderate and facilitate meetings by switching who gets to display in a group meeting and ideal for use in classroom and conference environments.

\* AMC Meeting Plus is available on our website.  
\* For Android use the "Google Home" standard APK to project.  
\* For Mac / iPhone, use "AirPlay" (standard OS application) to project.



Any questions about the product?  
Contact our customer support team!

<https://www.silextechnology.com/support/contact-silex-support>

silex technology is a registered trademark of silex technology, Inc. Other product or brand names may be registered trademarks of their respective owners.  
Technical information and specifications are subject to change without notice. © 2021 silex technology, Inc. All rights reserved.



### silex global sales & support locations

**US Office**  
silex technology america, Inc.  
+1-657-218-5199  
www.silextechnology.com  
sales@silexamerica.com

**Europe Office**  
silex technology europe, GmbH  
+49-2154-88967-0  
Germany toll free 0800-7453938  
www.silextechnology.com  
sales@silexeurope.com

**China**  
silex technology beijing, Inc.  
+86-10-8497-1430  
www.silex.com.cn  
contact@silex.com.cn

**Corporate Headquarters**  
silex technology, Inc.  
+81-774-98-3781  
www.silex.jp  
support@silex.jp

