

# Wireless Bridge BR-500AC Setup Guide

Thank you for purchasing the Wireless Bridge BR-500AC. BR-500AC is the wireless bridge which can add a wireless feature to non-wireless devices (10/100/1000BASE-T network devices). With 2.4GHz / 5GHz band support, non-wireless devices can easily be connected to a wireless network. Enterprise security feature will ensure safe and secure use of wireless communication at an office, factory, etc. where a higher security is required.

This Setup Guide explains how to setup and use BR-500AC in a wireless network.



WA106530XE

(De) Die deutsche Version der Konfigurationsanleitung können Sie von unserer Website herunterladen.

(Fr) Il est possible de télécharger la version française de ce guide d'installation depuis notre page d'accueil.

(It) La versione italiana della guida all'installazione è scaricabile dalla nostra homepage.

(Es) Puede descargar la versión en español de la guía de configuración desde nuestra página principal.

(Pt) A versão em português do guia de instalação pode ser baixada de nossa página inicial.

URL : <https://www.silextechnology.com/>

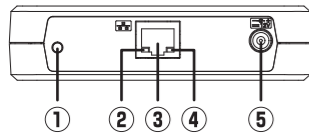
## Package Contents

Following items are bundled with BR-500AC.

- Wireless Bridge BR-500AC
- AC adapter
- LAN cable
- Setup Guide (this document)
- Warranty Guide and GPL Inquiry Card
- Declaration of Conformity (EU/UK model only)

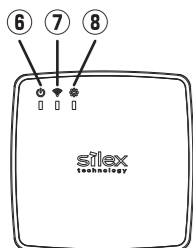
## Parts and Functions

### FRONT

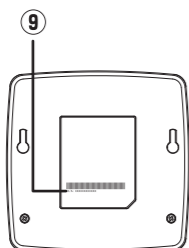


1 Push switch	<b>Starts BR-500AC in Configuration Mode:</b> Press and hold the push switch for 5 sec while BR-500AC is active. <b>Configures BR-500AC using Smart Wireless Setup:</b> Press and hold the push switch for 10 sec while BR-500AC is active. <b>Resets BR-500AC to factory default settings:</b> Press and hold the push switch while turning on BR-500AC. Release the switch when the WLAN LED turns green and then to red.
2 Link LED (Green/Orange)	<b>ON (Green):</b> Linked in wired LAN(1000BASE-T). <b>BLINK (Green):</b> Receiving packets in wired LAN(1000BASE-T). <b>ON (Orange):</b> Linked in wired LAN(100BASE-TX/10BASE-T). <b>BLINK (Orange):</b> Receiving packets in wired LAN(100BASE-TX/10BASE-T). <b>OFF:</b> Wired LAN is not connected.
3 LAN port	Connect the LAN cable.
4 Power LED (Yellow)	<b>ON (Yellow):</b> Powered on <b>OFF:</b> Powered off
5 Power connector	Connect the AC adapter.

### TOP



### BOTTOM

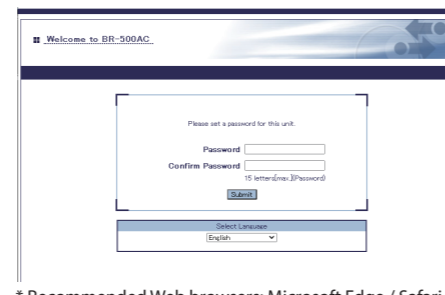


6 POWER LED (Green/Red/Orange)	<b>ON (Green):</b> Powered on <b>OFF:</b> Powered off
7 WLAN LED (Green/Red/Orange)	<b>ON (Green):</b> Running in Infrastructure mode. <b>BLINK(Green):</b> Processing setup using the Smart Wireless Setup. <b>OFF:</b> Wireless LAN is OFF. * Blinks together with STATUS LED when running in <b>Configuration Mode</b> . * Turns green and then to red during the initialization.
8 STATUS LED (Green)	<b>ON (Green):</b> AP is connected. <b>BLINK(Green):</b> Transferring data. <b>OFF:</b> AP is not connected. * Blinks together with WLAN LED when running in <b>Configuration Mode</b> .
9 MAC Address	MAC Address of BR-500AC

## Step1 Start BR-500AC in Configuration Mode for Password Configuration

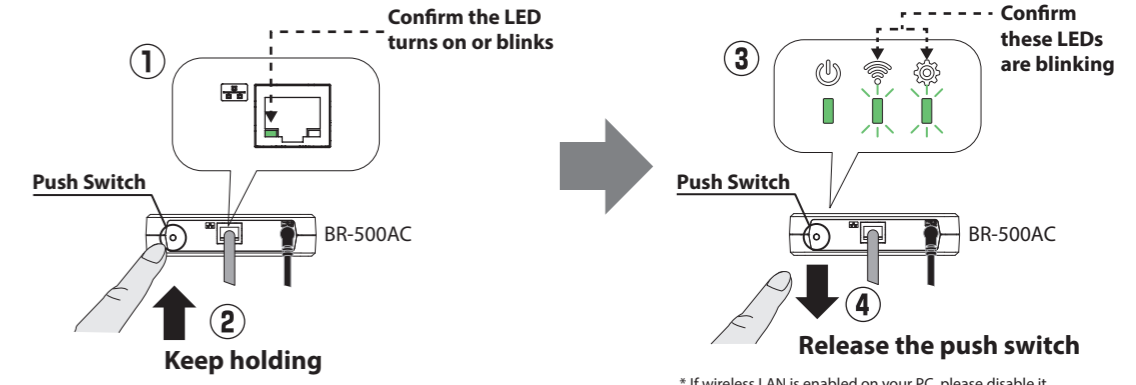
- 1 Connect BR-500AC to the PC using the LAN cable that came with BR-500AC.
- 2 Connect the AC adapter to BR-500AC, and the AC adapter's plug to an electrical outlet.

- 4 The Web browser is started and the password configuration page of BR-500AC is displayed.  
If a warning screen appears, click **Advanced** and then click **Continue to xxxxxx (unsafe)**.  
Enter the password to set for BR-500AC and click Submit.  
The password registration will perform and BR-500AC will be restarted. When all LEDs turn off and then the POWER LED turns green, the restart is finished.



\* Recommended Web browsers: Microsoft Edge / Safari  
\* The login password configuration page is displayed only when BR-500AC is configured for the first time.

- 3 When the POWER LED turns green and the Link LED turns on or blinks, press and hold the push switch on the front of BR-500AC. In 5 seconds, the WLAN LED and STATUS LED will start to blink green together. Release the push switch then. BR-500AC will start running in the Configuration Mode and be ready to configure from the PC that has been connected to BR-500AC via a LAN cable.



\* If wireless LAN is enabled on your PC, please disable it.

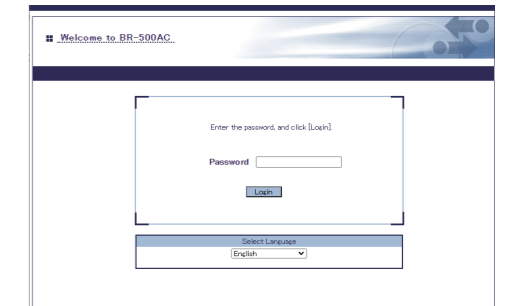
## Step2 Wireless Network Connection

When the password configuration is finished, connect BR-500AC to the wireless network. There are two connection methods below.

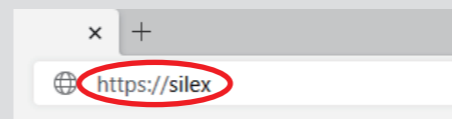
- 1) Selecting a wireless network to connect
- 2) Using Smart Wireless Setup

## Selecting a Wireless Network to Connect

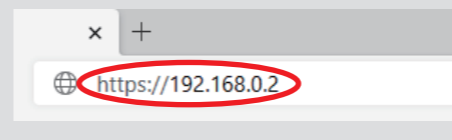
- 1 Start BR-500AC in Configuration Mode according to 3 and 4 of the Step 1. Enter the login password you have configured and click **Login**.



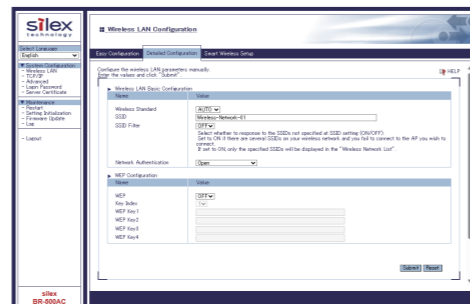
\* If the Web page is not displayed, enter "https://silex" in the address bar of the Web browser and press the **Enter** key.



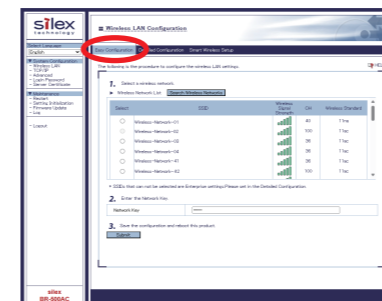
\* If the Web page is still not displayed after entering "https://silex", you need to check the IP address of the PC connected to BR-500AC. If a static IP address is configured to the PC, enter the PC's address after adding 1 to its last digit and press **Enter** key.



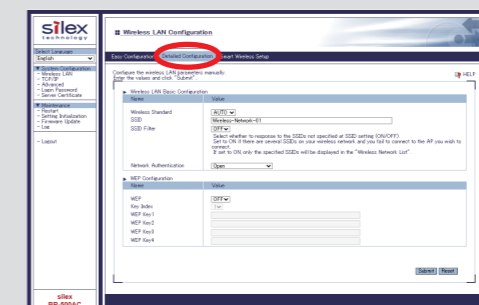
- 2 The Web page of BR-500AC is displayed.



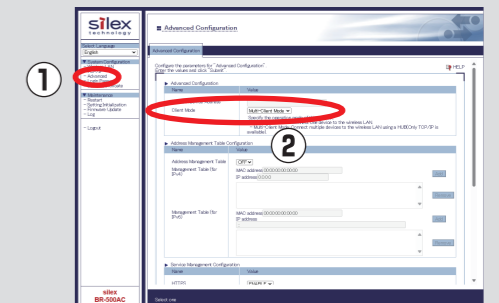
- 3 Click **Easy Configuration** at the top of the page. Select the destination network from **Wireless Network List** and enter the WEP Key or Shared Key for **Network Key**. Click **Submit** when finished.



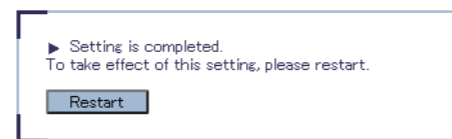
\* If the destination network is not displayed in the **Wireless Network List**, click **Detailed Configuration** at the top of the page. In the page displayed, enter the wireless settings of the network that you wish to connect BR-500AC to, and click the **Submit** button. Refer to the **HELP** for details on each setting.



\* To connect multiple network devices using an Ethernet HUB, click **Advanced** and select **Multi-Client Mode** for **Client Mode**.



- 4 When the confirmation message is displayed, click **Restart** to restart BR-500AC. The configuration has now been completed.



- 5 To give a wireless feature to the same PC (the one you have been using for configuration), please restart the PC. To give a wireless feature to the other device, turn off both BR-500AC and the PC, and remove BR-500AC from the PC. Refer to **Step3** to connect BR-500AC to the network device using a LAN cable.

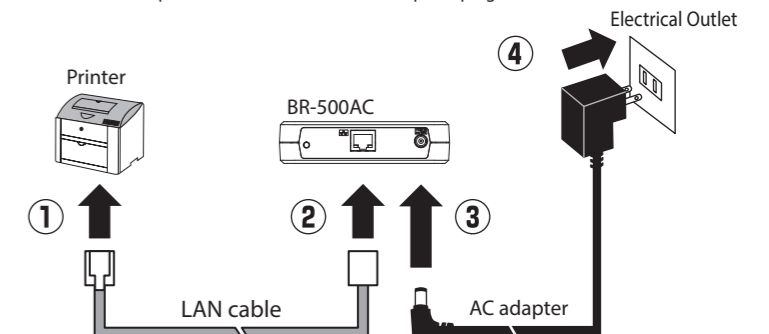
## Using Smart Wireless Setup

BR-500AC allows you to configure its wireless settings easily using a push switch if your wireless router supports WPS (Wi-Fi Protected Setup). How to configure wireless settings using the push switch is explained.

### NOTE

- Before you begin, the password configuration needs to be finished on BR-500AC.
- For wireless configuration using WPS, your wireless router must support WPS. Make sure that your wireless router supports WPS and is turned on in your environment.
- During this configuration, please temporarily move BR-500AC closer to your wireless router to make it easier for both devices to communicate.
- WPS may need to be enabled manually on your wireless router. For details, refer to the operation manual that came with your wireless router.
- If a security feature such as MAC Address filtering is enabled on your wireless router, disable it temporarily so that BR-500AC can communicate with your wireless router.
- If you plan to connect two or more network devices to BR-500AC using an Ethernet Hub, please go back to **Selecting a Wireless Network to Connect**. The **Client Mode** can be configured only when BR-500AC is running in **Configuration Mode**.

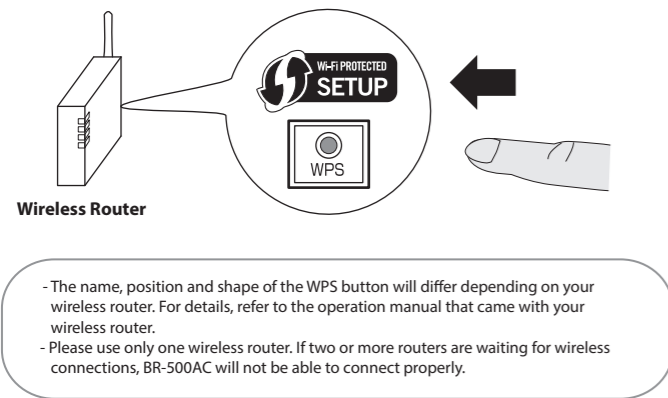
- 1 Connect the network device and BR-500AC using the LAN cable that came with BR-500AC. Connect the AC adapter to BR-500AC and the AC adapter's plug to an electrical outlet.



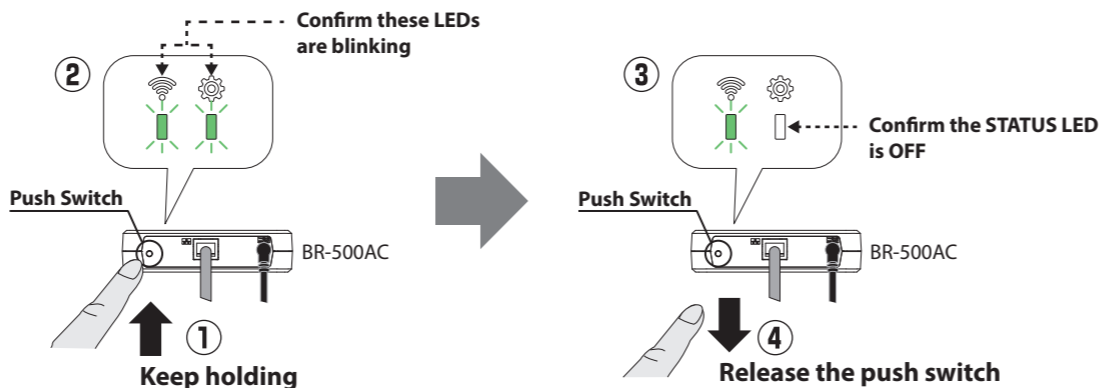
- 2 Turn on the network device connected to BR-500AC.

\* Some network devices require additional network settings. In such cases, refer to the manual that came with the network device.  
\* When turning on BR-500AC and network devices, be sure to turn on BR-500AC first. Do not press the push switch then.

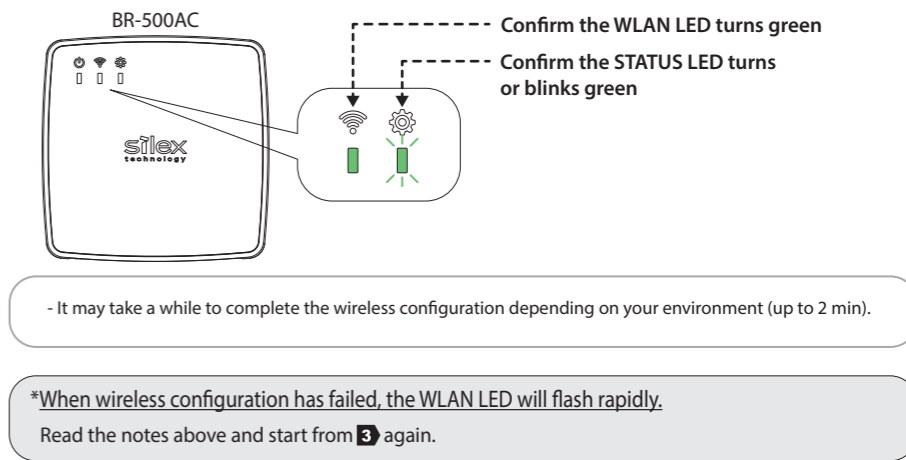
- Press the WPS button on your wireless router. Confirm that your wireless router is waiting for wireless connection.



- Press and hold the push switch at the front of BR-500AC. The WLAN LED and STATUS LED will start to blink green together. In 5 seconds, the WLAN LED will continue to blink while the STATUS LED will turn off. Release the push switch then.



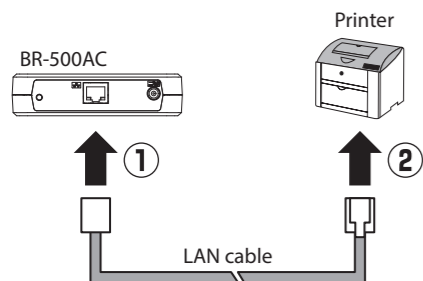
- BR-500AC will start to communicate with your wireless router. When the wireless configuration is successfully completed, the WLAN LED turns green and the STATUS LED turns or blinks green.



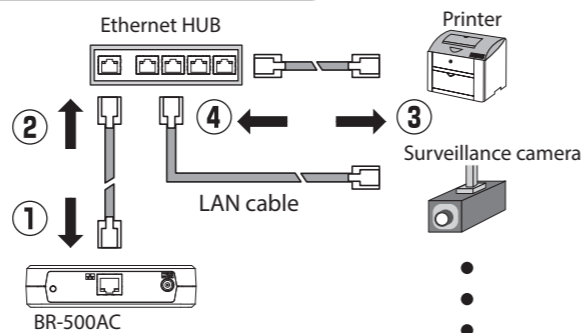
### Step3 Connect a Network Device to Use Wirelessly

- Turn off the network device that you wish to use wirelessly and connect it to BR-500AC using the LAN cable.

#### Sample connection in Single Client Mode

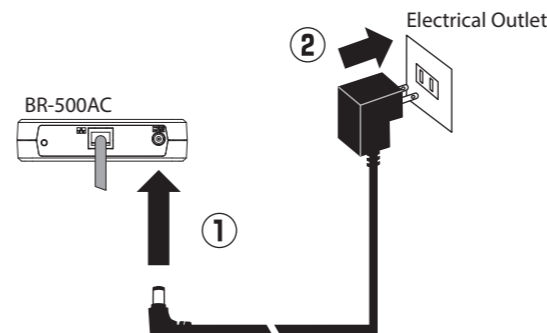


#### Sample connection in Multi-Client Mode



- Connect the AC adapter to BR-500AC and the AC adapter's plug to the electrical outlet.

- Turn on the network device connected to BR-500AC.

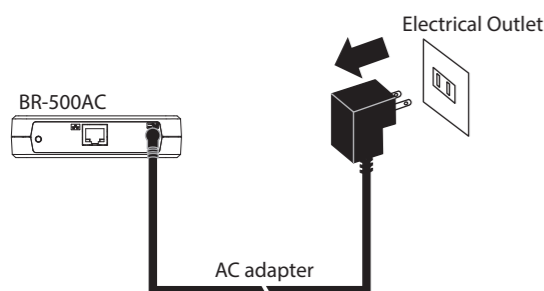


\* Some network devices require additional network settings. In such cases, refer to the manual that came with the network device.  
\* When turning on BR-500AC and network devices, be sure to turn on BR-500AC first. Do not press the push switch then.

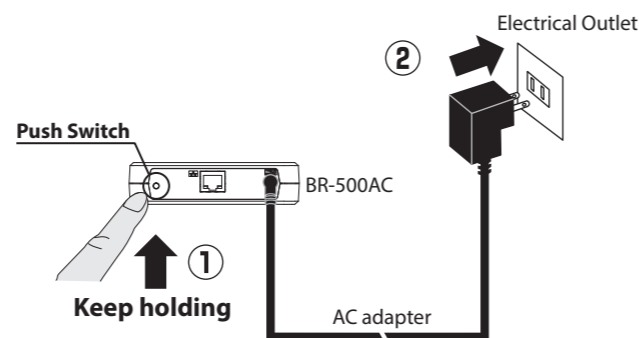
### Factory Default Configuration

How to reset BR-500AC to the factory default settings is explained.

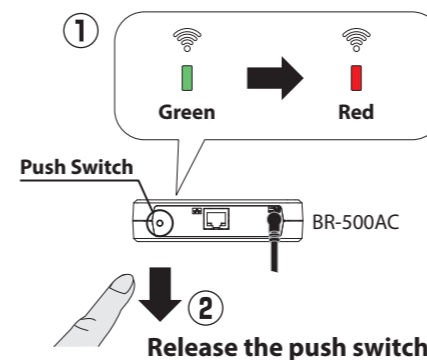
- Disconnect the AC plug of BR-500AC from the electrical outlet.



- While reconnecting the AC plug to the outlet, press and hold the push switch at the front of BR-500AC. Keep holding it.



- When the WLAN LED turns green and then to red, release the push switch. The factory default configuration begins. After the factory default configuration is completed, BR-500AC will restart.



### How to Download User's Manual

The User's Manual can be downloaded from our website.

- Access the website below:

URL: <https://www.silextechnology.com/>

- Go to the **Support** page and download the User's Manual.

Product Name	BR-500AC
User's Manual	BR-500AC User's Manual

### What's AMC Manager®?

AMC Manager® is an integrated device management software that can monitor and configure the Sillex products remotely over an IP network. If AMC Manager® is used, the operating status of BR-500AC units can be checked in a list view. There are two versions of AMC Manager®, the one is AMC Manager Free (free version) and the other one is AMC Manager (non-free version).

- Download and use the latest version of AMC Manager®.
- To use AMC Manager (non-free version), a license key needs to be purchased.
- Please contact Sillex Technology to purchase a license key.

AMC Manager® can be downloaded from the Sillex Technology's website.

### How to Download AMC Manager®

AMC Manager® can be downloaded from the Sillex Technology's website. Access the URL below to download it.

<https://www.silextechnology.com/>

- When the website is displayed, click **Support** from the top menu.
- Click **Software Download**.
- In the **Software Download** page, click **AMC Manager®**.
- Download AMC Manager®.

### Trademarks

- AMC Manager® is a registered trademark of Sillex Technology, Inc.
- Wi-Fi Protected Setup and related marks and logos are trademarks or registered trademarks of Wi-Fi Alliance.
- Windows and Microsoft Edge are trademarks or registered trademarks of Microsoft Corporation in the United States and/or other countries.
- Safari is trademarks of Apple Inc., registered in the United States and other countries.
- Other company names and product names contained in this document are trademarks or registered trademarks of their respective companies.

### Customer Support Center (USA/EU)

If you have any questions, please contact us at the following.

#### Customer Support Center information

E-mail: USA support@silexamerica.com

EU support@silexeurope.com

URL: <https://www.silextechnology.com/>

Sillex Technology America, Inc. / Sillex Technology Europe, GmbH