

ST-700 Setup Guide

silex
technology



WA106940XA

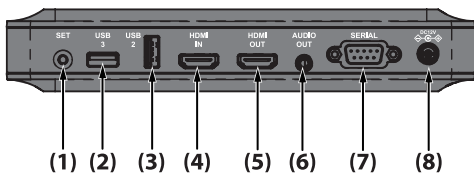
Thank you for purchasing "ST-700".
This document describes how to configure and use ST-700.

Package Contents

| | | | |
|--------------------|----|-----------------------------|----|
| ST-700 | x1 | AC adaptor | x1 |
| Power code | x1 | Rubber feet | x4 |
| Warranty booklet | x1 | Setup guide (this document) | x1 |
| GPL license notice | x1 | | |

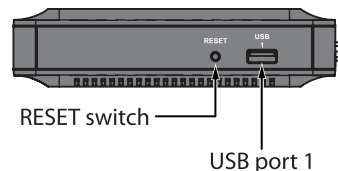
Parts and Functions

Front



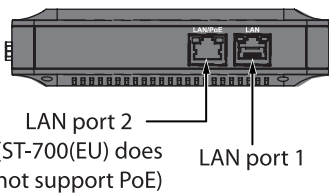
- (1) SET switch
- (2) USB port 3
- (3) USB port 2
- (4) HDMI input interface
- (5) HDMI output interface
- (6) AUDIO output interface
- (7) Serial interface
- (8) DC jack

Left Side



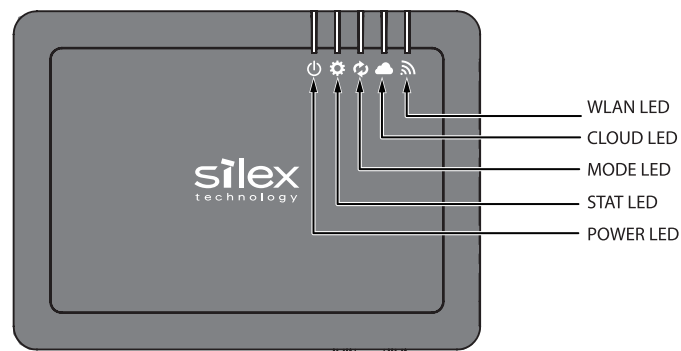
- RESET switch
- USB port 1

Right Side



- LAN port 2 (ST-700(EU) does not support PoE)
- LAN port 1

Top



Notes on Use

- If you are using ST-700 (EU), please pay attention to the following points.
- It is recommended to use an HDMI cable shorter than 3m.
- It is recommended to use a serial cable shorter than 3m.
- For power supply, only the AC adapter is supported (the power supply using PoE is not guaranteed).

Follow the steps below for initial configuration.

Step 1 Before You Begin

Step 2 Network Configuration

Step 3 Installation

Step 4 Operation Check

1. Before You Begin

1-1. Downloading Applications

- Download "AMC Manager®" to configure ST-700 and "SX Sign Control Software" to create a program to broadcast.
Access the Silex Technology's website below for download.
URL: <https://www.silextechnology.com/>
- When the website is displayed, click **Support** on the top menu.
- Click **Software Download**.

- In the **Software Download** page, click **AMC Manager®**.

- Download AMC Manager®.
When the download is finished, install it to the PC that you use for configuration.

* In this document, "AMC Manager® Free" is used for initial configuration, however, "AMC Manager®" can also be used for which you purchased a license key.

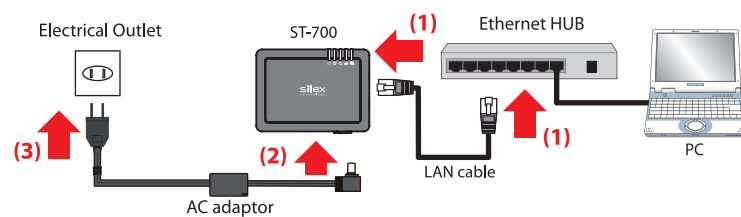
- Download SX Sign Control Software in the same way.
Also, download the user's manual. (The user's manual can be downloaded by selecting the product model at the **Support** page.)

| | |
|---------------|--|
| Utility | SX Sign Control Software |
| User's Manual | ST-700 User's Manual SX Sign Control Software User's Manual |

- Install the downloaded SX Sign Control Software (hereinafter, "the content management software").

1-2. Connection to PC

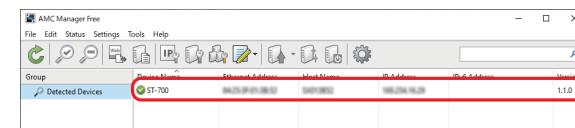
Enable "**Obtain an IP address automatically**" on the PC.
When it is finished, connect one end of LAN cable to ST-700's LAN port 1 or LAN port 2 and the other end to the Ethernet HUB (1), and turn on ST-700 (2)(3).



- * When there is not a DHCP server, set a link local address(169.254.xxx.xxx) to the PC.
- * To configure multiple ST-700 units at once, connect them to the Ethernet HUB. Up to 10 units can be configured at a time.
- * When there is only one ST-700 unit to configure, you can also configure it by connecting it directly to the PC using a LAN cable.

2. Network Configuration

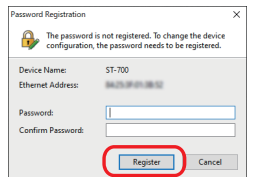
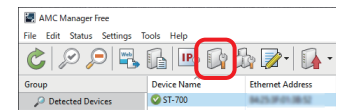
To configure ST-700, use AMC Manager® that you have downloaded.
When AMC Manager® is started on the PC, ST-700 units will appear on the main screen.



To configure one unit, see **2-1. Individual Configuration**.
To configure multiple units, see **2-2. Bulk Configuration**.

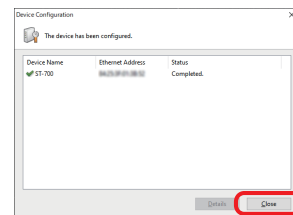
2-1. Individual Configuration

- Select ST-700 and click the icon **Configure the device** ().
- The password registration window is displayed.
Enter the login password to configure for ST-700 and click **Register**.

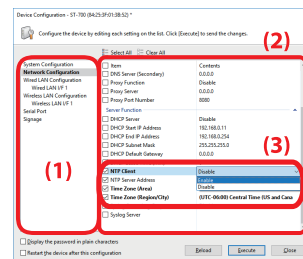


* Make a note of the password so that you can refer when you have forgot it.

- When the password configuration is finished, ST-700 is restarted.
Click **Close** when the window below appears.



- The device configuration screen appears.
If a configuration category is clicked on the left side of the screen (1), the corresponding setting is displayed on the right side (2).
Check the check boxes of the items to update, and change the values (3).
To broadcast the program, the following items must be configured.
- **Network Configuration - NTP Client**
- **Network Configuration - NTP Server Address**
- **Network Configuration - Time Zone (Area)**
- **Network Configuration - Time Zone (Region/City)**



- From the AMC Manager®'s main window, select ST-700 again and click the icon **Configure the device** ().

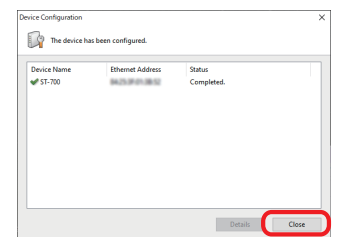
- When the password entry screen is displayed, enter the password that you have set at **2**, and click **OK**.

- * Set **ENABLE** for the NTP client.
- * To broadcast a program using ST-700, an NTP server is required. When there is not an NTP server, set the IP address of the PC on which the content management software is installed. The PC will act as an NTP server.
- * If the local domain name of the DNS server ends with ".local", the name resolution does not work as it conflicts with the mDNS service.
- * The setting whose check box is checked will be configured to ST-700.
For the setting you do not want to change, clear the check box.

- When you have finished updating the values, check the check box of **Restart the device after this configuration** (1), and click **Execute** (2).



- The configuration result is displayed. ST-700 will automatically restart and operate with the new settings.
Click **Close**.



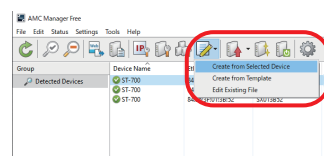
The individual configuration is completed.

2-2. Bulk Configuration

To configure multiple ST-700 units at once, create a configuration file by reading the setting from one ST-700 unit. For bulk configuration, the password of ST-700 needs to be set to the configuration file.

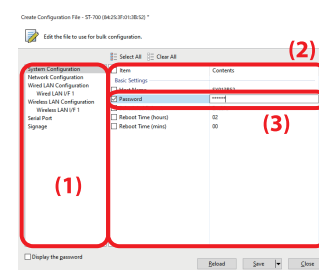
2-2-1. Creating Configuration File

- Select one ST-700 unit, select the icon **Create the configuration file** () and click **Create from Selected Device**.



- The configuration file creation screen appears.
If a configuration category is clicked on the left side of the screen (1), the corresponding setting is displayed on the right side (2).
Check the check boxes of the items to update, and change the values (3).

To configure multiple ST-700 units at once and broadcast a program, the following items must be configured.
- **System Configuration - Password**
- **Network Configuration - NTP Client**
- **Network Configuration - NTP Server Address**
- **Network Configuration - Time Zone (Area)**
- **Network Configuration - Time Zone (Region/City)**

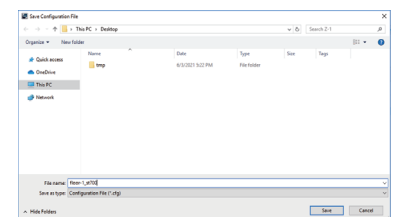


- * Set **ENABLE** for the NTP client.
- * To broadcast a program using ST-700, an NTP server is required. When there is not an NTP server, set the IP address of the PC on which the content management software is installed. The PC will act as an NTP server.
- * If the local domain name of the DNS server ends with ".local", the name resolution does not work as it conflicts with the mDNS service.
- * The setting whose check box is checked will be configured to ST-700.
For the setting you do not want to change, clear the check box.

- When you have finished updating the values, click **Save**.



- The file save dialog appears.
Enter the file name in **File name** and click **Save**.



- After the configuration file is saved, the screen of **2** is displayed again.
To create multiple configuration files, repeat steps **2** to **4**.

- Click **Close** to close the configuration file creation screen.
When it is closed, AMC Manager®'s main screen appears.

The configuration file has been created.
Go on to **2-2-2. Bulk Configuration** in the back.

2. Network Configuration

2-2-2. Bulk Configuration

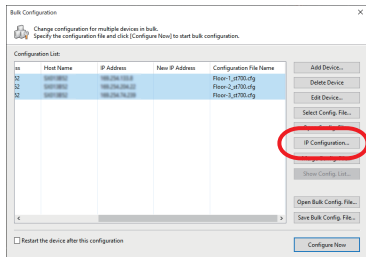
1 For the IP address configuration of multiple ST-700 units, the IP address of the PC needs to be changed beforehand. Change the IP address of the PC to the one that can be communicated with ST-700 units after the configuration.

Setting example)

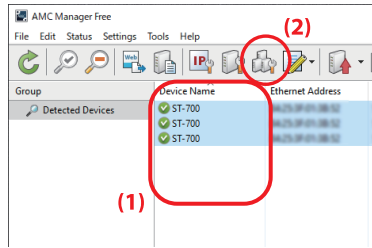
| Sample address to set for ST-700 | Sample address to set for PC |
|----------------------------------|------------------------------|
| 192.168.0.10 - 192.168.0.30 | 192.168.0.100 |
| 172.25.72.100 - 172.25.72.200 | 172.25.72.50 |

2 Turn on all ST-700 units that you want to configure.

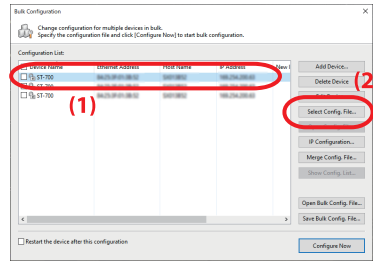
7 Click **IP Configuration** for the IP address configuration. When you are using the DHCP server to automatically configure the IP address, skip this and go on to **10**.



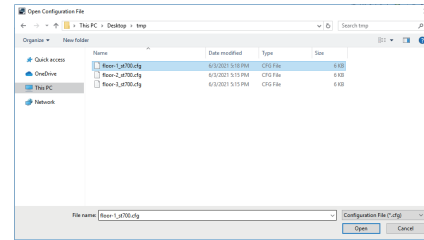
3 Start AMC Manager® on the PC. Select all ST-700 units you want to configure (1) and click the icon **Configure multiple devices in bulk** (2).



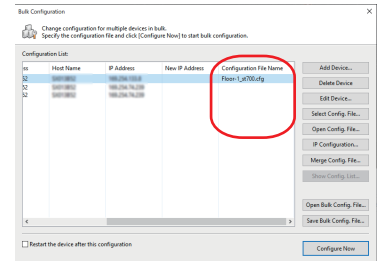
4 The bulk configuration screen appears. Select ST-700 units to apply the configuration file (1) and click **Select Config. File** (2).



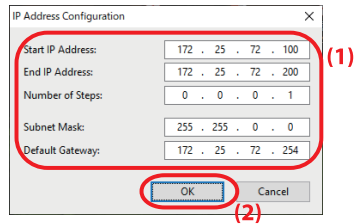
5 The configuration file selection screen appears. Select the configuration file that you have created at **2-2-1. Creating Configuration File**, and click **Open**.



6 The selected configuration file is displayed under **Configuration File Name**. Repeat the steps **4** to **5** to specify the configuration files for all ST-700 units.

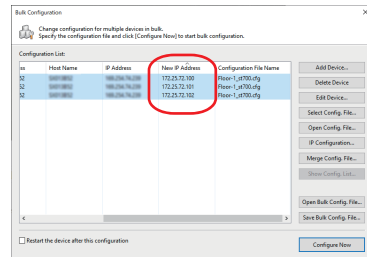


8 The IP address configuration screen appears. Set the IP address range for ST-700 units (1) and click **OK** (2).



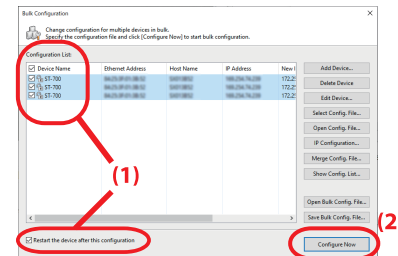
* In this example, when IP addresses are applied to three units of ST-700, the first ST-700's IP address will be the start IP address: 172.25.72.100. As the IP address increases by "0.0.0.1" (see "Number of Steps"), 172.25.72.101 will be allocated for the second device and 172.25.72.102 for the third device.

9 The IP addresses are pre-assigned for ST-700 units and are displayed under **New IP Address**.



10 Check the check boxes of ST-700 units to configure (1) and also check the check box **Restart the device after this configuration** and click **Configure Now** (2).

*If the check box at the left of **Device Name** is checked, all check boxes are checked.



*When the password is set to ST-700, the password entry screen is displayed. Enter the password of ST-700 and click OK.

11 The progress bar is displayed during the configuration and the result is displayed when the configuration is completed. Click **Close** when the configuration is completed.

*If the result status does not say "Completed", modify the setting of the configuration file and try again.

12 ST-700 units will automatically be restarted after the configuration. The new setting will take effect after the restart.

The bulk configuration is completed.

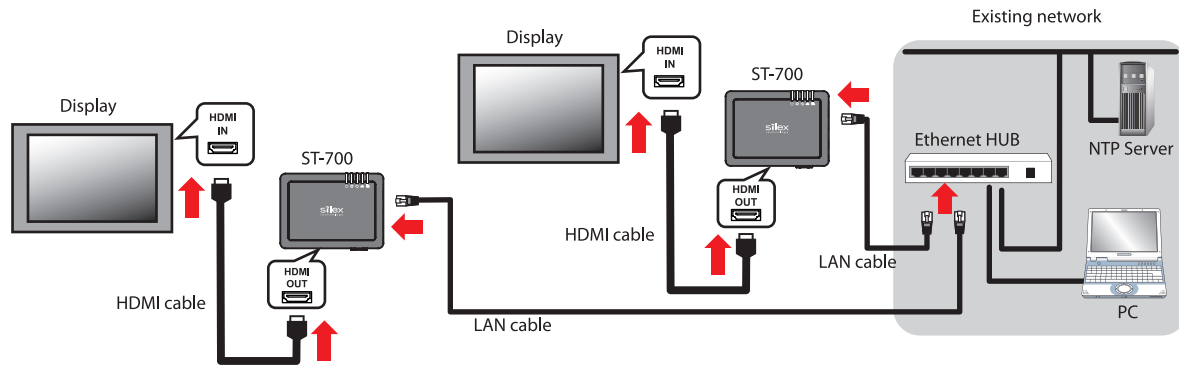
3. Installation

The following is the installation example for ST-700. Connect ST-700 to a display.

* To broadcast a program using ST-700, the time needs to be obtained from an NTP server. Install an NTP server in your network (installation sample 1), or use the PC on which the content management software is installed in order to use it as an NTP server (installation sample 2).

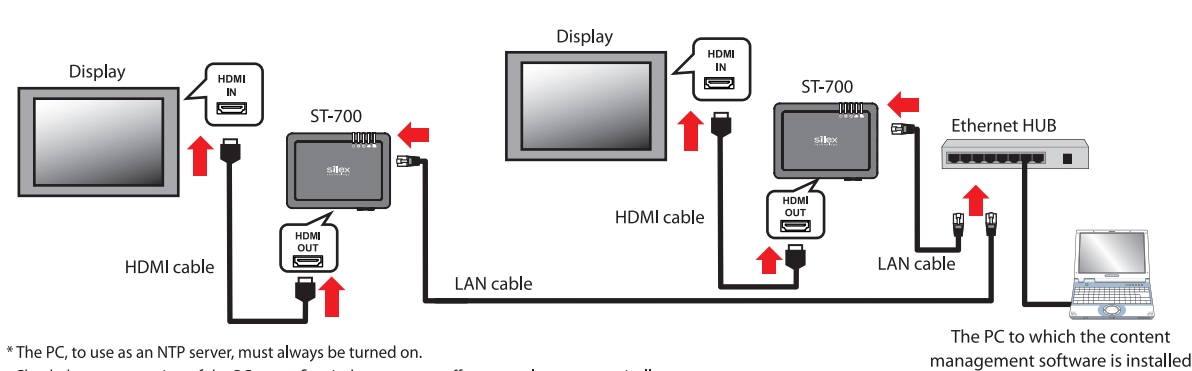
3-1. Installation Sample 1

When an NTP server already exists in your network environment, connect ST-700 to it. Connect ST-700 and the display using an HDMI cable, and connect ST-700 and the Ethernet HUB using a LAN cable. By using the content management software, a program can be transferred to ST-700 units running in the same network.



3-2. Installation Sample 2

When an NTP server is not installed to your network environment, or if you want to use ST-700 and the display without your network, use the PC to which the content management software is installed in order to use it as an NTP server. In this case, set the IP address of the PC (on which the content management software is installed) for the **NTP Server Address** of ST-700.



* The PC, to use as an NTP server, must always be turned on. Check the power setting of the PC to confirm it does not turn off or go to sleep automatically.

4. Operation Check

4-1. Creating a Program

After the installation is finished, check the proper operation. Create a program and schedule for a test broadcast using the content management software, and load it to ST-700. For details on how to use the content management software, refer to the "SX Sign Control Software User's Manual".

4-2. Broadcasting a Program

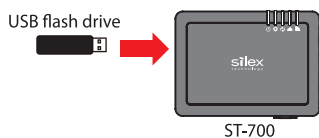
The created program and schedule are put together as one schedule in the content management software. To load the schedule to ST-700, follow the steps below.

Loading a schedule to ST-700 using the content management software
The schedule can be loaded to ST-700 running on the network. For how to load the schedule using the content management software, see "SX Sign Control Software User's Manual".

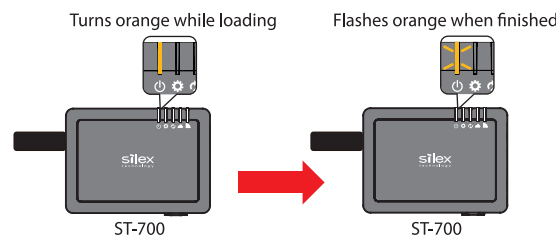
Loading a schedule to ST-700 using a USB flash drive

The schedule can be loaded to ST-700 by plugging the USB flash drive into the USB port of ST-700. For this method, the schedule needs to be saved in the USB flash drive in advance. For how to export the schedule, see "SX Sign Control Software User's Manual". The following explains how to load a program from the USB flash drive where the exported schedule is saved.

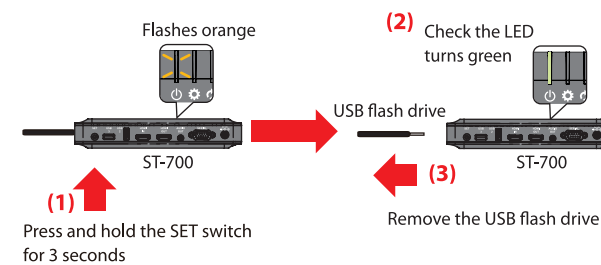
1 Turn on ST-700 and connect the USB flash drive to USB port 1 or USB port 2. (* This document is using USB port 1 as an example.)



2 When the USB flash drive contains the contents to load, the POWER LED turns orange that indicates the beginning of load. When the load is finished, the POWER LED flashes orange.



3 Press and hold the SET switch for 3 seconds (1). Check that the POWER LED turns green (2), and then remove the USB flash drive (3).



4-3. What if the program is not broadcasted?

If the program is loaded to ST-700 but the broadcast does not start, check the following points.

- Check that the LAN cable is properly connected to the device.
- Check that the HDMI cable is properly connected to the HDMI output port of the device.
- Check if the time can be obtained from the NTP server.
- Check that there are no problems with the schedule contents.

* Use the Web page of ST-700 to see if communication with the NTP server is properly established. For how to access the Web page, refer to "ST-700 User's Manual".

Customer Support Center

If you have any questions, please contact us at the following.

| Customer Support Center information | |
|-------------------------------------|---------------------------|
| E-mail | |
| USA | support@sillexamerica.com |
| Europe | support@sillexeurope.com |

URL: <https://www.sillextechnology.com/>