

StitchLink II Setup Guide

Vol.1



WA 0 2 0 4 0 X B

silex technology, Inc.
www.silex.jp

Thank you for purchasing our StitchLink II.
Safety instructions are noted in the "Readme" file on the StitchLink II
Setup CD. Be sure to read them before using this product.

Safety instructions regarding the radio waves

Please note the following instructions:

- Do not use this product near medical devices such as a heart pacemaker. The radio wave generated by this product may interfere with the operation of these devices and may threaten one's life.
- Do not use this product near microwave ovens. The radio wave used by microwave ovens may cause interference to this product.

Supported Operating Systems

Windows 2000/XP

Preparation

Remove the following items from the package:

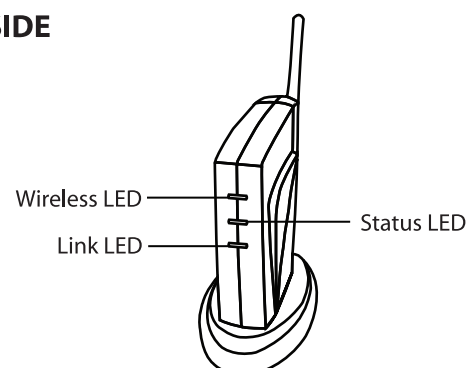
- StitchLink II
- Stand
- AC Adaptor
- Setup Guide (this document)
- CD-ROM (StitchLink II Setup CD)
- USB Cable
- Rubber Feet
- Warranty Book

Please confirm that you have either a wireless PC (embedded wireless or external wireless USB adaptor) or a wireless access point/router. Finally, confirm that your PC is using either Windows 2000 or some version of Windows XP.

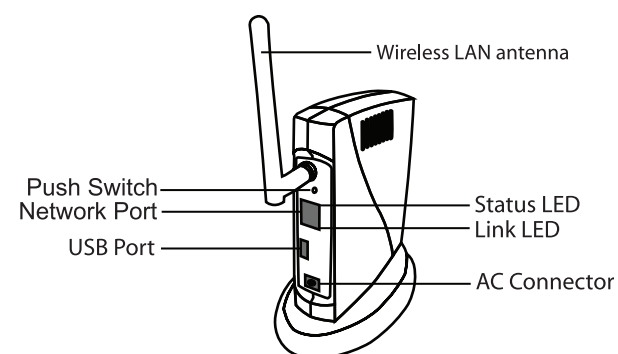
When the product is placed in the horizontal (side) position, please use the rubber feet provided to prevent the unit from sliding. Place one on each corner.

Name of Parts

FRONT SIDE



BACK SIDE



Initial Configuration

This product has 4 methods of initial configuration as listed below:

- Configuration through a wired connection
- Configuration through a wireless connection
- Configuration using a USB memory
- Configuration using Windows Connect Now

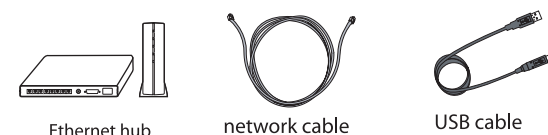
This Setup Guide describes how to configure this product through a wireless LAN and wireless connection. For other configuration methods, please refer to the Users Manual (English).

Step1 Connect and Start StitchLink II

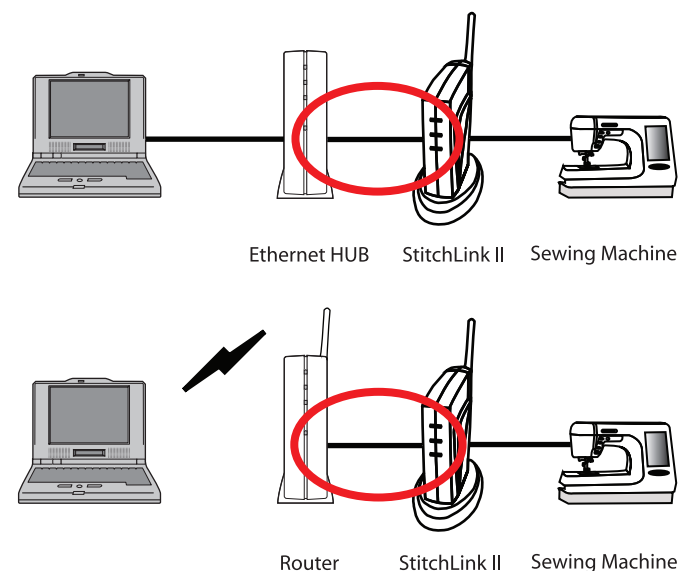
You can configure StitchLink II wired or wirelessly.

Configuration with a wired connection

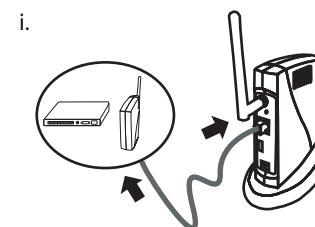
A The following items are necessary for the setup.



B Connect StitchLink II to an Ethernet HUB or Wireless Access Point/Router using the network cable.



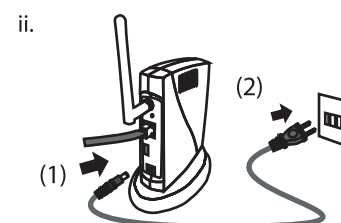
C Connect StitchLink II to the network and turn it on.



Connect a network cable to this product. Connect the other end of the network cable to one of the following devices which has already been connected to the network.

- Access point
- Broadband router
- Ethernet hub

Use a crossover cable when connecting this product directly to the PC.



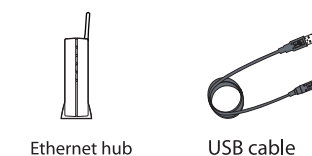
Connect the power supply to this product, and then insert the AC Plug into the electric outlet.

Always use the AC adapter bundled with this product.

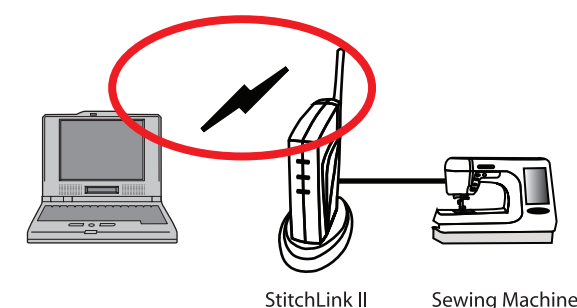
iii. Verify the Link LED (Green) turns on and the Wireless LED (Green) turns off.

Configuration with a wireless connection

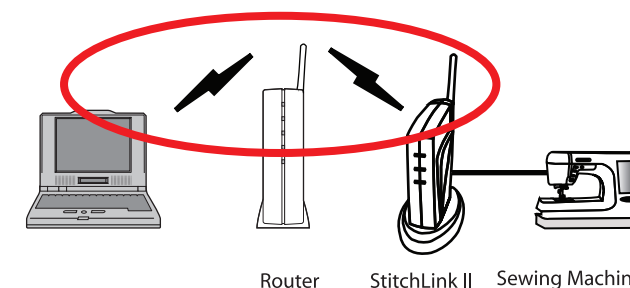
A The following items are necessary for the setup.



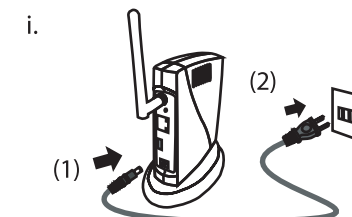
B Establish PC to StitchLink II wireless connection (Ad-Hoc mode).



Establish PC to StitchLink II wireless connection via Wireless Access Point/Router (Infrastructure mode).



C Turn StitchLink II on.



ii. Connect the power supply to this product, and then insert the AC Plug into the electric outlet.

Always use the AC adapter bundled with this product.

Verify the Wireless LED (Green) blinks.

Option1 If Using a Wireless PC to a Wireless Access Point/Router

Note: If you are communicating directly from a PC to StitchLink II, please skip to **Step2**.

A Check existing PC TCP/IP address.

- Left click **Start**.
- Left click **All Programs**.
- Left click **Accessories**.
- Left click **Command Prompt**.
- Type **ipconfig** and hit **Enter** key.
You can see PC's IP address.

IP Address:

Subnet Mask:

Default Gateway:

B Check existing PC wireless settings.

- Left click on the **Wireless Network** icon in the task tray displayed on the bottom right of the desktop.
- Left click on **Properties**.
- Left click on the **Wireless Networks** tab.
- Your existing wireless network should be highlighted.

Left click on **Properties** and write down the following:

- a. Network name (SSID): *Note - Case sensitive*

- b. Note if the Data encryption is set to Disabled or WEP. If WEP, you will need to know your WEP Key.

※ Please write the settings if WEP is Enabled

WEP Key:

(Enabled or Disabled)

- c. Left click **OK** twice in both windows to return to the Wireless Network Connection Status window.

Step2 Establishing a PC to StitchLink II Wireless Connection

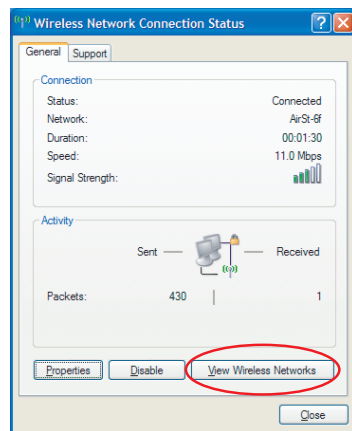
Note: If you are using the “Option1 Wireless Access Point/Router” to StitchLink II, please skip to **Step4**.

A Verify that the power of the StitchLink II is turned on ("link" LED should be green).

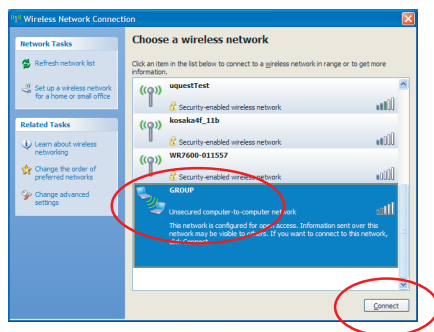
B Left click on the Wireless Network icon in the task tray displayed on the bottom right of the desktop.



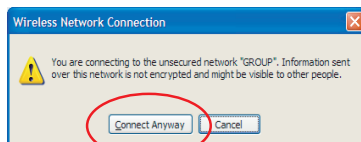
C Left click on View Wireless Networks to see all Wireless Networks in range.



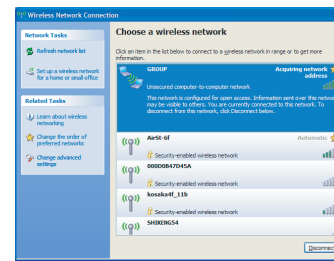
D Left click GROUP and then left click Connect. This will connect you to the StitchLink II. Sometimes it is not necessary to click Connect as it may be already connected.



E You may get a message to confirm connection to a unsecured network. If so, left click Connect Anyway.



After approximately 45 seconds, you will be connected. Close the Wireless Network Connection window. The connection procedure is complete.



Step3 Assign IP Address to Your PC. This IP address will be used to configure the StitchLink II.

A Go to the Wireless Network icon of Wireless Network Connection Properties.

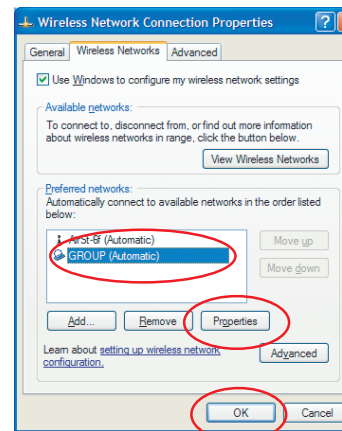
- Right click on the Wireless Network icon in the bottom task tray.
- Left click on Open Network Connections.
- Double left click on Wireless Network Connection.
- Left click on Properties.

Designate GROUP as the preferred network.

- i. If GROUP is highlighted, go to next step.

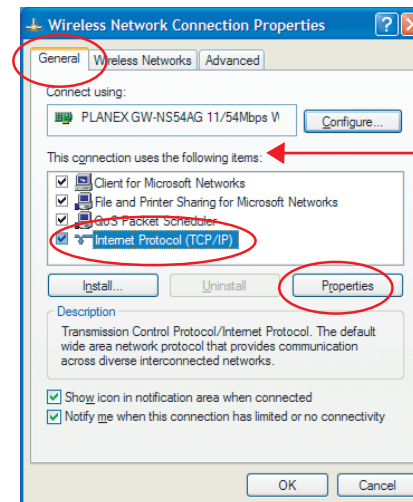
- ii. If GROUP is not highlighted:

- Left click on **GROUP**.
- Left click on **Properties**.
- Left click on **OK**.



C Assign IP Address

- Left click on the General tab.
- Scroll down in the This connection uses the following items: box and left click on Internet Protocol (TCP/IP).
- Left click on Properties.

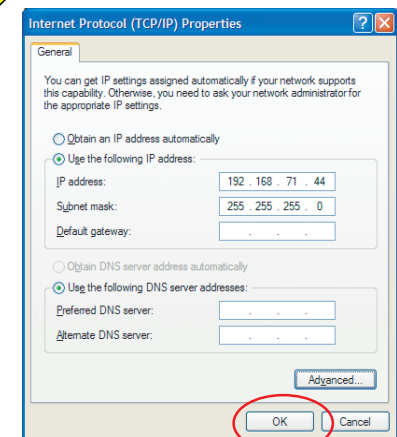


Enter an IP address to be used by this PC during the installation process.

Note: If you are unsure of what address to use, please use the IP address in the following example.

- Left click next to the Use the following IP address and enter the below IP address and subnet mask.
- Select Use the following IP Address and enter the following:
 - IP Address: 192.168.71.44
 - Subnet Mask : 255.255.255.0
- Left click on OK to exit the Internet Protocol (TCP/IP) Properties screen.
- Left click on OK to save the changes to Wireless Network Connection Properties and then close your network connections window.

Left click Close.



StitchLink II Setup Guide

Vol.2



silex technology, Inc.
www.silex.jp

Step4 stitchLink II Initial Setup

- A** If a security software has been installed on your PC, temporarily disable the firewall function of your security software.

Install the **StitchLink II Setup** CD into the CD-ROM drive of your PC.

If the installation menu does not appear, do the following:

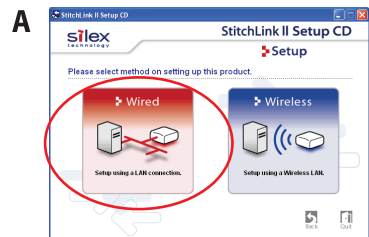
- Left click **Start** on the bottom left corner of your screen.
- Left click **Run** to open F:\Autorun.exe (the letter associated with your CD-ROM drive may be different - i.e. F:\).
- Left click **Browse**.
- Double left click Autorun.
- Left click **OK** to run autorun.exe.



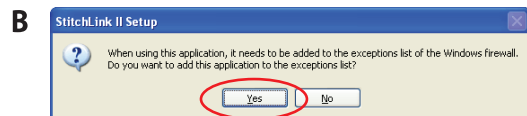
Left click **StitchLink II Setup**.

Step5 Select the connection type from Wired or Wireless

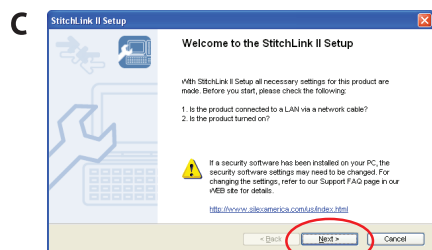
Select **Wired** for wired connection.



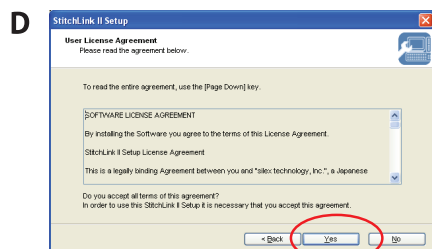
Left click **Wired**.



When in a Windows XP environment (SP2 or higher), the following message will be displayed. Left click **Yes**.

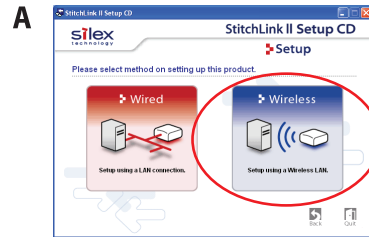


Left click **Next**.

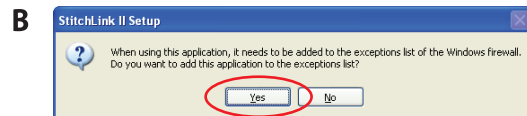


Please read the "User License Agreement".
If you agree, left click **Yes** to the User License Agreement.

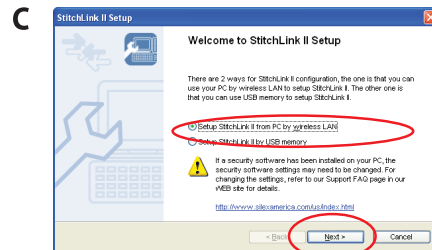
Select **Wireless** for wireless connection.



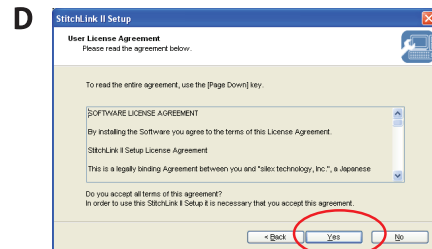
Left click **Wireless**.



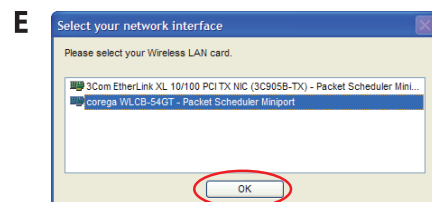
When in a Windows XP environment (SP2 or higher), the following message will be displayed. Left click **Yes**.



Select **Setup StitchLink II from PC by wireless LAN** and left click **Next**.

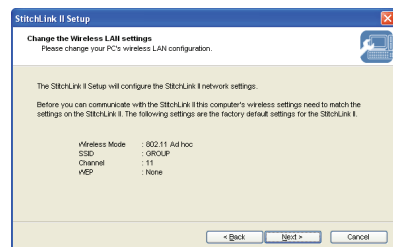


Please read the "User License Agreement".
If you agree, left click **Yes** to the User License Agreement.

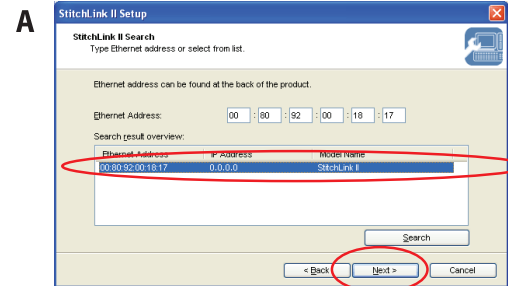


If two or more network cards are installed in the PC, the screen above is displayed to select the network card to be used.

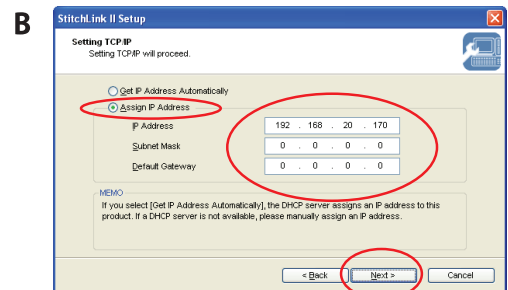
If the screen below is displayed, you need to change the wireless settings on the PC manually. If the wireless settings on the PC differ from the configuration information on the screen below, change the PC wireless setting to match those displayed on the screen below. Back to Step2.



Step6 Assign an IP address/ wireless parameters to StitchLink II



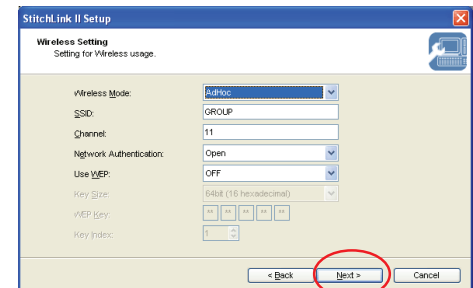
Left click on the StitchLink II model name to be configured. Then left click **Next**. If StitchLink II does not appear, left click on the **Search** button.



Select **Assign IP Address** and enter the following:

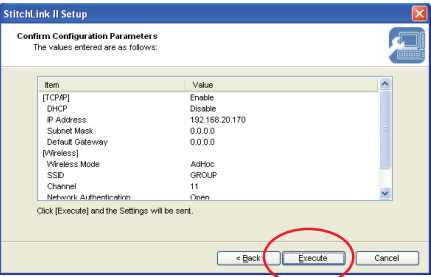
- If you are using the "Option1 Wireless PC to Wireless Access Point/Router" to StitchLink II, enter the following:
 - Select **Assign IP Address**.
 - Enter an IP address where the first three (3) set of numbers are identical to the PC IP address from "Option1". The last set of numbers must be different from any other IP addresses on your network.
 - Enter the same subnet mask as your PC from "Option1".
 - Enter the same default gateway address as your PC from "Option1".
- If you are communicating directly from a PC to StitchLink II, enter the following:
 - IP Address : **192.168.71.49**
 - Subnet Mask : **255.255.255.0**
- Left click **Next**.

- C** Enter the wireless parameters to use this product with a wireless connection.

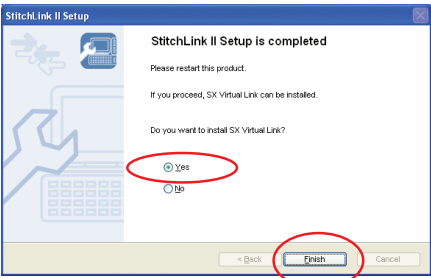


Configure the StitchLink II wireless settings.

- i. If you are communicating directly from a PC to StitchLink II, enter the following:
 - a. Change **Wireless Mode** to **AdHoc**.
 - b. Type **GROUP** as the SSID (Group must be capitalized).
 - c. Left click **Next**.
- ii. If you are using a the “Option1 Wireless Access Point/ Router”, enter the following:
 - a. Change Wireless Mode to **Infra**.
 - b. Enter the SSID from “Option1” (Note that the SSID is case sensitive).
 - c. Enter your WEP configuration if applicable.
- iii. Left click **Next**.

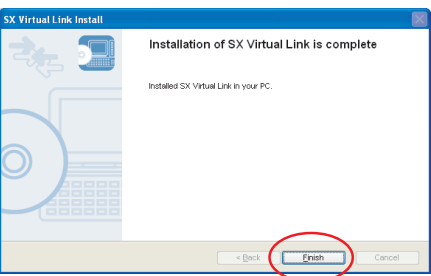


Left click **Execute** to Confirm Configuration Parameters.



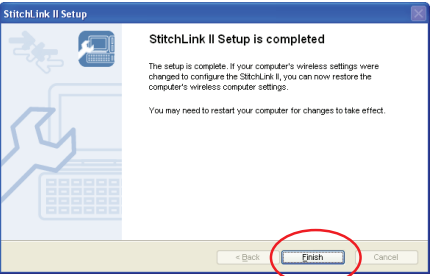
Select **Yes** and left click **Finish** to install the SX Virtual Link.

Follow the instructions the screen and install SX Virtual Link.

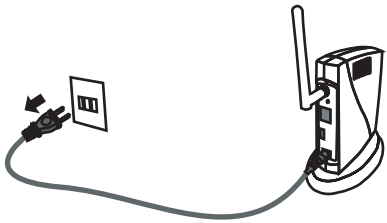


Left click **Finish** in the next to windows and close the StitchLink II Setup CD window by clicking **Quit**. Click **Yes** to "Is it ok to finish".

If you changed the wireless setting on the PC manually, the screen below will be displayed.

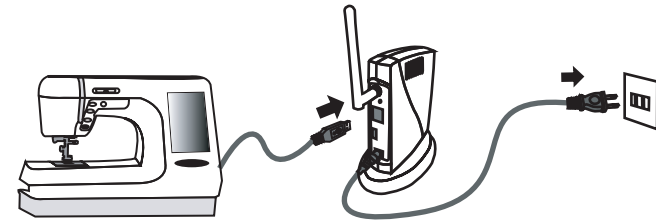


H



To reflect the wireless configuration, disconnect the power plug from the outlet and unplug the network cable.

I



Connect the sewing machine to be shared over the network along with this product via a USB cable, and insert the power plug into the outlet.

Option2 Setting the PC and StitchLink II to Infrastructure Mode

Note: If you are communicating directly from a PC to StitchLink II, please skip to Step6.

- A Left click on the Wireless Network icon in the bottom task tray.
- B Left click on **Properties**.
- C Scroll down in the "This connection uses the following items:" box and left click on Internet Protocol (TCP/IP).
- D Left click on **Properties** and return settings to original status from step 2 (if the address type is DHCP, select **Obtain an IP address automatically** and you will not need to enter the IP address and Subnet Mask).
- E Left click OK in the next window to Internet Protocol (TCP/IP) Properties.
- F Left click **OK** in the next window to Wireless Network Connection Status.
- G Left click **View Wireless Networks**.
- H Left click the "SSID" of your wireless network, left click **Connect** and close the window.

Step7 Using the Sewing Machine

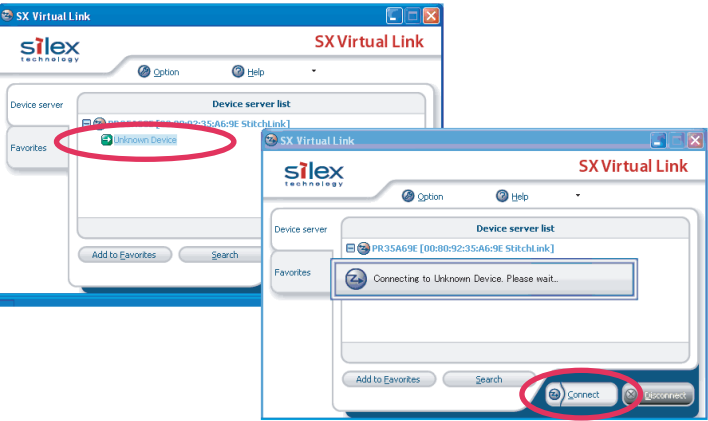
- A Load the sewing machine software containing the sewing machine driver (Customizer, Digitizer, etc.). Refer to the sewing machine manual for installation instructions.

B Open SX Virtual Link Application.

- i. Left click the **Start** on the bottom left corner of your screen.
- ii. Left click **All Programs**.
- iii. Move the cursor to the SX Virtual Link and left click on the **SX Virtual Link** that appears on the right to open the program.

C Select the USB Sewing Machine.

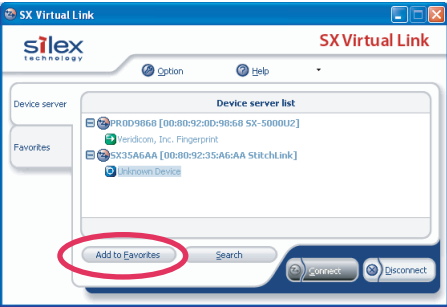
- i. StitchLink II should be listed in the "Device server list". If not, please left click **Search**.
- ii. Click the [+] next to StitchLink II to display the sewing machine. An unknown device should be displayed.
- iii. Left click on the **Unknown Device** and left click on Connect.
- iv. Insert the sewing machine CD containing the sewing machine driver. The "Found New Hardware Wizard" window will be displayed. Left click Next.
- v. Left click Finish to complete the "Found New Hardware Wizard".
- vi. The sewing machine will be connected once the status icon next to the Unknown Device has changed to "Connected". If not, please left click Search. To change the name of the device, refer to the StitchLink II manual.
- vii. Open your sewing machine software application as if you have a direct USB cable connection. You should have all the same functionally wirelessly as if you were directly connected to the sewing machine.



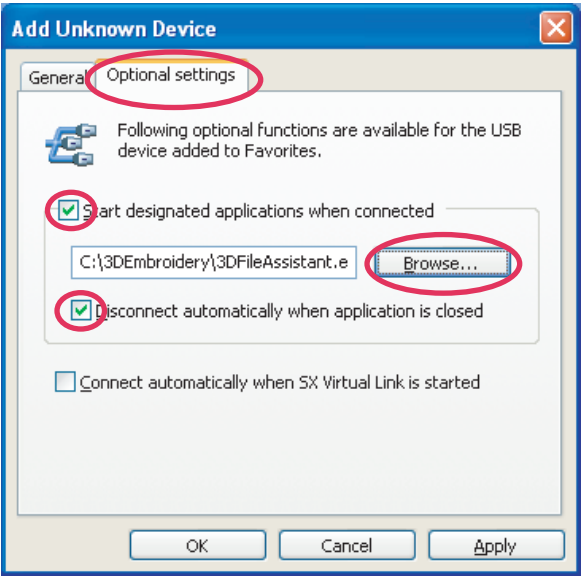
D Recommended for PFAFF sewing machines

Using these highly-recommended connection options will launch the PFAFF software automatically when you connect in the SX Virtual Link and disconnect automatically when you close the PFAFF software.

- i. From the SX Virtual Link window, left-click on **Add to Favorites**.



ii. Go to the “Optional Settings” tab.



- a. Check the boxes for “Start designated applications when connected” and “Disconnect automatically when application is closed.”
- b. Click Browse to select the sewing machine software. (It will have an “.exe” extension.)
- c. Click **OK**.

NOTE:

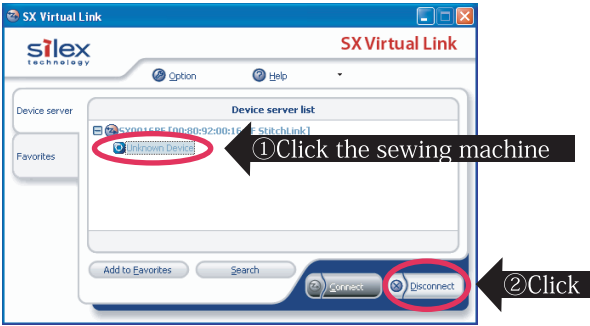
In the event that you choose not to set these configurations, please be sure to close the PFAFF software before disconnecting in the SX Virtual Link utility. Disconnecting from the SX Virtual Link utility while the PFAFF software is running may create a situation where you will not be able to reconnect. If this situation occurs, please reboot the PC, StitchLink, and the sewing machine to allow the communication to be reset.

Caution:

Wireless communication can be subject to interference and may cause a disruption in communication between the sewing machine and the PC. If this were to occur, you may need to reboot the PC, StitchLink II, and the sewing machine to allow communication to be reset.

Step8 Disconnect When Not Using Sewing Machine

A In the SX Virtual Link application, click on the Sewing Machine (unknown device unless renamed) and click on **Disconnect**.



One personal computer can connect with each sewing machine. When the sewing machine is in use by another PC, the status icon, "Warning" is displayed indicating the sewing machine cannot be connected.