

1. Introduction

Thank you for purchasing our product. This manual provides information on how to configure and use StitchLink. To correctly and safely use this product please read carefully.

StitchLink provides a wireless connection between a PC and a sewing machine.

<StitchLink>

Network Interface	IEEE 802.11b (1M/2M/5.5M/11Mbps automatic negotiation)
Device interface	USB 2.0 Full Speed (A type)
Network Protocol	TCP/IP, NetBEUI, NetBIOS
Supported Operating systems	Windows 2000, Windows XP

[About this Manual]

- Copying all or part of this manual without our permission is forbidden.
- The contents of this manual may be changed without advance notice.
- If you have any question about this manual or our products, please contact our customer support.
- Please note that the actual screens will vary from the examples in this manual. This is caused by different versions of operating systems on the PC, upgrades, etc.
- This manual has been edited very carefully. However, silex technology, Inc. is not responsible for any mistakes included in this manual or any damages, direct or indirect, arising from the use of this manual.
- Microsoft, Windows, Windows NT etc. are registered trademarks of Microsoft Corporation in the U.S. and other countries.
- Other brand or product names are registered trademarks or trademarks of their respective companies.

[About the Notation]

This manual uses the following symbols to point out specific information. The information after the symbols should always be followed.



TIP

This symbol indicates important information that needs to be observed when operating the product. Make sure to read this information for safe and proper use.



NOTE

This symbol indicates information that is useful when using the product. If you experience difficulties operating the product, please refer to this information first.

Safety Instructions

- To ensure correctly and safely use, please read the following information carefully before using our product. The safety instructions include important information on safe handling of the product and on general safety issues.
- This manual contains safety instructions that must be observed to avoid potential hazards that could result in personal injuries or material damage. The safety instructions have been classified according to the potential risk involved as follows:



Danger

“Danger” indicates the existence of a hazard that could result in bodily injury if the safety instruction is not observed.



Warning

“Warning” indicates the existence of a hazard that could result in material damage if the safety instruction is not observed.

Examples



This symbol warns of possible danger.

The danger symbol will contain another symbol or have a picture near it. (This warns of possible electrical shock)



⊘ This is the prohibit symbol.

This symbol will include another symbol or have a picture near it to indicate what is prohibited.



⊘ This is the prohibit symbol.

This symbol indicates what is prohibited specifically.



This indicates a regulation by its contents.

The regulation will appear inside or near this symbol. (Indicates to unplug).








Warning about physical connections

	Do not allow physical impact: When damaged, unplug this product from power and contact your point of purchase. Failure to take this action could cause fire or an electrical shock.
	Keep the cord and cables away from children. They may be injured or receive a shock
 	If this product is detached from the device(s), unplug the power to the device(s) before reconnecting.
	If the sewing machine has a ground wire, it must be used to prevent electrical shock and power surges.



The following warnings should be observed during use.

	Do not disassemble or modify the cover of this product.
	Do not use this product with the case removed. You may receive an electric shock.
	Do not attempt to check, adjust or repair this product by yourself. You may receive an electric shock.
	Check with your dealer if the product needs to be repaired.
	If this product becomes hot, or you smell smoke, turn off the sewing machine then unplug the power cable and disconnect this device immediately.
	If a foreign object (liquid, metal) gets into this product, turn off the sewing machine then unplug the power cable and disconnect this device immediately.
	Contact your dealer about repairing this product.



Warning about physical connections



When unplugging this product, do not pull on the cord. The cord may break resulting fire and/or electric shock. Pull on the plug only.

Do not put this product on an unstable location. The product may fall causing injury or damaging the product.

Do not put this product in a humid or dusty place. Fire or electric shock may occur.



When moving this product, disconnect the power and usb cables. Fire or electric shock may occur.





The following warnings should be observed during use.



When the product will not be used for an extended time, disconnect and unplug the power cable.



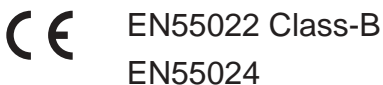
Verify all cables are connected properly before using this product.

2. StitchLink

This equipment has been tested and found to comply with the limits for a Class B digital device, pursuant to Part 15 of the FCC Rules. These limits are designed to provide reasonable protection against harmful interference in a residential installation. This equipment generates, uses, and can radiate radio frequency energy and, if not installed and used in accordance with the instructions, may cause harmful interference to radio communications. However, there is no guarantee that interference will not occur in a particular installation. If this equipment does cause harmful interference to radio or television reception, which can be determined by turning the equipment off and on, the user is encouraged to try to correct the interference by one or more of the following measures:

- Reorient or relocate the receiving antenna.
- Increase the separation between the equipment and receiver.
- Connect the equipment into an outlet on a circuit different from that to which the receiver is connected.
- Consult the dealer or an experienced radio/TV technician for help.

This device complies with Part 15 of the FCC Rules. Operation is subject to the following two conditions: (1) This device may not cause harmful interference, and (2) this device must accept any interference received, including interference that may cause undesired operation.



Environment

The following are needed for this product.

The followings are objects that connect to the network.

- PC with wireless communication
- USB Cable (A-B Type Connectors)
- Sewing machine.

Supported OS

Windows 2000, Windows XP

Operating Environment

- Temperature: +10 C +35 C
- Humidity: 20% to 80%RH (no dewing)

Storage Environment

- Temperature: -10C to 50C
- Humidity: 20% to 90%RH (no dewing)

Electric current

5V +- 5% 1.0A

EMI

VCCI Class-B

FCC Class-B

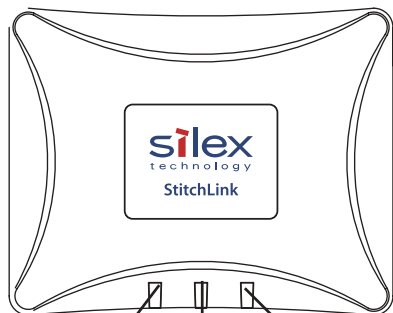
EN55022 Class-B

EN55024

Equipment explanation

Part name and function

Top

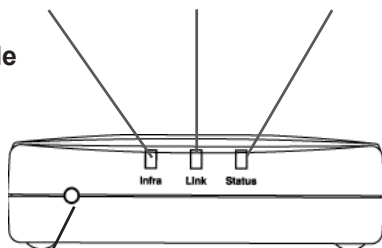


Infra LED
(Green)

Link LED
(Green)

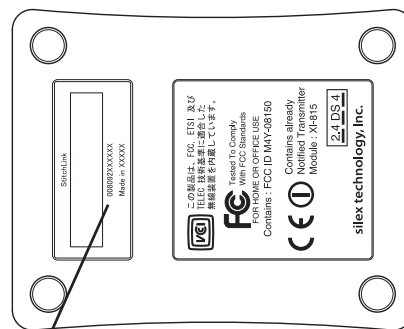
Status LED
(Orange)

Front Side



Push Switch

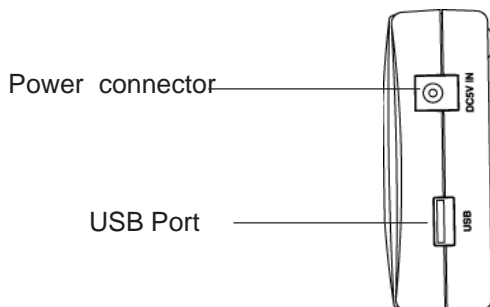
Bottom



Ethernet Address

(The last 6 digits are the product serial number)

Right Side



Power connector

USB Port

<Top/Front Side>

The LEDs have the following meaning:

Infra LED (Green)

Lights when an Infra. mode network connection is established.

Link LED (Green)

Lights when an OldAdHoc mode network connection is flashed.

Lights when an AdHoc mode network connection is established.

Lights when an Infra. mode network connection is established.

Status LED (Orange)

Flashes during data transfer.

<Bottom>

Ethernet Address

The Ethernet (MAC) Address of the device is found on the bottom. The last 6 digits are the product's serial number.



NOTE

- If the Ethernet Address is 00:80:92:18:0E:1A (noted as 008092180E1A) then the product's serial number is 180E1A.

<Right Side>

USB Port

Connect a USB Cable (A Type connector)

Power Connector

Connect AC adapter

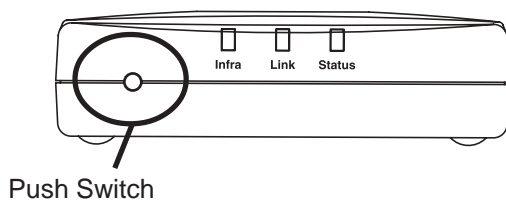
<Front Side>

Push Switch

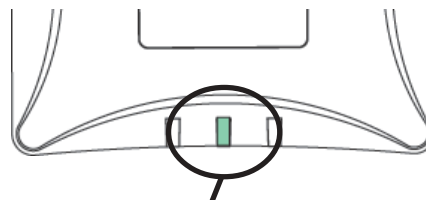
By pushing the push switch, the server can be restored to factory-default settings . It can also be used to put this product into infrastructure mode.

Restore Factory default

1. Please verify that AC adapter is not connected to this product.
2. While pushing the push switch, connect the AC adapter to the power supply connector of this product.
Shortly after a power is supplied, all of the Light Emitting Diodes will light and then some will turn off.
3. Continuing pushing (about 5 seconds) — when the restoration starts all of the LED will light.
When the status LED lights, release the push switch.



Push Switch



Link LED

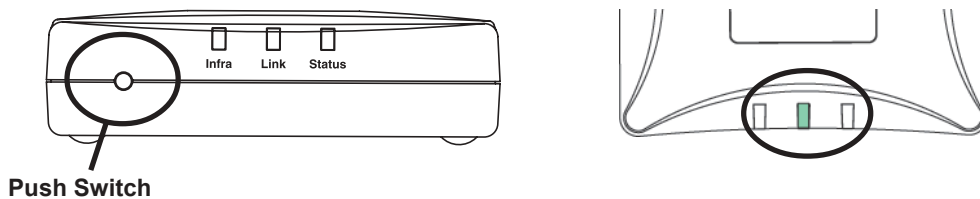


TIP

- Do not turn off the power to this product while it is initializing to factory default.
- When this product is turned on again after factory default is completed, do not push the push switch.

<Put into infrastructure mode>

1. Please verify that AC adapter is connected and that this product has started normally.



2. Push and hold the push switch down. Continue to hold down the push switch for about 5 seconds. The lights will blink and then the infrastructure LED will light. It is now in infrastructure mode.



- When using Infrastructure during the initial setup, disable WEP on the access point.
- If a mistake is made during the configuration, restore factory default and try again.

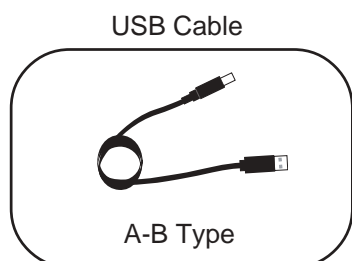
How to Connect

Connect this product to a sewing machine and network



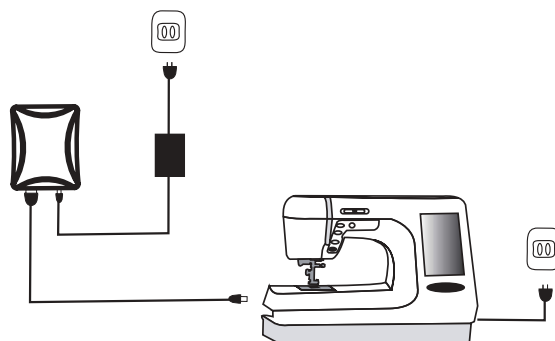
- If this product has been used in another network environment, restore to factory default.

This product needs the following to connect to a sewing machine.



1. Connect the AC Adapter to this product.
2. Plug in the Power cable to the sewing machine.
3. Connect this product to a sewing machine. This product uses a type A connector and the sewing machine will use a type B connector.

[Example]



- The USB Cable will have two types of connectors.
- Make sure of the connector type.



Type A



Type B

4. Make sure that sewing machine is working and turned on.



- Using an AC adapter other than the one provided with this product can cause damage.
- Wait for 2 or more seconds after connecting/disconnecting the USB cable.
- Do not disconnect the USB cable during using.

Other Functions

The following describes of the other functions of this product.

Function

Assign the IP address automatically using DHCP, BOOTP and RARP

- DHCP/BOOTP

If a DHCP/BOOTP server is working on your network, the DHCP/BOOTP protocol of this product will assign the IP address to this product.



- This product's DHCP protocol is compatible with RFC2131/2132.
- If you use the DHCP function of this product, talk to your administrator.

- RARP

If a RARP server is working on your network, the RARP protocol of this product will assign the IP address to this product.



- If you use the RARP function of this product, talk to your administrator.

- Web Brower functionality

This product supports HTTP. You can configure this product and check its status via a Web browser. If you have Internet access, you link to this product's support information.



- We recommend using Internet Explorer 4.0 or Netscape Navigator 4.0 or newer. The Web browser must support HTTP 1.0(RFC1945) and HTML 2.0(RFC1866).
- If you use the Web browser function, you should configure the IP address of this product and enable the TCP/IP protocol.
- An IP address must be assigned prior to using the Web browser.

- SX Virtual Link

If you use a sewing machine, this product will allow you to share the sewing machine via the bundled SX Virtual Link.



TIP

- The SX Virtual Link is compatible with Wndows 2000/Windows XP.
- This product can connect to one sewing machine.

- Storage server

This product supports the NetBEUI/NetBIOS protocol which will allow you to share the **sewing machine's storage memory**.



TIP

- This product can connect to one sewing machine.

Specification

Hardware Specification

CPU

32bit RISC CPU

Memory

RAM :8MByte

FlashROM :1MByte

Network Interface

IEEE802.11b compatible CF card

USB Interface

USB2.0 Full Speed(A type)

Other

Push switch :1

LED :Status(Orange), Link(Green), Infra(Green)

Software Specification

Supported Protocol:

TCP/IP, NetBEUI/NetBIOS

TCP/IP:

Network Layer: ARP, RARP, ICMP, IP, IPv6, ICMP6

Session Layer: TCP, UDP

Application Layer: LPD, TELNET, BOOTP, SNMP, HTTP, DHCP, IPP, #9100, DNS, NetBIOS, FTP, POP3, SMTP, SNTP



- An IP address should be assigned by using the setup utility.

NOTE

NetBEUI/NetBIOS:

SMB, NetBIOS

Using Wireless Communication

This product operates at 2.4GHz

No radio license is required to use this product. Take note of the following points.

Do not use next to the following.

- Microwave, scientific instruments, pacemaker or other medical equipment.
- Licensed radio station in a factory.
- Small power radio station (a non-licensed radio station)

The above equipment may use the same band. If you use this product near this equipment, the radio waves from this product and the following devices may interfere with each other.

You should not use this product near cellular phone, TV, Radio.

A cellular phone, TV, and radio use a different radio band than our product. Generally if they are used near our product, it will not cause a problem. However, when they approximate this product, sound or image noise can happen.

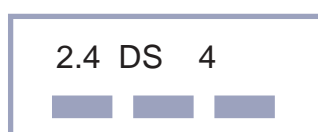
If there is reinforced concrete/metal between wireless devices, they may not connect.

This product can connect through wood or glass, but can have trouble communicating through reinforced concrete/metal.

Wireless Equipment for 2.4GHz band

This band of equipment is used by the microwave, industry, science, medical equipment and licensed in room or low power (non licensed)radio stations.

- Before you use this equipment, verify that it will not interfere with other broadcasting.
- If interference happens, stop using the equipment or change the band. Contact us to discuss ways of avoiding interference (example: create the wall).



2.4 : The frequency of this device is 2.4Ghtz.

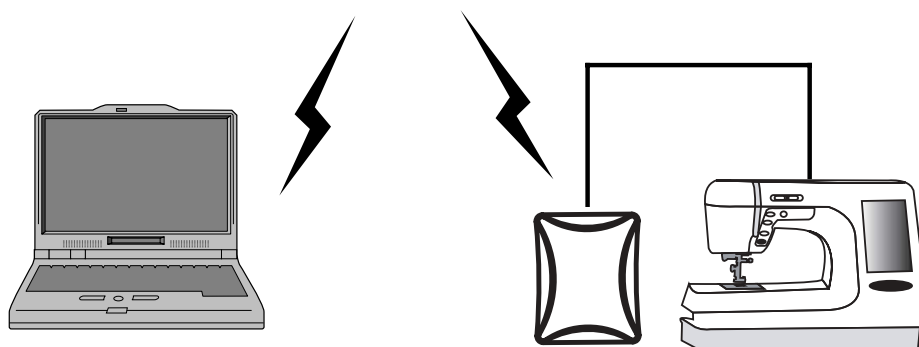
DS : The modulation used is DS.

4 : The range of interference is (<=40m).

   : Different channels can be used to avoid interference.

<AdHoc mode>

Each wireless product connects directory.



Connect this product to the sewing machine using a USB cable.

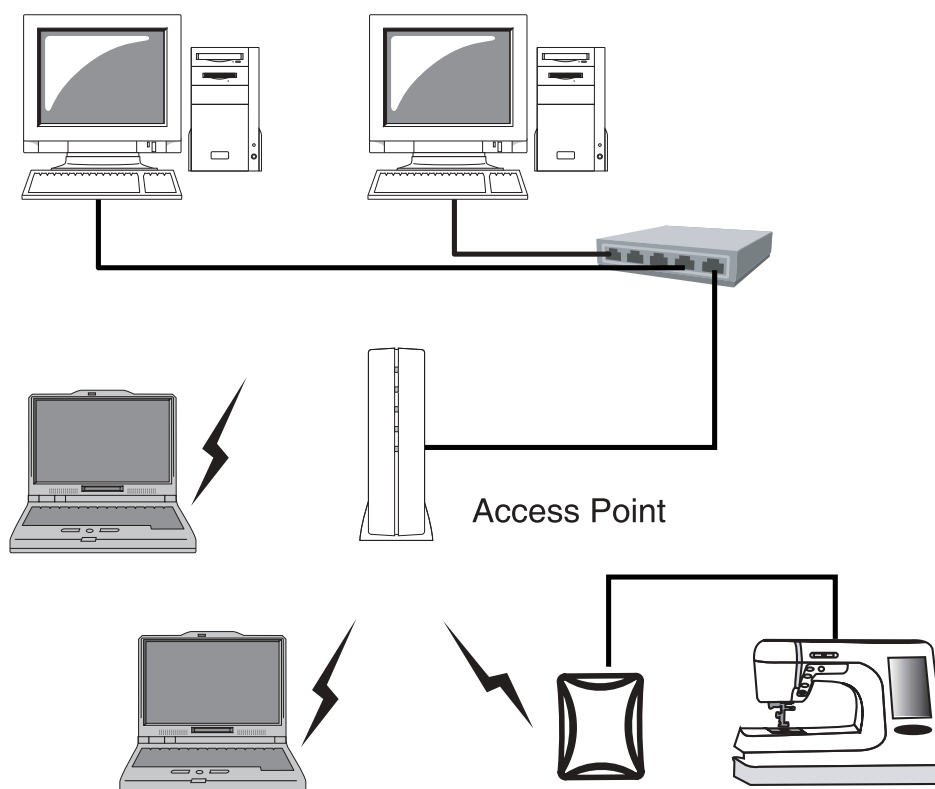


NOTE

The PC connects directly to our product in AdHoc mode.

<Infrastructure mode>

In Infrastructure mode this product connects through an access point. An Access point allows communication between wired and wireless environments.



Connect this product to the sewing machine using a USB cable.



NOTE

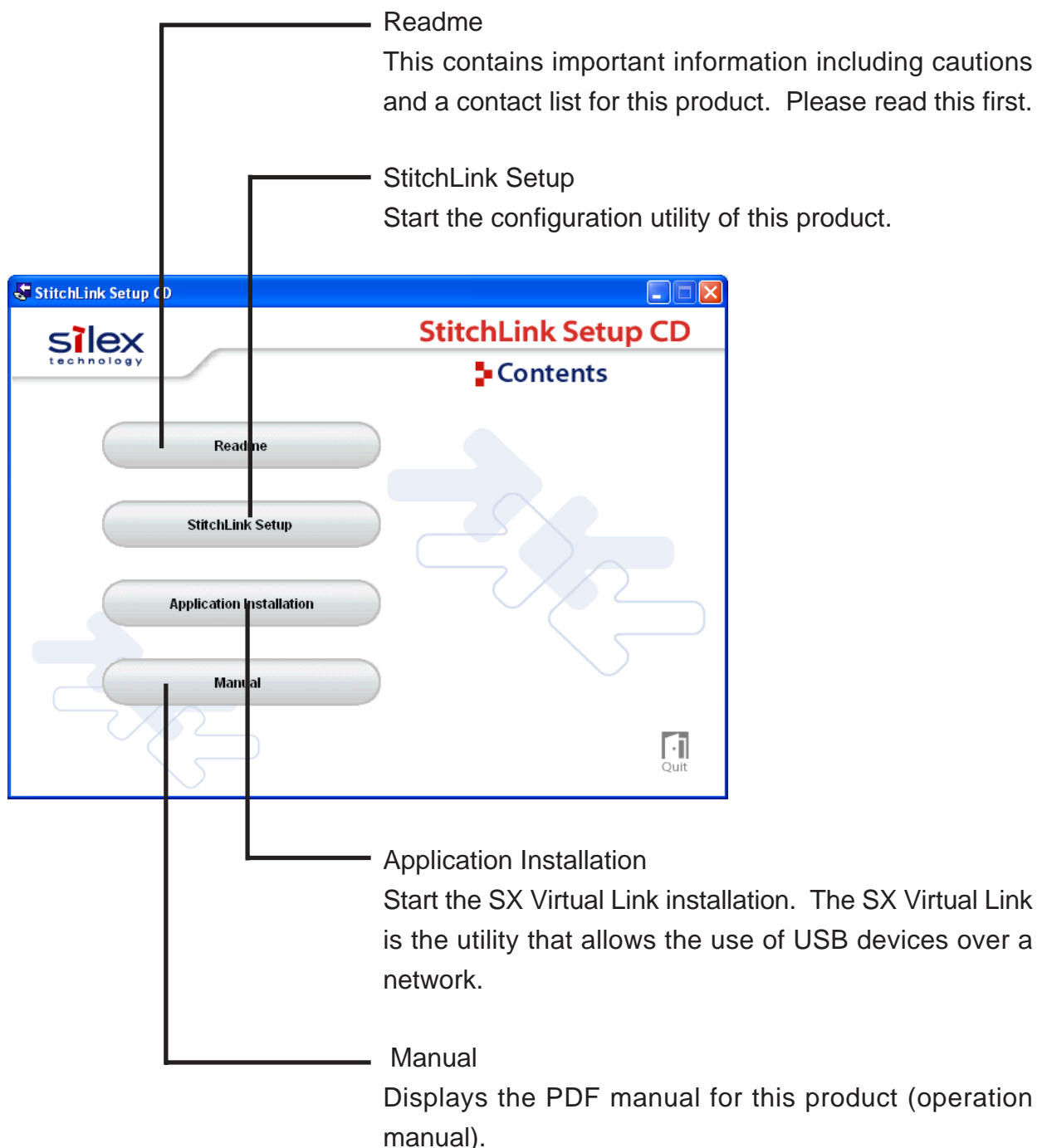
- The following are the two ways to put this product into Infrastructure mode.
- 1. Set the mode to be Infrastructure during the configuration.
- 2. After boot, hold down the push switch.

3. StitchLink Setup CD

Boot StitchLink Setup CD

The **StitchLink Setup CD** includes the configuration utility, the USB device connection utility, and the PDF users manual.

< Screen menu >



4. Setting up This Product

This chapter how to setup this product as a sewing machine server.

Configure This Product

There are two different ways of configuring this product that will be discussed. This section will also cover setting up the software needed to us this product as a sewing machine server.

Setup using the StitchLink Setup Utility

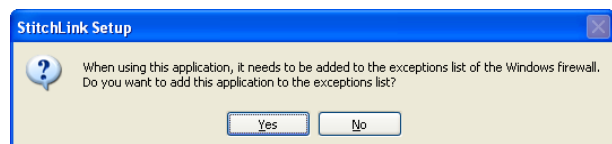
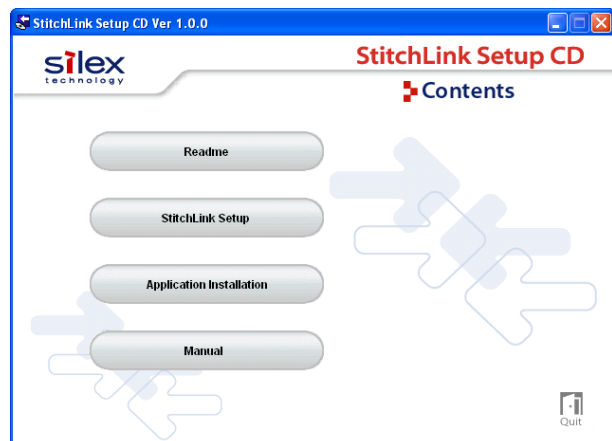
When setting up in Windows 2000 and Windows XP, Administrator rights are required.

1. Put into the CD included with this product into your Windows PC. The screen to the right will appear. Select **StitchLink Setup**.

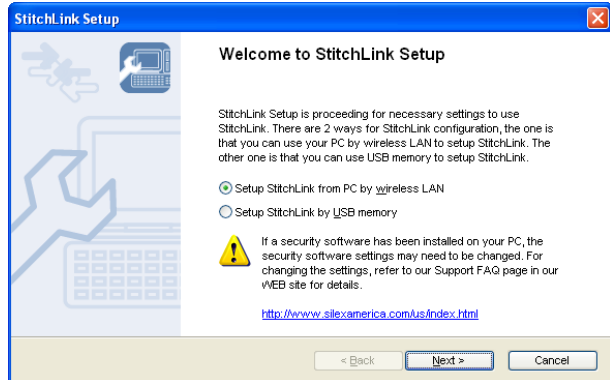


TIP

- If the screen does not appear automatically, open **My Computer**, select the CD-ROM drive and execute **Autorun.exe**.
- When in a Windows XP environment (SP2 or higher), the following message will be displayed. Select **Yes**.



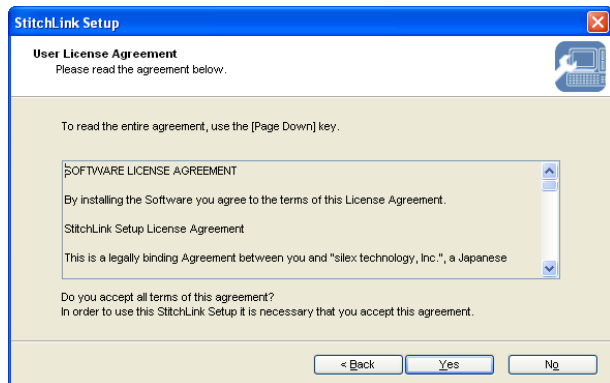
2. Select **Setup StitchLink from PC by wireless LAN**. Click **Next**.



3. Click **Yes** if you agree to the license agreement.



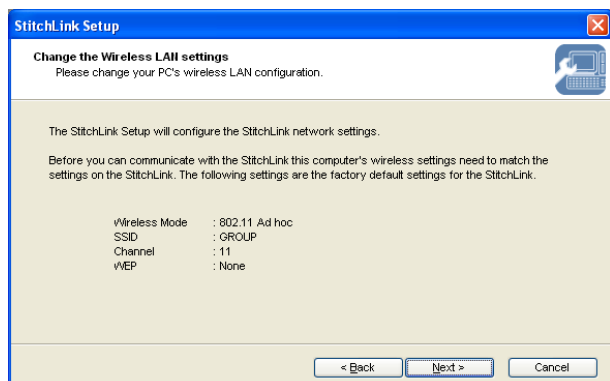
- If you do not agree to the license agreement, you cannot use our products.



4. Verify the PC's wireless settings match those on this product. Then click **Next**.



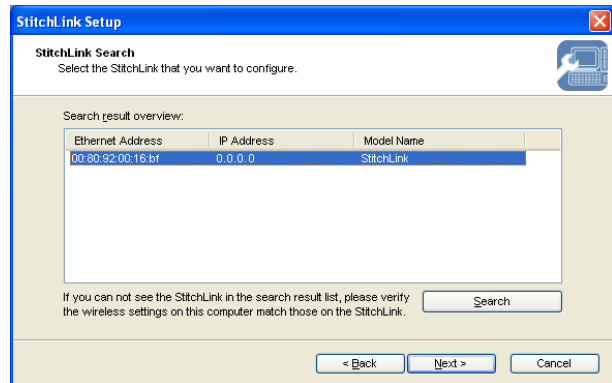
- The displayed parameters are the product's factory defaults. If this product and the PC have different wireless parameters, they cannot communicate. If needed, change the PC's wireless parameters to match this product.



5. Select this product in search list. Then click **Next**.



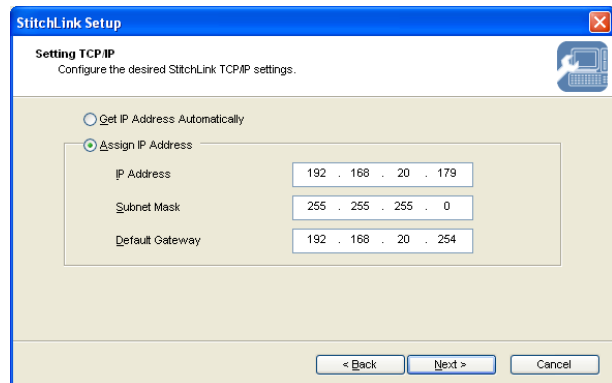
- If you cannot find this product in search list, click **Search**.
- If you have more than one this product in search list, use the Ethernet address of product to determine which to select.



6. Configure the each addresses this product is assigned, then click **Next**.



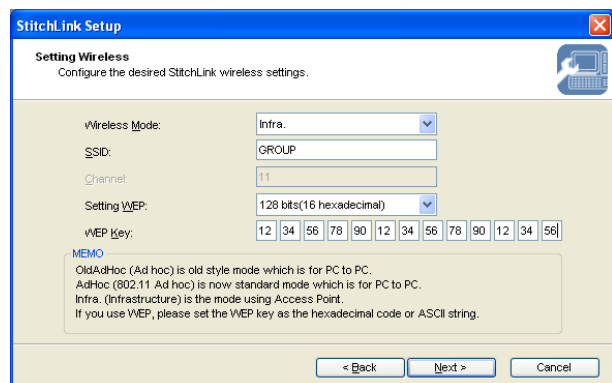
- To assign the address using a DHCP BOOTP server, select **Get IP Address Automatically**.



7. Change the wireless parameters to match that of your network environment. Click **Next**.



- The WEP key can be entered as a pass phrase or the actual key. When using the pass phrase the key will be created automatically for you.

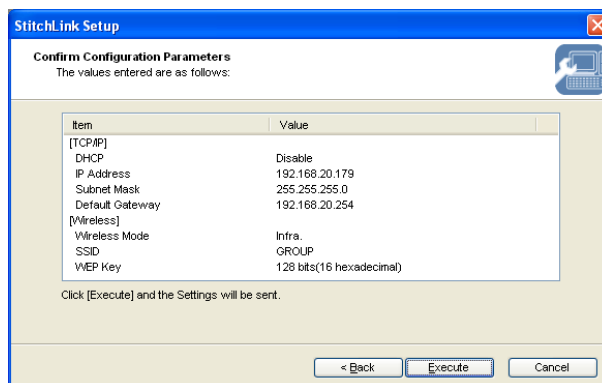


8. Verify the parameters for this product.
If the parameter is correct, click **Execute**.

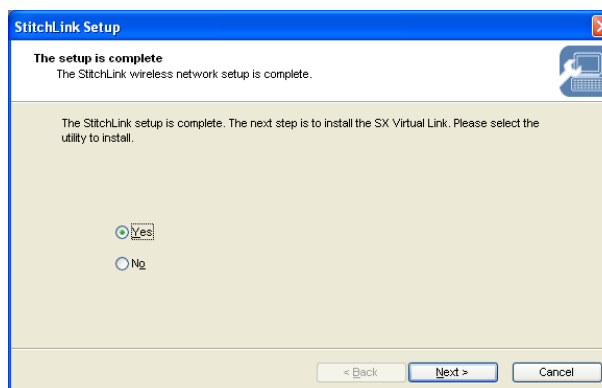


Note

- This product will receive the parameters via the network and this product will reboot.



9. This product configuration is now complete.



Note

- If you want to use the SX Virtual Link to communicate with your sewing machine , select **Yes**.
-> Go to 2 on page 4-9.
- If you want to use the NetBIOS protocol to communicate with your sewing machine, select **No**.
-> Go to page 6-1.

Set up Using a USB Storage Device

This product can be configured using USB storage device. Once the settings are saved to USB storage device, the USB storage device can be used to configure this product.

Attach the USB storage device to a PC. It should appear as a drive on the PC.

If this device is used with a USB device, remove the power and USB cable from the device and follow the steps below.



- It is possible that this product will not recognize the USB storage device. If this occurs refer to **Setup using the StitchLink Setup Utility** for setup instructions.
- The USB storage device must have a type A connector.

1. Put into the CD included with this product into your Windows PC. The screen to the right will appear. Select **StitchLink Setup**.



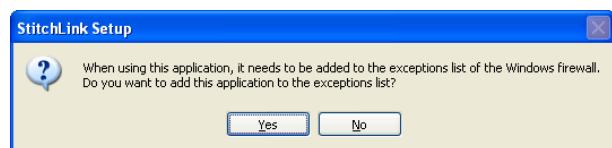
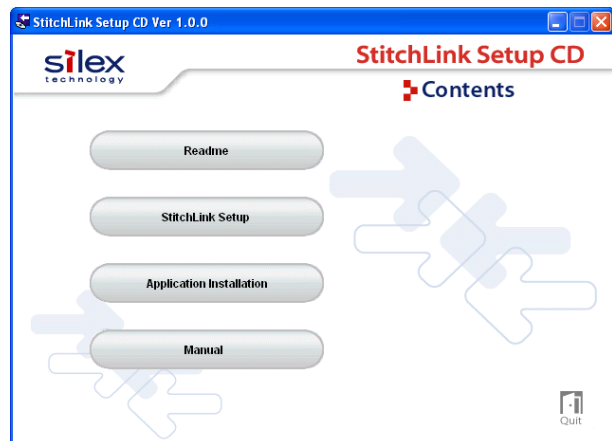
Note

- When the CD is inserted, the menu screen will appear automatically.
- If the screen does not appear automatically, open **My Computer**, select the CD-ROM drive and execute **Autorun.exe**.

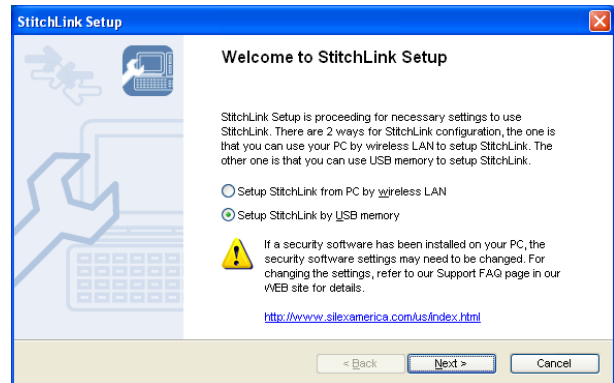


TIP

- When in a Windows XP environment (SP2 or higher), the following message will be displayed. Select **Yes**.



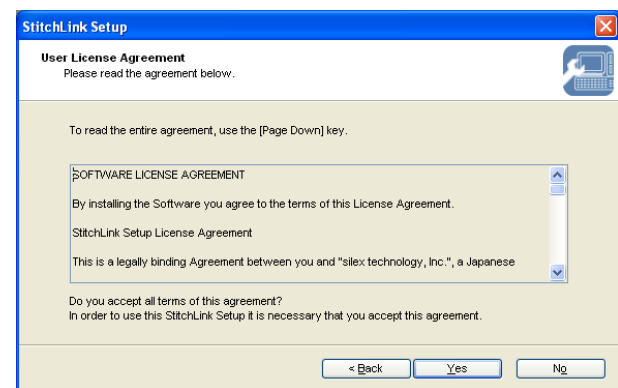
2. Select **Setup StitchLink by USB memory**. Click **Next**.



3. Click **Yes** if you agree to the license agreement.



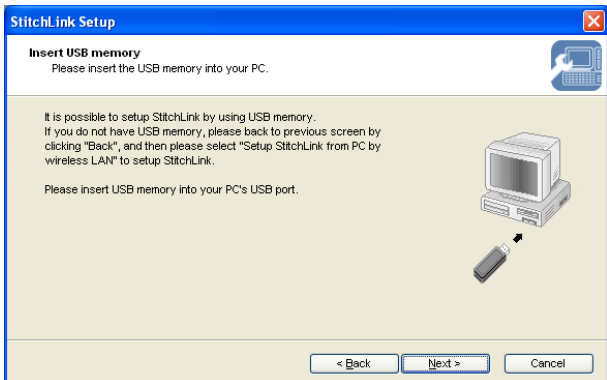
- If you do not agree to the license agreement, you cannot use our products.



4. Connect the USB storage device to the PC. Click **Next**.



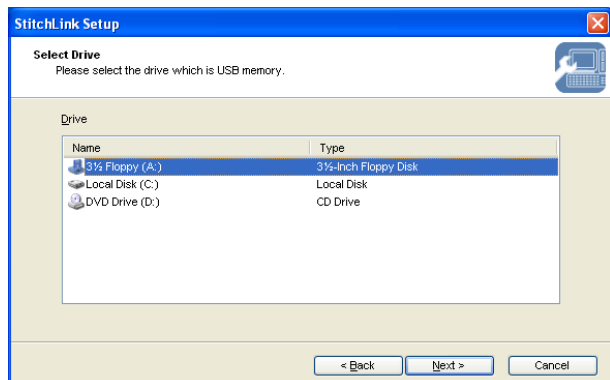
- Refer the USB storage device documentation.



5. Select the USB storage device drive, Click **Next**.



- If the setup process is canceled, start again from the beginning.



6. Configure the each addresses this product is assigned, then click **Next**.



Note

- To assign the address using a DHCP/BOOTP server, select **Get IP Address Automatically**.

7. Change the wireless parameters to match that of your network environment. Click **Next**.



Note

- The WEP key can be entered as a pass phrase or the actual key. When using the pass phrase the key will be created automatically for you.

8. Verify the parameters for this product. If the parameter is correct, click **Execute**.



Note

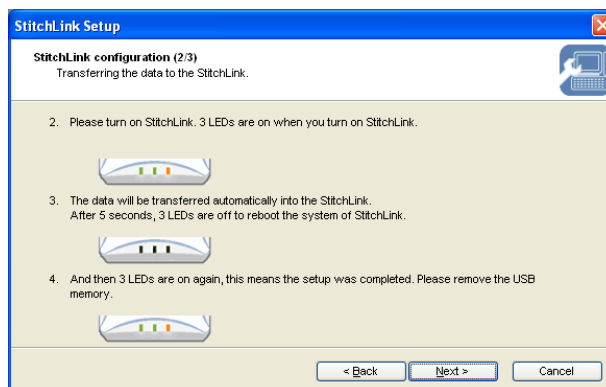
- Once the information has been written to the USB storage device, remove the USB storage device from your PC.
- A **config.txt** file is created at the root directory of a USB storage device.

9. Disconnect the AC adapter from this product. Attach the USB storage device to the USB port of this product.

10. With the USB storage device to this product, connect the AC adapter and power up this product.



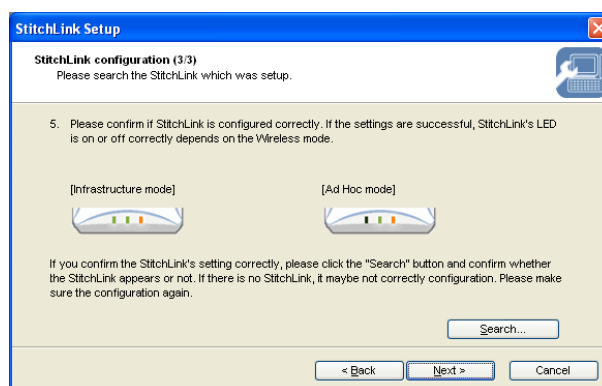
- This product will read the configuration saved on USB storage device and then will reboot. This product will take about 15 seconds to reboot. Do not disconnect the USB storage device while rebooting.



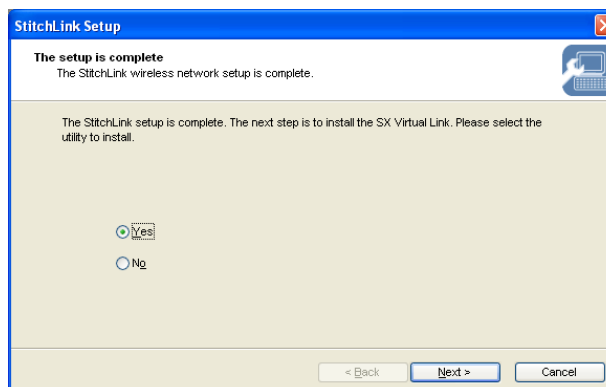
11. Check the LED status. Click **Next**.



- This product will read the configuration saved on USB storage device and then will reboot. This product will take about 15 seconds to reboot. Do not disconnect the USB storage device while rebooting.



12. This product configuration is now complete.



Note

If you want to use the SX Virtual Link to communicate with your sewing machine , select **Yes**.
-> Go to 2 on page 4-9.

If you want to use the NetBIOS protocol to communicate with your sewing machine, select **No**.
-> Go to page 6-1.

Application Installation

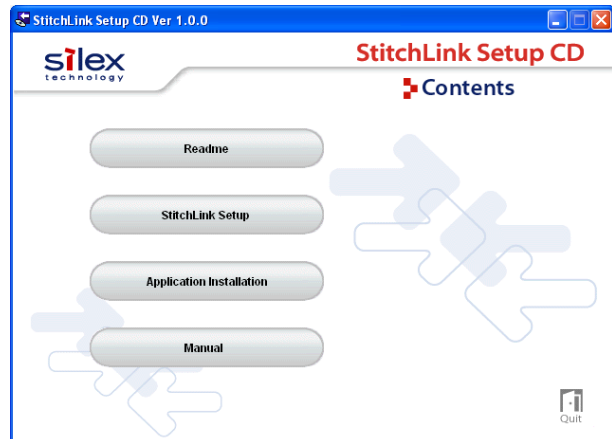
This section explains the method of installing **SX Virtual Link**.

1. Put into the CD included with this product into your Windows PC. The screen to the right will appear. Select **Application Installation**.



TIP

- If the screen does not appear automatically, open **My Computer**, select the CD-ROM drive and execute **Autorun.exe**.



2. Click **Next**.

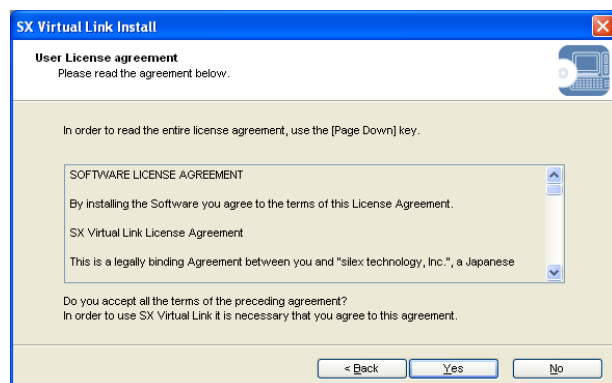


3. Click **Yes** if you agree to the license agreement.



TIP

- If you do not agree to the license agreement, you cannot use our products.

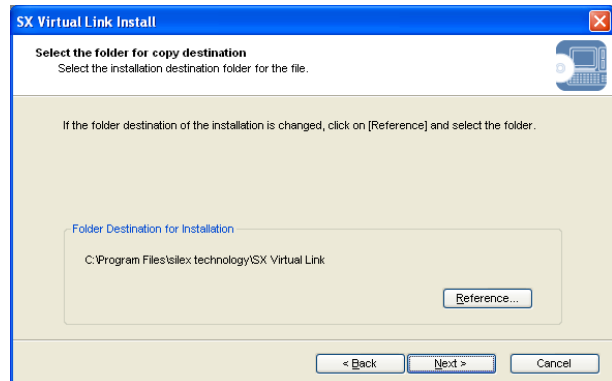


4. Verify the destination directory, and click **Next**.

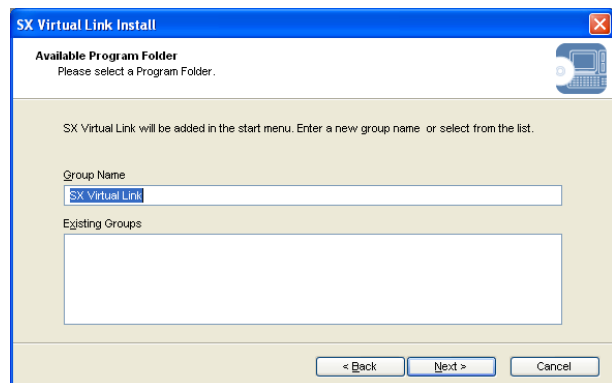


Note

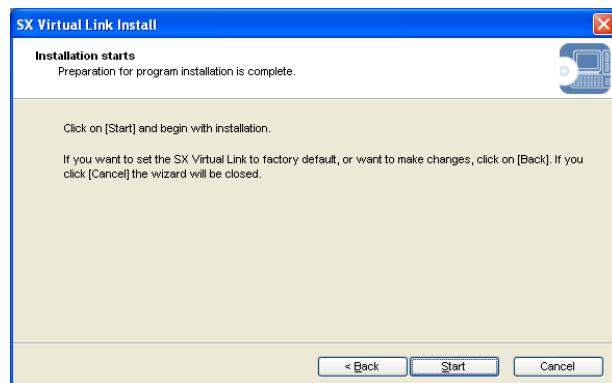
- Default destination directory path is **c:\Program Files\silex technology\SX Virtual Link**. Click **Reference** to specify the destination directory.



5. Specify the group name to be registered at the start menu. Click **Next**.

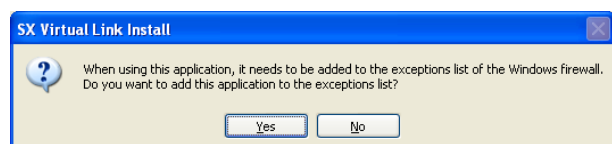


6. Click **Start**.

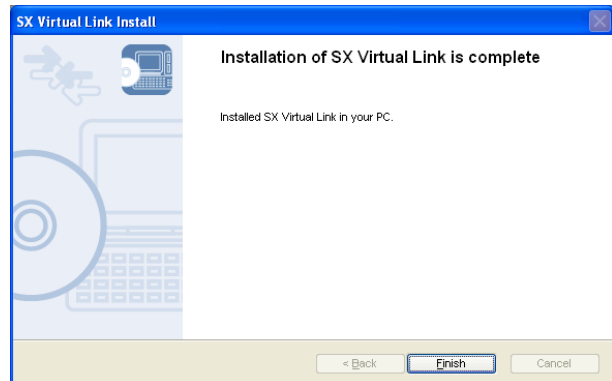


TIP

- When in a Windows XP environment (SP2 or higher), following message will be displayed. Select **Yes**.



7. Click **Finish**.



The SX Virtual Link installation is complete

The Chapter **5 How to Use the SX Virtual Link** section will explain how to configure the SX Virtual Link.

5 How to Use the SX Virtual Link

This chapter explains how to use the SX Virtual Link utility to operate this product from a PC. Using the SX Virtual Link enables you to share sewing machines connected to this product over a network.

Use the SX Virtual Link

Connect to a USB device

Start the SX Virtual Link, and use the sewing machine connected to this product over a network.

1. Click **Start - Programs - SX Virtual Link - SX Virtual Link**.

2. SX Virtual Link main screen appears.



The sewing machine connected to this product can be displayed by clicking this product in the list. Select the sewing machine you want to connect.

Click **Connect**.

3. The Windows Plug and Play automatically creates a suitable operating environment for the selected device.



TIP

- The bundled device driver for your sewing machine may need to be installed before using the USB device for the first time. For the installation of the software, refer to the operation manual for your sewing machine, or follow the procedures displayed after clicking **Connect** in the SX Virtual Link.
- If the sewing machine you want to connect is in use by another PC, wait until the user disconnects from the device.

4. The network connection between your PC and the sewing machine has been established. Refer to the operation manual of the sewing machine to use the functionalities.



TIP

- Do not disconnect the USB cable or click disconnect in the SX Virtual Link while the sewing machine is being accessed. This may cause the PC or the sewing machine to become unstable. If either happens, reboot this product, sewing machine, and PC, and then use them again.
- The sewing machine performance may slow down when it experiences multiple network access through this product simultaneously.

5. After using the sewing machine, disconnect the network connection, and close the SX Virtual Link .



Click **Disconnect**.



Note

- The icon of the SX Virtual Link can be added to the task tray in Windows. The network connection can be established by clicking the icon in the task tray.
- If **Disconnect automatically when application is closed** is selected in the device properties dialog box, the network connection will be disconnected automatically when the sewing machine application software is closed.
- Right clicking this product in the device server list will show the following menu. The described operations are available.

Right click this product	
Connect to all	Connect to all USB devices.
Disconnect from all	Disconnect from all USB devices.
Display the WEB page	Display the WEB page of this product.

Right click the USB device	
Connect	Connect to the selected device.
Disconnect	Disconnect from the selected device.
Add to Favorites	Add the selected device to Favorites.

Add to Favorites

To quickly access the sewing machines you frequently use, they can be grouped by adding them to Favorites.

1. Click **Start - Programs - SX Virtual Link - SX Virtual Link**.

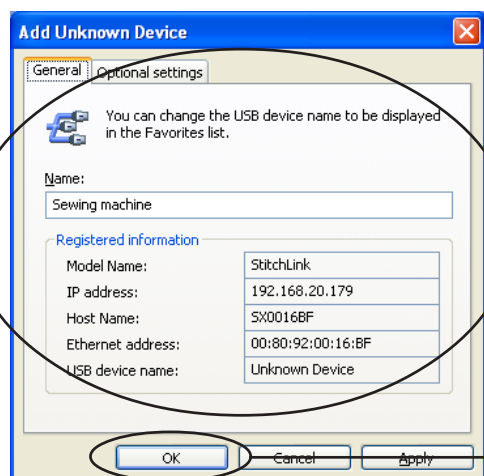
2. SX Virtual Link main screen is displayed.



Select the sewing machine to be connected in the list.

Click **Add to Favorites**.

3. Device registration screen is displayed.



Enter a device name if you desire to change.

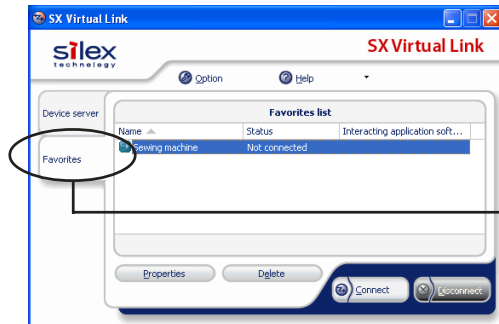
Click **OK**.



Above settings for the USB device can be changed later.

Note

4. Adding the USB device to **Favorites** has been complete. Click **Favorites** in the main screen, and connect or disconnect the USB device in the **Favorites** screen.



Click **Favorites**.



Note

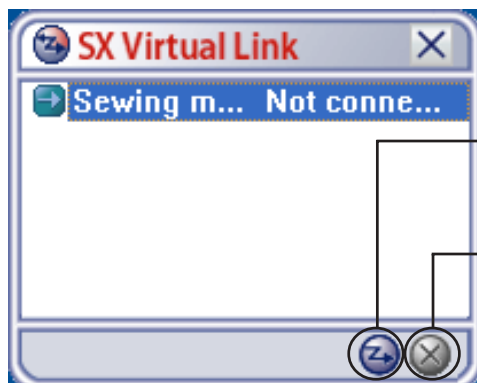
- When multiple sewing machines are added to Favorites, multiple sewing machines can be selected to connect or disconnect without selecting each device to connect or disconnect.
- Right clicking a sewing machine in the Favorites screen will show the following menu. The described operations are available.

Connect	Connect to the selected device.
Disconnect	Disconnect from the selected device.
Delete	Delete the selected device from Favorites.
Properties	Display the properties of the selected device.

Display in the compact mode

The **Compact Mode** screen enables you to use the SX Virtual Link by displaying Favorites in a minimized window on your desktop.

1. Right-click the SX Virtual Link icon displayed in the task tray, and select **Compact Mode** from the displayed menu. A minimized Favorites window is displayed.
2. Connect to or disconnect from the device by clicking the buttons in the bottom of the compact mode screen.



Connect button

Disconnect button

SX Virtual Link definitions

This section explains various buttons and configuration parameters for the SX Virtual Link.

SX Virtual Link screens

When starting the SX Virtual Link, the main screen will appear.

< Main screen >



< Favorites screen >

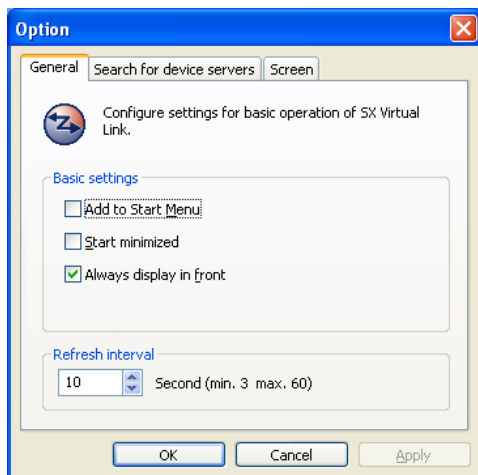


Common buttons	
Connect	Connect your PC to the sewing machine via this product.
Disconnect	Disconnect your PC from the sewing machine via this product.
Option	Display Option screen of the SX Virtual Link for configuration.
Help	Display SX Virtual Link Help, About SX Virtual Link, and silex web site.
Device server	Display main screen (Device server list).
Favorites	Display Favorites screen.
Main menu buttons	
Add to Favorites	Add the selected sewing machine to Favorites.
Search	Search for this product on a network.
Favorites buttons	
Delete	Delete the selected sewing machine from the Favorites screen.
Properties	Display properties configuration screen for each sewing machine.

Optional settings dialog

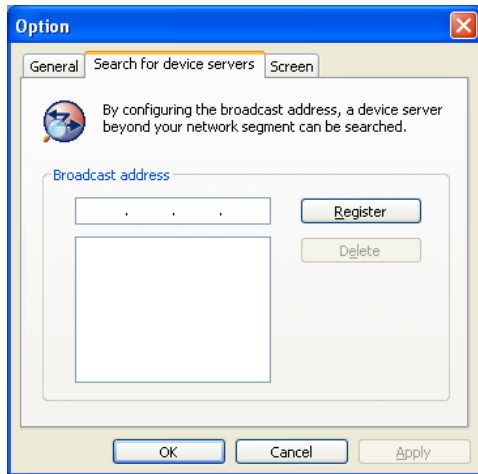
General settings for the SX Virtual Link can be configured. Click **Option** in the main screen or Favorites screen to display **Option screen**.

<General>



- Add to Start Menu
Register the SX Virtual Link to **Start Menu** (Default OFF).
- Start minimized
Minimize the SX Virtual Link when started (Default:OFF). A minimized icon is displayed in task bar.
- Always display in front
Show the SX Virtual Link window in front (Default:OFF). Another window with the same setting may be displayed in front of the SX Virtual Link window.
- Refresh interval
Configure the interval time for device status update (Default:10 seconds).

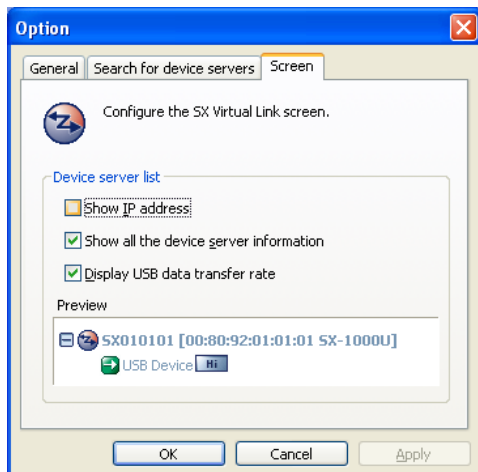
<Search for device servers>



- Broadcast address

A specific IP address segment can be designated for searching this product.
When no IP segment is specified, devices in a local segment are searched.

<Screen >



- Show IP address

When displaying this product on the main screen, display the IP address assigned for this product.(Default:Off) If this setting is not selected, the host name is displayed.

- Show all the device server information

When displaying this product on the main screen, display all the device server information.
(Default:ON)

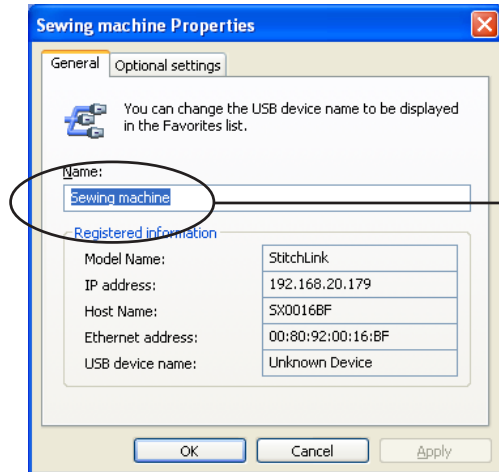
- Display USB data transfer rate

Display the detected USB device data transfer speed in Hi, Full, or Low on the main screen. (Default:ON)

Device properties dialog

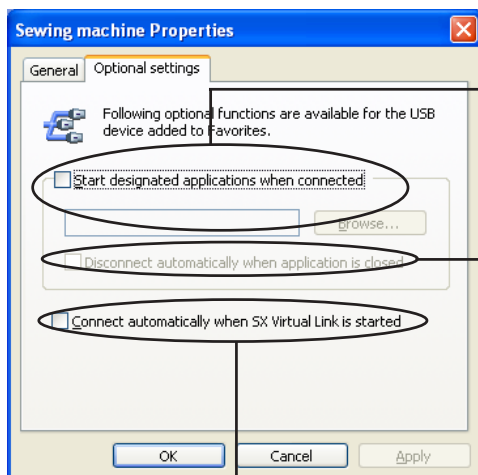
Detailed settings for the sewing machine added to the Favorites can be configured. Click **Properties** in the **Properties screen**.

< Basic settings >



A name for the sewing machine in the Favorites list can be changed.

< Optional settings >



After connecting to a sewing machine, a designated application can be interacted to start automatically (Default Off).

When the designated application is closed, disconnects the network connection automatically between your PC and the sewing machine connected to this product (Default Off).

When the SX Virtual Link is started, connects to the sewing machine automatically (Default Off).

6. Storage Server Function

This product allows a USB storage device (sewing machine's storage memory) to be shared across a network by using NetBEUI or NetBIOS over TCP/IP protocol.



NOTE

- USB storage device cannot be shared across a USB HUB, it must be directly attached to the USB port of this product.
- USB storage device inserted into a MFP connected to the USB port of this product may be shared across the network.

Sharing a USB Storage Device

In order to perform reading and writing to a USB storage device linked to this product across the network, **NetBEUI** and the **Microsoft network client** must be installed on the personal computer.

Share a USB Storage Device in Windows 2000

Verify the network configuration in Windows 2000 (NetBEUI)

Verify that **NetBEUI** and **Client for Microsoft Networks** have been added in the network configuration of Windows 2000.

1. Select **Start - Settings - Control Panel - Network and Dial up Connection**.
2. View the properties of **Local Area Connection**.
3. Verify that **Share the Microsoft network connection service** has been added.



NOTE

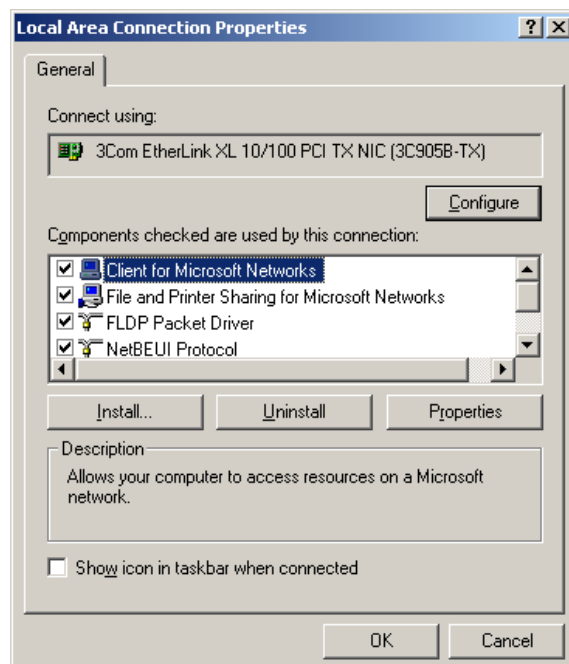
- If **Share the Microsoft network connection service** was not displayed, click **Install** and select client - **Share the Microsoft network connection service**.

4. Verify that the **NetBEUI Protocol** has been added.



NOTE

- If the **NetBEUI Protocol** was not displayed, click **Install** and select **Protocol** then **NetBEUI Protocol**.



Verify the network configuration in Windows 2000(NetBIOS over TCP/IP)

Verify that **Internet Protocol (TCP/IP) - Client for Microsoft Networks** have been added as well as NetBIOS in **Internet Protocol(TCP/IP)**.

1. Select **Start - Settings - Control Panel - Network and Dial up Connection**.
2. Open the properties of **Local Area Connections**.
3. Verify that **Client for Microsoft Networks** has been added.



NOTE

- If you cannot find **Client for Microsoft Networks** in the list, click **Install** then select **Client - Client for Microsoft Networks**.

4. Verify that **Internet protocol (TCP/IP)** has been installed.



NOTE

- If you cannot find **Internet protocol (TCP/IP)** in the list, click **Install** then select **Protocol - Internet Protocol**.

5. Select **Internet Protocol (TCP/IP) - Properties - Detail - WINS** tab, and make sure that the enable NetBIOS over TCP/IP is selected.

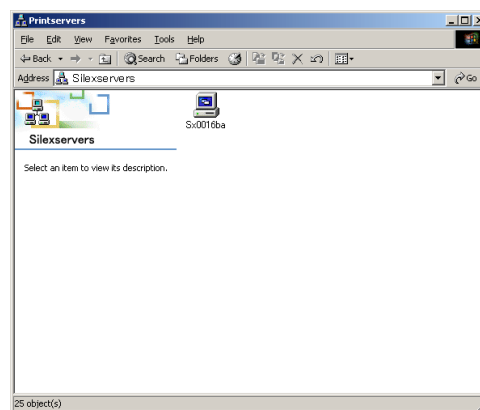
Use a USB storage device in Windows 2000

This section will explain how to use a USB storage device in Windows 2000 environments.

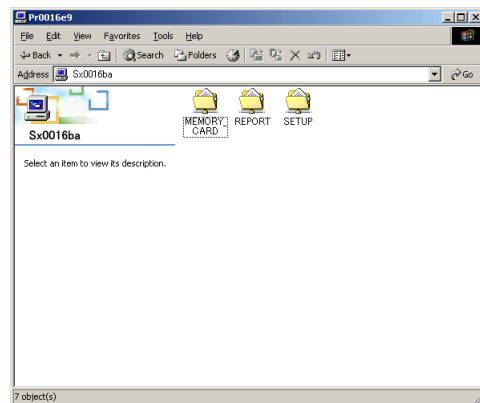
1. Connect a USB storage device to this product.
2. Select **My network - Network - All networks - Microsoft Windows Network**, and open the **Silexservers** in workgroup.
3. Double Click this product's icon. The name will be displayed as **Sx** and the last 6 digits of the Ethernet Address.

Example:

If your product's Ethernet Address is **00:80:92:00:16:ba**, our product's computer name is **Sx0016ba**.



4. Double click the folder **MEMORY_CARD** for the USB storage device to share the folder over the network.



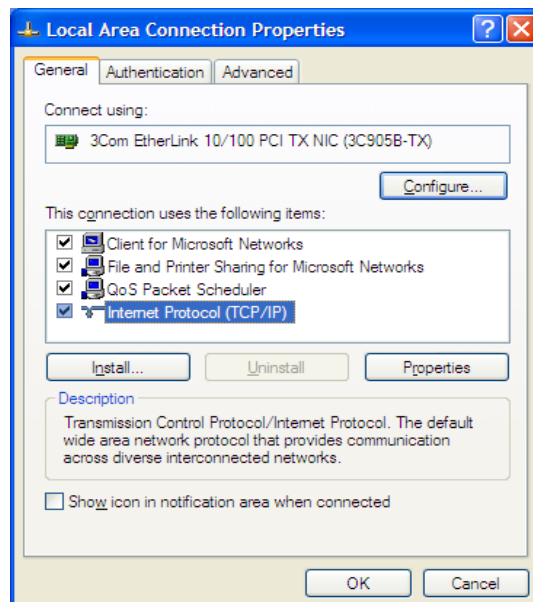
Share a USB Storage Device in Windows XP

Verify the network configuration in Windows XP

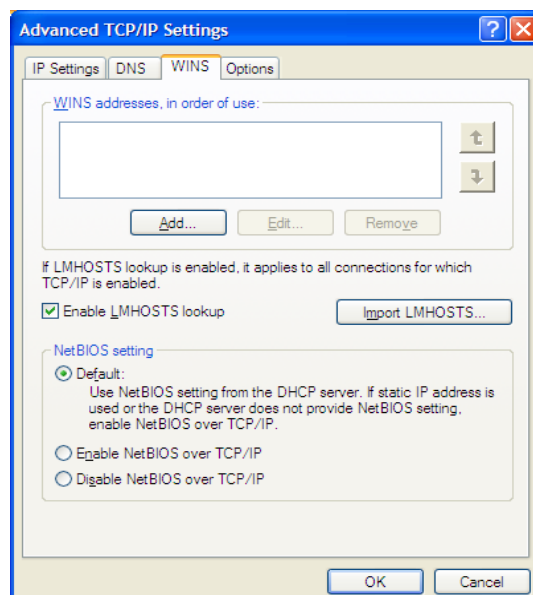
Verify that NetBIOS has been configured in **Internet Protocol (TCP/IP)** on Windows XP and **Client for Microsoft Networks** have been added.

1. Select **start - Control Panel - Network and Internet Connection - Network Connection**.

2. Open the properties of **Local Area Connection**.



3. Open **Detail - WINS**, make sure to select **Default** or **Enable NetBIOS over TCP/IP** in NetBIOS configuration.

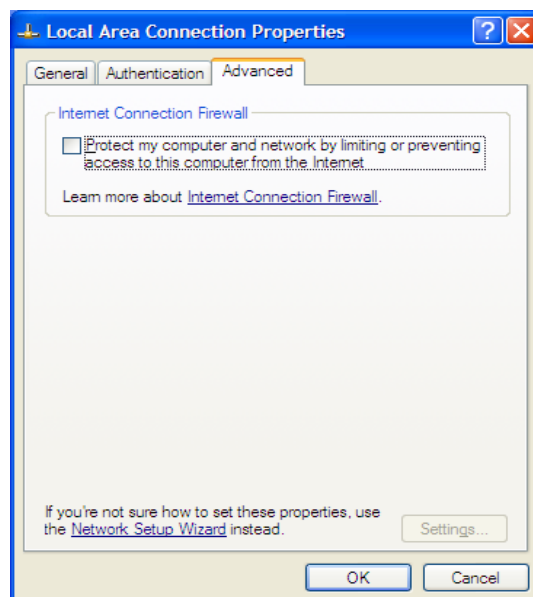
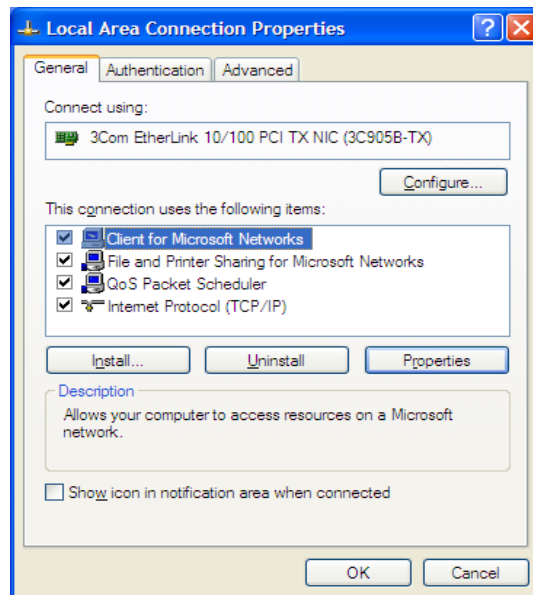


5. Verify **Client for Microsoft Networks** has been added.



TIP

- If you use NetBIOS over TCP/IP protocol in Windows XP, uncheck the **Control access from internet.** in **Properties of Local Area Connection - Detail Setting.**



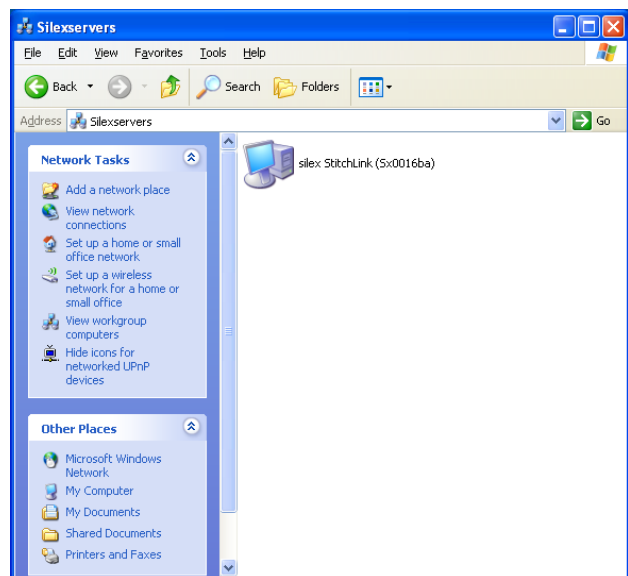
Use a USB storage device in Windows XP

This section will explain how to use a USB storage device in Windows XP environment.

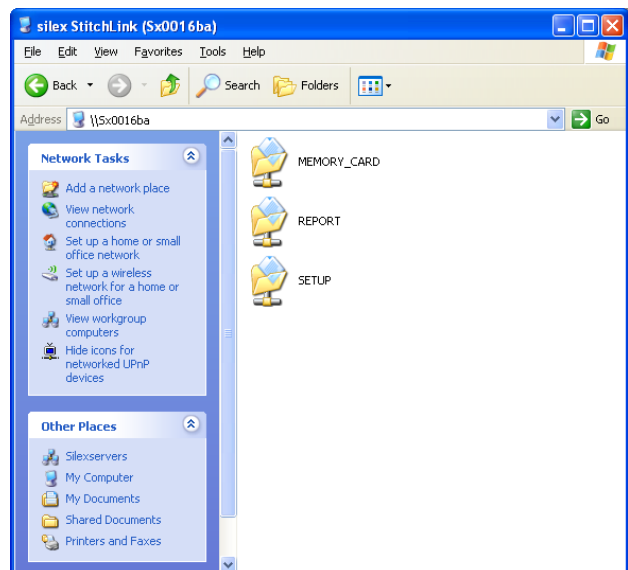
1. Connect a USB storage device to this product.
2. Select **My Network Places - View workgroup computers - Microsoft Windows Network**, open the **Silexservers** in workgroup.
3. Double Click this product's icon. The name will be displayed as **Sx** and the last 6 digits of the Ethernet Address.

Example:

If your product's Ethernet Address is **00:80:92:00:16:ba**, our product's computer name is **Sx0016ba**.



4. Double click the folder **MEMORY_CARD** for the USB storage device to share the folder over the network.



7. Questions and Answers

This section contains some Frequently Ask Questions (FAQ) and the corresponding answers. For a more detailed and up to date FAQ, refer to our web site.

The main menu does not start after inserting the CD-ROM.

- If your computer does not support autorun, the menu will not start automatically. Execute Autorun.exe in the root directory of the CD-ROM.

This product is not found after searching in the configuration utility (StitchLink Setup) or this product is not recognized on the network.

- Check the following and retry.
 1. Verify that the StitchLink is powered up.
 2. Verify that the link LED is on.
 3. If using an access point is the Infrastructure mode LED on?
 4. Do the SSID WEP key and channel match the wireless network environment?
 5. Is the network cable connected to the access point? Is the access point communicating properly?
 6. If the PC is connected to a LAN, is the LAN cable connected properly? Can it communicate with the access point?
 7. Isn't the standard firewall function of your OS or the firewall function of your security software (e.g. VirusBuster from Trend Micro) activated?
 8. Restore factory defaults and follow the configuration procedure outlined in "Setting up This Product".

Can this product be returned to a factory default?

- It can be returned to a factory default by using the push switch. Refer to the Chapter 2 **StitchLink**.

A USB storage device is not sharable.

- To share a USB storage device, you must use Windows.
- This product can support up to one USB storage device. Verify that a maximum of one devices are connected.
- Is the USB storage device powered up?

The device cannot be setup in Ad Hoc mode.

- The product can be changed to infrastructure mode by using the push switch. Refer to the Chapter 2 **StitchLink**.

Establishing a PC to StitchLink Wireless Connection

Verify the Operation System of your PC to select a setting procedure from below options.

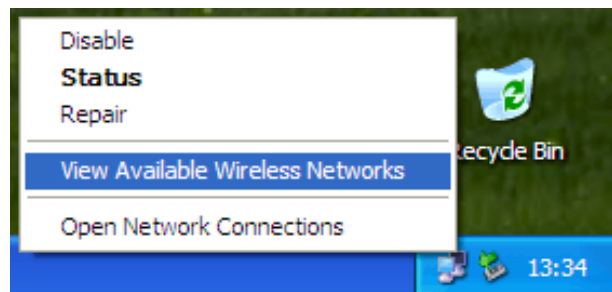
- When using Windows XP Service Pack 2

Follow the instructions in the Setup Guide bundled in this product.

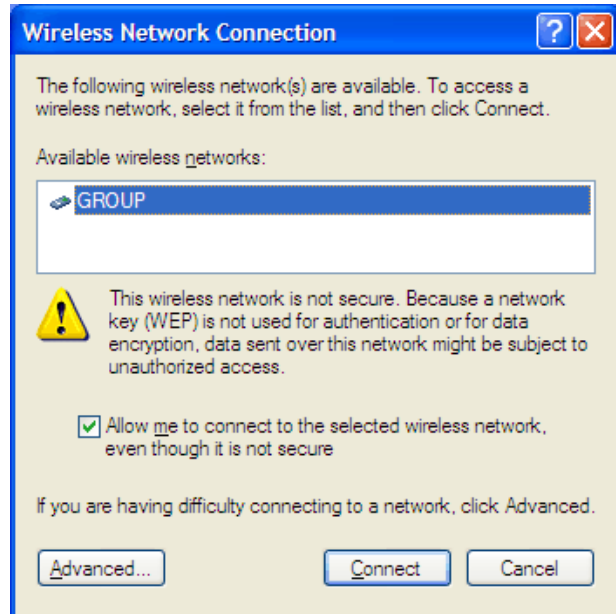
- When using Windows XP Service Pack 1

Follow the following procedures to complete the setup.

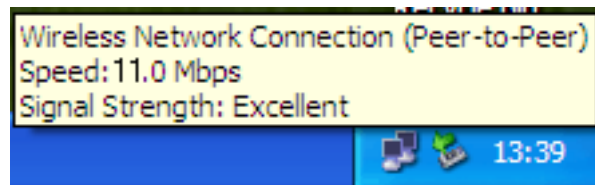
1. Verify the power of the StitchLink is turned on.
2. Click on the **wireless network** icon in the task tray displayed on the bottom right on the desktop. Click **View Available Wireless Networks**.



3. Select **GROUP** displayed in **Connect to Wireless Network** and check **Allow me to connect to the selected wireless network, even though it is not secure.** Then click **Connect**.



4. When the network icon (in the task tray displayed on the bottom right on the desktop) indicates that the PC is connected to the StitchLink(GROUP), the connection procedure is complete.



- When using Windows 2000

Refer to the manual of your Wireless LAN interface device to change the wireless setting as follows.

Wireless Mode	Ad hoc (802.11 Ad hoc mode)
SSID	GROUP
Channel	11
WEP	None

7. Questions and Answers	7-1
The main menu does not start after inserting the CD-ROM.	7-1
This product is not found after searching in the configuration utility (StitchLink Setup) or this product is not recognized on the network.	
7-1	
Can this product be returned to a factory default?	7-1
A USB storage device is not sharable.	7-2
The device cannot be setup in Ad Hoc mode.	7-2
Establishing a PC to StitchLink Wireless Connection	7-2

Appendix

Configuring via a Web Browser

This section explains how to access this product's web page by using a web browser. This product server has HTTP which enables you to check or change the configuration as well as checking the device status.

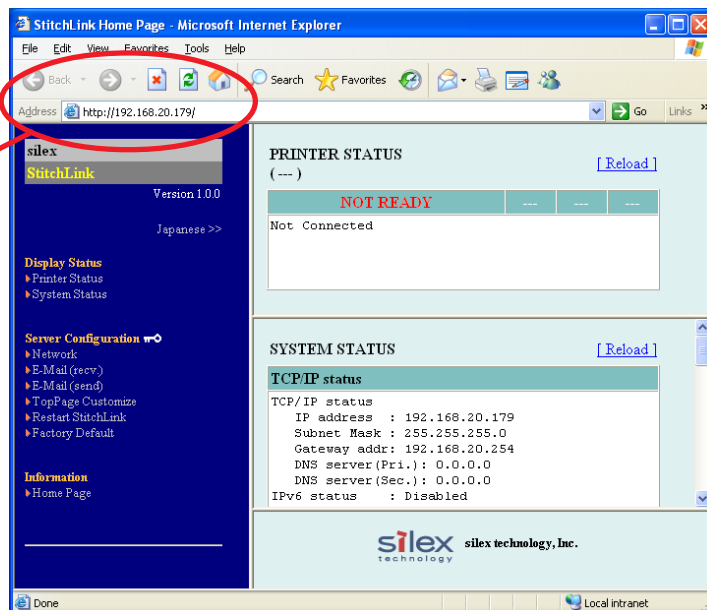


- IP address must be assigned to this product prior to success to the web page.
- TIP** - The web browser cannot be used for the initial configuration.

Connect to the This Product

To connect to this product, start a web browser, and input the IP address of this product.

If this product was assigned "192.168.20.179", enter [http://192.168.20.179/]

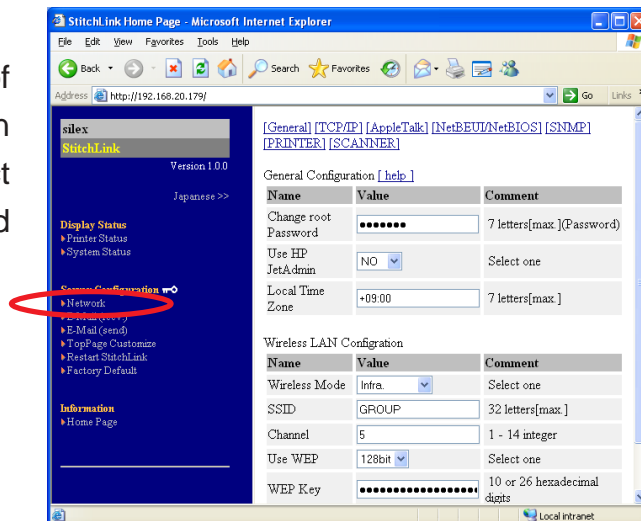


- Internet Explorer 4.0 and Netscape Navigator4.0 or newer are recommended.
- When you use other browsers, it must support HTTP1.0 (RFC1945) and HTML2.0 (RFC1866).
- The actual screens may vary from the examples in this manual between different web browsers you use.

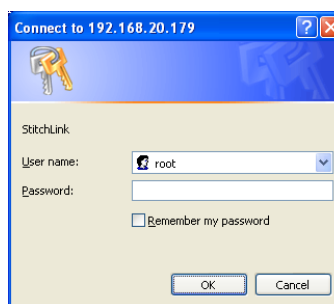
This Product HTTP Screens

<Network>

It is possible to change the configuration of this product by using a web browser. When changing the configuration of this product from a web browser, a user name and password are required.



- Input **root** for the username then **OK** or enter the password if you have created one. The default is no password.



Configuration Settings

This section explains the configuration settings of this product.

General Setup

Topic			Explain	Factory Default
Change root Password			Please enter the password(in ASCII TEXT). This password will be used for configuration changes via Telnet, Web page.	none
Use HP JetAdmin			Enable or disable compatible HP JetAdmin.	NO
Local Time Zone			Specify the local time zone.	+ 9:00
Wireless LAN	Wireless Mode	AdHoc	Ad hoc is called 802.11Ad hoc. Generally, it used PC to PC communication. When they connect, they use SSID.	AdHoc
		OldAdHoc	When they connect, they use SSID.	
		Infra	Connection mode via access point.	
	SSID		SSID is ID to connect to each device.	GROUP
	Channel		Channel is band to communication each device.	11
	Use WEP		Enable/Disable WEP operations. WEP is the one of encryption.	None
	WEP Key		64/128bit	0000000000

TCP Setup

Topic		Explain	Factory Default
TCP/IP Protocol		Enable or disable the TCP/IP Protocol	ENABLE
DHCP/BOOTP		Enable/Disable DHCP/BOOTP protocol operations. DHCP/BOOTP is a protocol, via which IP address gets assigned by the BOOTP server or DHCP server. If you use DHCP/BOOTP server, the DHCP/BOOTP server must be in the same segment as this product.	ENABLE
RARP		Enable/Disable RARP protocol operations. RARP is a protocol, via which IP address gets assigned by the RARP server. If you use RARP server, the RARP server must be in the same segment as this product.	ENABLE
IP Address		Setting this product IP address. The IP address must be 4 numbers, each between 0-255 (eg. 192.168.20.179).	0.0.0.0
SubnetMask		Setting this product subnet mask. The subnet mask must be 4 numbers, each between 0-255 (eg. 255.255.255.0). However, entering 0.0.0.0 would not be valid, and the subnet mask corresponding to the IP address would be used automatically.	0.0.0.0
Default Gateway		Setting the default gateway address. The default gateway address must be 4 numbers, each between 0-255 (eg. 192.168.100.240). If you use a gateway, the gateway must be in the same segment as this product. However, entering 0.0.0.0 would not be valid.	0.0.0.0
FTP/LPD Banner		Enable or disable banner during FTP/LPD.	NO
IPv6 Function		Enable or disable IPv6 function.	DISABLE
TCP#9100 Bi-Directional mode		Enable or disable TCP#9100 Bi-Directional mode.	DISABLE
DNS Server	Primary Server	Specify the Primary Server's IP address.	0.0.0.0
	Secondary Server	Specify the Secondary Server's IP address.	0.0.0.0
WINS Server	Primary Server	Setting the WINS server (primary) address. WINS server will resolve the IP address from the host name. Therefore you can use a hostname instead of the IP address when communicating. The values must be 4 numbers, each between 0-255 (eg. 192.168.100.10).	0.0.0.0
	Secondary Server	Setting the WINS server (secondary) address. WINS server will resolve the IP address from the host name. Therefore you can use a hostname instead of the IP address when communicating. The values must be 4 numbers, each between 0-255 (eg. 192.168.100.10).	0.0.0.0
	Scope ID	The scoop ID defines the computer group that recognized the registered host name.	Blank
IP Filter Config	Filter Mode	Setting of IP filter operations. Available options are "allow" and "deny". If you select "allow", only the data from the set IP address range are accepted. If you select "deny", the data from the set IP address range can not be received.	DENY
	Filter #0 Start address	Setting IP filter range. IP addresses to be filtered can be set to maximum 4 address ranges. If address range setting is not required, please enter the address range from "0.0.0.0" to "0.0.0.0".	0.0.0.0
	Filter #0 end address		0.0.0.0
	Filter #1 Start address		0.0.0.0
	Filter #1 end address		0.0.0.0
	Filter #2 Start address		0.0.0.0
	Filter #2 end address		0.0.0.0
	Filter #3 Start address		0.0.0.0
	Filter #3 end address		0.0.0.0

NetBEUI/NetBIOS Setup

Item	Explanation	Initial value (factory default)
NetBEUI Protocol	Enable or disable the NetBEUI Protocol.	ENABLE
NetBIOS over TCP	Enable or disable the NetBIOS Protocol.	ENABLE
Computer Name	Specify the computer share name.	"SXxxxxxx" (xxxxxx is the last 6 figures of the Mac address)
Workgroup	Specify the Workgroup name.	"SILEXSERVERS"
Comment	Enter a comment.	"silex StitchLink"
Browse Master	Enable or disable a browsing master.	ENABLE

SNMP Setup

Item	Explanation	Initial value (factory default)
Authentic Community	Specify the Authentic Community.	"public"
Trap Community	Specify the Trap Community.	"public"
Trap Address (IP)	Specify the Trap IP address.	0.0.0.0
SysContact	Specify a system Contact.	Blank
SysName	Specify a system Name.	Blank
SysLocation	Specify a system Location.	Blank
Enable Authentic Trap	Enable or disable Authentic trap.	2

Scanner Port Setup

Item	Explanation	Initial value (factory default)
Automatic disconnection time	Specify idle time of the USB device that is connected via SX Virtual Link until automatic disconnection. Setting value is between 0 and 60. Automatic disconnection is not executed if setting is 0.	10