

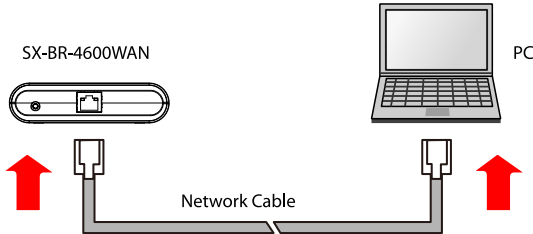
Firmware Update Procedure

This document describes how to upgrade the firmware of SX-BR-4600WAN.

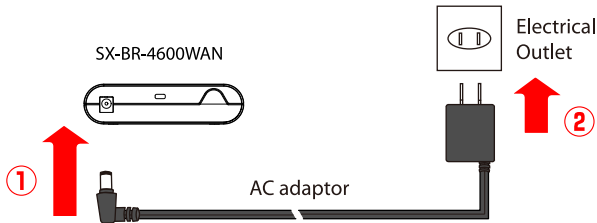
The firmware can be updated using the Web browser interface of SX-BR-4600WAN.

* In this document, Windows 7 is used as an example. However, the procedure will be the same if you are using an OS other than Windows 7.

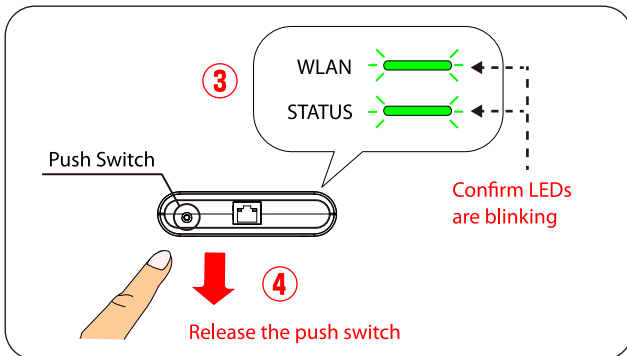
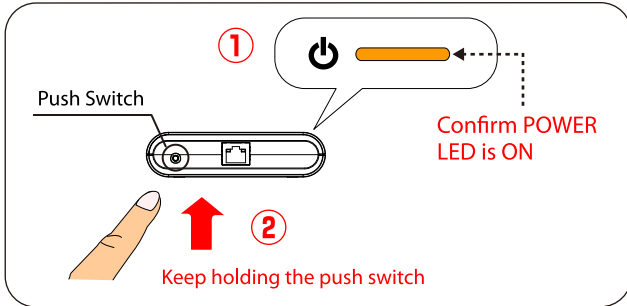
- 1** Connect SX-BR-4600WAN to the PC using the network cable that came with SX-BR-4600WAN.



- 2** Connect the AC adaptor to SX-BR-4600WAN, and the AC adaptor's plug to an electrical outlet.

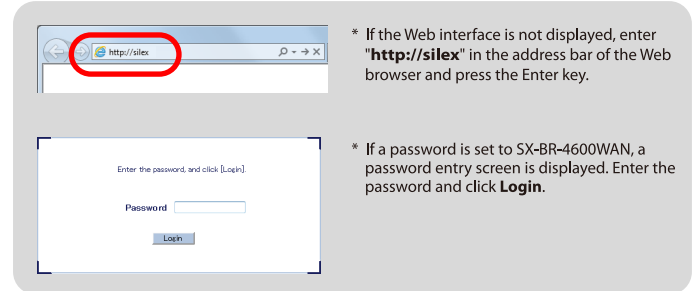
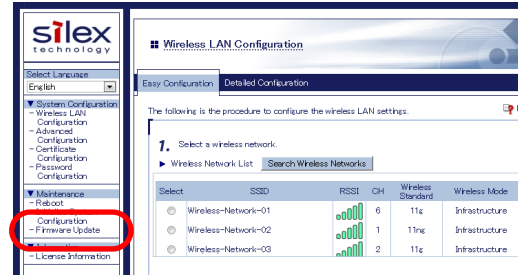


- 3** When the POWER LED (at the top) turns ON, press and hold the push switch (at the front). Release the push switch when WLAN LED and STATUS LED start to blink together (It may take 20sec until blinking). SX-BR-4600WAN will start running in the **Configuration Mode** then. Now you can configure SX-BR-4600WAN from the PC that has been connected to SX-BR-4600WAN via a network cable.



* If wireless LAN is enabled on your PC, please disable it.

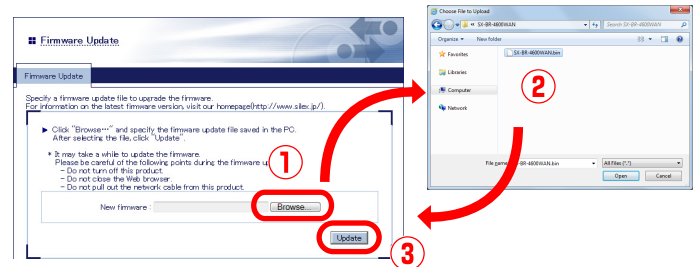
- 4** Start your Web browser (e.g. Internet Explorer, Safari, etc.) from the PC and then the Web interface of SX-BR-4600WAN will be displayed. Click **Firmware Update**.



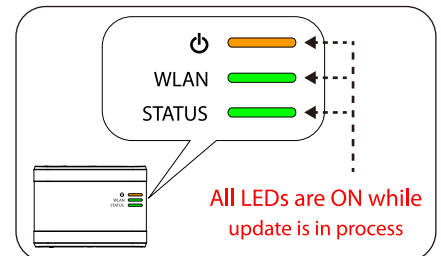
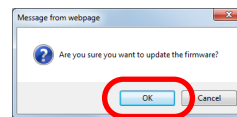
* If the Web interface is not displayed, enter "**http://silex**" in the address bar of the Web browser and press the Enter key.

* If a password is set to SX-BR-4600WAN, a password entry screen is displayed. Enter the password and click **Login**.

- 5** Firmware Update page is displayed. Click **Browse** to select the firmware update file (**SX-BR-4600WAN.bin**). Check that the file name is displayed at **New firmware** field and click **Update**.



- 6** Click **OK** to the confirmation message. The firmware update will begin. All LEDs on top of SX-BR-4600WAN turn ON while the firmware update is in process.



* Do not turn off SX-BR-4600WAN or close your Web browser while the firmware update is in process.

- 7** When the LED status changed from above, the firmware update is completed. Initialize the settings and re-configure it to use SX-BR-4600WAN again.

* For details on how to initialize SX-BR-4600WAN, please see **Initialize System Configuration** in the Setup Guide.