

Wireless Bridge SX-2500CG Firmware Update Procedure

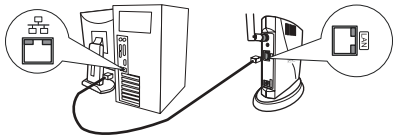
This document describes how to update the firmware of the Wireless Bridge, SX-2500CG.

Step1 Start in "Configuration Mode"

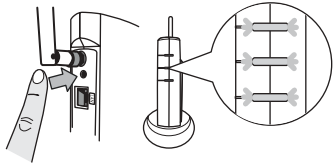
Firmware Update using Wired LAN (Recommended)

1. Disconnect SX-2500CG from a network device by unplugging a network cable.
2. Connect SX-2500CG and your PC using a crossover cable.

* A crossover cable is bundled with SX-2500CG.
This cable is different from the LAN cable that you usually use to connect your PC to network.



3. Connect the AC adapter to SX-2500CG, and the AC adapter's plug to an electrical outlet.
4. If any of the 3 LEDs on SX-2500CG start to blink, push and hold the push switch on the back side of SX-2500CG for more than 3 seconds. Release the push switch when the 3 LEDs start to blink.



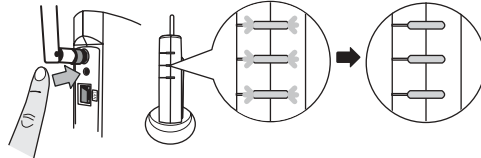
5. Verify that the Wireless LED turns off and the Status LED and Link LED flash slowly.

* If a wireless LAN is enabled on your PC, please disable it.

Firmware Update using Wireless LAN

* When you wish to update the firmware of several SX-2500CG using wireless LAN, please finish one by one.

1. Connect the AC adapter to SX-2500CG, and the AC adapter's plug to an electrical outlet.
2. If any of the 3 LEDs on SX-2500CG start to blink, push and hold the push switch on the back side of SX-2500CG for more than 8 seconds. Release the push switch when the 3 LEDs start to blink and then turn on.



3. Verify that the Wireless LED turns on and the Status LED and Link LED flash slowly.
4. Change the wireless settings of your PC to the following and then connect SX-2500CG to the PC.

Wireless mode	Ad hoc mode
SSID	SETUP
Channel	11
WEP key	none

* For Windows XP (SP2 or later) ...
Click **Start - Connect To - Wireless Network Connection**.
Click **View Wireless Networks**.
Select **SETUP** and click **Connect**.
(If a wireless LAN utility specially designed for your PC is already installed, or if you are using an OS other than Windows XP (SP2 or later), please configure the wireless LAN settings using the appropriate utility for your environment.)

* If a wired LAN is enabled on your PC, please disable it.

Step2 Update Firmware

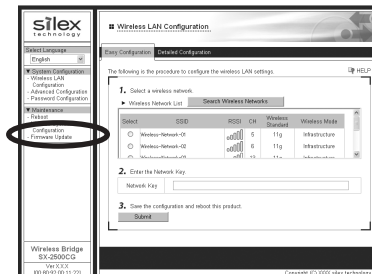
1. Open a Web browser (Internet Explorer, Safari, Netscape, etc.) on your PC.
2. A password entry screen will be displayed.
Enter **root** for user name, and for password enter the password configured for SX-2500CG. Click **OK** when completed.
(As factory default, no password is set for SX-2500CG. In this case, please leave the password blank, enter **root** for the user name, and click **OK**.)



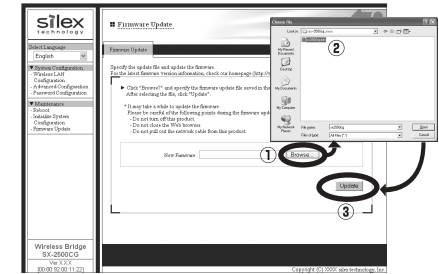
* If the password entry screen is not displayed, enter "**silex**" into the address bar of the Web browser and press the Enter key.



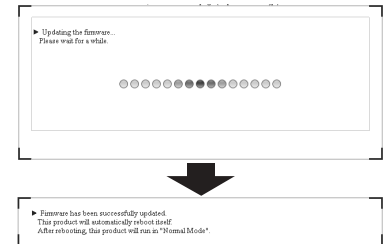
3. The configuration page is displayed.
Click **Firmware Update**.



4. In the Firmware Update page, click **Browse...** and select the file to be written to SX-2500CG.
Check that the file name is displayed in **New Firmware** field and click **Update**.



5. Firmware update will begin. Please wait until the update is complete.
When the update is complete, a completion message is displayed as below and SX-2500CG restarts in Normal Mode.



* Do not turn off SX-2500CG or close your Web browser while the firmware update is in process.

6. Firmware update is now complete.

* When you have updated the firmware using a wired LAN, disconnect SX-2500CG from your PC and connect it to a network device again.

* When you have updated the firmware using a wireless LAN, reset the wireless settings on your PC to the original.

NOTE:

After the firmware update is complete, please turn off SX-2500CG, reset it to the factory default setting and configure it again.