

Firmware Update Procedure

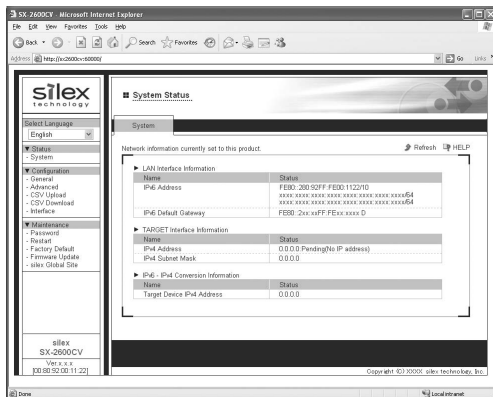
This document describes how to update the firmware of IPv6-IPv4 Converter SX-2600CV (this product).

The firmware can be updated using the Web Browser Interface of this product.

* To access the Web page, you need to enable IPv6 on your PC. For how to enable IPv6 on your PC, refer to the **Installation Guidance**.

1. Access the Web page of this product via your Web browser.

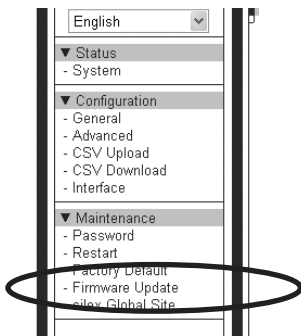
Example: <http://sx2600cv:60000/>



[Note]

After updating the firmware, you need to reset this product to the factory default setting and reconfigure this product. Before executing the update, check each setting on the Web page and take notes of them.

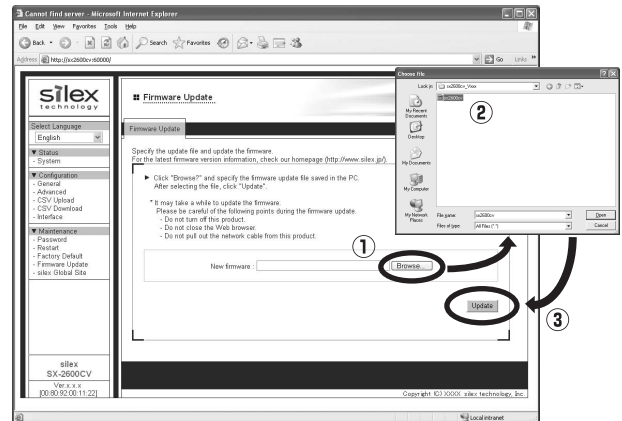
2. Click **Firmware Update** in the left pane.



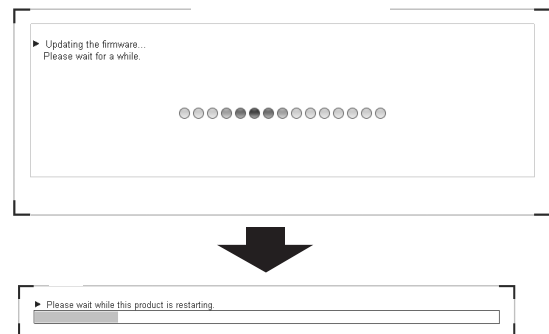
3. User authentication screen will be displayed. Enter "root" for User name and password that you have configured for this product to Password, and click **OK**. (In the factory default setting, no password is set to this product.)



4. When the user authentication is successfully completed, the Firmware Update page will be displayed. Click **Browse...** and select the file to be written to this product (sx2600cv.bin). Check that the file name is displayed in New firmware field and click **Update**.

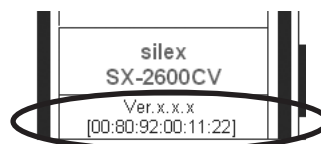


5. Firmware update will begin. Please wait until the update is complete. When the update is complete, this product will automatically reboot itself and display the screen of step 4.



* Do not turn off this product or close your Web browser while the firmware update is in process.

6. Firmware update is now complete. Refresh your Web browser and check that the version information is updated.



[Note]

After the firmware update is complete, please turn off this product, reset it to the factory default setting and configure it again.