

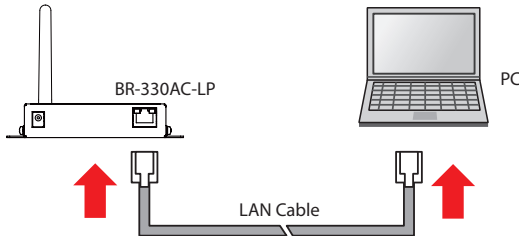
Firmware Update Procedure

This document describes how to upgrade the firmware of BR-330AC-LP.

The firmware can be updated using the Web browser interface of BR-330AC-LP.

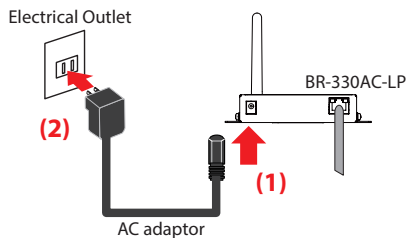
* The screen display may vary depending on the operating system, Web browser and its version of the PC.

- 1** Connect BR-330AC-LP to the PC using the LAN cable.

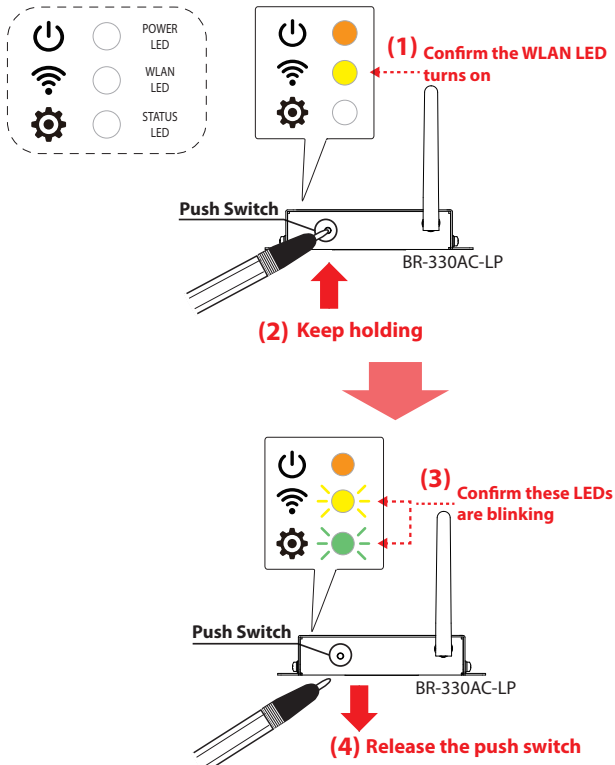


* If wireless LAN is enabled on your PC, please disable it.

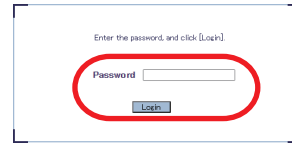
- 2** Connect the AC adaptor to BR-330AC-LP, and the AC adapter's plug to an electrical outlet.



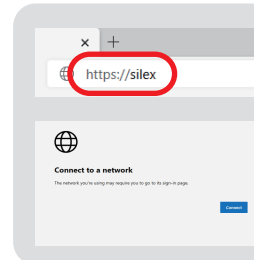
- 3** When the POWER LED (at the front) turns on and the WLAN LED turns on, press and hold the push switch (at the top) with a fine tipped object such as a pen or pencil. In 5 seconds, the WLAN LED and STATUS LED will start to blink together. Release the push switch then. BR-330AC-LP will start running in the **Configuration Mode**. Now you can upgrade the firmware of BR-330AC-LP from the PC that has been connected to BR-330AC-LP via a LAN cable.



- 4** Start a Web browser (Microsoft Edge, Mozilla Firefox) on the PC. When the login page is displayed, enter the password for BR-330AC-LP and click **Login**.



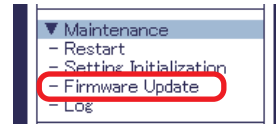
* When the password configuration page is displayed, configure the password and then login.



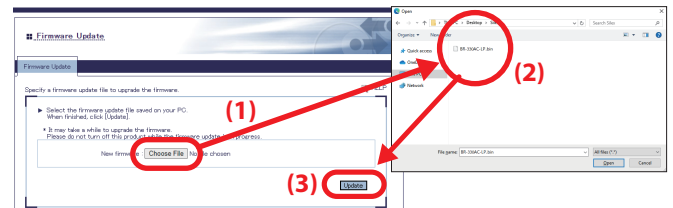
* If the Web interface is not displayed, enter "https://silex" (enter "http://silex" when HTTP is enabled) in the address bar of the Web browser and press the Enter key.

* If the **Connect to a network** screen appears, click **Connect**. If a warning screen appears then, click **Advanced** and click **Continue to xxxxxx(unsafe)**.

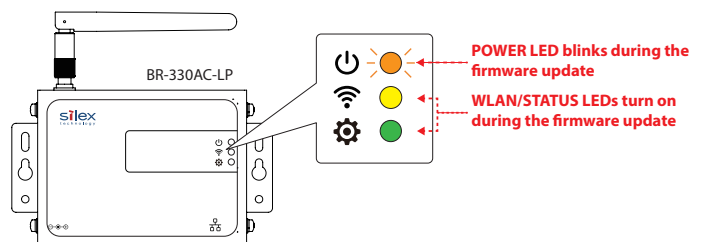
- 5** The Web page of BR-330AC-LP is displayed. Click **Firmware Update** from the left menu.



- 6** Firmware Update page is displayed. Click the button to the right of **New firmware**, and select the firmware update file (**BR-330AC-LP.bin**). Check that the file name is displayed at **New firmware**, and click **Update**.



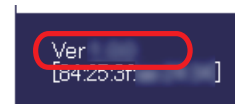
- 7** Click **OK** to the confirmation dialog. The firmware update will begin. When the firmware update is in progress, the POWER LED blinks while the WLAN LED and STATUS LED turn on.



* Do not turn off BR-330AC-LP or close your Web browser while the firmware update is in process.

- 8** When the LED light pattern is changed, the firmware update is complete. Access the Web page of BR-330AC-LP again. If the **Connect to a network** screen appears, click **Connect**. If a warning screen appears, click **Advanced** and then click **Continue to xxxxxx (unsafe)**.

- 9** Check the version information at the bottom left of the login page.



※ Windows and Microsoft Edge are trademarks or registered trademarks of Microsoft Corporation in the United States and/or other countries.
 ※ Mozilla and Firefox are trademarks or registered trademarks of Mozilla Foundation in the United States and/or other countries.

If you have any issues, please contact our Customer Support Center.

USA

Email: support@silexamerica.com

Europe

Email: support@silexeurope.com