

Firmware Update Procedure

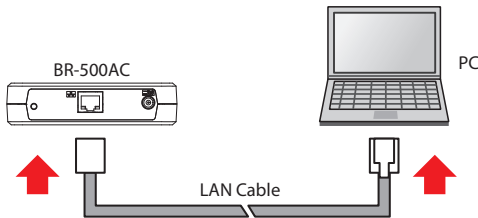
This document describes how to upgrade the firmware of BR-500AC.

The firmware can be updated using the Web browser interface of BR-500AC.

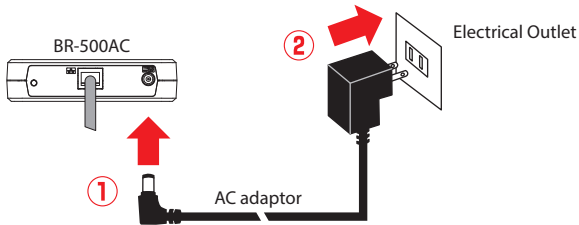
* The screen display may vary depending on the BR-500AC firmware version, or the operating system, Web browser and its version of the PC. Some instructions may not be applicable.

* To update the firmware, a password needs to be set to BR-500AC beforehand.

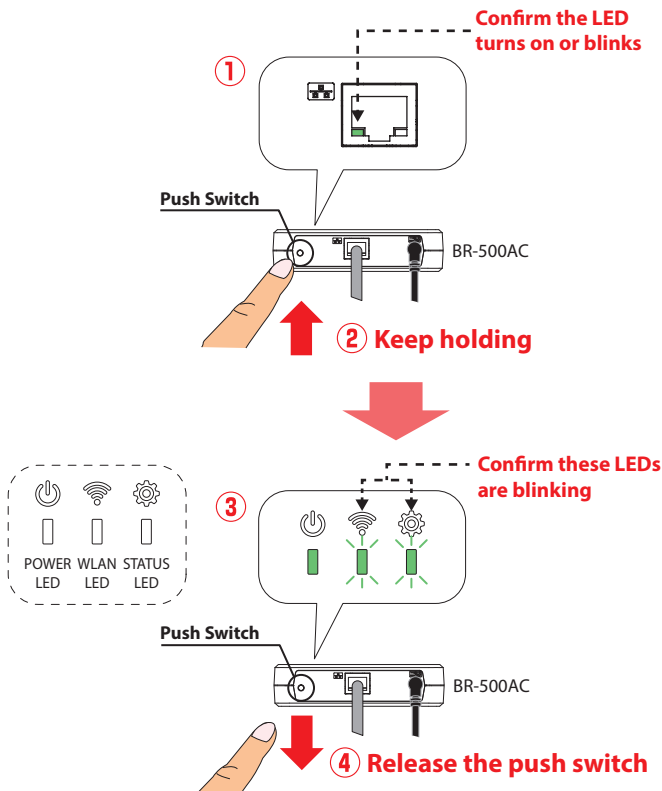
1 Connect BR-500AC to the PC using the LAN cable that came with BR-500AC.



2 Connect the AC adaptor to BR-500AC, and the AC adaptor's plug to an electrical outlet.

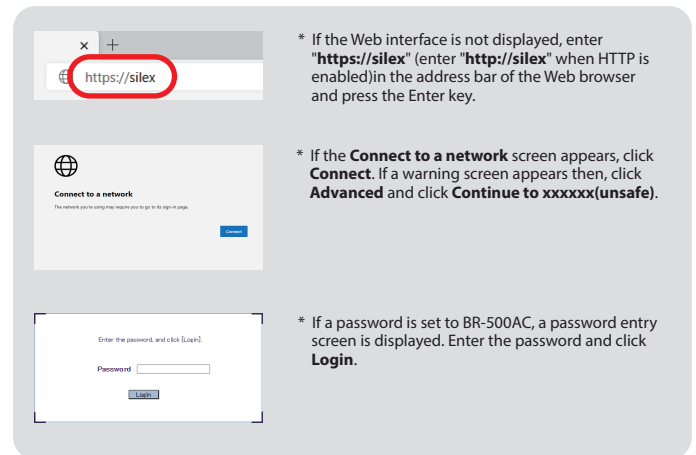
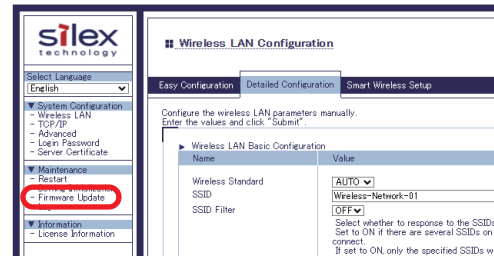


3 When the POWER LED turns green and the Link LED turns on or blinks, press and hold the push switch on the front of BR-500AC. In 5 seconds, the WLAN LED and STATUS LED will start to blink green together. Release the push switch then. BR-500AC will start running in the **Configuration Mode**. Now you can upgrade the firmware of BR-500AC from the PC that has been connected to BR-500AC via a LAN cable.



* If wireless LAN is enabled on your PC, please disable it.

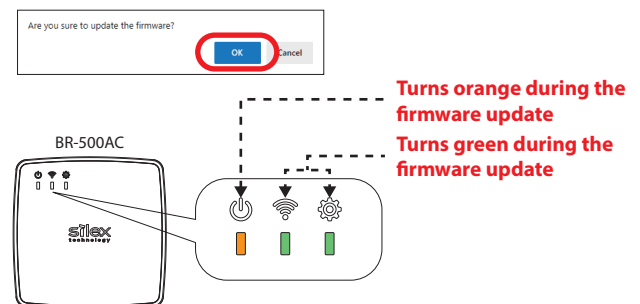
4 Start your Web browser (Microsoft Edge, Safari) from the PC and then the Web interface of BR-500AC will be displayed. Click **Firmware Update**.



5 Firmware Update page is displayed. Click the button to the right of **New firmware**, and select the firmware update file (**BR-500AC.bin**). Check that the file name is displayed at **New firmware**, and click **Update**.



6 Click **OK** to the confirmation dialog. The firmware update will begin. The POWER LED turns orange, and the WLAN LED and STATUS LED turn green while the firmware update is in process.



* Do not turn off BR-500AC or close your Web browser while the firmware update is in process.

7 When the LED light pattern is changed, the firmware update is complete. Turn off BR-500AC by unplugging AC adaptor from the electrical outlet. The firmware update has been completed now.

If you have any issues, please contact our Customer Support Center.

USA

Email: support@silexamerica.com

Europe

Email: support@silexeurope.com