

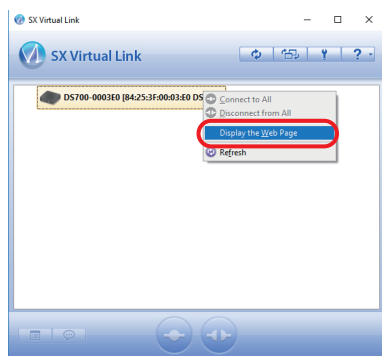
# DS-700/DS-700AC Firmware Update Procedure

This document describes how to update the firmware of DS-700/DS-700AC.

The firmware can be upgraded using the Web browser interface of DS-700/DS-700AC which can be accessed using the SX Virtual Link utility. Before you start, please make sure that both your PC and DS-700/DS-700AC are connected to a wired network.

- \* This document uses the screenshots captured from Windows 10. However, the procedure will be the same if you are using an OS other than Windows 10.
- \* The screen display may vary depending on the DS-700AC firmware version, or the operating system, Web browser and its version of the PC. Some instructions may not be applicable.
- \* Configure the following settings beforehand.
  - Select **ENABLE** for **HTTPS** at the **Service Management** page.

1. Start the SX Virtual Link utility. Right-click the device server on SX Virtual Link's main window and select **Display the Web page** from the menu displayed.

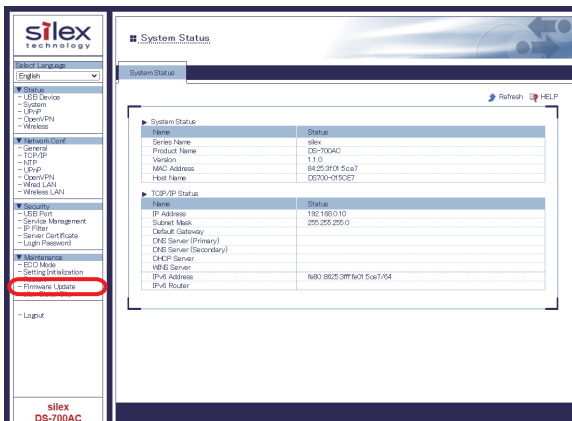


2. The login page is displayed. Enter the password for DS-700/DS-700AC and click **Login**.



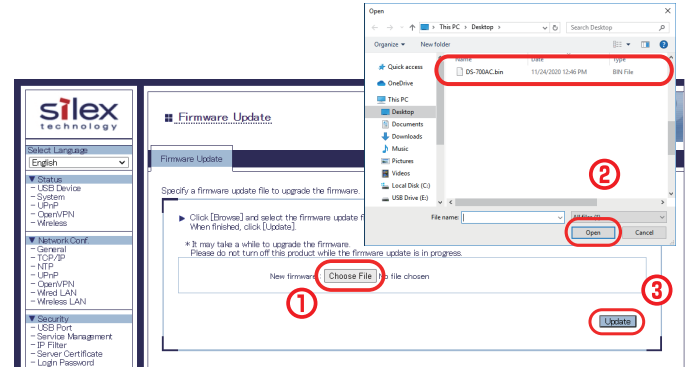
- \* When the login password configuration page appears, enter the password to configure for DS-700/DS-700AC. After the login password is configured, enter it at the login page.

3. After the login, the configuration page is displayed. Click **Firmware Update** under **Maintenance**.

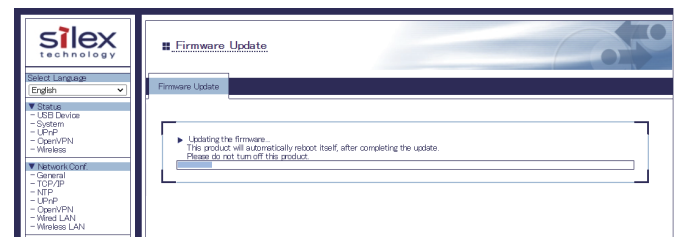
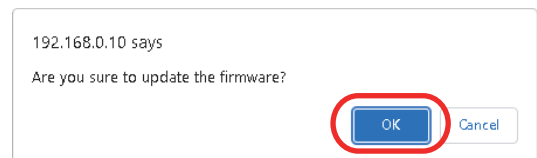


4. The **Firmware Update** page appears. Click the button to the right of **New firmware**, and select the firmware file (\*) that has been downloaded to the PC, and click **Update**.

(\*) For DS-700, the name of firmware file will be "DS-700.bin".  
For DS-700AC, the name of firmware file will be "DS-700AC.bin".

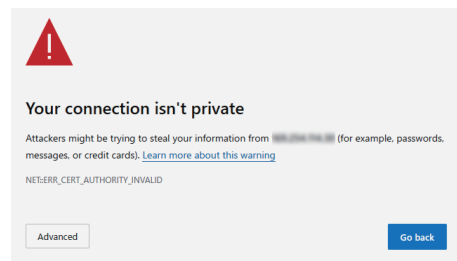


5. The update confirmation message is displayed. Click **OK** to begin the firmware upgrade.



- \* Do not turn off DS-700/DS-700AC or close your Web browser while the firmware upgrade is in process.

6. If a warning screen appears, click **Advanced** and then click **Continue to xxxxxx (unsafe)**.



7. When the login page is displayed, the firmware update is completed. See the bottom left of the page and check the version information is changed.