

Firmware Update Procedure

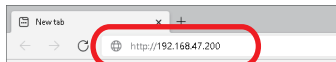
This document describes how to update the firmware of MNS-300EM.

The firmware can be upgraded using the Web Browser Interface of MNS-300EM.

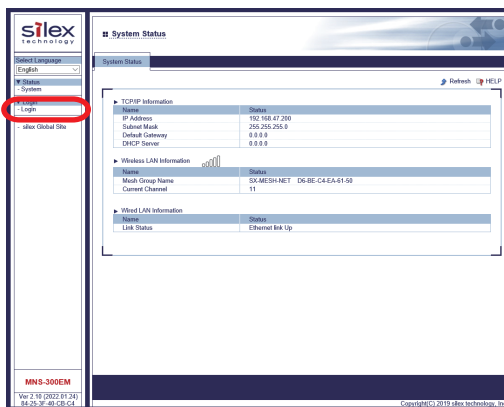
* Display may vary depending on the Web browser.

1. Enter the IP address that is configured on MNS-300EM in the address bar of the Web browser.
Press the ENTER key.

Example) Enter 192.168.47.200 and press the ENTER key.

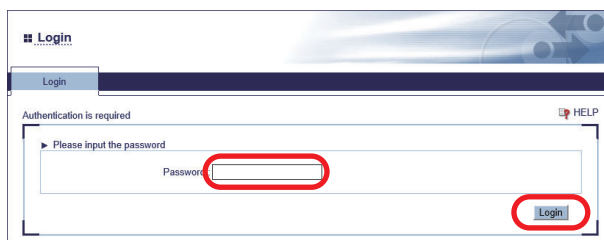


2. The Web browser will run and the Web page will be displayed.
In the left pane of the Web page, click **Login**.

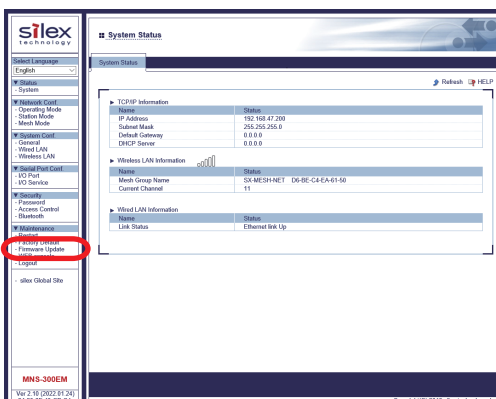


* When the password configuration page is displayed, configure the password.

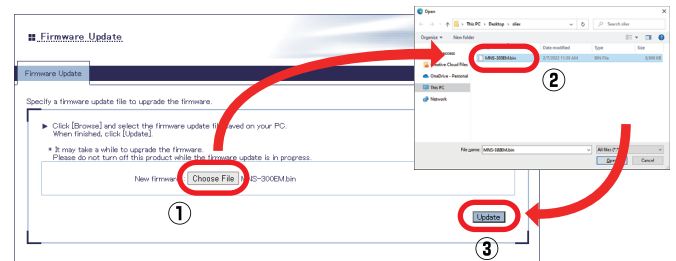
3. In the login page, enter the **password** and click **Login**.



4. In the left pane of the Web page, click **Firmware Update**.



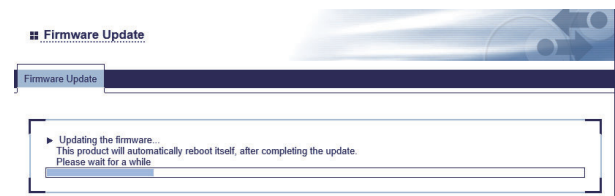
5. The **Firmware Update** page appears. Click the button to the right of **New firmware**, and select the firmware file (**MNS-300EM.bin**) that has been downloaded to the PC, and click **Update**.



6. A confirmation message is displayed. Click **OK**.



7. The firmware update will begin.



* Do not turn off MNS-300EM or close your Web browser while the firmware update is in process.

8. When the system status page is displayed, the firmware update is completed.
See the bottom left of the page and check that the version information is changed.

