

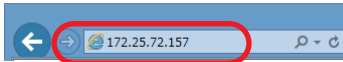
Firmware Update Procedure

This document describes how to update the firmware of SD-300/SD-310AN/SD-320AN.

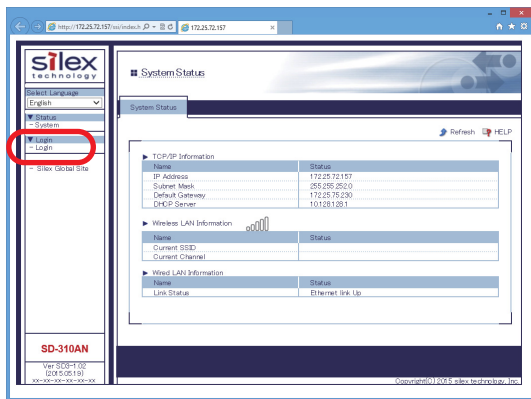
The firmware can be upgraded using the Web Browser Interface of SD-300/SD-310AN/SD-320AN.

1. Enter the IP address that is configured on SD-300/SD-310AN/SD-320AN in the address bar of the Web browser. Press the ENTER key.

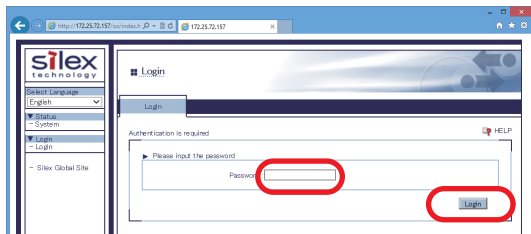
Example) Enter 172.25.72.157 and press the ENTER key.



2. The Web browser will run and the Web page will be displayed. In the left pane of the Web page, click **Login**.

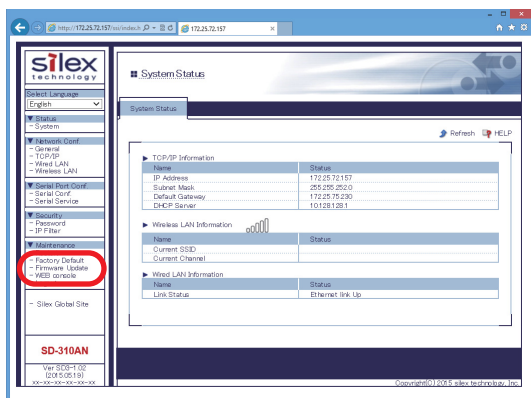


3. In the login page, enter the **password** and click **Login**.

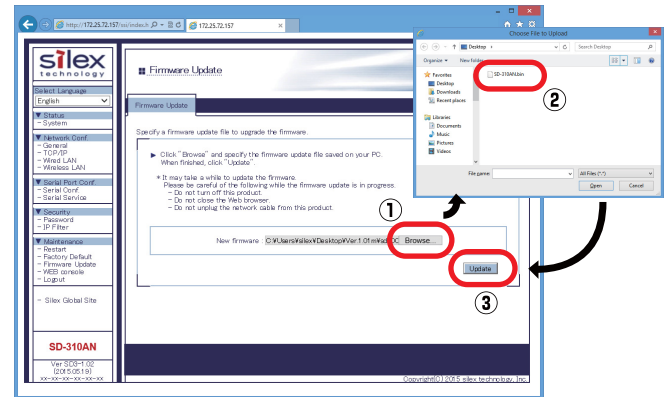


* By defaults, the login password is set to access.

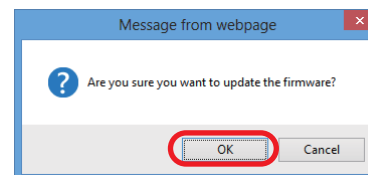
4. In the left pane of the Web page, click **Firmware Update**.



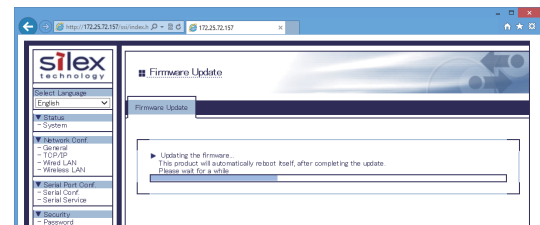
5. In the Firmware Update page, click **Browse...** and select the firmware file to be loaded to SD-300/SD-310AN/SD-320AN (SD-3xx.bin file). Check that the file name is displayed in New firmware field and click **Update**.



6. A confirmation message is displayed. Click **OK**.



7. The firmware update will begin.



* Do not turn off SD-300/SD-310AN/SD-320AN or close your Web browser while the firmware update is in process.

8. When the system status page is displayed, the firmware update is completed. See the bottom left of the page and check that the version information is changed.

