

# Firmware Update Procedure

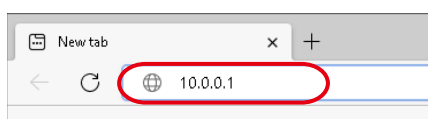
This document describes how to update the firmware of SX-AP-4800AN2.

The firmware can be updated using the Web browser interface of SX-AP-4800AN2. Before you start, please make sure that both your PC and SX-AP-4800AN2 are connected in a wired network.

\* This document uses the screenshots captured from Windows 10. However, the procedure will be the same if you are using an OS other than Windows 10.

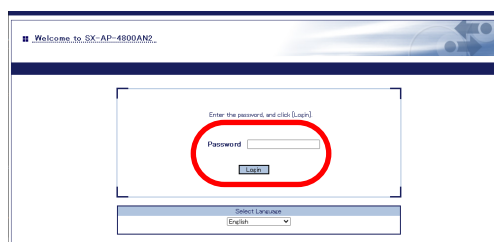
\* Display may vary depending on the Web browser.

- 1 Start a Web browser on the PC and enter the IP address of SX-AP-4800AN2 in the address bar. Press the Enter key.



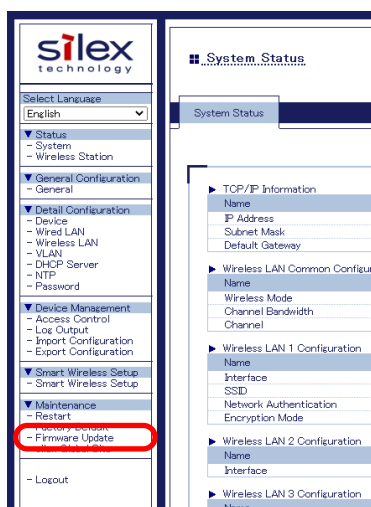
\* Above IP address is a sample address.  
Enter the IP address configured to SX-AP-4800AN2.

- 2 The login page of SX-AP-4800AN2 is displayed. Enter the password of SX-AP-4800AN2 and click **Login**.

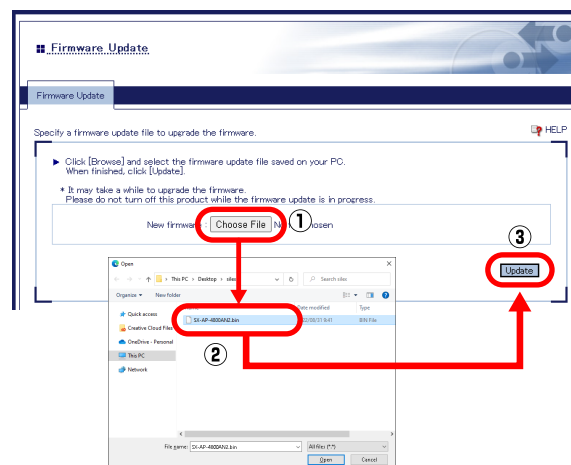


\* When the password configuration page is displayed, configure the password and then login.

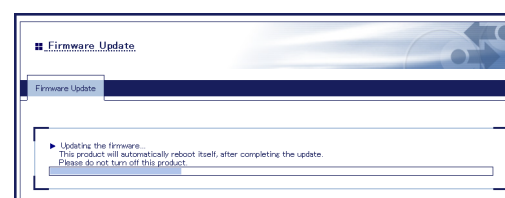
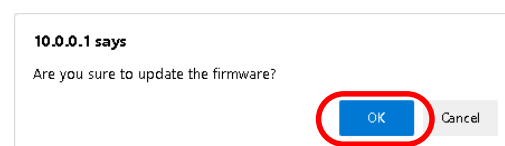
- 3 When the Web page of SX-AP-4800AN2 is displayed, click **Firmware Update** under **Maintenance**.



- 4 The **Firmware Update** page appears. Click the button to the right of **New firmware**, and select the latest firmware (SX-AP-4800AN2.bin) that has been downloaded to the PC, and click **Update**.



- 5 The update confirmation message is displayed. Click **OK** to begin the firmware update. Please wait until the update is complete.



\* Do not turn off SX-AP-4800AN2 or close your Web browser while the firmware update is in process.

- 6 When the login menu is displayed, the firmware update is complete. In the bottom left of the Web page, check that the version information is changed.