

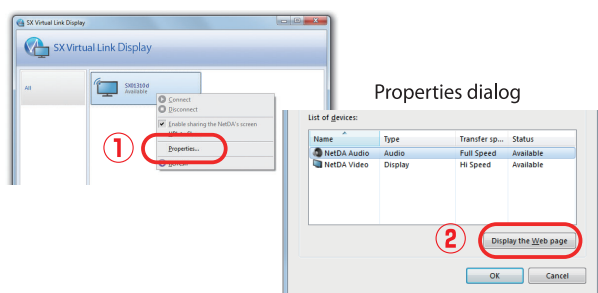
Firmware Update Procedure

This document describes how to update the firmware of SX-ND-4350WAN / SX-ND-4350WAN Plus.

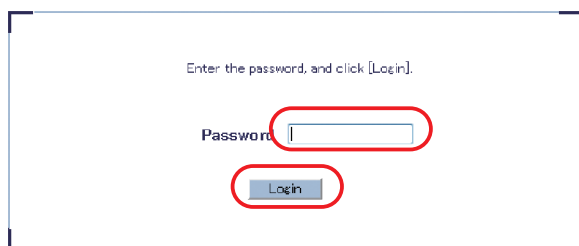
The firmware can be upgraded using the Web browser interface of SX-ND-4350WAN which can be accessed using the SX Virtual Link Display utility. Before you start, please make sure that both your PC and SX-ND-4350WAN / SX-ND-4350WAN Plus are connected to a wired network.

* This document uses the screenshots captured from Windows 7. However, the procedure will be the same if you are using an OS other than Windows 7.

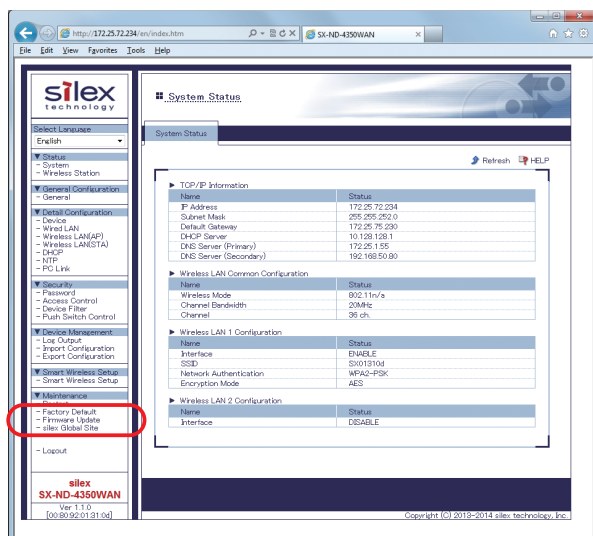
1. Start the SX Virtual Link Display utility.
In the main window, right-click on the SX-ND-4350WAN that you wish to upgrade the firmware for and select **Properties** from the displayed menu. When the properties dialog is displayed, click **Display the Web page**.



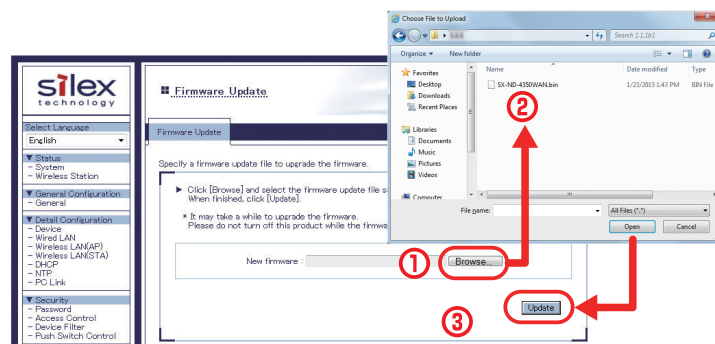
2. The login page is displayed.
Enter the password for SX-ND-4350WAN and click **Login**.
(By default, no password is configured to SX-ND-4350WAN.)



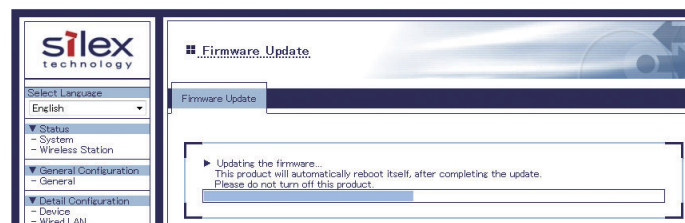
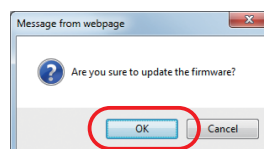
3. After the login, the configuration page is displayed.
Click **Firmware Update** under **Maintenance**.



4. In the **Firmware Update** page, click **Browse...** and select the file to be loaded to SX-ND-4350WAN (SX-ND-4350WAN.bin file). Check that the file name is displayed in **New firmware** field and click **Update**.



5. The update confirmation message is displayed.
Click **OK** to begin the firmware upgrade.



* Do not turn off SX-ND-4350WAN or close your Web browser while the firmware upgrade is in process.

6. When the login page is displayed, the firmware update is completed.
See the bottom left of the page and check the version information is changed.