

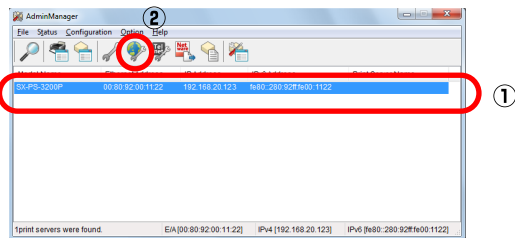
Firmware Update Procedure

This document describes how to update the firmware of SX-PS-3200P.

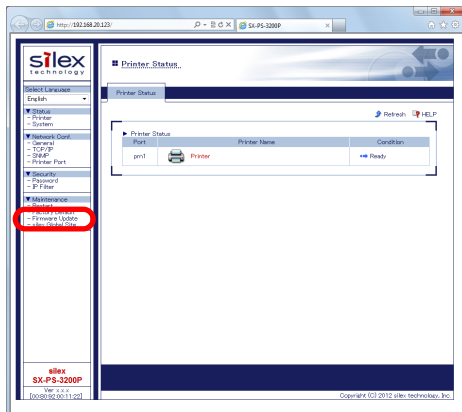
The firmware can be updated using the Web Browser Interface of the device server. Before you start, please make sure that both your PC and the device server are connected to a wired network.

* In this document, Windows 7 is used as an example. However, the procedure will be the same if you are using any other operating system.

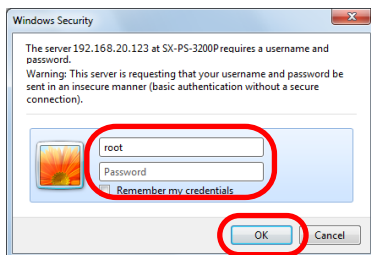
1. Start AdminManager. In the main window, select SX-PS-3200P and click the icon "Configuration via Web browser" ().



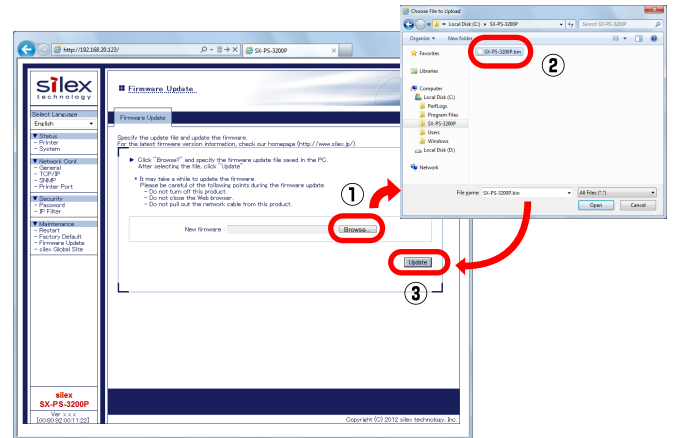
2. The Web page of SX-PS-3200P will appear. Click **Firmware Update** under **Maintenance**.



3. User authentication screen will be displayed. Enter "root" for User name and password that you have configured for the device server to Password, and click **OK**. (In the factory default setting, no password is set to the device server.)



4. When the user authentication is successfully completed, the **Firmware Update** page will be displayed. Click **Browse...** and select the firmware file you wish to load to SX-PS-3200P (SX-PS-3200P.bin). Check that the file name is displayed in New firmware field and click **Update**.



5. The firmware update will begin. Please wait until the update is complete. When the update is complete, SX-PS-3200P will automatically be restarted and the window as shown in step 4 will be displayed.



* Do not turn off SX-PS-3200P or close your Web browser while the firmware update is in process.

6. Firmware update is now complete. See the bottom left of the Web page to confirm that the version information is updated properly.

