

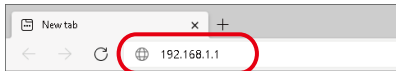
# Firmware Update Procedure

This document describes how to update the firmware of FBR-100AN / FBR-100.

The firmware can be updated using the Web browser interface of FBR-100AN / FBR-100.

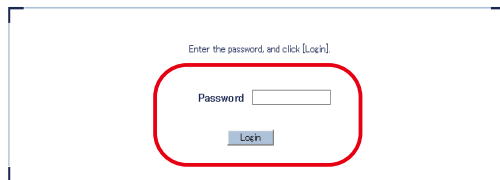
\* In this document, Windows 10 is used as an example. However, the procedure will be the same if you are using an OS other than Windows 10.

1. Start the Web browser on the PC.  
Enter the IP address of FBR-100AN / FBR-100 to the address bar.



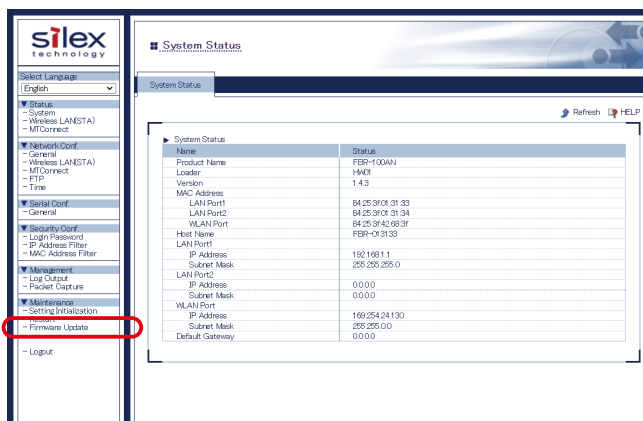
\* Above IP address is a sample address.  
Enter the IP address configured to FBR-100AN / FBR-100.  
\* Display may vary depending on the Web browser.

2. When the login page is displayed, enter the password of FBR-100AN / FBR-100 for **Password** and click **Login**.



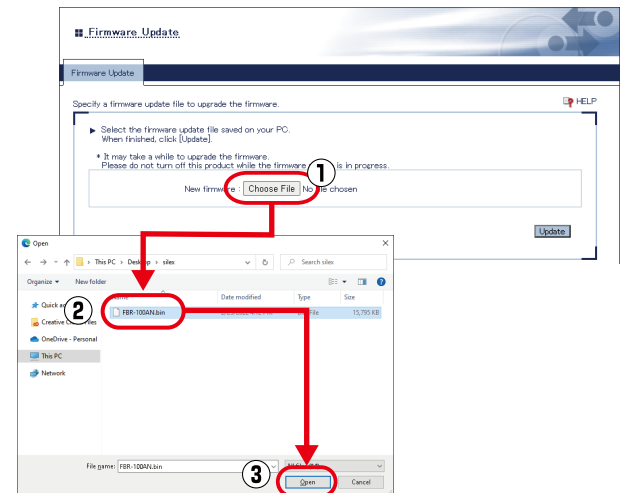
\* When the login password configuration page is displayed, configure the login password and then login.

3. The Web page is displayed.  
Click **Firmware Update** from the configuration menu.

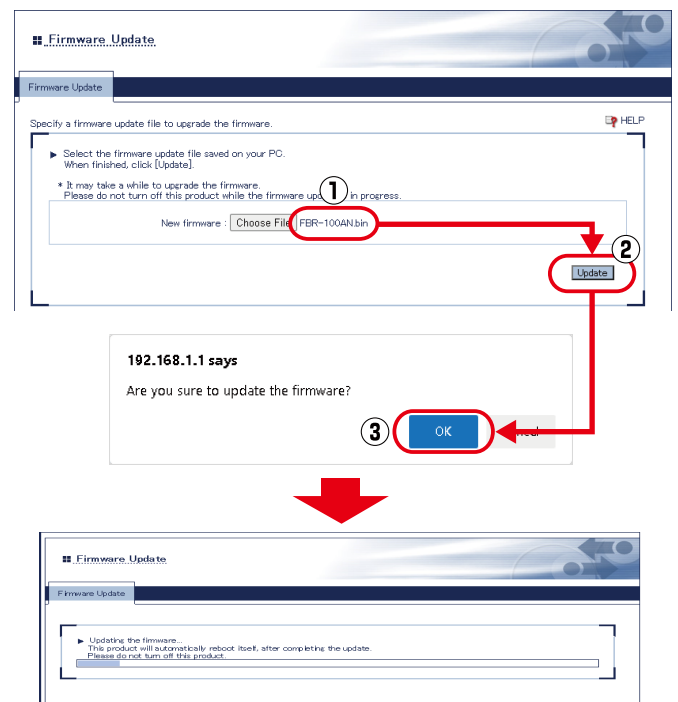


4. The **Firmware Update** page is displayed.  
Click the button to the right of **New firmware**, and select the firmware file (as shown below) that has been downloaded to the PC.

Product Name	Firmware File Name
FBR-100AN	FBR-100AN.bin
FBR-100	FBR-100.bin



5. Check that the file name is displayed at **New firmware** field and click **Update**.  
Click **OK** on a confirmation message to start the firmware update.  
Please wait until the update is completed.



\* Do not turn off FBR-100AN / FBR-100 or close your Web browser while the firmware update is in process.

6. When the update is finished, FBR-100AN / FBR-100 will automatically be restarted.  
When the restart is finished and the login page is displayed again, firmware update is completed. Check that the new firmware version is displayed at the bottom left of Web page.

If you have any issues, please contact our Customer Support Center.

US

Email: support@silexamerica.com

Europe

Email: support@silexeurope.com