

Wireless Bridge BR-300AN Setup Guide

Thank you for purchasing the Wireless Bridge BR-300AN. BR-300AN is the wireless bridge which can add a wireless feature to non-wireless devices (10/100/1000BASE-T network devices). With 2.4GHz / 5GHz band support, non-wireless devices can easily be connected to a wireless network. Enterprise security feature will ensure safe and secure use of wireless communication at an office, factory, etc. where a higher security is required.

This Setup Guide explains how to setup and use BR-300AN in a wireless network.



WA102660XF

(De) Die deutsche Version der Konfigurationsanleitung können Sie von unserer Website herunterladen.

(Fr) Il est possible de télécharger la version française de ce guide d'installation depuis notre page d'accueil.

(It) La versione italiana della guida all'installazione è scaricabile dalla nostra homepage.

(Es) Puede descargar la versión en español de la guía de configuración desde nuestra página principal.

(Pt) A versão em português do guia de instalação pode ser baixada de nossa página inicial.

URL : <https://www.silextechnology.com/>

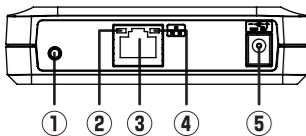
Package Contents

Following items are bundled with BR-300AN.

- Wireless Bridge BR-300AN
- AC adaptor
- Network cable
- Setup Guide (this document)
- Warranty booklet
- GPL license notice (Distribution of source code licensed under the open source software license)

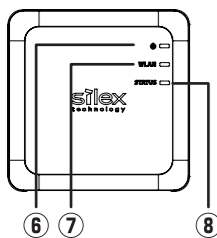
Parts and Functions

FRONT

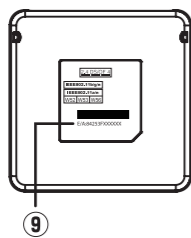


① Push switch	Starts BR-300AN in Configuration Mode: Press and hold the push switch for 5 sec while BR-300AN is active. Configures BR-300AN using Smart Wireless Setup: Press and hold the push switch for 10 sec while BR-300AN is active. Resets BR-300AN to factory default settings: Press and hold the push switch while turning on BR-300AN. Release the switch when the WLAN LED turns from Green to Red.
② Status LED (Orange)	BLINK (Orange) : Waiting for connection when Link LED is OFF. Transferring data when Link LED is ON.
③ LAN port	Connect the network cable.
④ Link LED (Green)	ON : Connected to a wired LAN
⑤ Power connector	Connect the AC adapter.

TOP



BOTTOM

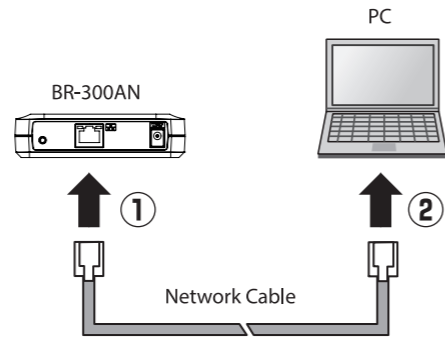


⑥ POWER LED (Green/Red)	ON (Green) : Powered on ON (Red) : Powered on and ready
⑦ WLAN LED (Green/Red)	ON (Green) : Running in Infrastructure mode. BLINK (Green) : Processing setup using the Smart Wireless Setup. * Blinks together with STATUS LED when running in Configuration Mode . * Turns from Green to Red during the initialization.
⑧ STATUS LED (Green)	ON (Green) : A network connection is established. BLINK (Green) : Transferring data. * Blinks together with WLAN LED when running in Configuration Mode .
⑨ MAC Address	MAC Address of BR-300AN

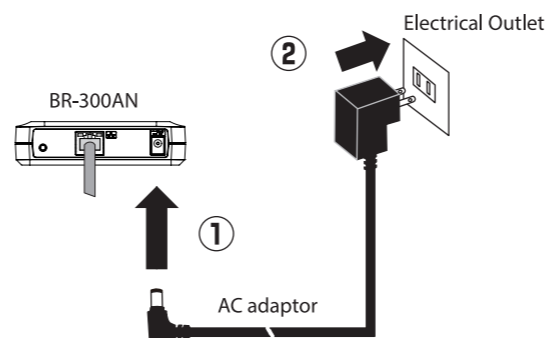
Configuration Method 1 - Setup Using Configuration Mode

Step1 Start BR-300AN in Configuration Mode

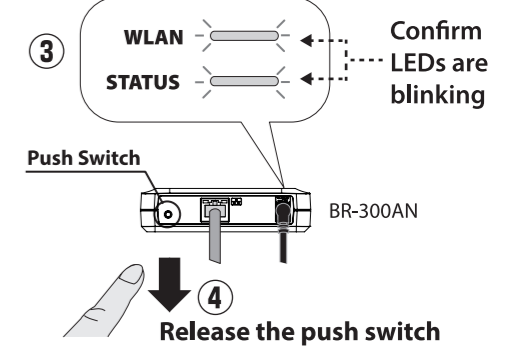
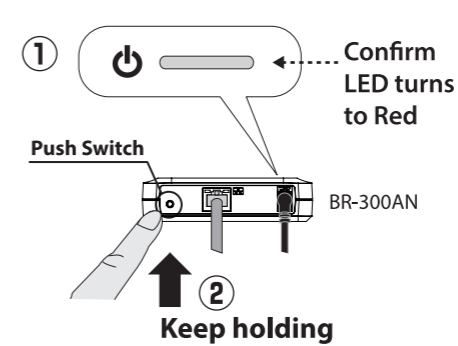
- 1 Connect BR-300AN to the PC using the network cable that came with BR-300AN.



- 2 Connect the AC adaptor to BR-300AN, and the AC adaptor's plug to an electrical outlet.



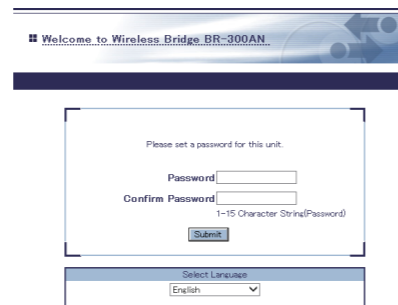
- 3 When the POWER LED on top of BR-300AN turns Red, press and hold the push switch. Release the push switch when WLAN LED and STATUS LED start to blink Green together (it may take 20sec until blinking). BR-300AN will start running in the Configuration Mode and be ready to configure from the PC that has been connected to BR-300AN via a network cable.



* If wireless LAN is enabled on your PC, please disable it.

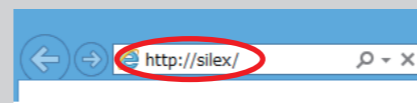
Step2 Setup

- 1 Start a Web browser (Internet Explorer, Safari, etc.) on the PC you are using for the setup. When the login password configuration page appears, enter the password to configure for BR-300AN and click **Submit**.

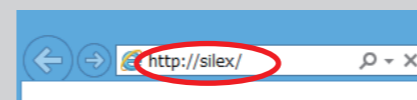


* The login password configuration page is displayed only when BR-300AN is configured for the first time.

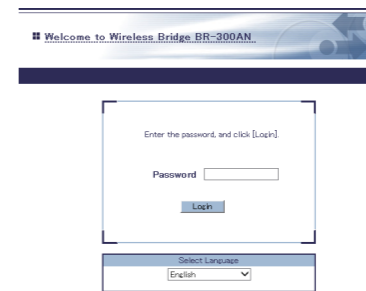
- * If the Web page is not displayed, enter "http://silex/" in the address bar of the Web browser and press the **Enter** key.



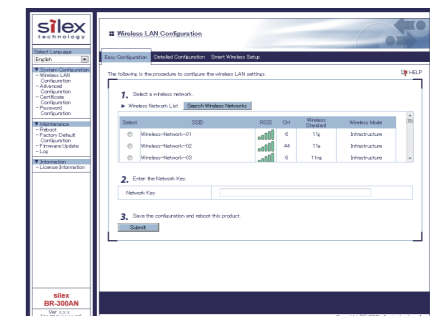
- * If the Web page is still not displayed after entering "http://silex/", you need to check the IP address of the PC connected to BR-300AN. If a static IP address is configured to the PC, enter the PC's address after adding 1 to its last digit and press **Enter** key.



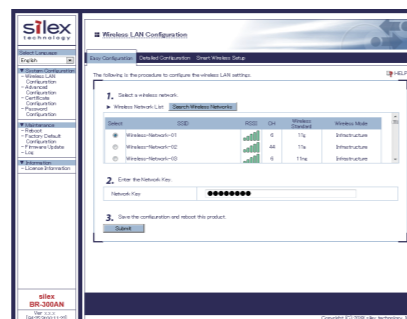
- 2 Enter the login password you have configured and click **Login**.



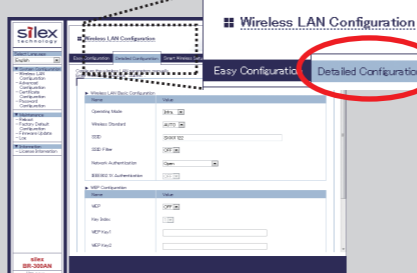
- 3 The Web page of BR-300AN is displayed.



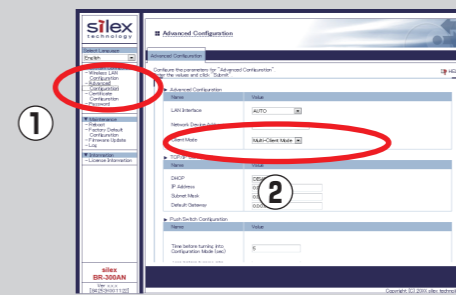
- 4 In the Web page, select the destination network from the **Wireless Network List** and enter the WEP Key or Shared Key for the **Network Key**. Click **Submit** when finished.



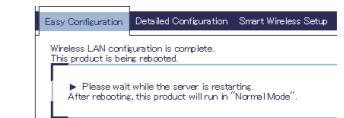
- * If the destination network is not displayed in the **Wireless Network List**, click **Detailed Configuration** at the top of the page. In the page displayed, enter the wireless settings of the network that you wish to connect BR-300AN to, and click the **Submit** button. Refer to the HELP for details on each setting.



- * To connect multiple network devices using an Ethernet HUB, click **Advanced Configuration** and select **Multi-Client Mode** for **Client Mode**.



- 5 Once a message appears indicating that the configuration has been completed, close the Web browser.

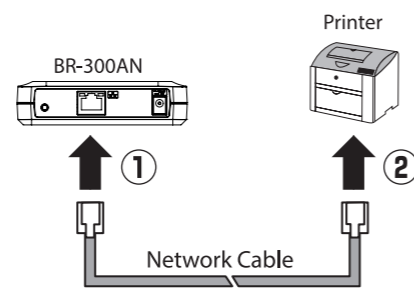


- 6 The configuration has now been completed. To give a wireless feature to the same PC (the one you have been using for configuration), please restart the PC. To give a wireless feature to the other device, turn off both BR-300AN and the PC, and remove BR-300AN from the PC. Refer to **Step3** to connect BR-300AN to the network device using a network cable.

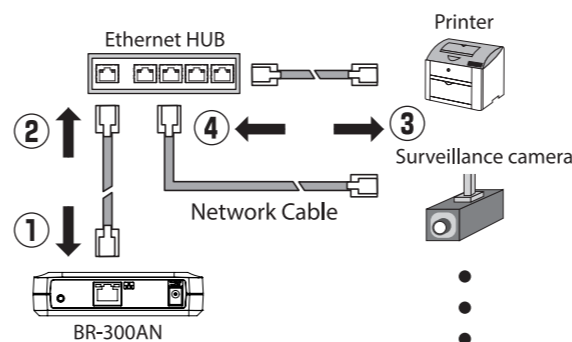
Step3 Connect BR-300AN to the network device you wish to use wirelessly

- 1 Turn off the network device that you wish to use wirelessly and connect it to BR-300AN using the network cable.

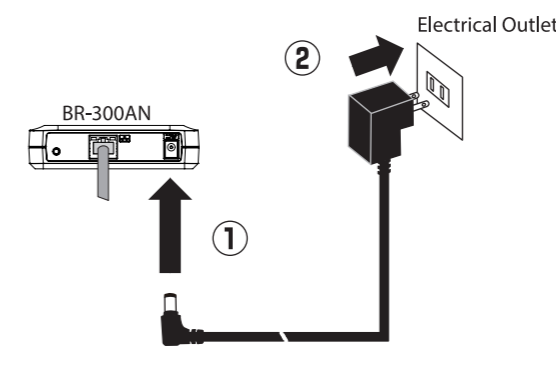
Sample connection in Single Client Mode



Sample connection in Multi-Client Mode



- 2 Connect the AC adaptor to BR-300AN and the AC adaptor's plug to the electrical outlet.



- 3 Turn on the network device connected to BR-300AN.

* Some network devices require additional network settings. In such cases, refer to the manual that came with the network device.
* When turning on BR-300AN and network devices, be sure to turn on BR-300AN first. Do not press the push switch then.

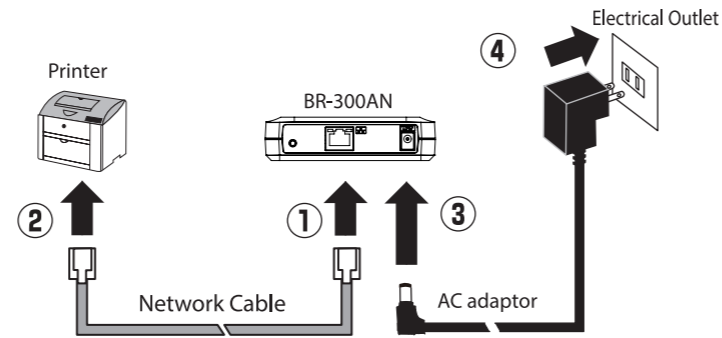
Configuration Method 2 - Easy Configuration Using Smart Wireless Setup

BR-300AN allows you to configure its wireless settings easily using a push switch if your wireless router supports WPS (Wi-Fi Protected Setup). How to configure wireless settings using the push switch is explained.

NOTE

- For wireless configuration using WPS, your wireless router must support WPS. Make sure that your wireless router supports WPS and is turned on in your environment.
- During this configuration, please temporarily move BR-300AN closer to your wireless router to make it easier for both devices to communicate.
- WPS may need to be enabled manually on your wireless router. For details, refer to the operation manual that came with your wireless router.
- If a security feature such as MAC Address filtering is enabled on your wireless router, disable it temporarily so that BR-300AN can communicate with your wireless router.
- If you plan to connect two or more network devices to BR-300AN using an Ethernet Hub, please go back to **Configuration Method 1 - Setup Using Configuration Mode**. The **Client Mode** can be configured only when BR-300AN is running in **Configuration Mode**.

1 Connect the network device and BR-300AN using the network cable that came with BR-300AN. Connect the AC adaptor to BR-300AN and the AC adaptor's plug to an electrical outlet.



2 Turn on the network device connected to BR-300AN.

- * Some network devices require additional network settings. In such cases, refer to the manual that came with the network device.
- * When turning on BR-300AN and network devices, be sure to turn on BR-300AN first. Do not press the push switch then.

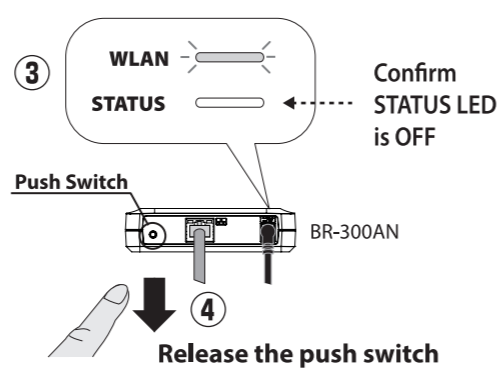
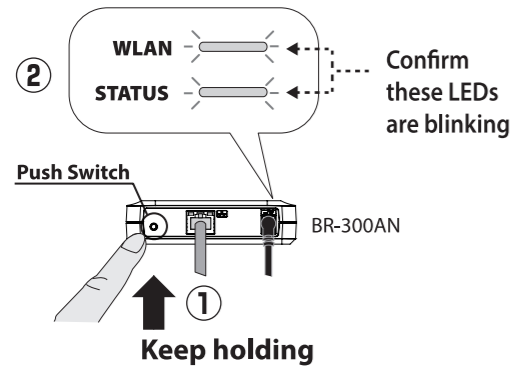
3 Press the WPS button on your wireless router. Confirm that your wireless router is waiting for wireless connection.



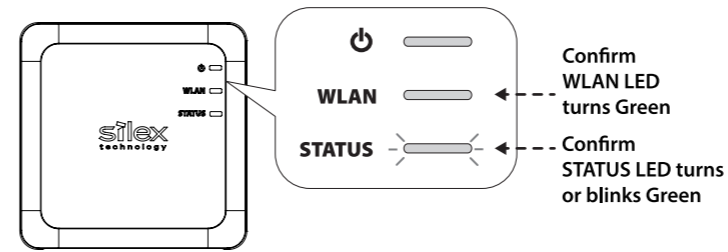
Wireless Router

- The name, position and shape of the WPS button will differ depending on your wireless router. For details, refer to the operation manual that came with your wireless router.
- Please use only one wireless router. If two or more routers are waiting for wireless connections, BR-300AN will not be able to connect properly.

4 Press and hold the push switch at the front of BR-300AN. The WLAN LED and STATUS LED will start to blink Green together. Release the push switch when the STATUS LED turns off while the WLAN LED keeps blinking (it may take 15sec for the STATUS LED to turn off after both LEDs started blinking).



5 BR-300AN will start to communicate with your wireless router. When the wireless configuration is successfully completed, the WLAN LED turns Green and the STATUS LED turns or blinks Green.



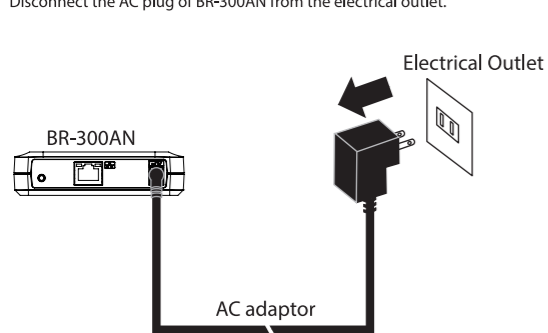
- It may take a while to complete the wireless configuration depending on your environment (up to 2 min).

***When wireless configuration has failed, the WLAN LED will flash rapidly.**
Read the notes above and start from **3** again.

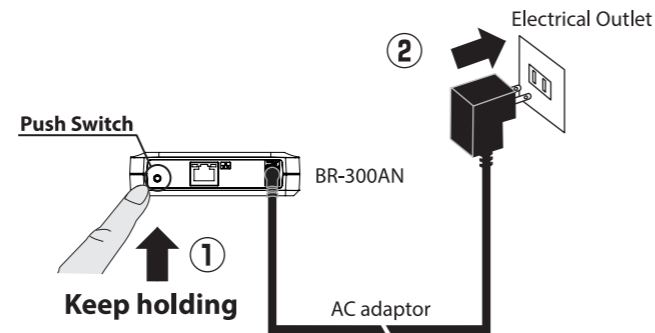
Factory Default Configuration

How to reset BR-300AN to the factory default settings is explained.

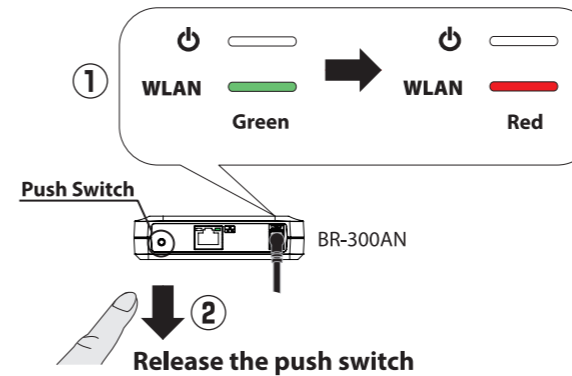
1 Disconnect the AC plug of BR-300AN from the electrical outlet.



2 While reconnecting the AC plug to the outlet, press and hold the push switch at the front of BR-300AN. Keep pressing and the factory default configuration will begin.



3 When the WLAN LED turns from Green to Red, release the switch. The factory default configuration is completed. After the factory default configuration is completed, BR-300AN will restart.



How to Download User's Manual

The User's Manual can be downloaded from our website.

1 Access the website below:

URL: <https://www.silextechnology.com/>

2 Go to the **Support** page and download the User's Manual.

Product Name	BR-300AN
User's Manual	BR-300AN User's Manual

Trademarks

- Wi-Fi Protected Setup is a trademark of Wi-Fi Alliance.
- Other company names and product names contained in this document are trademarks or registered trademarks of their respective companies.

Customer Support Center

Customer support is available for any problems that you may encounter.

Customer Support Center information

	E-mail
USA	support@sillexamerica.com
Europe	support@sillexeurope.com