

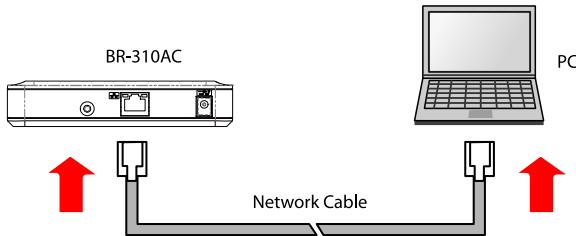
Firmware Update Procedure

This document describes how to upgrade the firmware of BR-310AC.

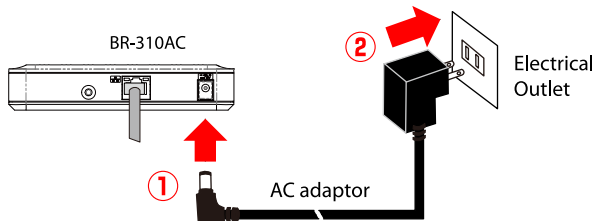
The firmware can be updated using the Web browser interface of BR-310AC.

* In this document, Windows 7 is used as an example. However, the procedure will be the same if you are using an OS other than Windows 7.

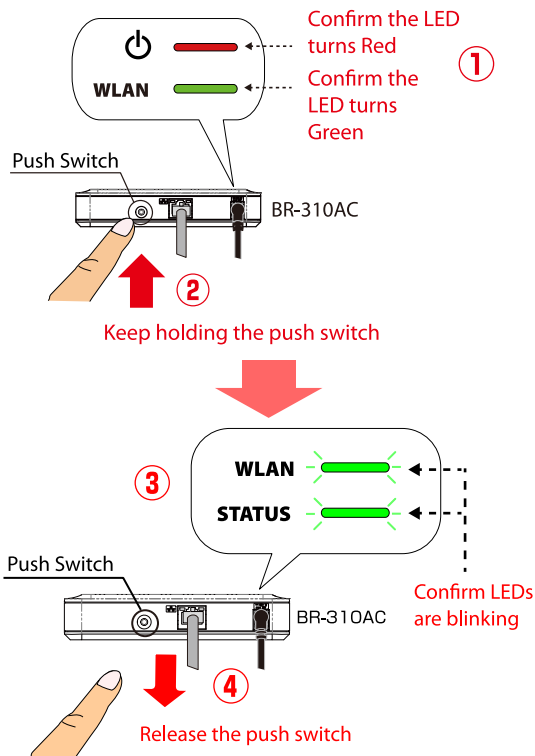
- 1** Connect BR-310AC to the PC using the network cable that came with BR-310AC.



- 2** Connect the AC adaptor to BR-310AC, and the AC adaptor's plug to an electrical outlet.

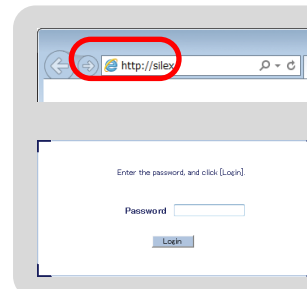
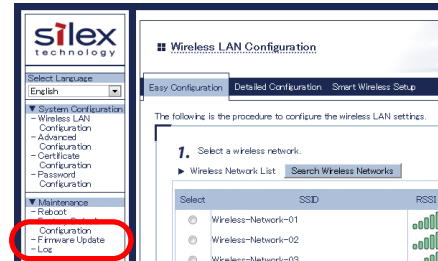


- 3** When the WLAN LED turns Green after the POWER LED turns Red, press and hold the push switch (at the front). Release the push switch when WLAN LED and STATUS LED start to blink together (It may take 20sec until blinking). BR-310AC will start running in the **Configuration Mode** then. Now you can upgrade the firmware of BR-310AC from the PC that has been connected to BR-310AC via a network cable.



* If wireless LAN is enabled on your PC, please disable it.

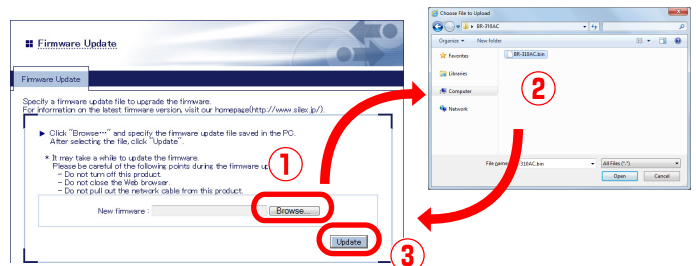
- 4** Start your Web browser (e.g. Internet Explorer, Safari, etc.) from the PC and then the Web interface of BR-310AC will be displayed. Click **Firmware Update**.



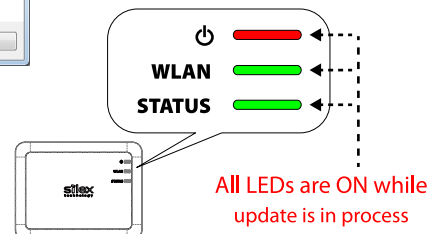
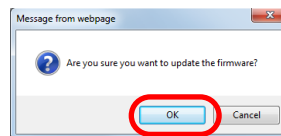
* If the Web interface is not displayed, enter "http://silex" in the address bar of the Web browser and press the Enter key.

* If a password is set to BR-310AC, a password entry screen is displayed. Enter the password and click **Login**.

- 5** Firmware Update page is displayed. Click **Browse** to select the firmware update file (**BR-310AC.bin**). Check that the file name is displayed at **New firmware** field and click **Update**.



- 6** Click **OK** to the confirmation message. The firmware update will begin. All LEDs on top of BR-310AC turn ON while the firmware update is in process.



* Do not turn off BR-310AC or close your Web browser while the firmware update is in process.

- 7** When the LED status changed from above, turn off BR-310AC by unplugging AC adaptor from the electrical outlet. The firmware update has been completed now.