


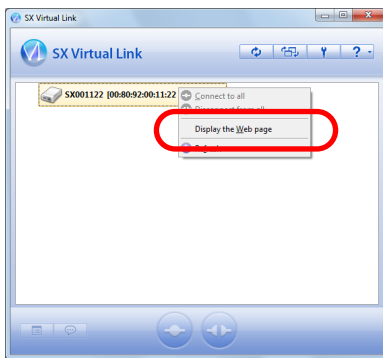
Firmware Update Procedure

This document describes how to update the firmware of SX-3000GB / SX-DS-4000U2 / SX-DS-3000U1 (hereinafter, "the device server").


The firmware can be updated using the Web Browser Interface of the device server. Before you start, please make sure that both your PC and the device server are connected to a wired network.

* This document uses SX-3000GB and Windows 7 as an example. However, the procedure will be the same if you are using SX-DS-4000US / SX-DS-3000U1 or an OS other than Windows 7.

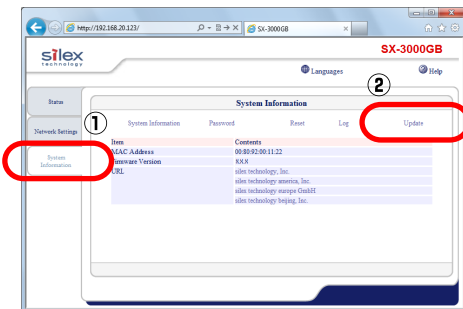
- 1 Click the SX Virtual Link icon () in the task tray. Right-click the device server on SX Virtual Link's main window and select **Display the Web page** from the menu displayed.



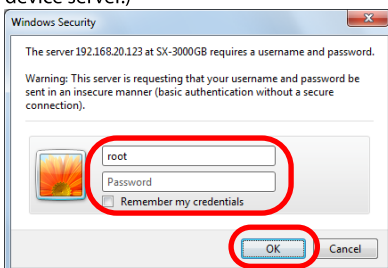
※If SX Virtual Link is not running, click **Start - All Programs - silex Device Server - SX Virtual Link - SX Virtual Link**.

※In Windows 7, click the () button on the notification area (bottom right corner of your desktop) to display the taskbar icons.

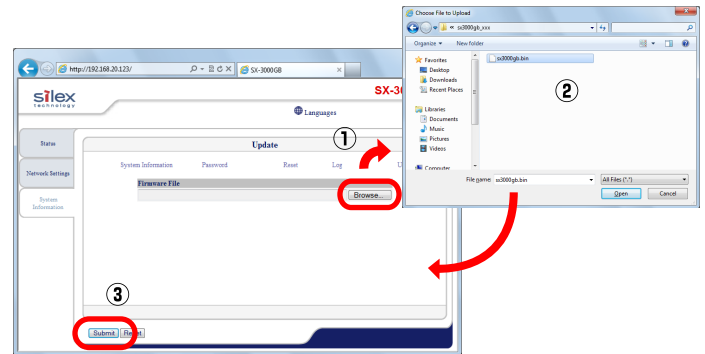
- 2 The Web page of the device server will appear. Click **System Information** tab. In the page displayed, click **Update**.



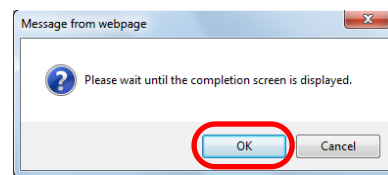
- 3 User authentication screen will be displayed. Enter "root" for User name and password that you have configured for the device server to Password, and click **OK**. (In the factory default setting, no password is set to the device server.)



- 4 When the user authentication is successfully completed, the Update page will be displayed. Click **Browse...** and select the firmware file you wish to load to the device server (sx3000gb.bin / sxd4000u2.bin / sxd3000u1.bin). Check that the file name is displayed in Firmware File field and click **Submit**.



- 5 The update confirmation message as shown below will be displayed. Click **OK** and the firmware update will begin. Please wait until the update is complete. When the update is complete, the 'Accepted' message will be displayed.



Please wait until the completion screen is displayed.

HTTP 1.0/202
Result [Accepted]

* Do not turn off the device server or close your Web browser while the firmware update is in process.

- 6 Firmware update is now complete. Please wait for approximately 20 seconds as the device server is automatically rebooted. Click the **System Information** tab and check that the version information is updated.